

SPECIFICATIONS – MOTOR PUMPS: E500 SERIES

Specialized Pump Capabilities for Specialized Attack Vehicles



The E500 Series Motor Pump is specifically designed for mounting on specialized attack vehicles. The diesel-powered motor pump combines the muscle of Waterous vehicle-mounted pumps with the convenience of its own power source. Available in two models: E501 or E511:

E500 Pump Performance							
E501-C							
	FLOW			PRESSURE			
	GPM	l/min	l/sec	PSI	bar	kPa	MPa
Max Flow	110	420	6.6	100	7	700	.7
Max Pressure	50	200	3.3	400	28	2800	2.8
E511-C							
	FLOW			PRESSURE			
	GPM	l/min	l/sec	PSI	bar	kPa	MPa
Max Flow	275	1100	18	50	3.5	350	.350
Max Pressure	100	400	6.5	190	13	1300	1.3

Pump Specifications:

Intake:

E501-C: 2 inch female NPT

E511-C: 3 inch female NPT (Optional 3 inch Victaulic Adapter)

Discharge:

E501-C: 1-1/2 inch female NPT

E511-C: 2 inch female NPT (Optional 2 inch Victaulic Adapter)

Volute Body and Head:

High-strength aluminum alloy protected by anodizing for corrosion protection.

Impeller:

High-strength, corrosion-resistant bronze, fully enclosed, double-hubbed to balance hydraulic thrust, mechanically balanced to eliminate vibration.

Impeller Shaft:

Integral driven gear and shaft made of hardened steel, nickel-plated for wear and corrosion resistance.

Wear Rings:

Long wearing bronze. Easy to replace when required to restore original pump efficiency.

Drive Shaft and Gear:

High-strength stainless steel shaft and a heat-treated ductile iron gear.

Shaft Seal:

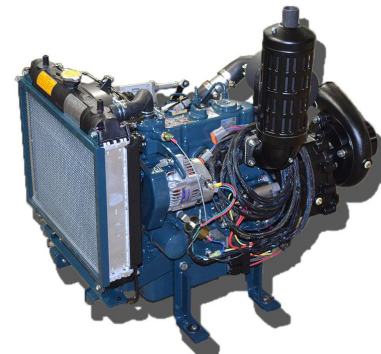
Spring-loaded mechanical type. Wear and heat resistant silicon-carbide.

Gear Case:

Two-gear speed increaser utilizing high-strength aluminum alloy case. Helical cut gears for reduced wear and noise and anti-friction bearings throughout.

Dimensions and Weights:

Model	Length (in/cm)	Width (in/cm)	Height* (in/cm)	Weight (lb/kg)
E501-C	34.39 (87.4)	20.8 (52.8)	25 (63.5)	252 (115)
E511-C	35.28 (89.6)	20.8 (52.8)	25 (63.5)	237 (108)



Engine Specifications:

Engine:

Kubota, Model D902-E3B, Super Mini Series, in-line 3-cylinder, water-cooled, naturally aspirated delivering a maximum output of 24.8 hp (18.5 kw) @ 3600 RPM, 54.8 cu. in. (899 cc) displacement, 4-cycle, diesel fueled.

Lubrication:

Pressure fed with spin on filter.

Starter:

12-14 volt, 1.2 kW

Emission Regulation:

Tier 4

Alternator:

12 VDC, 40 AMP

Options and Accessories:

Priming System:

The priming system consists of either a Waterous' hand or electric primer shipped loose for remote mounting.

Exhaust System:

Spark Arrestor

Control Panel:

- **Single Control Panel**
Standard: Allows operator to change operating parameters electronically with a touch of a button.
- **Dual Control Panel Optional**
- **No Panel Option Deduct**



MOTOR PUMPS: E500 SERIES

Performance Curves:

