



**TECHNICAL BULLETIN
No. 0125**

**NEW PUMP SHIFT FOR
C20/C21 TRANSMISSION**

Waterous announces a new pump shift design for the C20/C21 Transmission.

Beginning on October 2, 2017, all orders received will have the new pump shift design.

The new design incorporates internal changes adding to the efficiency of the shift selection between ROAD and PUMP Mode.

Items that have NOT changed on the New Pump Shift:

- Electrical 2-pin Deutsch connections
- Shaft length and internal thread override cable connection

Changes to the New Pump Shift:

- 90-degree swivel elbow included for 1/4" air tube connections.
- Socket head cap screws used to mount the shift unit to the transmission (hex head screws used on previous version).

Figure A. Old and New Style Shift Unit Shown on C20 Transmission

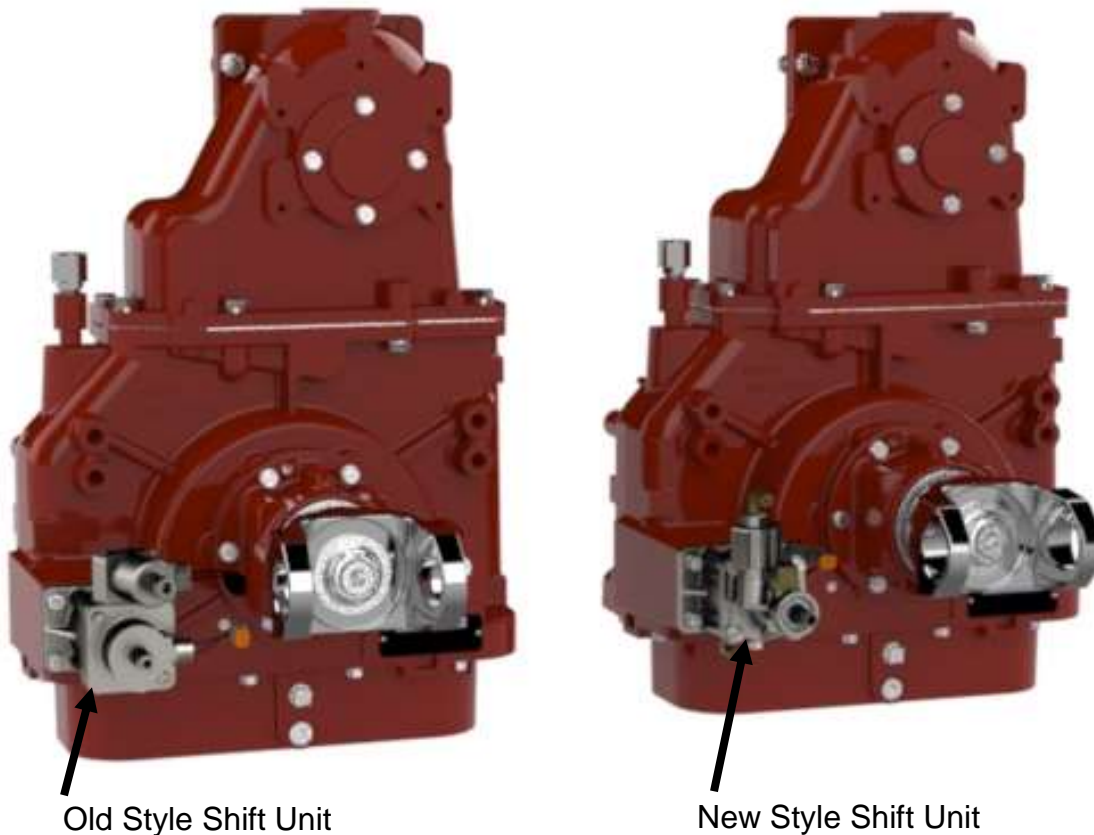
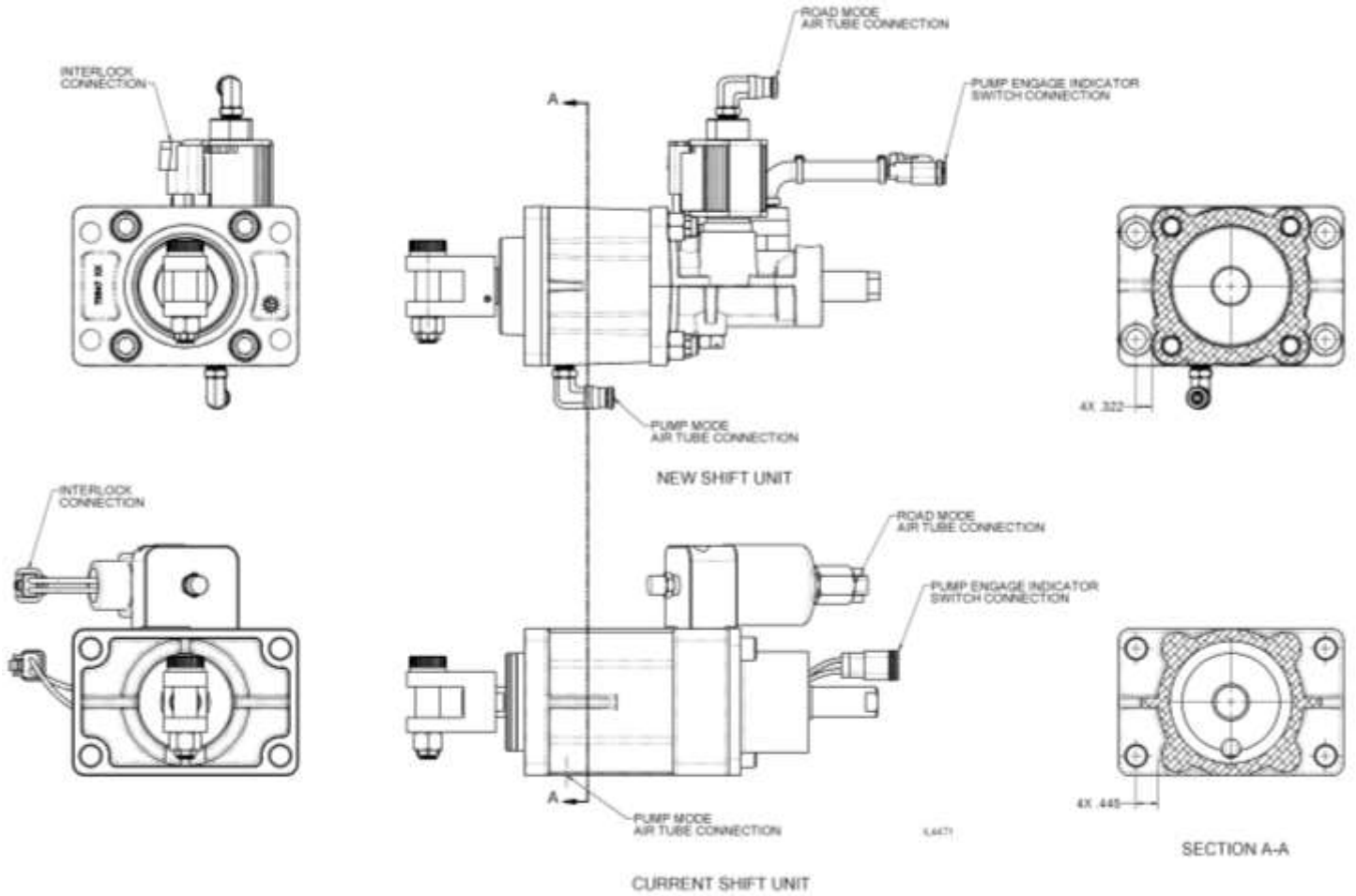


Figure B. Old and New Style Shift Unit



NOTE: The information in this technical bulletin was current at the time of printing. Waterous reserves the right to change this information