



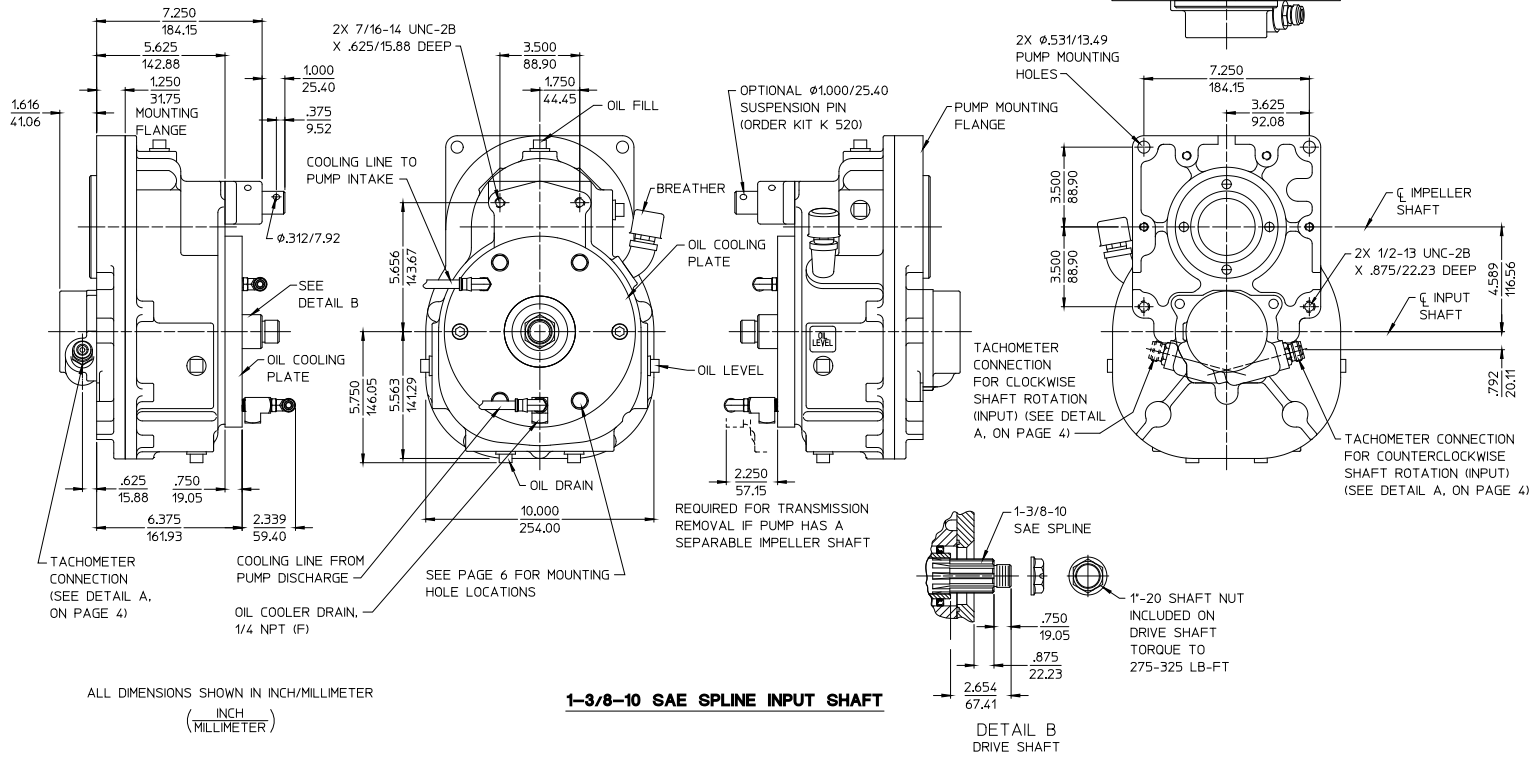
Document Number	Issue Date	Rev. Date
DPL82076-1	01/10/96	9/19/18

Dimensional Drawings Heavy Duty K Transmission

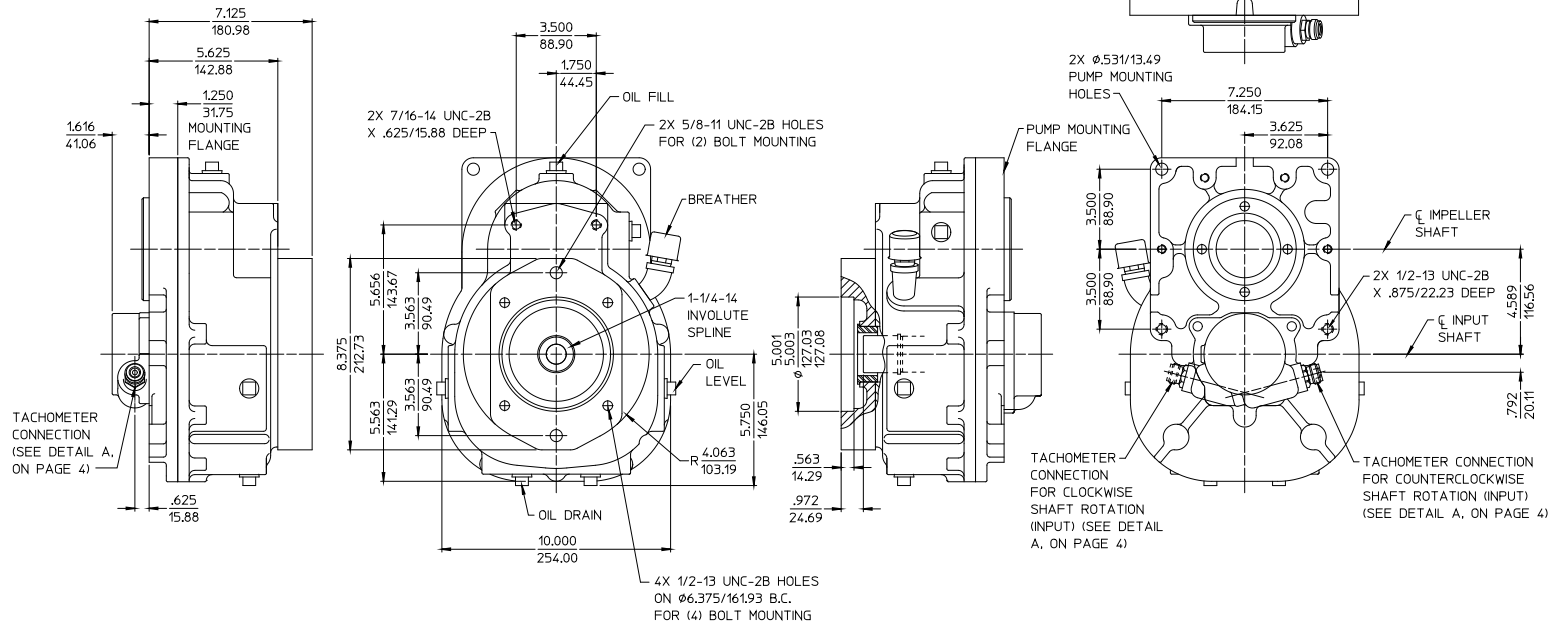
Index:

Pump Model	Impeller Shaft Type	Input		See Page
		Shaft	Rotation	
CM, CS (Rear Drive)	Separable	1-3/8-10 SAE Spline	Clockwise or Counterclockwise	2
CGV, CGVR, CGVG, CXV	One-Piece			
CGV, CGVR, CGVG, CXV	One-Piece	SAE Class C 2 or 4 Bolt Hydraulic Flange	Clockwise or Counterclockwise	3
CM, CS (Front Drive)	One-Piece	1-3/8-10 SAE Spline	Counterclockwise	4
Available Transmission Mounting Positions and Detail A (Tachometer Connection)				5
Available Mounting Hole Locations (Does Not Include SAE Class C 2 or 4 Bolt Hydraulic Flange)				6

AVAILABLE AS FOLLOWS:							
DRIVE	TYPE	MODEL	AVAILABLE RATIOS	INPUT		AVAILABLE FOR PUMP MODELS:	
				ROTATION	SHAFT	PUMP MODEL	IMPELLER SHAFT TYPE
P.T.O.	TWO GEAR WITHOUT HYDRAULIC CLUTCH	HEAVY DUTY K (HDK)	1.16, 1.30, 1.38, 1.56, 1.65, 1.88, 2.14, 2.45, 2.83	CLOCKWISE OR COUNTERCLOCKWISE	1-3/8-10 SAE SPLINE	CM, CS (REAR DRIVE)	SEPARABLE
						CGV, CGVR, CGVG, CXV	ONE-PIECE



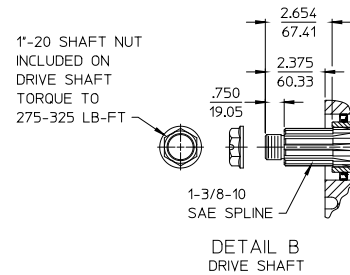
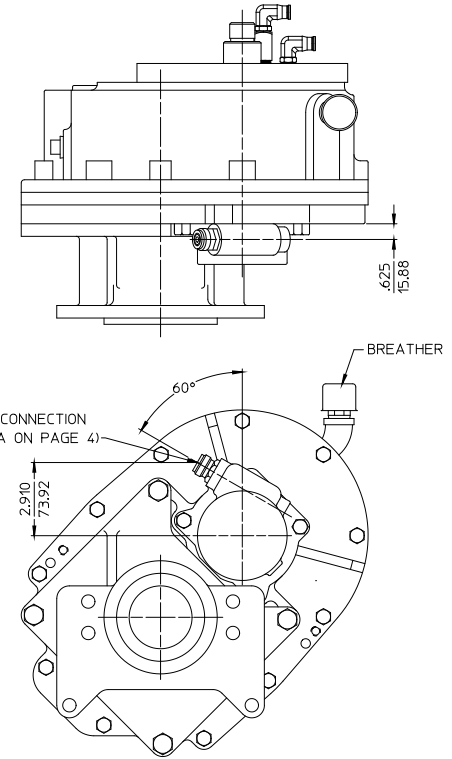
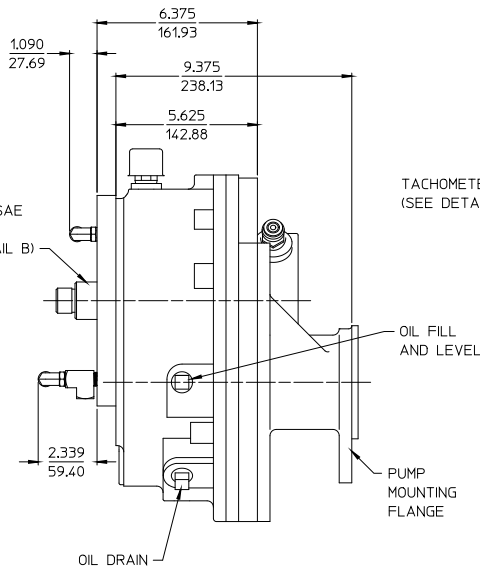
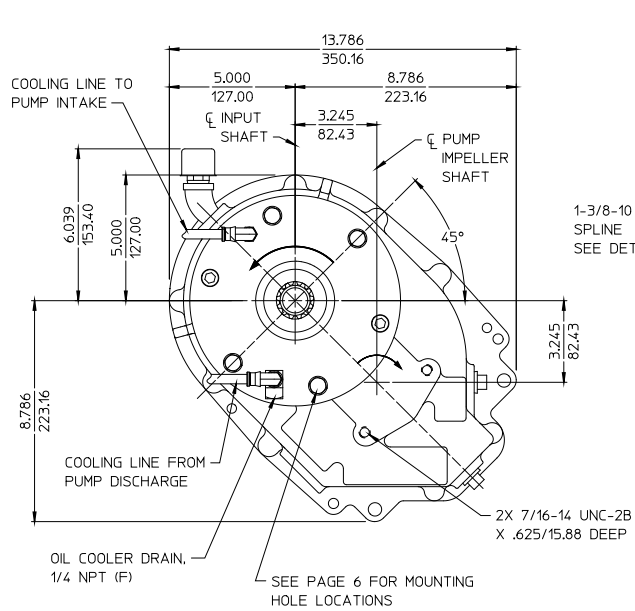
AVAILABLE AS FOLLOWS:							
DRIVE	TYPE	MODEL	AVAILABLE RATIOS	INPUT		AVAILABLE FOR PUMP MODELS:	
				ROTATION	SHAFT	PUMP MODEL	IMPELLER SHAFT TYPE
P.T.O.	TWO GEAR WITHOUT HYDRAULIC CLUTCH	HEAVY DUTY K (HDK)	1.16, 1.30, 1.38, 1.56, 1.65, 1.88, 2.14, 2.45, 2.83	CLOCKWISE OR COUNTERCLOCKWISE	SAE CLASS C 2 OR 4 BOLT HYDRAULIC FLANGE	CGV, CGVR, CGVG, CXV	ONE-PIECE



ALL DIMENSIONS SHOWN IN INCH/MILLIMETER
 (INCH / MILLIMETER)

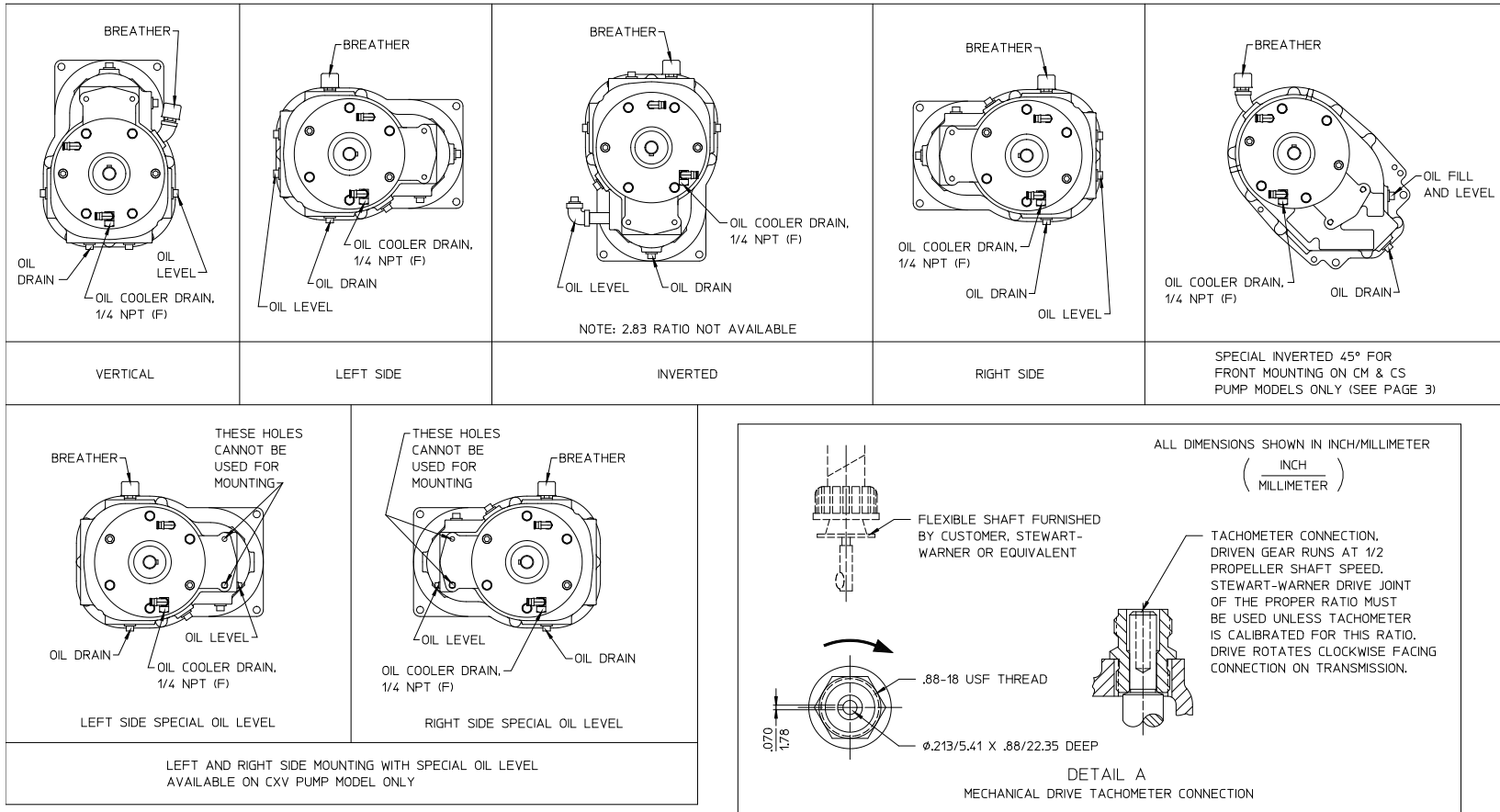
**SAE CLASS C 2 OR 4 BOLT
 HYDRAULIC PUMP INPUT FLANGE**

AVAILABLE AS FOLLOWS:							
DRIVE	TYPE	MODEL	AVAILABLE RATIOS	INPUT		AVAILABLE FOR PUMP MODELS:	
				ROTATION	SHAFT	PUMP MODEL	IMPELLER SHAFT TYPE
P.T.O.	TWO GEAR WITHOUT HYDRAULIC CLUTCH	HEAVY DUTY K (HDK)	1.16, 1.30, 1.38, 1.56, 1.65, 1.88, 2.14, 2.45	COUNTERCLOCKWISE	1-3/8-10 SAE SPLINE	CM, CS (FRONT DRIVE)	ONE-PIECE



ALL DIMENSIONS SHOWN IN INCH/MILLIMETER
(INCH / MILLIMETER)

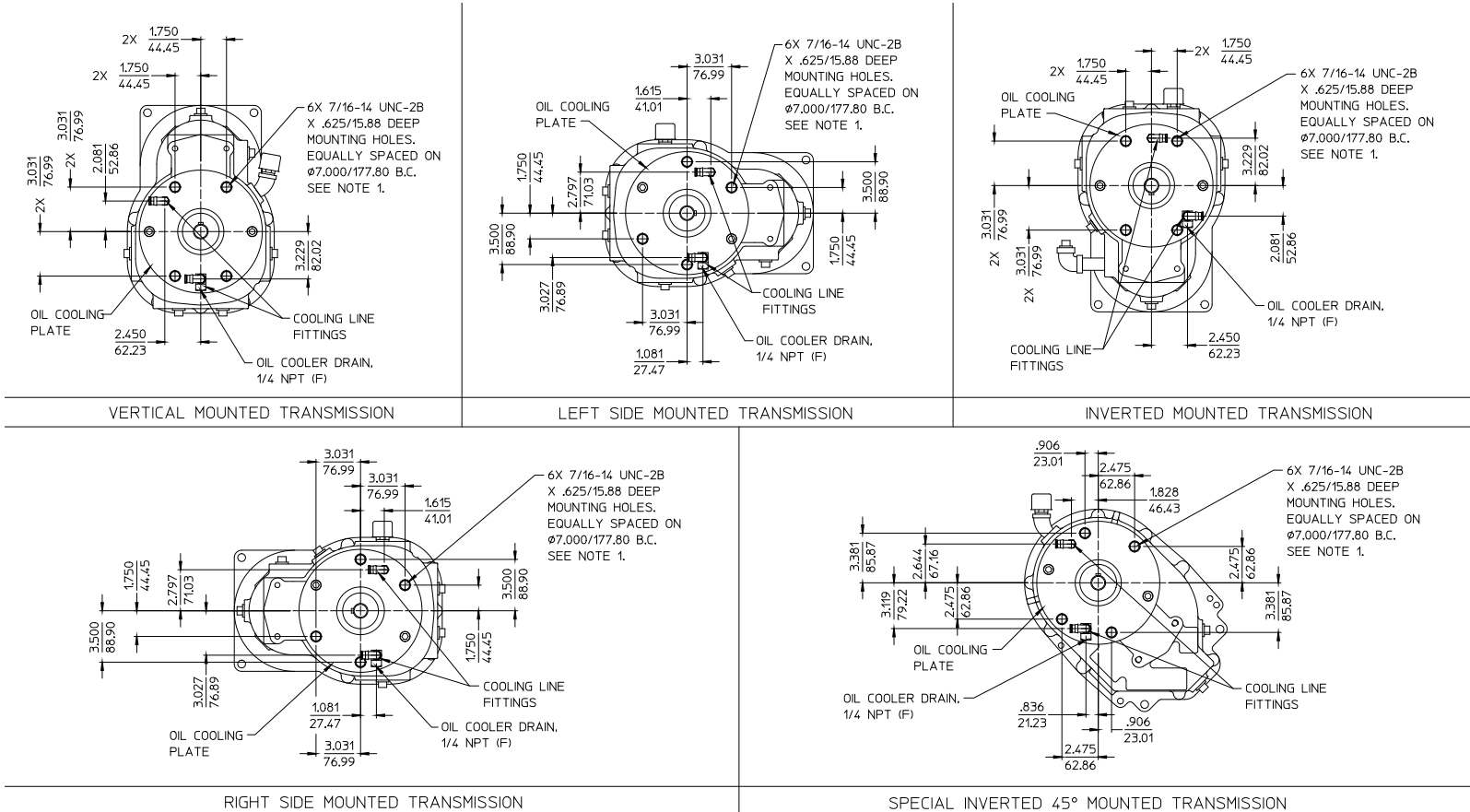
**1-3/8-10 SAE SPLINE INPUT SHAFT
45° INVERTED FRONT MOUNTED**



AVAILABLE TRANSMISSION MOUNTING POSITIONS

(AS VIEWED LOOKING AT TRANSMISSION INPUT SHAFT)

NOTE: ALL TRANSMISSION MOUNTING POSITIONS ARE NOT AVAILABLE ON ALL PUMP MODELS. SEE INDIVIDUAL PUMP DRAWINGS FOR MOUNTING POSITIONS AVAILABLE.



NOTE:
 1. (4) HEX HEAD SCREWS CAN BE REMOVED FOR MOUNTING. DO NOT REMOVE THE (2) SOCKET HEAD SCREWS AS THIS CAN DAMAGE THE SEALS INSIDE TRANSMISSION. ALLOW CLEARANCE FOR COOLING LINES.

AVAILABLE MOUNTING HOLE LOCATIONS
 (AS VIEWED LOOKING AT TRANSMISSION INPUT SHAFT)