



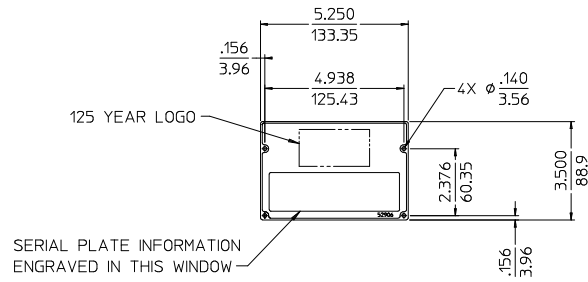
Document Number	Issue Date	Rev. Date
<b>DPL 82231</b>	<b>04/25/96</b>	<b>10/27/15</b>

## Dimensional Drawings for Panel Components

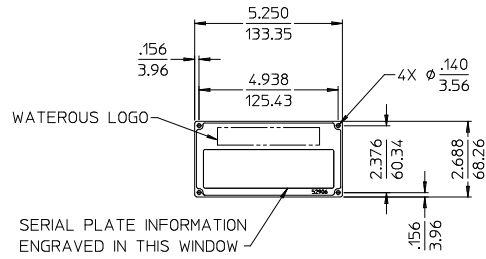
***NOT CURRENT, SEE INDIVIDUAL PRODUCT DIMENSIONAL DRAWINGS***

Panel Component			See Page
Serial Plate (Part No. 52906)			2
Transfer Valve Actuator	CM	Manual	2
		Electric	2
		Electric Override	3
	CP-3	3	
OPM (Overheat Protection Manager)			3
Priming System	VAP Priming Valve Panel		3
Valves	Manual Rotary Actuator	Discharge Valves	4
		Butterfly Valves	
	Electric Rotary Actuator	Discharge Valves	4
		Butterfly Valves	
		Tank to Pump Valves	
	Push-Pull Discharge Valves		4
Pressure Control	Pilot Valves	Discharge Relief Valves	5
		Intake Relief Valves	5
	Intake Relief Valve Warning		6
Drain Valve	Panel Mounted		6
	Cable Operated		6

Panel Component			See Page
Shift	Throttle Ready Panel		6
	In-cab Panel	Pneumatic Shift	7
		Electric Shift (Pumps)	7
		Manual Shift	8
		Electric Shift (PTO's)	8
		Hydraulic Shift	9
Electronic Tachometer Cable (Optional)			9
Auto Tank Fill	Electric Valve Panel		10
	Selector Switch Panel		10
	Tank Level Monitor Panel		10
Advantus™ Foam System	OIT Control Panel		11
	Instruction Plate		11
	Advantus 3 Rating (Optional)		11
	Advantus 6 Rating (Optional)		11
	System Schematic Plate (Optional)		12
FoamPro® Foam System	Instruction Plate		12
	Digital Display Control Module		12
Eclipse™ CAFS	Electric Auto-Sync Panel		13
	Oil Temperature Gauge		13
	Warning Plate		13
	Hose Specification Plate		13

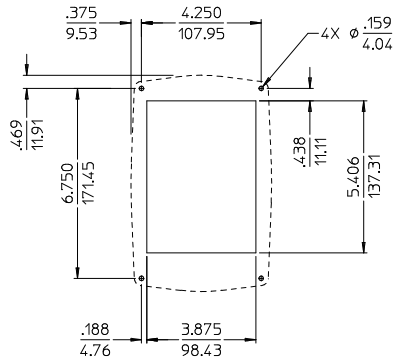


USED ONLY IN 2011



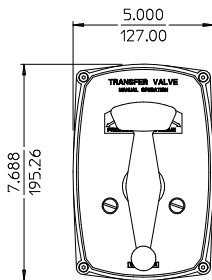
NOTE:  
PANEL PLATE MOUNTING HARDWARE  
NOT SUPPLIED BY WATEROUS CO.

**SERIAL PLATE**

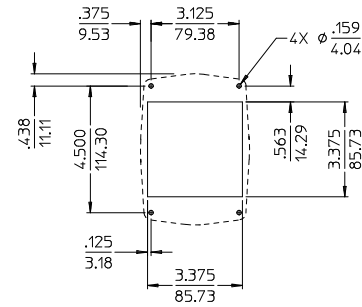


PANEL HOLE LAYOUT

**CM MANUAL**

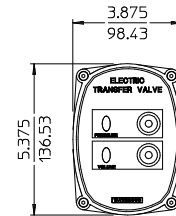


NOTE:  
PANEL PLATE MOUNTING HARDWARE SUPPLIED  
BY WATEROUS CO.



PANEL HOLE LAYOUT

**CM ELECTRIC**



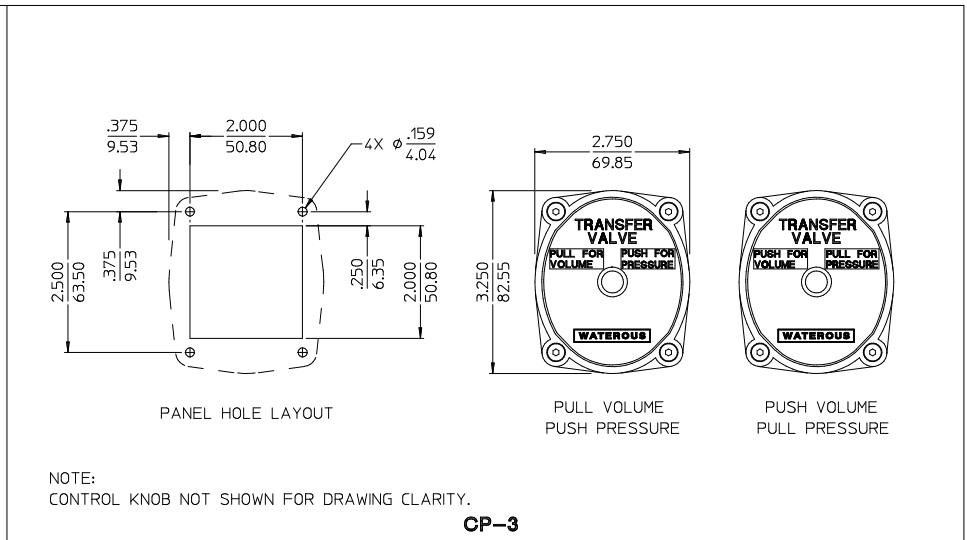
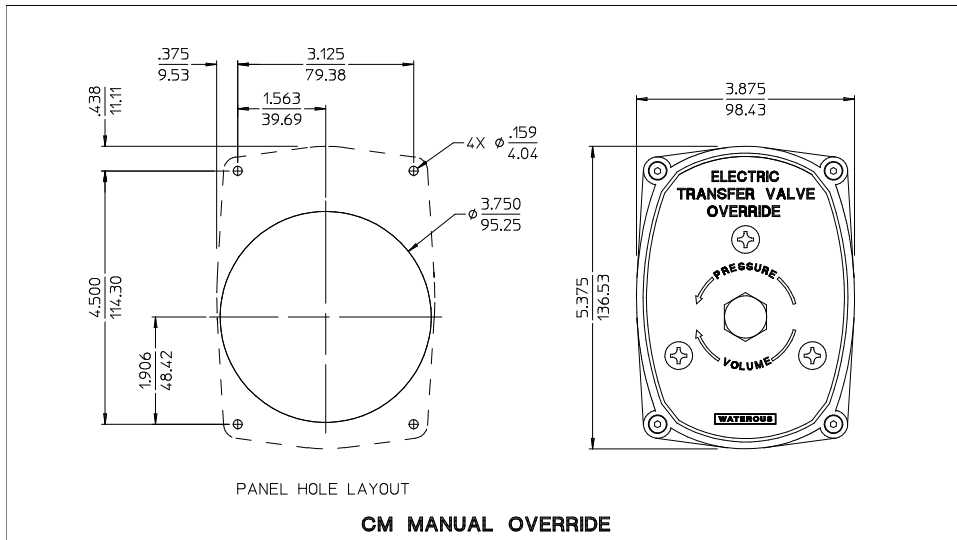
NOTE:  
PANEL PLATE MOUNTING HARDWARE SUPPLIED  
BY WATEROUS CO.

**TRANSFER VALVE ACTUATOR**

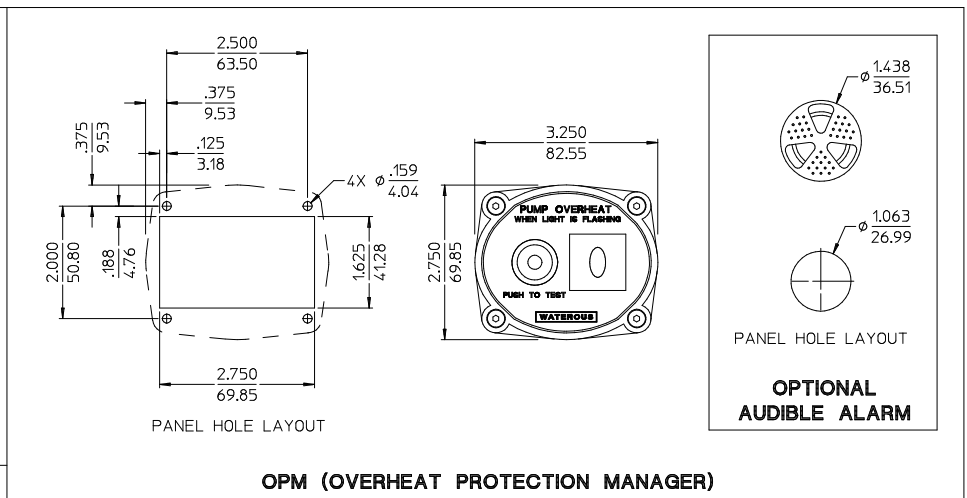
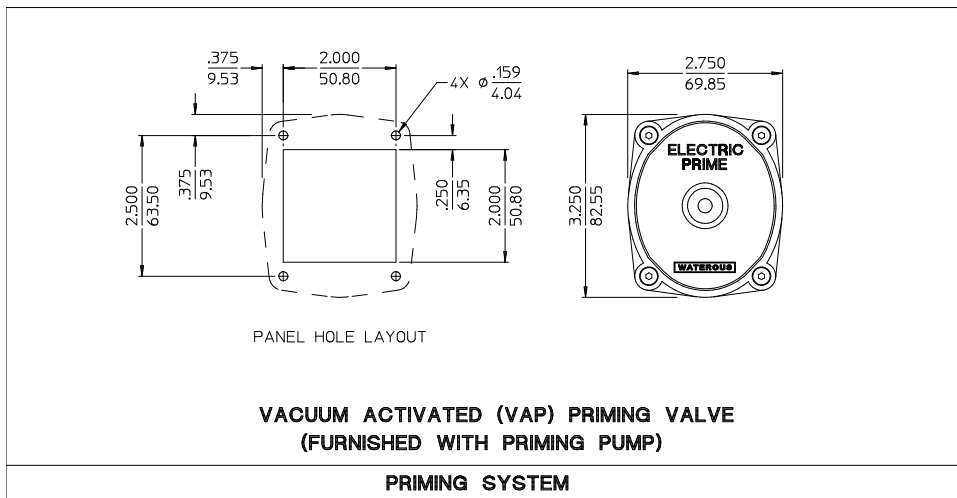
ALL DIMENSIONS SHOWN AS INCH/MILLIMETER

( INCH  
MILLIMETER )

PANEL PLATE DIMENSIONS  
DPL82231  
WATEROUS COMPANY  
SOUTH ST. PAUL, MN 55075  
PAGE 2 OF 13



**TRANSFER VALVE**

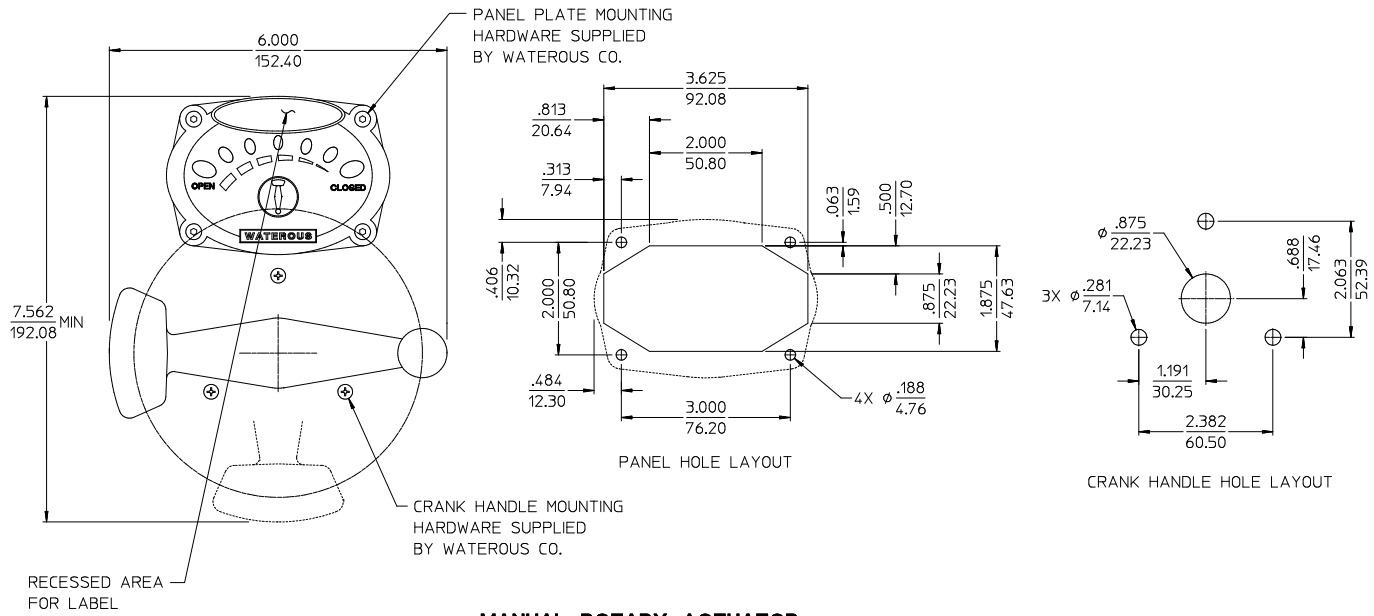


ALL DIMENSIONS SHOWN AS INCH/MILLIMETER

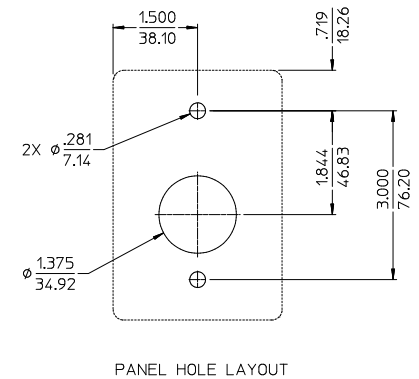
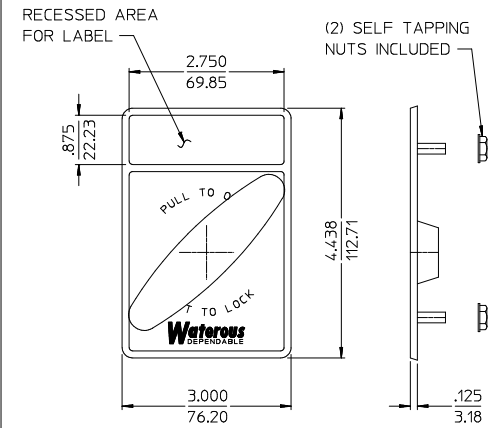
(  $\frac{\text{INCH}}{\text{MILLIMETER}}$  )

NOTE:  
PANEL PLATE MOUNTING HARDWARE SUPPLIED  
BY WATEROUS CO.

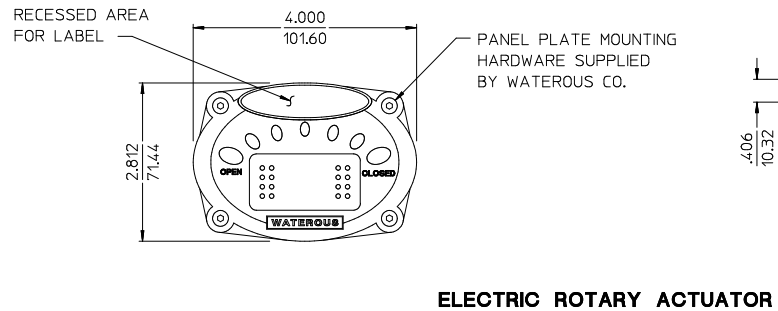
PANEL PLATE DIMENSIONS  
DPL82231  
WATEROUS COMPANY  
SOUTH ST. PAUL, MN 55075  
PAGE 3 OF 13



**MANUAL ROTARY ACTUATOR**

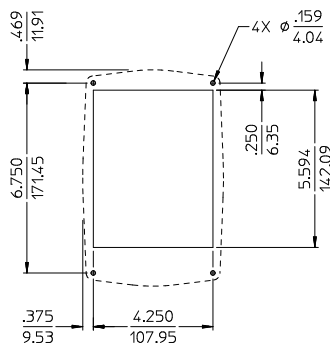


**PUSH/PULL DISCHARGE  
VALVES**



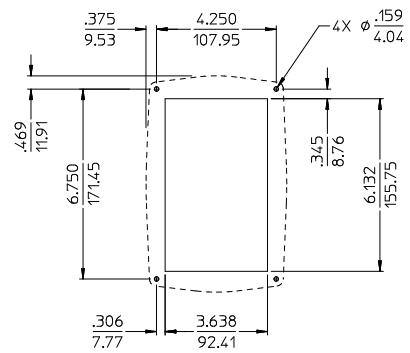
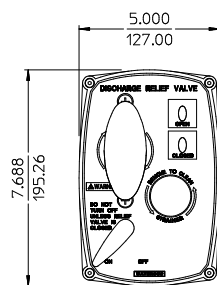
**ELECTRIC ROTARY ACTUATOR**

**VALVES**



PANEL HOLE LAYOUT

**DISCHARGE RELIEF VALVE PILOT VALVE**



PANEL HOLE LAYOUT

**INTAKE RELIEF VALVE PILOT VALVE**

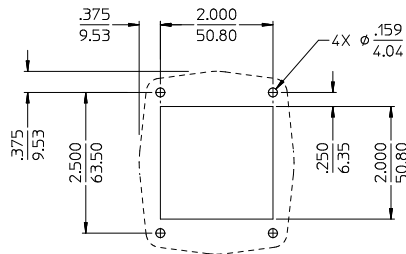
**PRESSURE CONTROL**

ALL DIMENSIONS SHOWN AS INCH/MILLIMETER

(  $\frac{\text{INCH}}{\text{MILLIMETER}}$  )

NOTE:  
 PANEL PLATE MOUNTING HARDWARE SUPPLIED  
 BY WATEROUS CO.

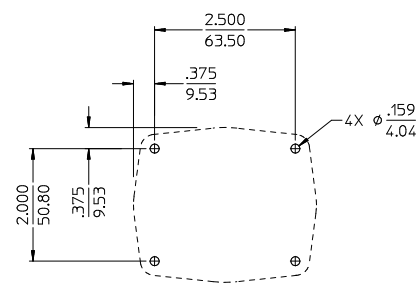
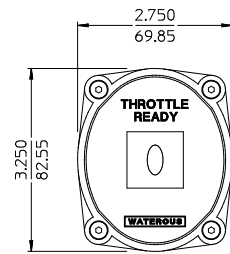
PANEL PLATE DIMENSIONS  
 DPL82231  
 WATEROUS COMPANY  
 SOUTH ST. PAUL, MN 55075  
 PAGE 5 OF 13



OPERATORS  
PANEL HOLE LAYOUT

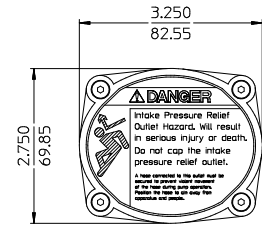
**THROTTLE READY PANEL**

**PUMP SHIFT**

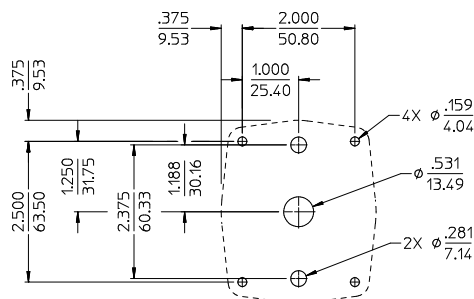


PANEL HOLE LAYOUT

**INTAKE RELIEF VALVE WARNING**



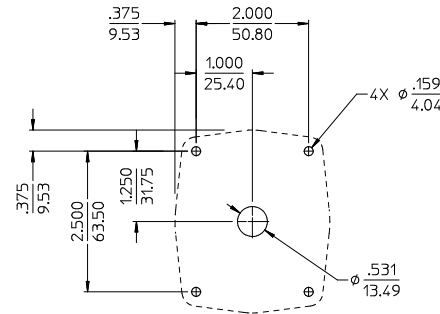
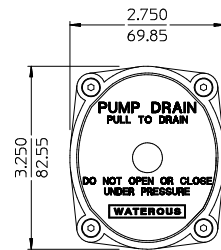
**PRESSURE CONTROL**



PANEL HOLE LAYOUT

**PANEL MOUNTED**

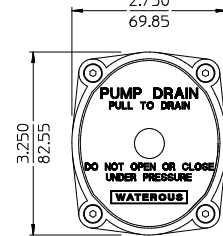
NOTE:  
HANDLE NOT SHOWN FOR DRAWING CLARITY.



PANEL HOLE LAYOUT

**CABLE OPERATED**

NOTE:  
HANDLE NOT SHOWN FOR DRAWING CLARITY.



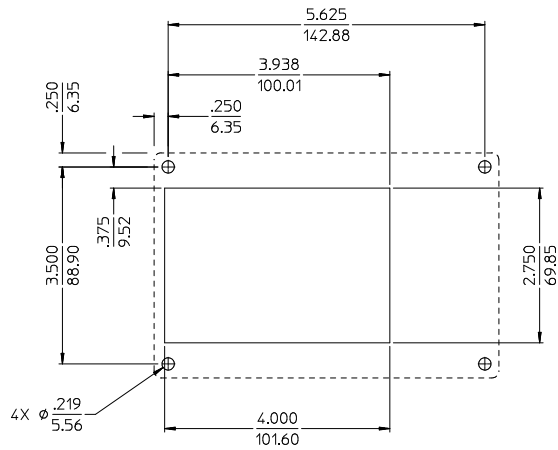
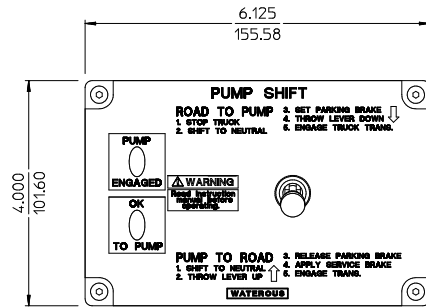
**DRAIN VALVES**

ALL DIMENSIONS SHOWN AS INCH/MILLIMETER

( INCH / MILLIMETER )

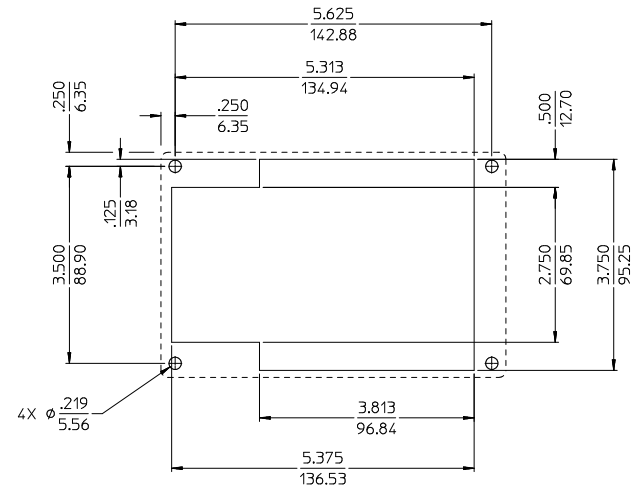
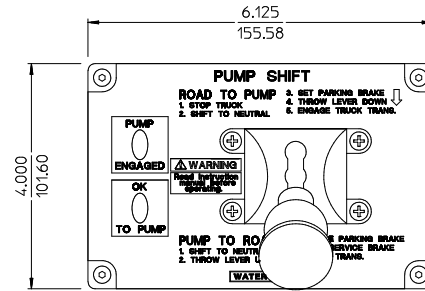
NOTE:  
PANEL PLATE MOUNTING HARDWARE SUPPLIED  
BY WATEROUS CO.

PANEL PLATE DIMENSIONS  
DPL82231  
WATEROUS COMPANY  
SOUTH ST. PAUL, MN 55075  
PAGE 6 OF 13



IN-CAB PANEL HOLE LAYOUT

**ELECTRIC SHIFT**



IN-CAB PANEL HOLE LAYOUT

**PNEUMATIC SHIFT**

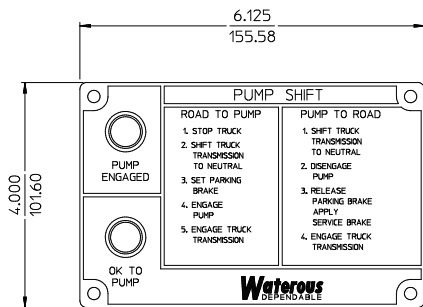
**SHIFT IN-CAB PANEL**

ALL DIMENSIONS SHOWN AS INCH/MILLIMETER

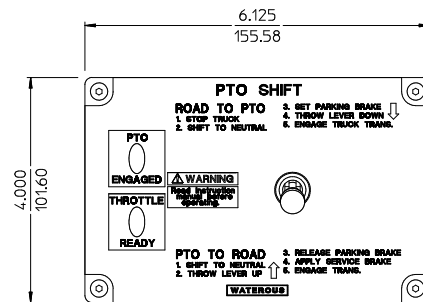
(  $\frac{\text{INCH}}{\text{MILLIMETER}}$  )

NOTE:  
PANEL PLATE MOUNTING HARDWARE SUPPLIED  
BY WATEROUS CO.

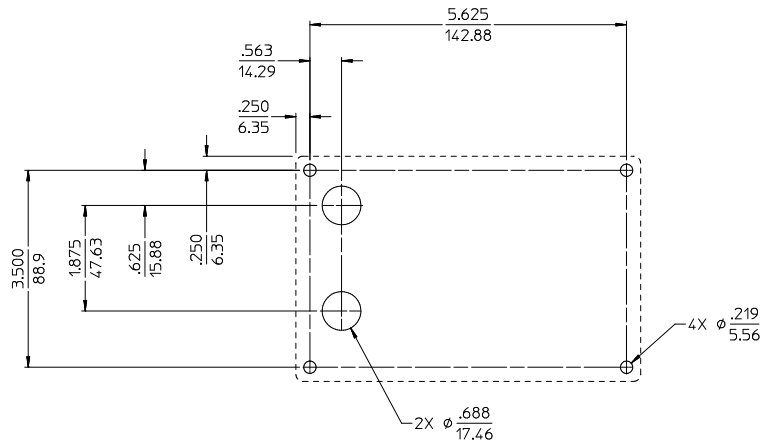
PANEL PLATE DIMENSIONS  
DPL82231  
WATEROUS COMPANY  
SOUTH ST. PAUL, MN 55075  
PAGE 7 OF 13



NOTE:  
PANEL PLATE  
MOUNTING HARDWARE  
NOT SUPPLIED BY  
WATEROUS CO.

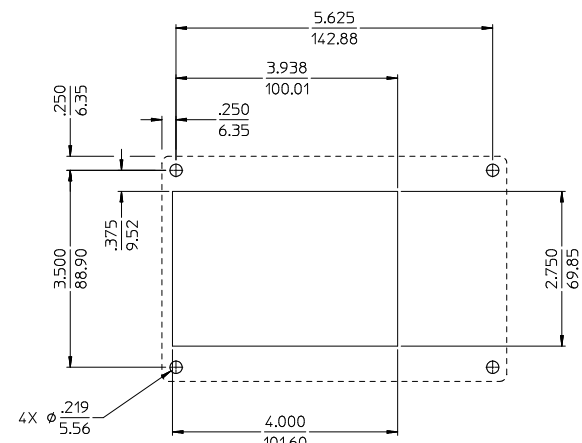


NOTE:  
PANEL PLATE  
MOUNTING HARDWARE  
SUPPLIED BY  
WATEROUS CO.



IN-CAB PANEL HOLE LAYOUT

**MANUAL SHIFT**



IN-CAB PANEL HOLE LAYOUT

**ELECTRIC SHIFT, PTO'S**

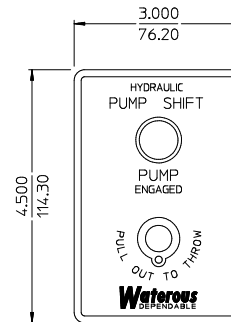
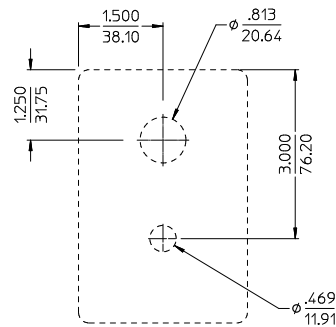
**SHIFT IN-CAB PANEL**

ALL DIMENSIONS SHOWN AS INCH/MILLIMETER

(  $\frac{\text{INCH}}{\text{MILLIMETER}}$  )

PANEL PLATE DIMENSIONS  
DPL82231  
WATEROUS COMPANY  
SOUTH ST. PAUL, MN 55075  
PAGE 8 OF 13

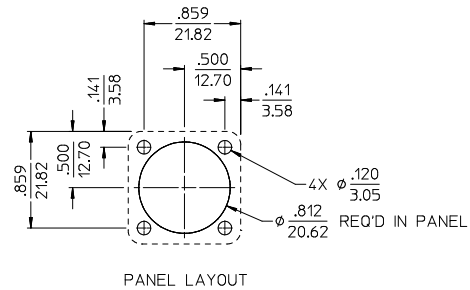




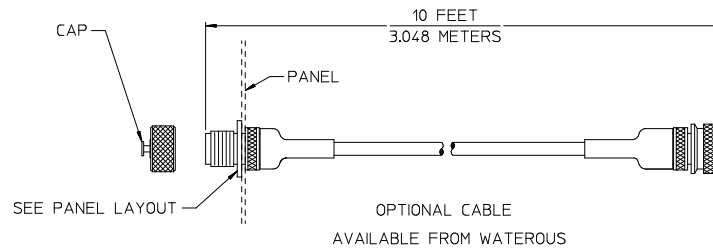
NOTE:  
 SWITCH NOT SHOWN  
 FOR DRAWING CLARITY.  
 PLATE IS SECURED WITH  
 SWITCH & LIGHT NUTS  
 SUPPLIED BY WATEROUS CO.

**HYDRAULIC SHIFT**  
 (USED WITH KC & TC TRANSMISSION)

**PUMP SHIFT IN-CAB PANEL**



NOTE:  
 PANEL MOUNTING HARDWARE  
 NOT SUPPLIED BY WATEROUS CO.

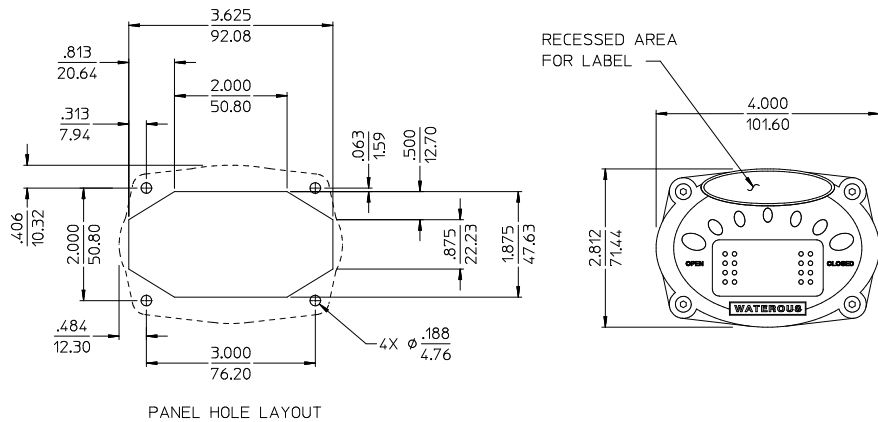


**ELECTRONIC TACHOMETER CABLE (OPTIONAL)**

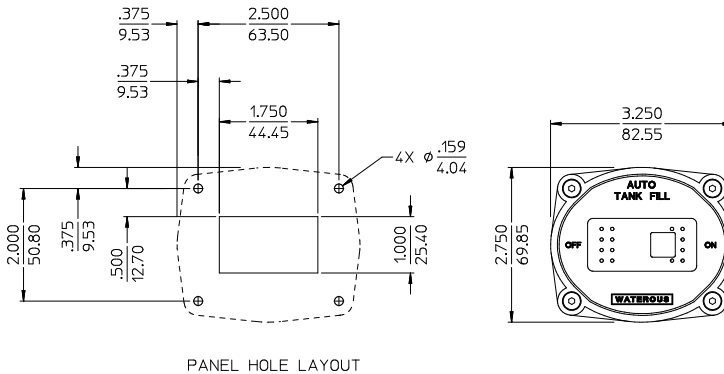
ALL DIMENSIONS SHOWN AS INCH/MILLIMETER

(  $\frac{\text{INCH}}{\text{MILLIMETER}}$  )

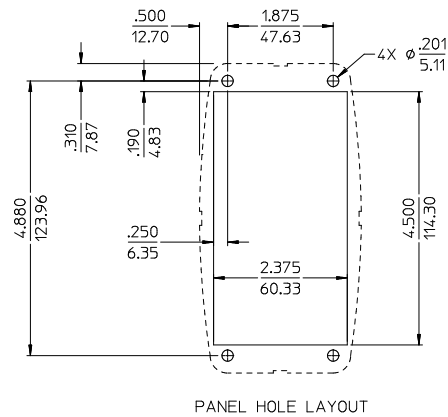
PANEL PLATE DIMENSIONS  
 DPL82231  
 WATEROUS COMPANY  
 SOUTH ST. PAUL, MN 55075  
 PAGE 9 OF 13



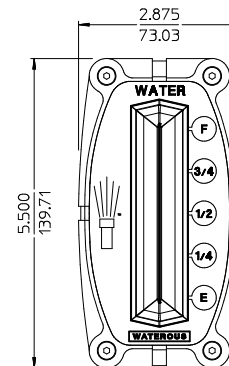
**ELECTRIC VALVE POSITION CONTROL PANEL**



**SELECTOR SWITCH PANEL**



**AUTO TANK FILL TANK LEVEL MONITOR PANEL**



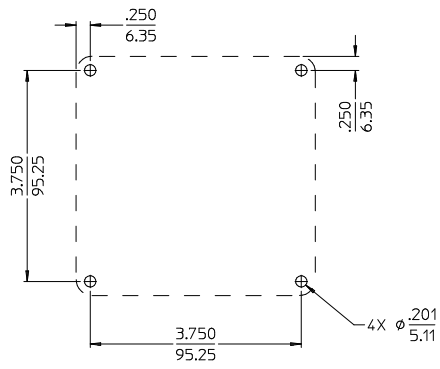
**AUTO TANK FILL**

ALL DIMENSIONS SHOWN AS INCH/MILLIMETER

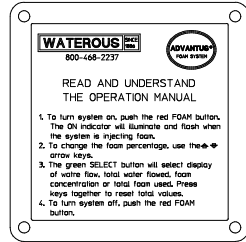
(  $\frac{\text{INCH}}{\text{MILLIMETER}}$  )

NOTE:  
PANEL PLATE MOUNTING HARDWARE SUPPLIED  
BY WATEROUS CO.

PANEL PLATE DIMENSIONS  
DPL82231  
WATEROUS COMPANY  
SOUTH ST. PAUL, MN 55075  
PAGE 10 OF 13

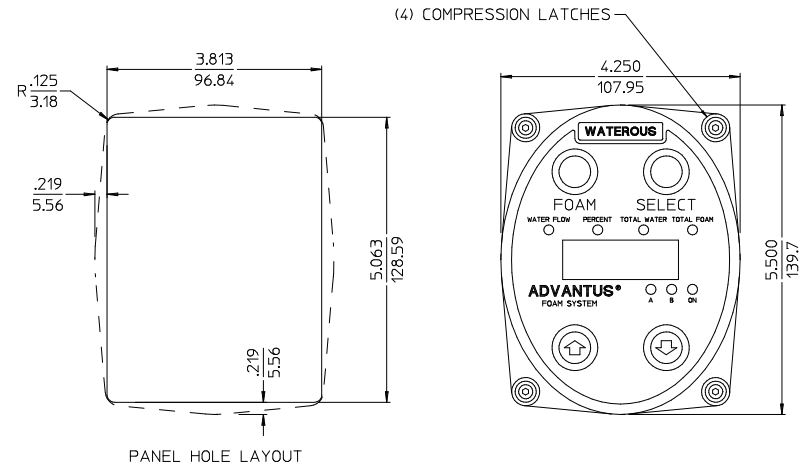


PANEL HOLE LAYOUT



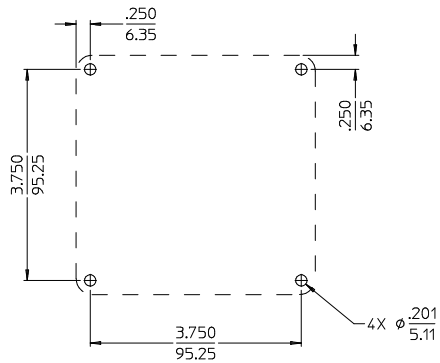
NOTE:  
WATEROUS CO. DOES NOT SUPPLY MOUNTING  
HARDWARE. #10 PAN HEAD SCREWS AND  
NUTS ARE RECOMMENDED FOR MOUNTING.

INSTRUCTION PLATE



PANEL HOLE LAYOUT

OIT CONTROL PANEL

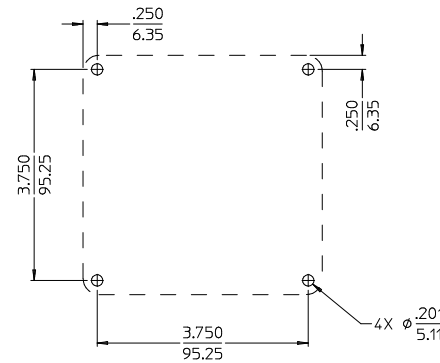


PANEL HOLE LAYOUT

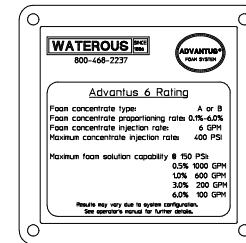


NOTE:  
WATEROUS CO. DOES NOT SUPPLY MOUNTING  
HARDWARE. #10 PAN HEAD SCREWS AND  
NUTS ARE RECOMMENDED FOR MOUNTING.

ADVANTUS 3 RATING PLATE (OPTIONAL)



PANEL HOLE LAYOUT



NOTE:  
WATEROUS CO. DOES NOT SUPPLY MOUNTING  
HARDWARE. #10 PAN HEAD SCREWS AND  
NUTS ARE RECOMMENDED FOR MOUNTING.

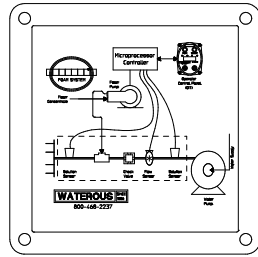
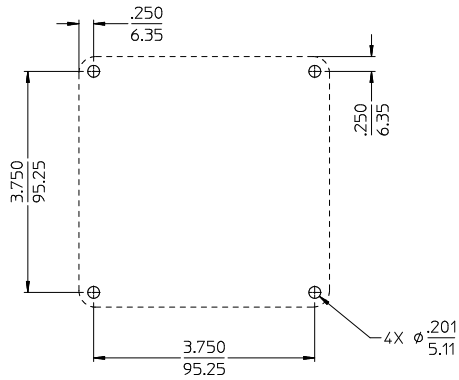
ADVANTUS 6 RATING PLATE (OPTIONAL)

ADVANTUS™ FOAM SYSTEM

ALL DIMENSIONS SHOWN AS INCH/MILLIMETER

( INCH / MILLIMETER )

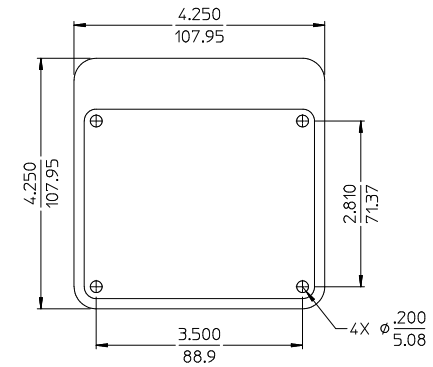
PANEL PLATE DIMENSIONS  
DPL82231  
WATEROUS COMPANY  
SOUTH ST. PAUL, MN 55075  
PAGE 11 OF 13



NOTE:  
WATEROUS CO. DOES NOT SUPPLY MOUNTING  
HARDWARE. #10 PAN HEAD SCREWS AND  
NUTS ARE RECOMMENDED FOR MOUNTING.

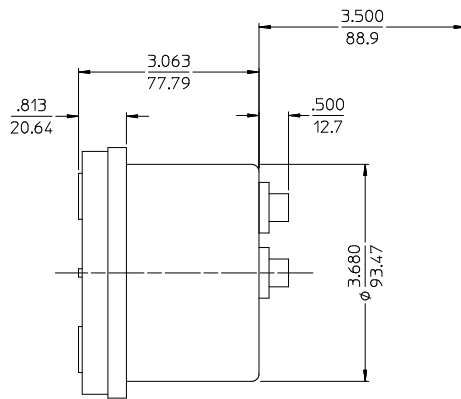
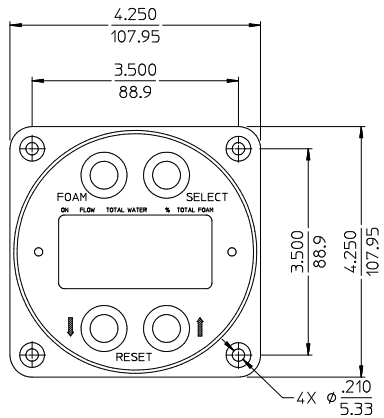
PANEL HOLE LAYOUT  
**SYSTEM SCHEMATIC PLATE (OPTIONAL)**

**ADVANTUS™ FOAM SYSTEMS**

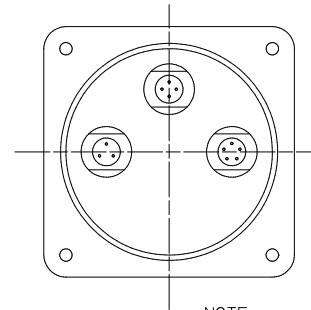


NOTE:  
PANEL PLATE MOUNTING HARDWARE  
NOT SUPPLIED BY WATEROUS CO.

**INSTRUCTION PLATE**



MIN CLEARANCE FOR  
CABLE CONNECTIONS



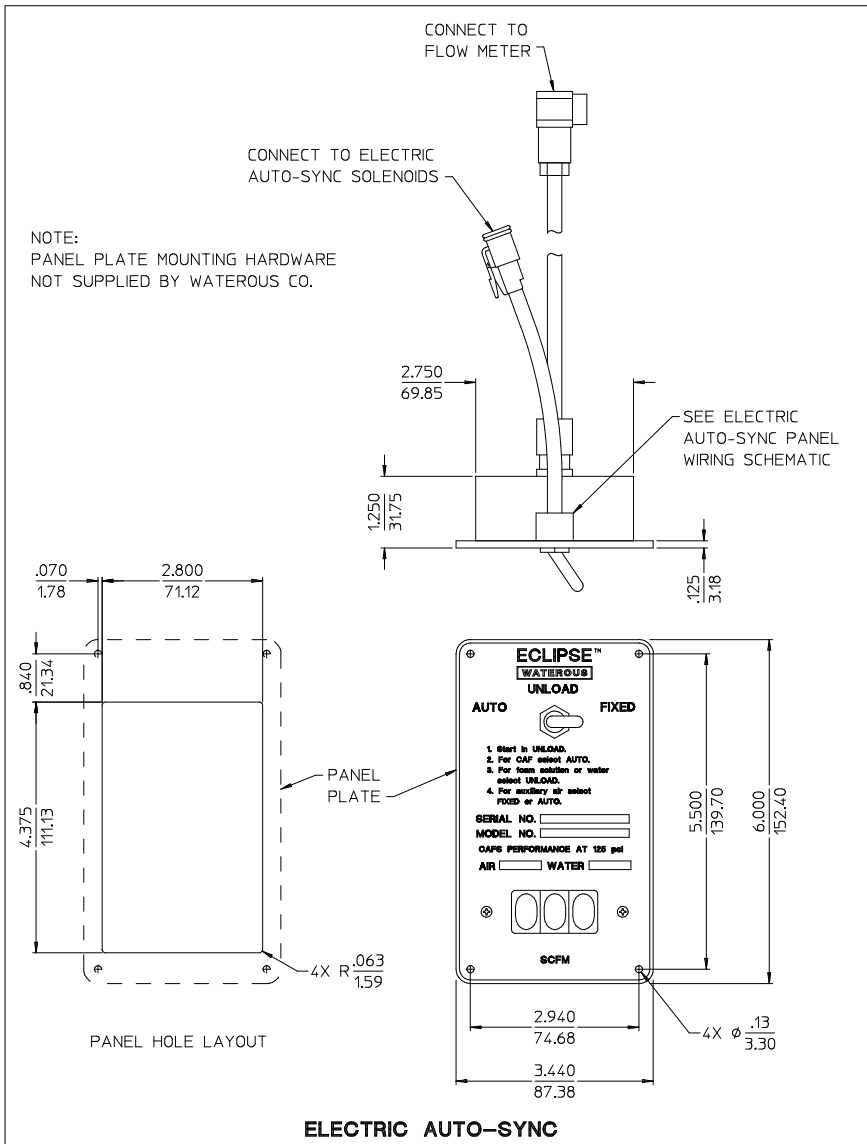
NOTE:  
MOUNTING HARDWARE NOT  
FURNISHED BY WATEROUS

**DIGITAL DISPLAY CONTROL MODULE**

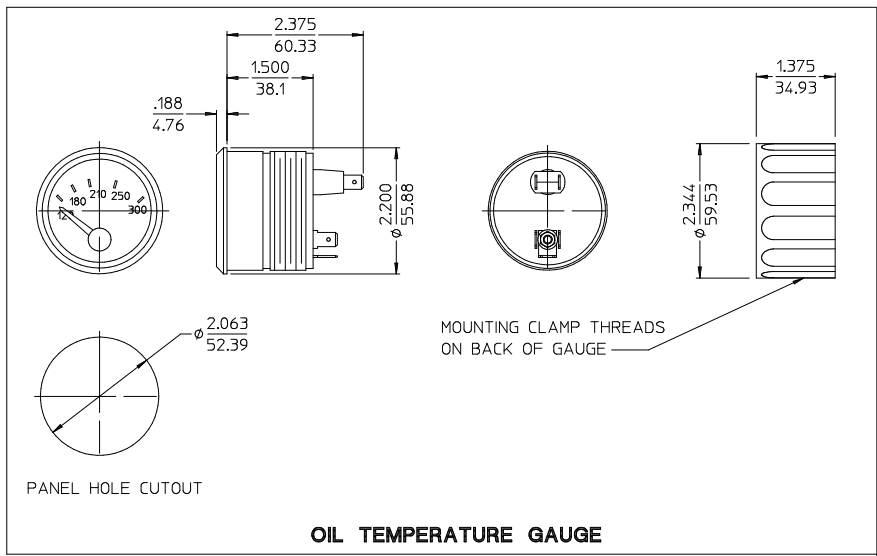
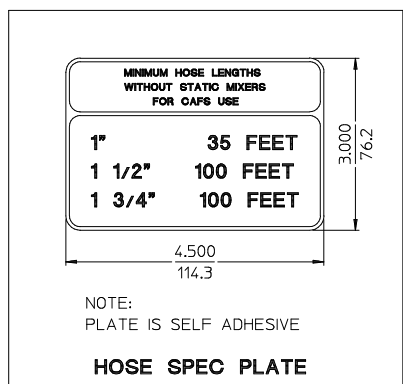
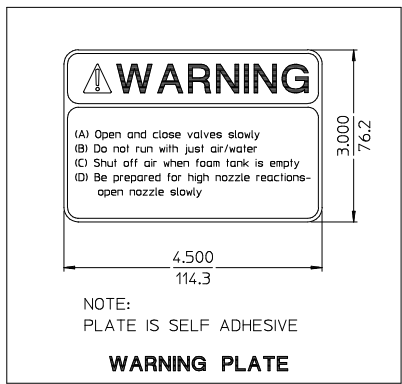
**FOAMPRO® FOAM SYSTEMS**

ALL DIMENSIONS SHOWN  
AS INCH/MILLIMETER  
( $\frac{\text{INCH}}{\text{MILLIMETER}}$ )

PANEL PLATE DIMENSIONS  
DPL82231  
WATEROUS COMPANY  
SOUTH ST. PAUL, MN 55075  
PAGE 12 OF 13



**ELECTRIC AUTO-SYNC**



ALL DIMENSIONS SHOWN  
AS INCH/MILLIMETER  
( INCH / MILLIMETER )

**ECLIPSE™ CAFS**