



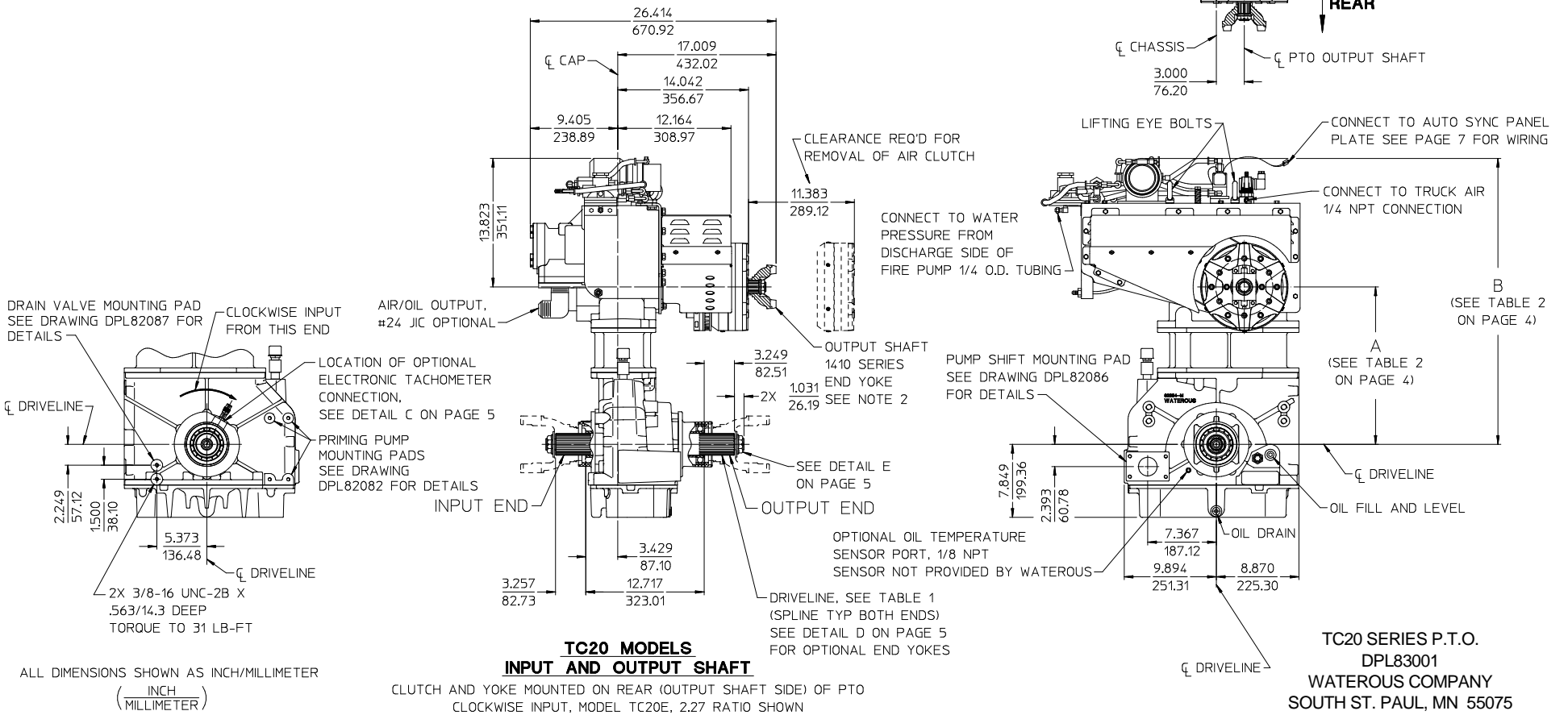
Document Number	Issue Date	Rev. Date
DPL83001	07/21/09	10/27/15

TC20 Series P.T.O. with Eclipse ES™ CAFS Dimensional Drawings

Item	See Page	
	Input and Out-put Shaft	Input Shaft Only
TC20 Models	2	3
Ratio and Drop Dimensions	4	4
Optional End Yokes and Companion Flanges	5	5
Electronic Tachometer Connection		
Mounting Bracket Attachment Locations	6	6
Compressor	Electrical and Plumbing Schematics	7
	Components Shipped Loose	8, 9

TABLE 1 - AVAILABLE DRIVELINES / MODELS								
DRIVELINE			OPTIONAL END YOKES AND COMPANION FLANGES AVAILABLE FROM WATEROUS, SEE DETAIL D ON PAGE 5				PTO MODELS	
TYPE	SIZE	SPLINE	YOKE		COMPANION FLANGE			
			SPICER SERIES	PART NUMBER	CROSS AND BEARING KIT	SPICER SERIES		PART NUMBER
EXTRA HEAVY DUTY	2.35 INCH	2.35-46T INVOLUTE	1710	V 2837	V 2839	1480/1610	V 3719	TC20B, TC20C, TC20D, TC20E, TC20F
			1810	V 2838	V 2840			
			SPL140	V 3388	V 3389	1710/1810	V 3619	

NOTES:
 1. SEE TABLE 2 ON PAGE 4 FOR AVAILABLE RATIOS.
 2. MAXIMUM DRIVE SHAFT LENGTH: 45 INCHES
 MAXIMUM U-JOINT ANGLE: 3°

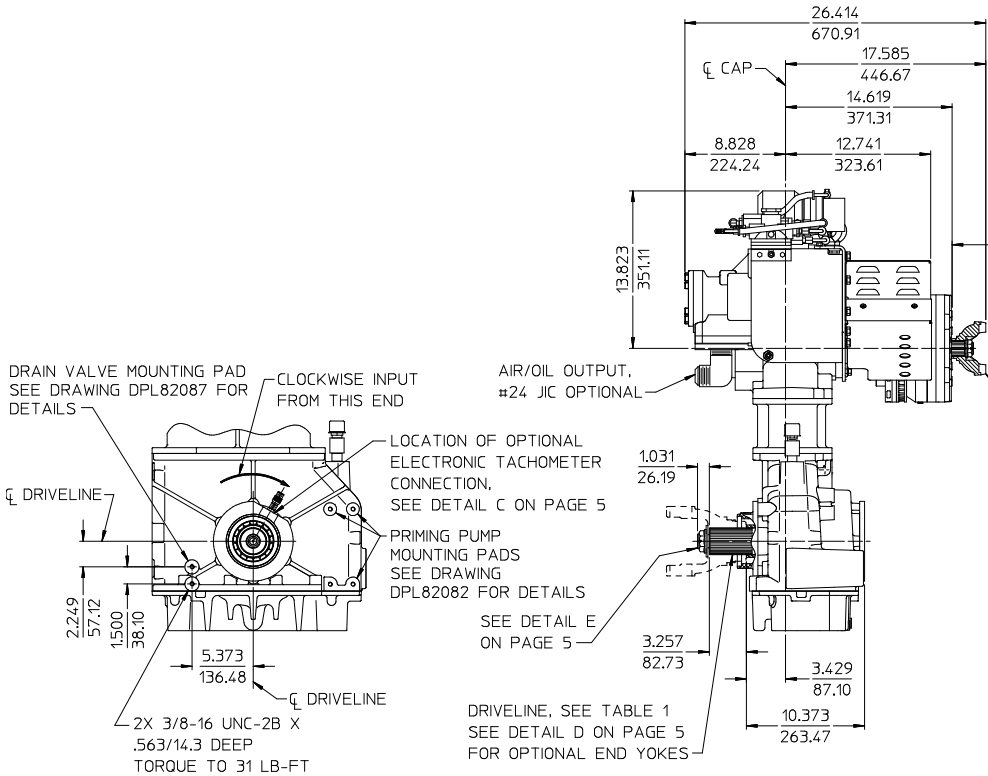


ALL DIMENSIONS SHOWN AS INCH/MILLIMETER
 (INCH / MILLIMETER)

TC20 SERIES P.T.O.
 DPL83001
 WATEROUS COMPANY
 SOUTH ST. PAUL, MN 55075
 PAGE 2 OF 9

TABLE 1 - AVAILABLE DRIVELINES / MODELS								
DRIVELINE			OPTIONAL END YOKES AND COMPANION FLANGES AVAILABLE FROM WATEROUS, SEE DETAIL D ON PAGE 5				PTO MODELS	
TYPE	SIZE	SPLINE	YOKE		CROSS AND BEARING KIT	COMPANION FLANGE		
			SPICER SERIES	PART NUMBER		SPICER SERIES		PART NUMBER
EXTRA HEAVY DUTY	2.35 INCH	2.35-46T INVOLUTE	1710	V 2837	V 2839	1480/1610	V 3719	TC20B, TC20C, TC20D, TC20E, TC20F
			1810	V 2838	V 2840			
			SPL140	V 3388	V 3389	1710/1810	V 3619	

- NOTES:
 1. SEE TABLE 2 ON PAGE 4 FOR AVAILABLE RATIOS.
 2. MAXIMUM DRIVE SHAFT LENGTH: 45 INCHES
 MAXIMUM U-JOINT ANGLE: 3°

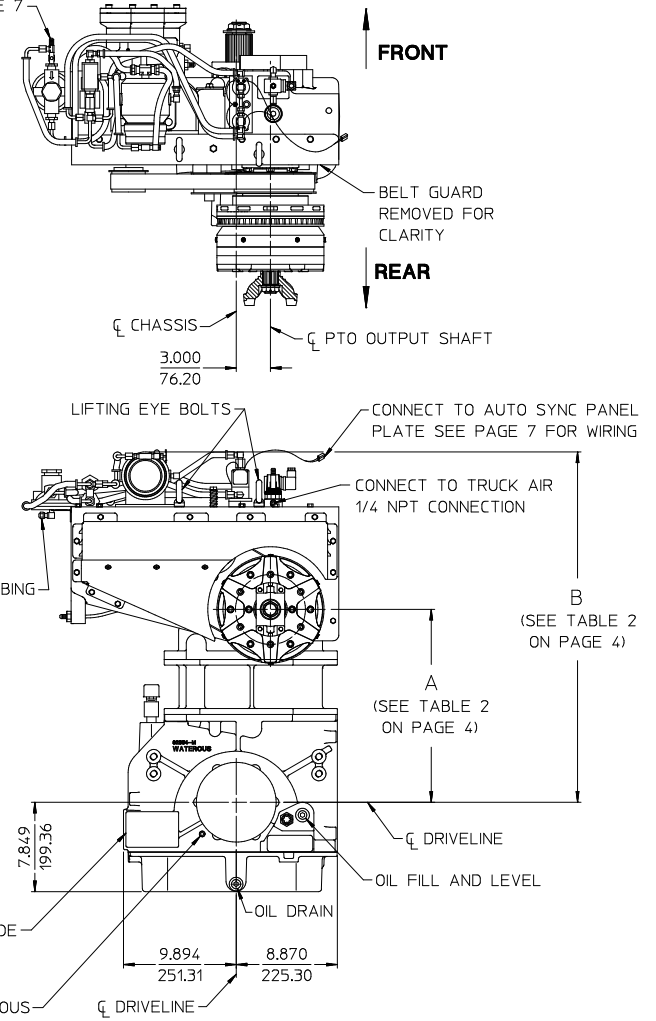


ALL DIMENSIONS SHOWN AS INCH/MILLIMETER
 (INCH / MILLIMETER)

**TC20 MODELS
 INPUT SHAFT ONLY**

CLUTCH AND YOKE MOUNTED ON REAR (OUTPUT SHAFT SIDE) OF PTO
 CLOCKWISE INPUT, MODEL TC20E, 2.27 RATIO SHOWN

CONNECT TO AIR SUPPLY DOWNSTREAM OF SEPARATOR FILTER AND UPSTREAM OF MIN. PRESSURE VALVE. #4 JIC. SEE PAGE 7



TC20 SERIES P.T.O.
 DPL83001
 WATEROUS COMPANY
 SOUTH ST. PAUL, MN 55075
 PAGE 3 OF 9

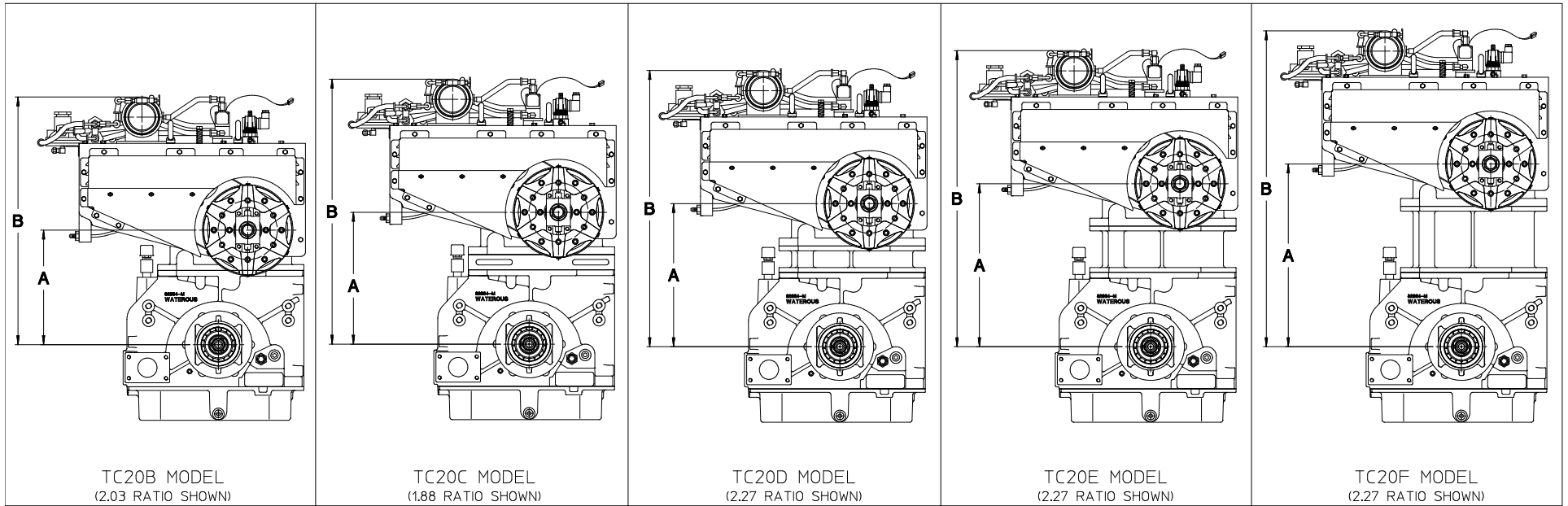


TABLE 2 - AVAILABLE RATIOS

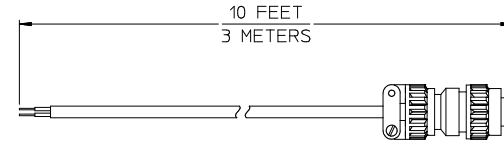
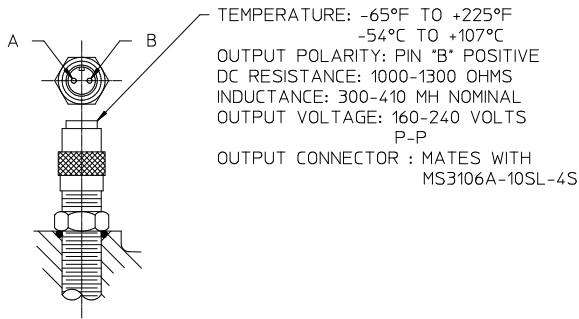
DRIVE TO DRIVEN RATIO	TC20B		TC20C		TC20D		TC20E		TC20F	
	DIMENSION A	DIMENSION B	DIMENSION A	DIMENSION B	DIMENSION A	DIMENSION B	DIMENSION A	DIMENSION B	DIMENSION A	DIMENSION B
1.58	12.205/310.01	26.028/661.12	13.756/349.40	27.579/700.51	14.788/375.62	28.611/726.73	16.830/427.48	30.653/778.59	18.861/479.07	32.684/830.18
1.69	12.290/312.17	26.113/663.28	13.839/351.51	27.662/702.62	14.876/377.85	28.699/728.96	16.923/429.84	30.746/780.95	18.961/481.61	32.784/832.72
1.79	11.958/303.73	25.781/654.84	14.045/356.74	27.868/707.85	15.072/382.83	28.895/733.94	17.127/435.03	30.950/786.14	19.168/486.87	32.991/837.98
1.88	12.129/308.08	25.952/659.19	13.690/347.73	27.513/698.84	14.717/373.81	28.540/724.92	16.773/426.03	30.596/777.14	18.809/477.75	32.632/828.86
1.97	12.306/312.57	26.129/663.68	13.870/352.30	27.693/703.41	14.912/378.76	28.735/729.87	16.970/431.04	30.793/782.15	19.012/482.90	32.835/834.01
2.03	11.896/302.16	25.719/653.27	13.984/355.19	27.807/706.30	15.028/381.71	28.851/732.82	17.086/433.98	30.909/785.09	19.132/485.95	32.955/837.06
2.27	12.240/310.90	26.063/662.01	13.811/350.80	27.634/701.91	14.856/377.34	28.679/728.45	16.920/429.77	30.743/780.88	18.971/481.86	32.794/832.97

ALL DIMENSIONS SHOWN AS INCH/MILLIMETER

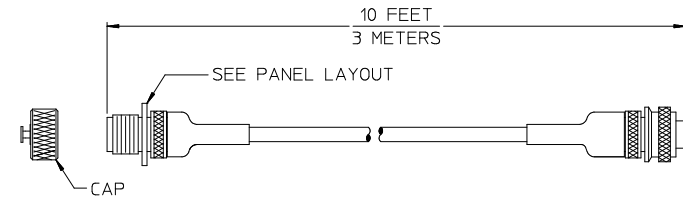
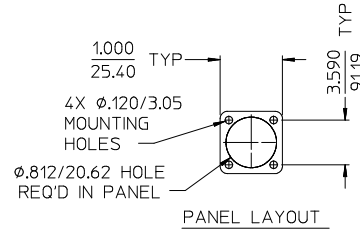
(INCH
MILLIMETER)

RATIO AND DROP DIMENSIONS

TC20 SERIES P.T.O.
DPL83001
WATEROUS COMPANY
SOUTH ST. PAUL, MN 55075
PAGE 4 OF 9



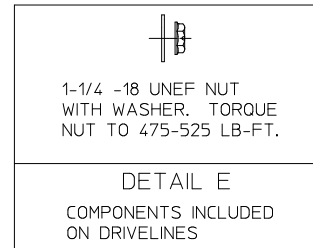
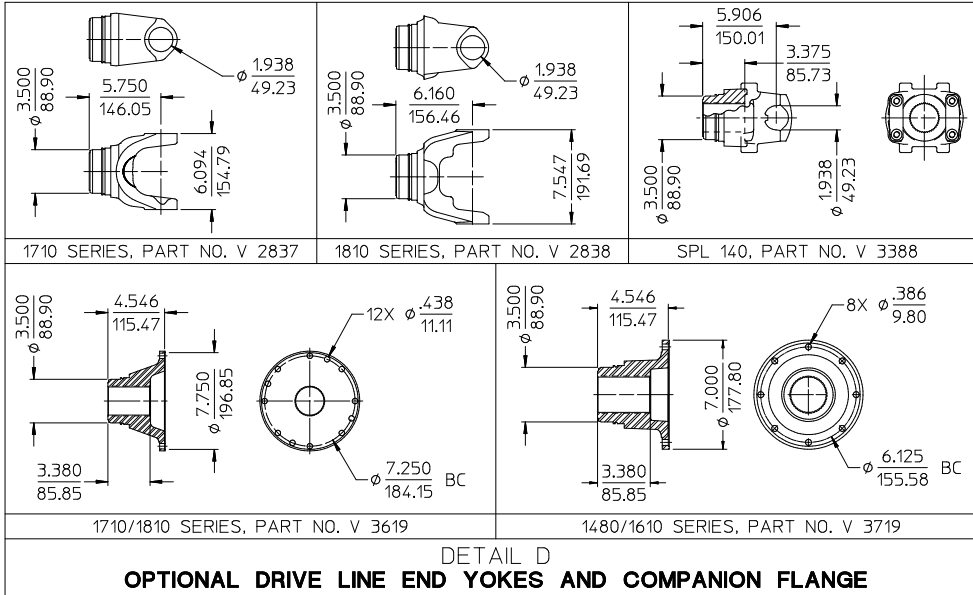
ORDER PART NO. V 3398



ORDER PART NO. 63033

OPTIONAL CABLES

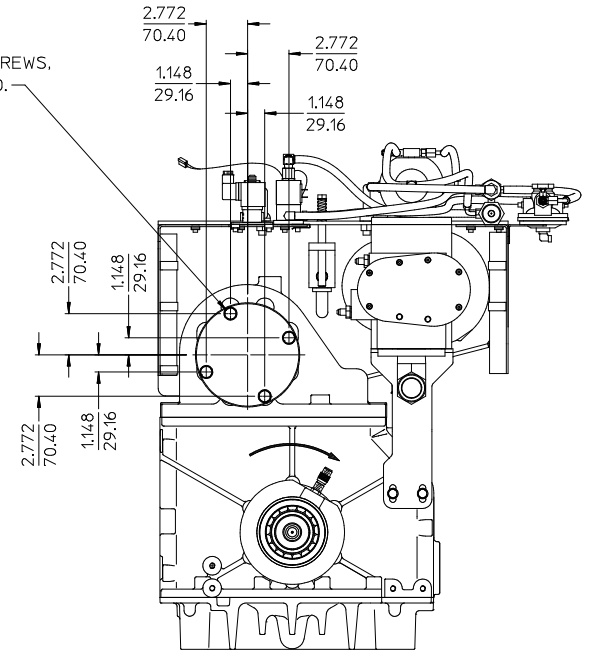
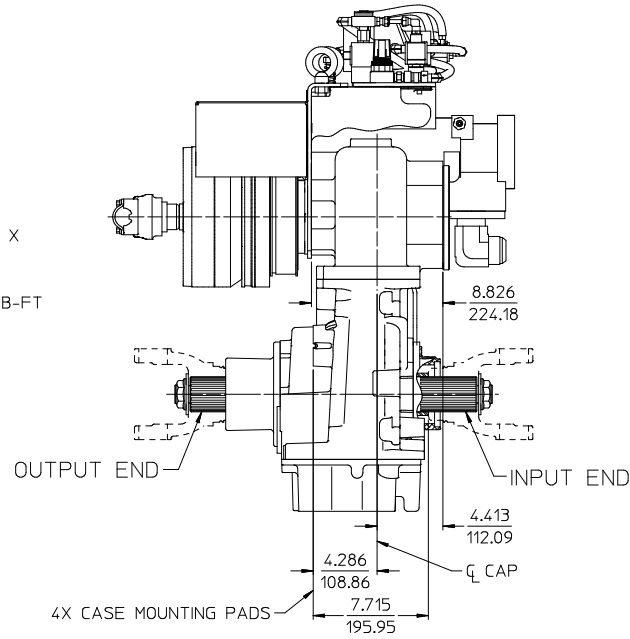
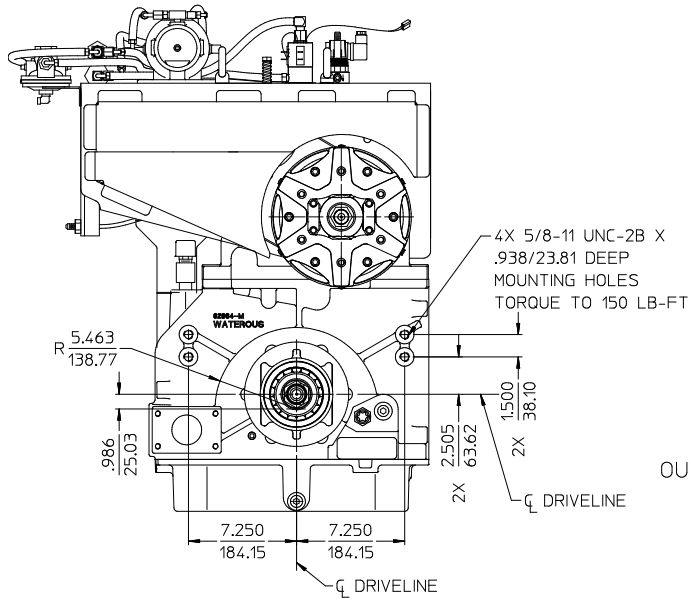
DETAIL C
OPTIONAL ELECTRONIC TACHOMETER CONNECTION



ALL DIMENSIONS SHOWN AS INCH/MILLIMETER
 (INCH)
 (MILLIMETER)

TC20 SERIES P.T.O.
 DPL83001
 WATEROUS COMPANY
 SOUTH ST. PAUL, MN 55075
 PAGE 5 OF 9

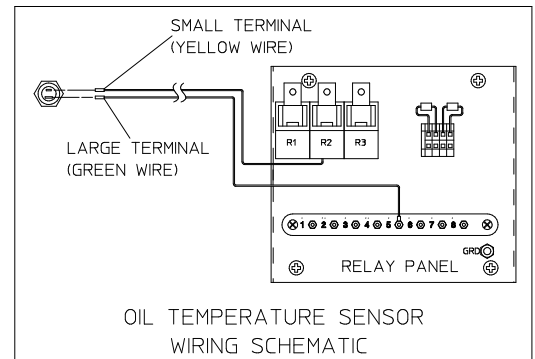
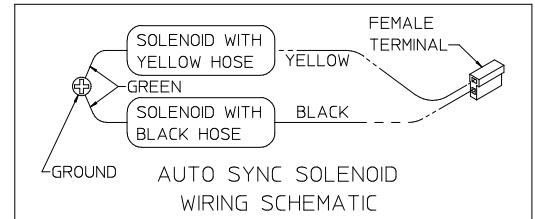
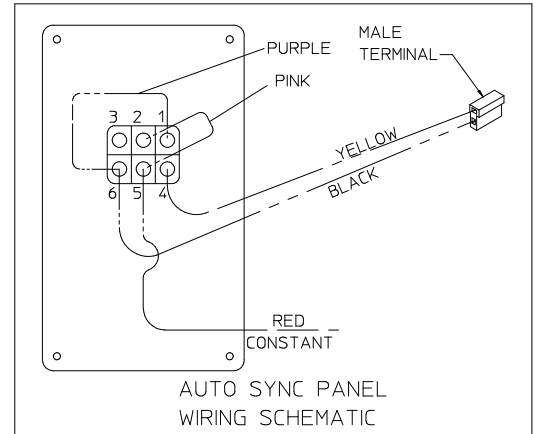
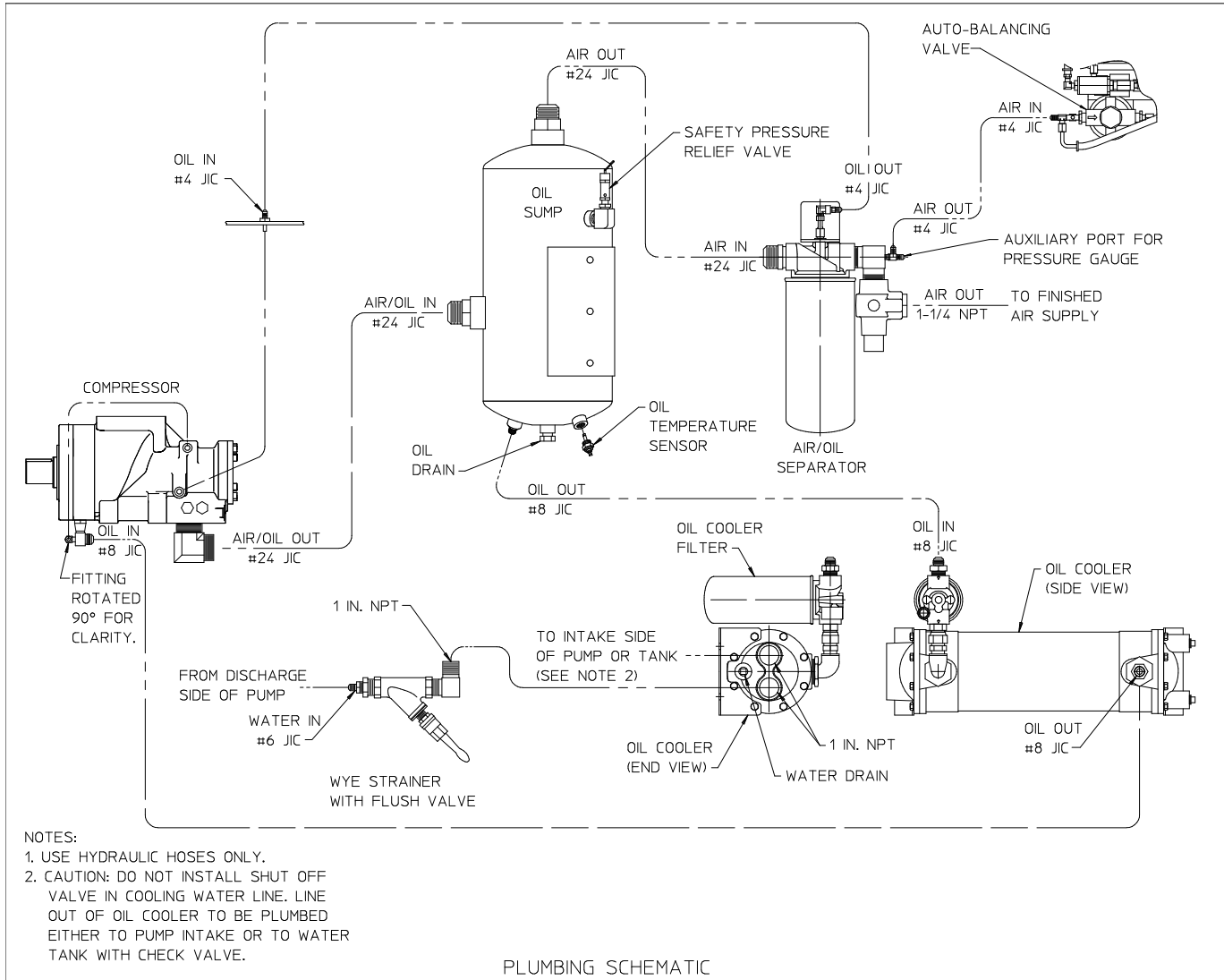
REPLACE 1/2-13 X 1-1/4 IN. HEX HEAD SCREWS WITH LONGER SCREWS,
LENGTH DEPENDENT ON THE THICKNESS OF THE BRACKET USED.



ALL DIMENSIONS SHOWN AS INCH/MILLIMETER

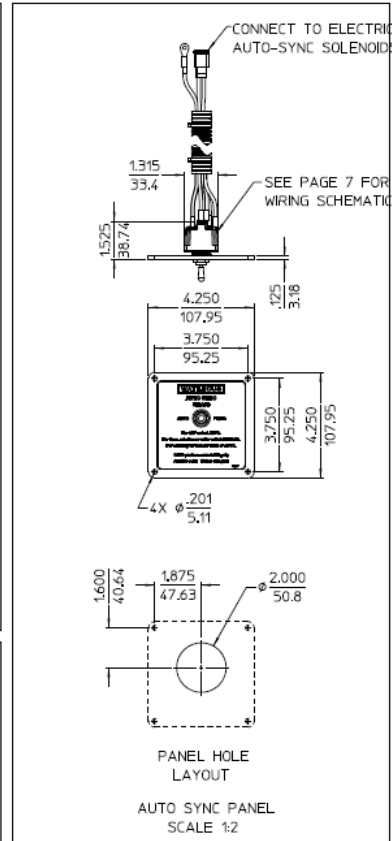
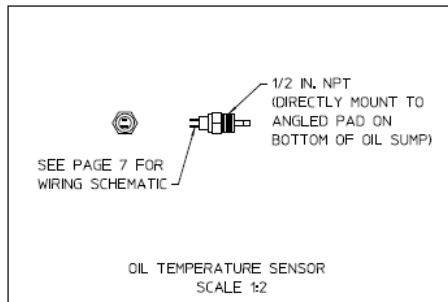
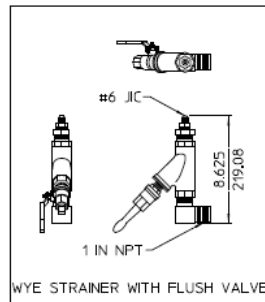
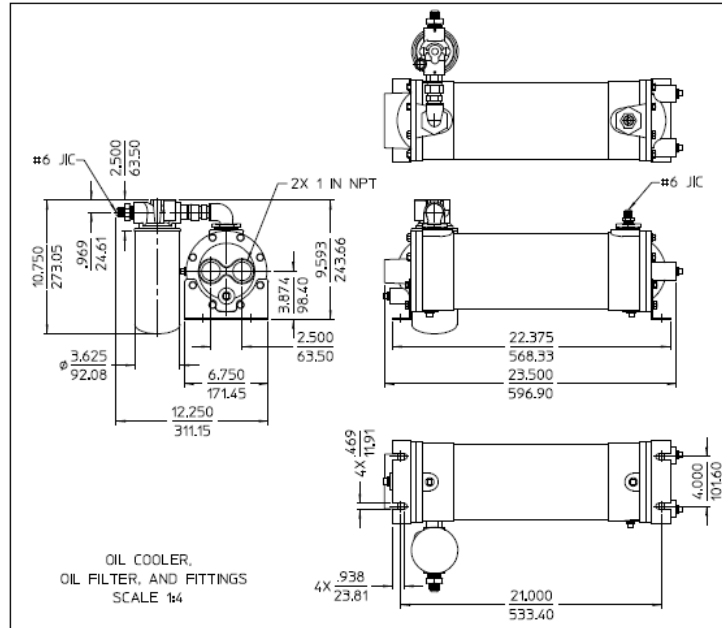
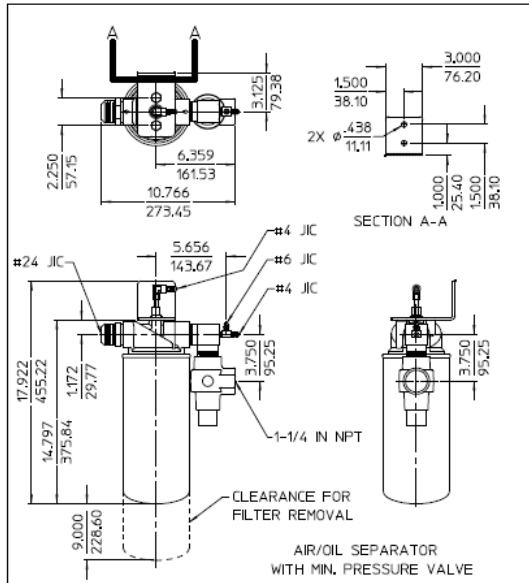
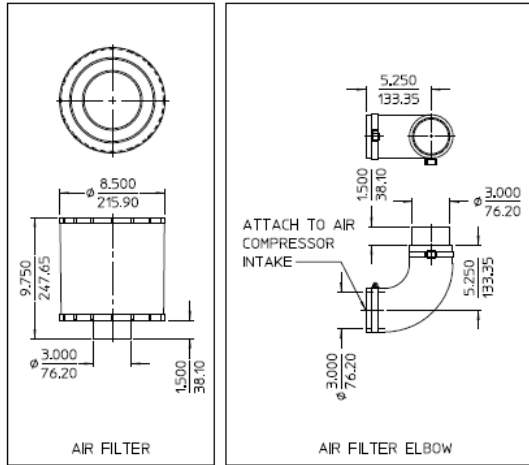
($\frac{\text{INCH}}{\text{MILLIMETER}}$)

MOUNTING BRACKET ATTACHMENT LOCATIONS



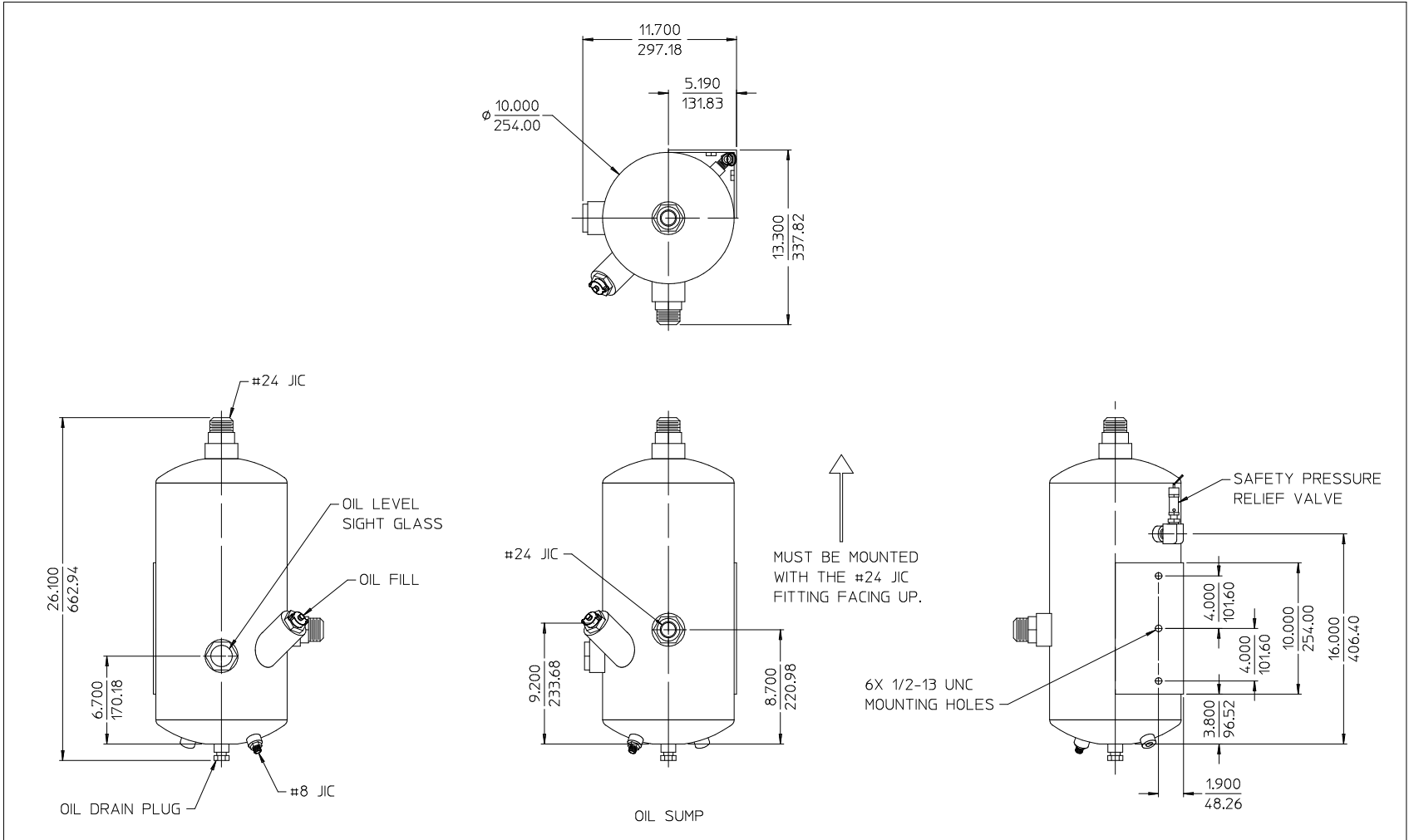
ALL DIMENSIONS SHOWN AS INCH/MILLIMETER
(INCH / MILLIMETER)

ELECTRICAL AND PLUMBING SCHEMATICS



ITEMS SHIPPED LOOSE

- NOTES:**
1. SEE PAGE 7 FOR PLUMBING OF ALL OIL, WATER, AND AIR LINES.
 2. SEE PAGE 9 FOR OIL SUMP DETAILS.



NOTES:

1. SEE PAGE 7 FOR PLUMBING OF ALL OIL, WATER, AND AIR LINES.
2. OIL LEVEL IN OIL RESERVOIR SHOULD BE AT LOWER ELEVATION THAN COMPRESSOR. IF OIL RESERVOIR MUST BE PLACED HIGHER THAN COMPRESSOR, CONTACT PNEUMAX FOR ADDITIONAL PARTS THAT MUST BE INSTALLED.

ITEMS SHIPPED LOOSE

ALL DIMENSIONS SHOWN AS INCH/MILLIMETER
 (INCH / MILLIMETER)

TC20 SERIES P.T.O.
 DPL83001
 WATEROUS COMPANY
 SOUTH ST. PAUL, MN 55075
 PAGE 9 OF 9