

Issued: 01/76  
Revised: 09/25/02

**W A T E R O U S**

WATEROUS COMPANY  
SOUTH ST. PAUL, MINNESOTA

## VPE & VPES PRIMING PUMPS

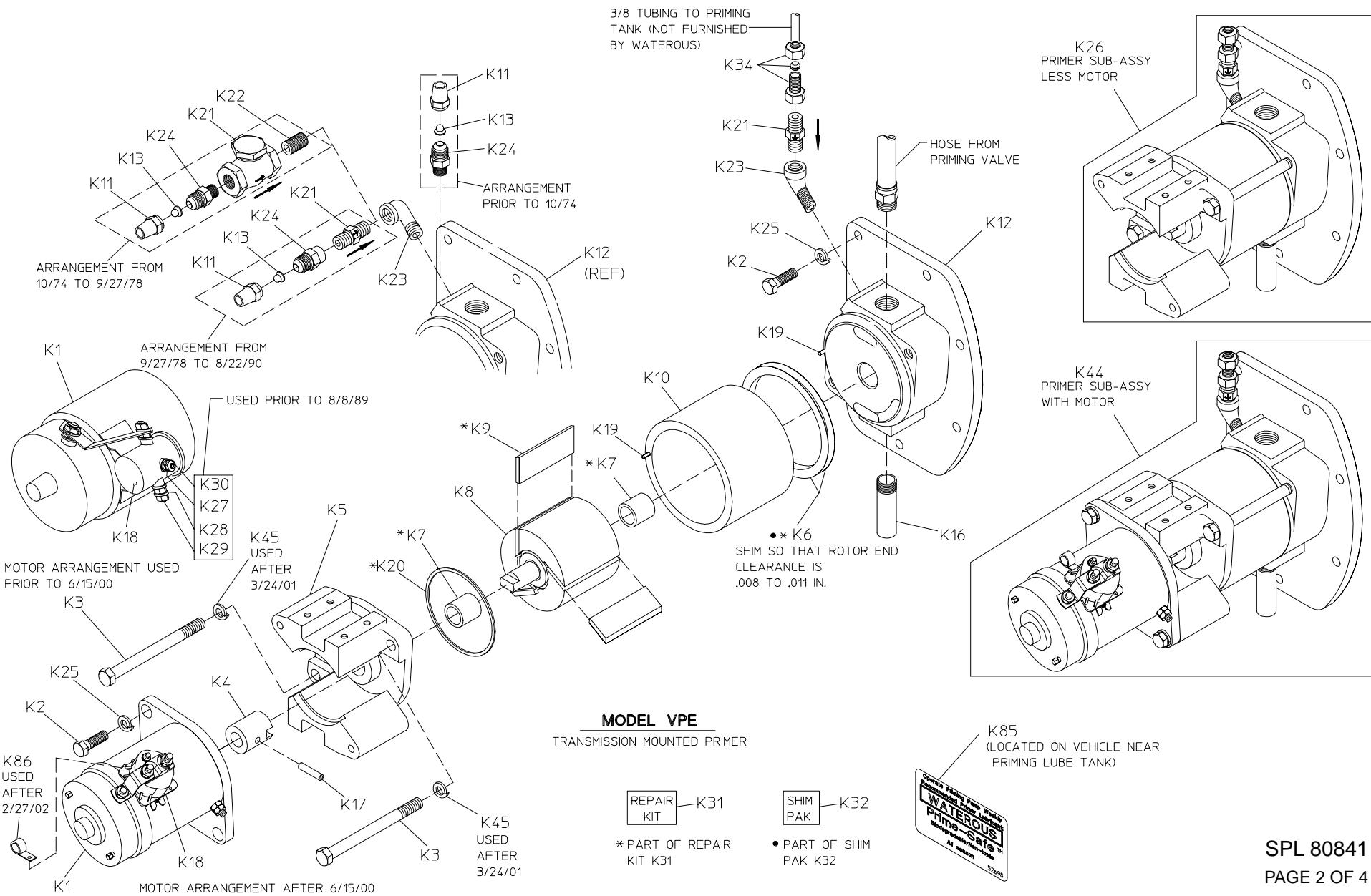
REF NO.	DESCRIPTION	REF NO.	DESCRIPTION
K1	Priming pump motor assembly (includes K4, K17 & K18)	K24	Flare half union coupling, 1/4 NPT x 3/8 tube (used prior to 8/22/90)
K2	Hex hd screw, 3/8-16 x 1-1/4 in., grade 5 (Y, W transmissions)	K25	Lock washer, 3/8 in. (Y, W transmissions)
K2	Hex hd screw, M10 x 30mm, grade 8.8 (C10 transmission)	K25	Lock washer, M10 (C10 transmission)
K3	Hex hd screw, 7/16-14 x 5 in.	K26	Primer subassembly (less motor)
K4	Shaft coupling	K27	Lock washer, #10 (used prior to 8/8/89)
K5	Front head subassembly (includes K7 & K19)	K28	Lock washer, 5/16 in. (used prior to 8/8/89)
K6	Shim, 0.005 in. thick (blue) (also see K32)	K29	Hex nut, 1/4-28 (used prior to 8/8/89)
K6	Shim, 0.0075 in. thick (transparent matte) (also see K32)	K30	Hex nut, 10-32 (used prior to 8/8/89)
K6	Shim, 0.010 in. thick (brown) (also see K32)	K31	Repair kit (includes K6, K7, K9 & K20)
K7	Shaft bearing	K32	Shim pak (includes K6, .005, .0075 & .010 thick shims)
K8	Rotor and shaft assembly (sold as assembly only)	K33	Compression elbow, 90° (used after 8/22/90)
K9	Vane	K34	Compression connection, straight (used after 8/22/90)
K10	Cylinder	K35	Street elbow, 90°, 3/4 in.
K11	Flared tube nut, 3/8 in. (used prior to 8/22/90)	K36	Reducing bushing, 3/4 in. x 3/8 in.
K12	Rear head subassembly (includes K7)	K37	Pipe nipple, 3/8 x 1 in.
K13	Orifice (used prior to 8/22/90)	K38	Ball valve, 3/8 in.
K14	Flared tube elbow, 1/4 NPT x 3/8 tube (used prior to 8/22/90)	K39	Male tube elbow, 90°, 3/8 in.
K15	Street elbow, 90°, 3/4 in.	K40	Street elbow, 90°, 1/4 in.
K16	Discharge pipe	K42	Pipe coupling, 1/4 in.
K17	Roll pin, SS, 1/4 x 1-1/8 in.	K43	Return fitting
K18	Solenoid switch, priming motor	K44	Primer subassembly (with motor)
K19	Groove pin, 1/8 x 5/8, SS	K45	Lockwasher, 7/16 in.
K20	O-ring, 3-3/4 x 3-7/8 in.	K85	Prime-Safe™ lubricant decal
K21	Check valve (includes orifice after 8/22/90)	K86	Wire clamp
K22	Pipe nipple, 1/4 x 7/8 in. (used prior to 9/27/78)		
K23	Street elbow, 90°, 1/4 in. (used prior to 1/15/96)		
K23	Street elbow, 45°, 1/4 in. (used after 1/15/96)		

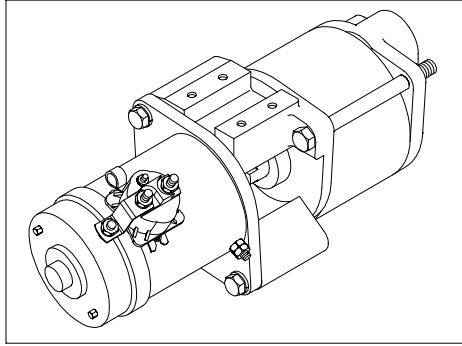
### PLEASE NOTE

**WHEN ORDERING PARTS PLEASE SUPPLY PUMP SERIAL NUMBER**

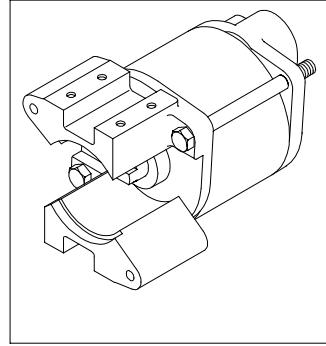
SPL80841

PAGE 1 OF 4



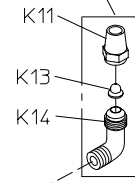


K44  
PRIMER SUB-ASSY WITH MOTOR

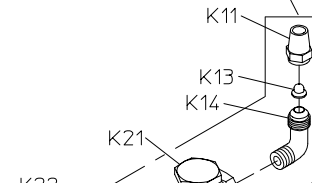


K26  
PRIMER SUB-ASSY LESS MOTOR

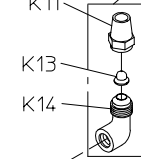
ARRANGEMENT PRIOR TO 10/74



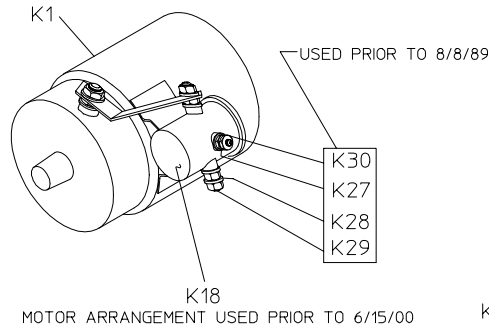
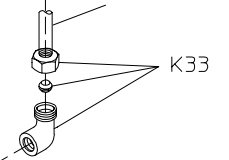
ARRANGEMENT FROM 10/74 TO 9/27/78



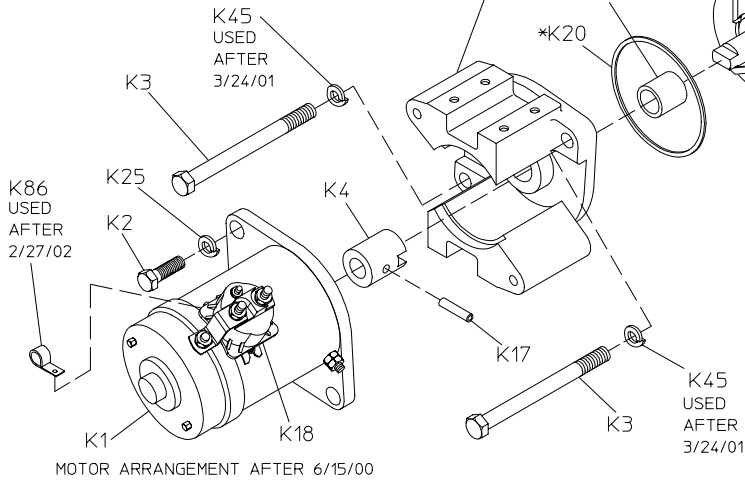
ARRANGEMENT FROM 9/27/78 TO 8/22/90



3/8 TUBING TO PRIMING TANK (NOT FURNISHED BY WATEROUS)



MOTOR ARRANGEMENT USED PRIOR TO 6/15/00



MOTOR ARRANGEMENT AFTER 6/15/00

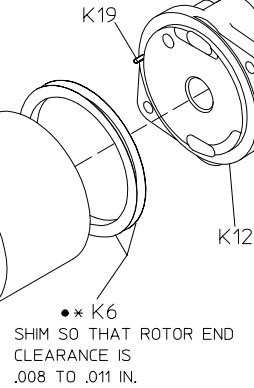
**MODEL VPES**  
SEPARATELY MOUNTED PRIMER  
(SEE NEXT PAGE FOR VPES PRIMER  
USED ON MODEL P200-B PUMP)

REPAIR KIT K31

\* PART OF REPAIR KIT K31

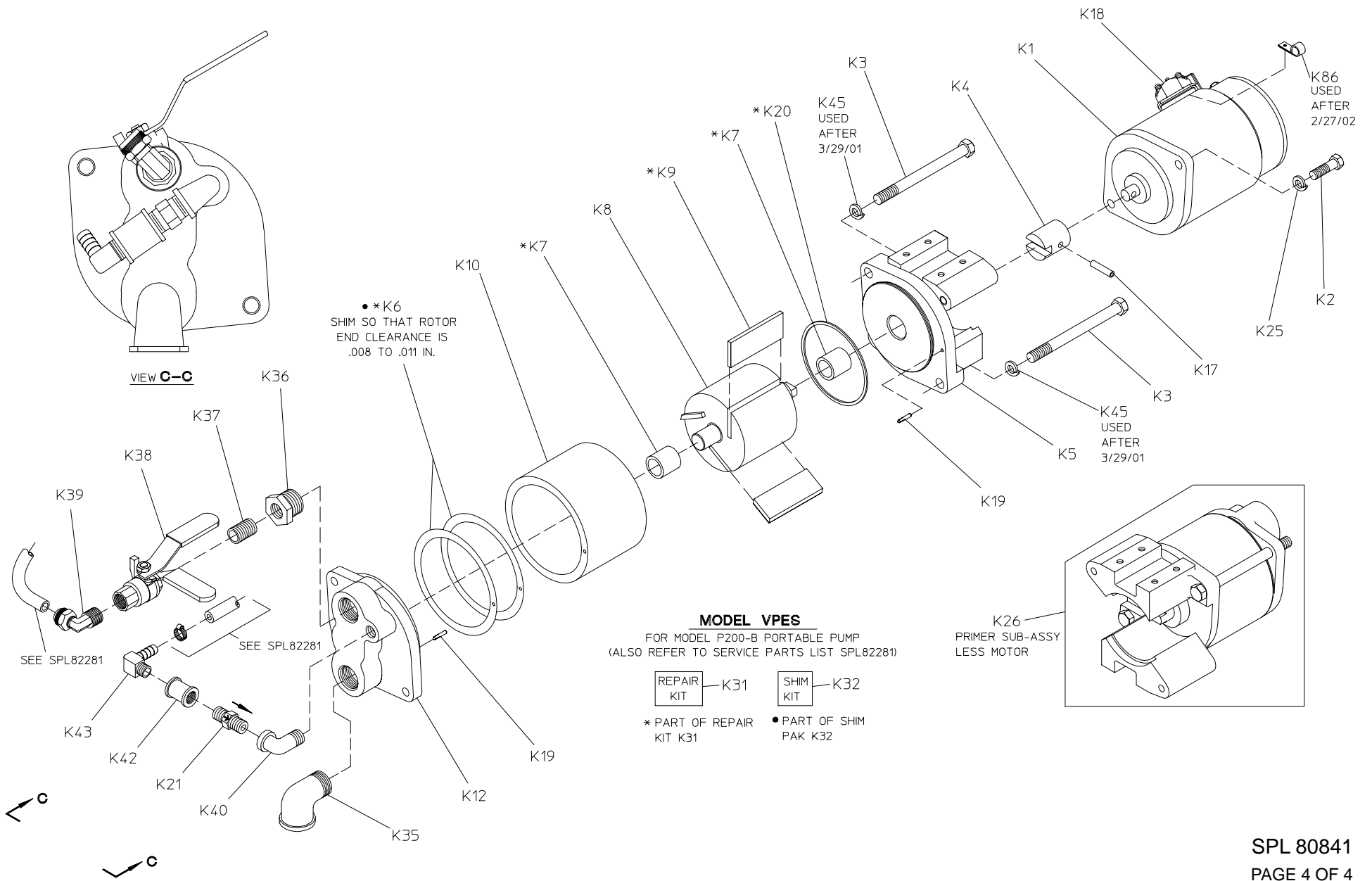
SHIM PAK K32

• PART OF SHIM PAK K32



K85 (LOCATED ON VEHICLE NEAR PRIMING LUBE TANK)





**MODEL VPES**  
 FOR MODEL P200-B PORTABLE PUMP  
 (ALSO REFER TO SERVICE PARTS LIST SPL82281)

- |                             |   |     |   |                           |   |     |
|-----------------------------|---|-----|---|---------------------------|---|-----|
| REPAIR<br>KIT               | — | K31 | — | SHIM<br>KIT               | — | K32 |
| * PART OF REPAIR<br>KIT K31 |   |     |   | ● PART OF SHIM<br>PAK K32 |   |     |