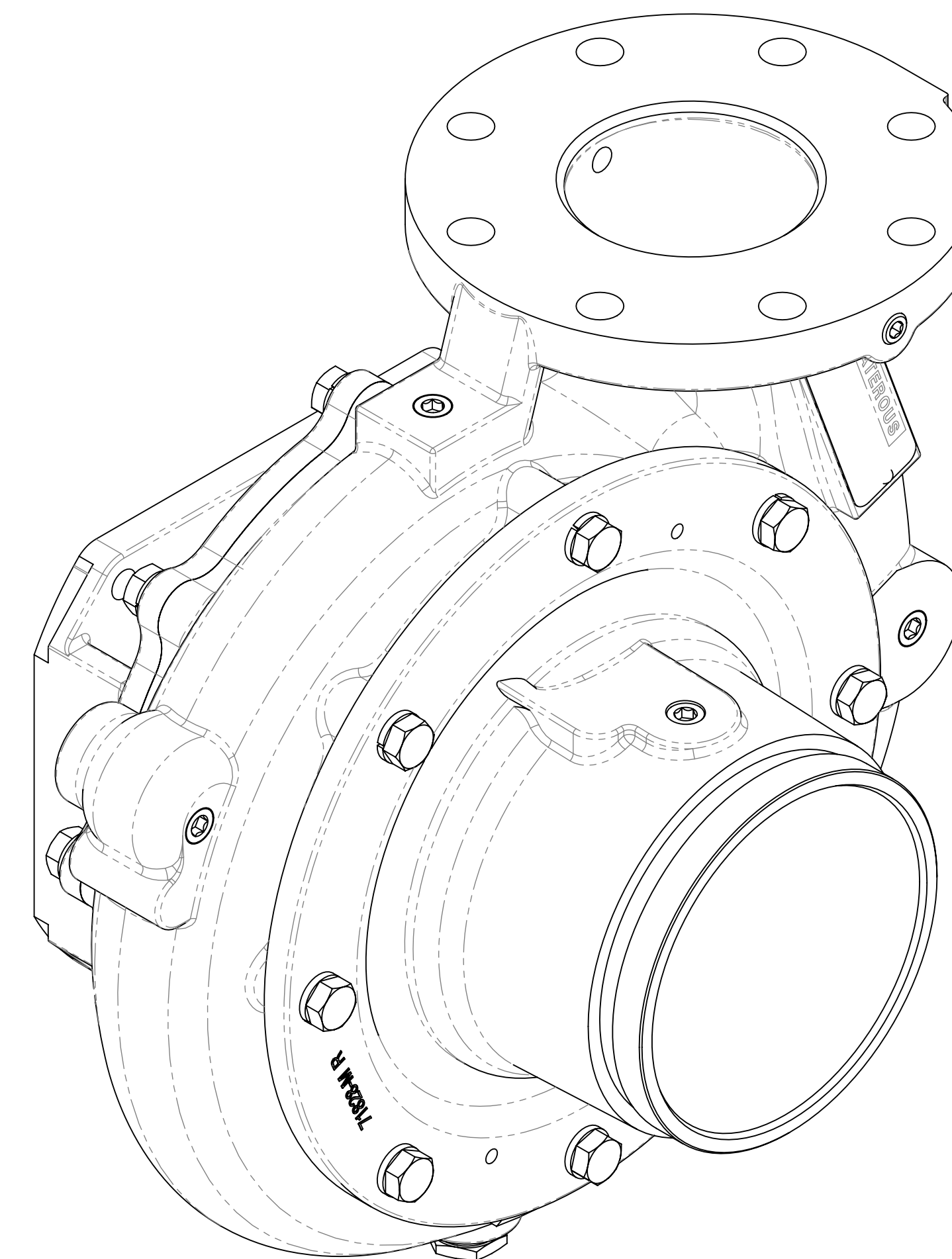
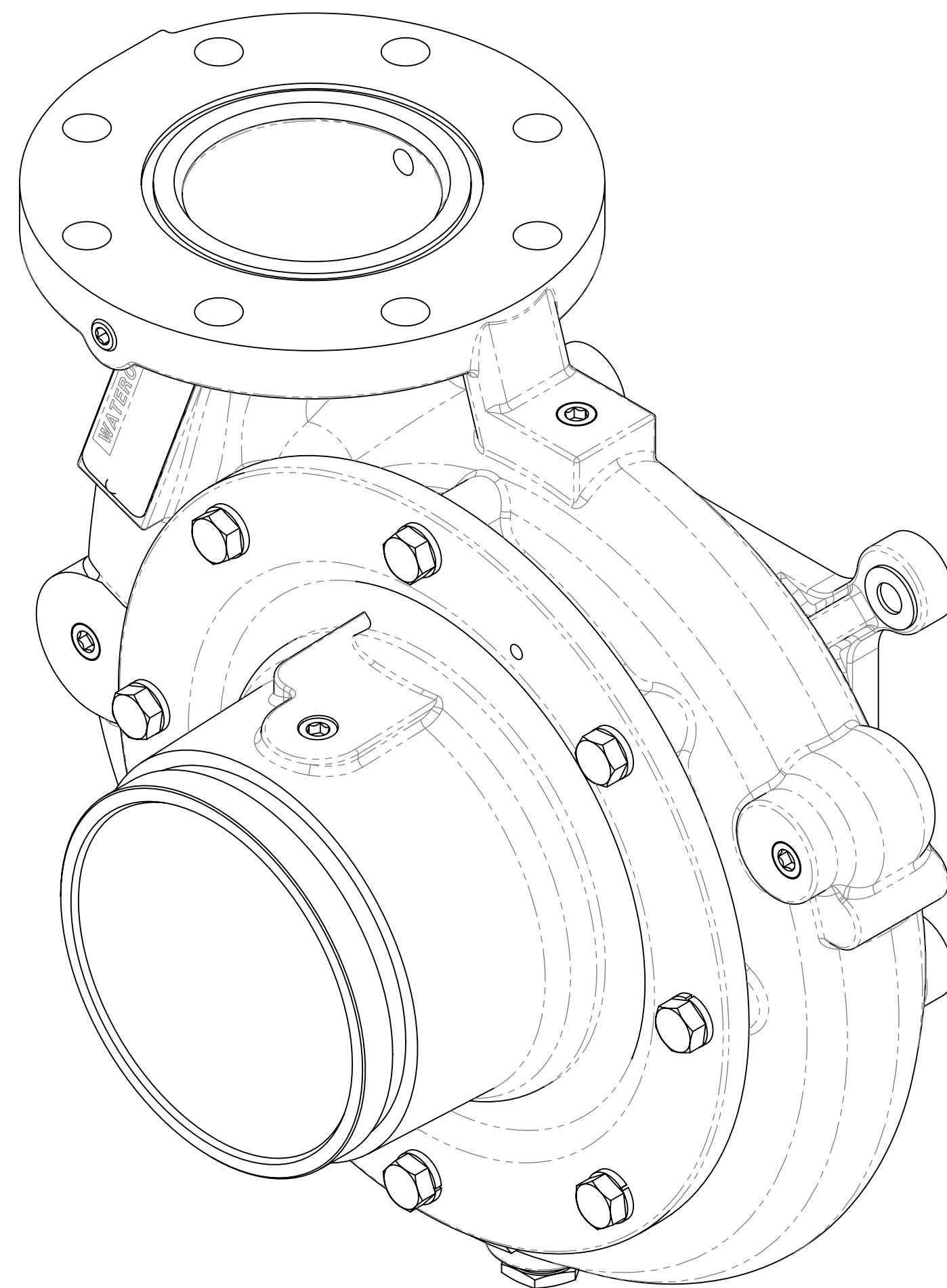


## CXV Series Pump Body Service Parts List

Index:

Pump and Transmission Model (Located on Pump Serial Plate)								See Page			
C20 Series	C10 Series	Y Series	D Series	K Series	T Series	P Series	QB Series	Body and Intake Fitting		Optional Discharge Manifold	
								One-Piece Volute	Two-Piece Volute	With 3-1/2 in. End Flanges	With 4 in. End Flanges
CXVC20B CXVC20C CXVC20D CXVC20E CXVC20F	CXVC10C CXVC10D CXVC10E CXVC10F	CXVYC CXVYD CXVYE CXVYF CXVYCX CXVYDX CXVYEX CXVYFX	--	CXVK	CXVT	CXVPA	--	2	3	8	9
--	--	--	CXD	--	--	--	--	4	5		
--	--	--	--	--	--	--	CXVQB (Front Facing)	--	6	N/A	N/A
--	--	--	--	--	--	--	CXVQB (Rear Facing)	--	7	N/A	N/A

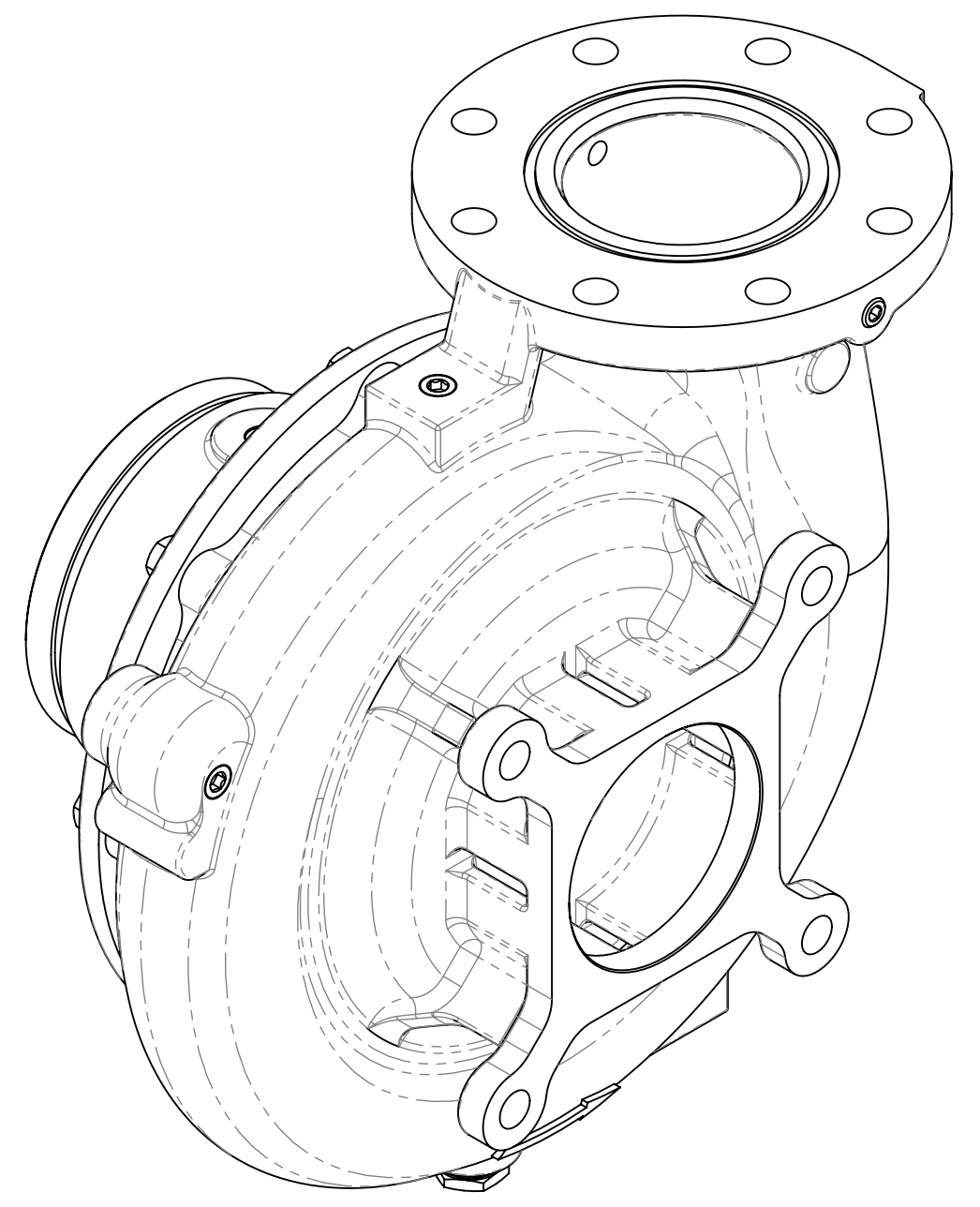
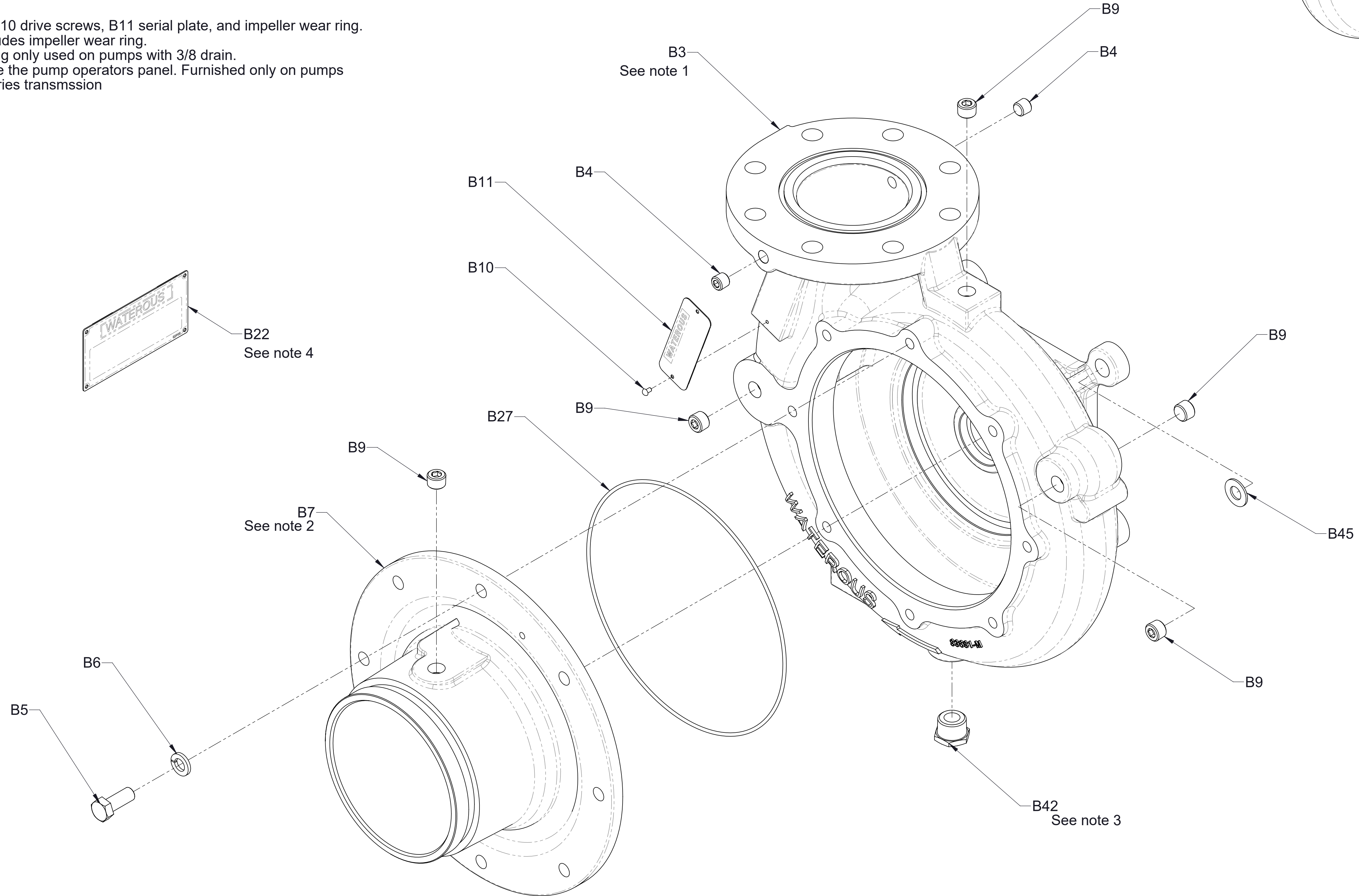




Ref No.	Description
B3	Body-Volute, CW
B4	Plug-Pipe, Headless, 1/4 NPT
B5	Screw-Hex Hd, 1/2-13 x 1-1/4 in
B6	Washer-Lock, 1/2 in
B7	Fitting-Intake, 6 Victaulic, Inducer
B9	Plug-Pipe, Headless, 3/8 NPT
B10	Screw-Drive, #6 x 1/4 in
B11	Plate-Serial
B22	Plate-Serial, Operator's Panel
B27	O-Ring, 9-3/4 x 10 in
B42	Bushing-Reducing, Pipe, 3/4 x 3/8 NPT
B45	Washer-Plain, 1/2 in

**Service Notes:**

1. B3 volute includes B10 drive screws, B11 serial plate, and impeller wear ring.
2. B7 intake fitting includes impeller wear ring.
3. B42 reducing bushing only used on pumps with 3/8 drain.
4. B22 is located on the the pump operators panel. Furnished only on pumps with a C20 or PA series transmsion



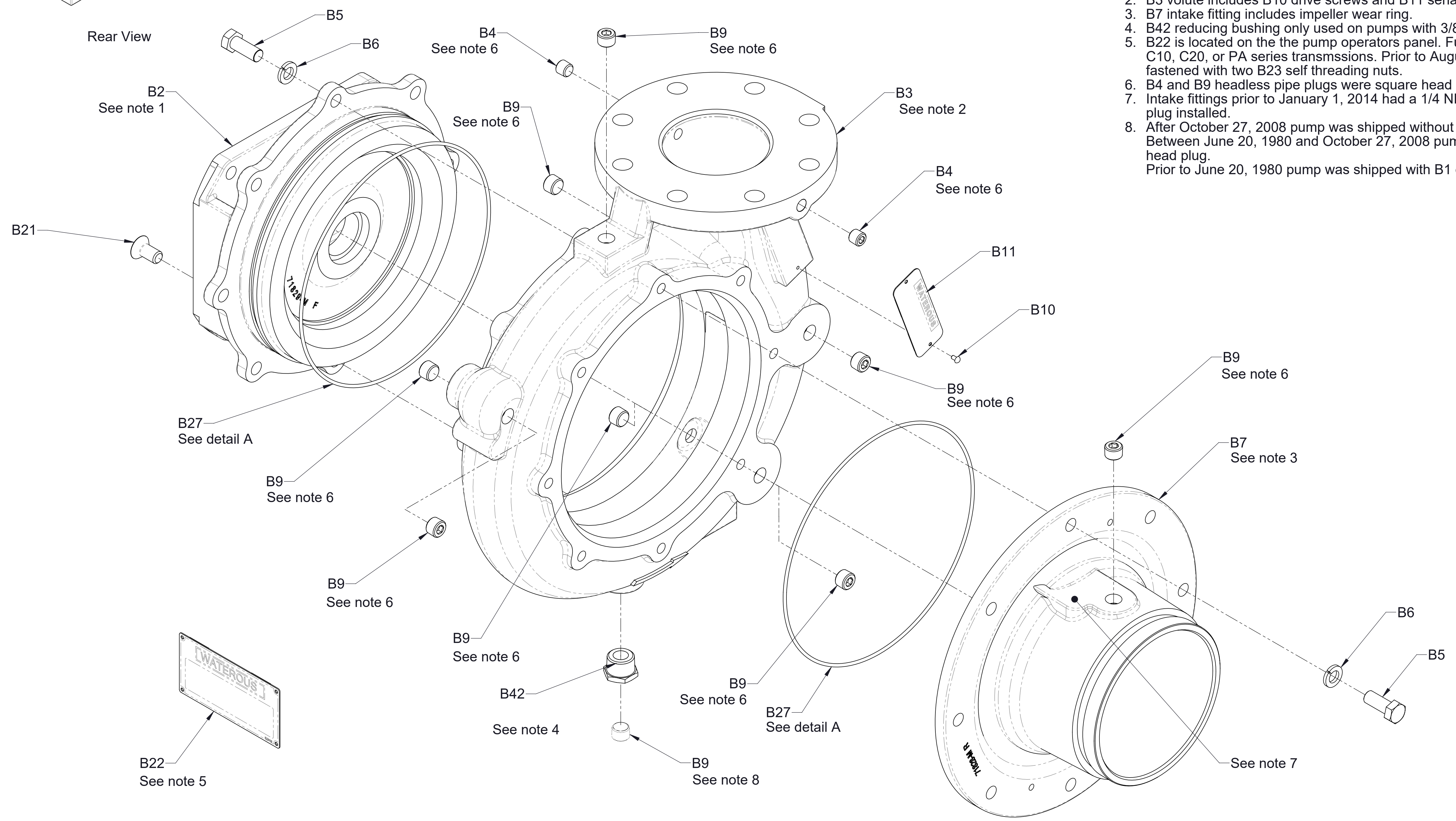
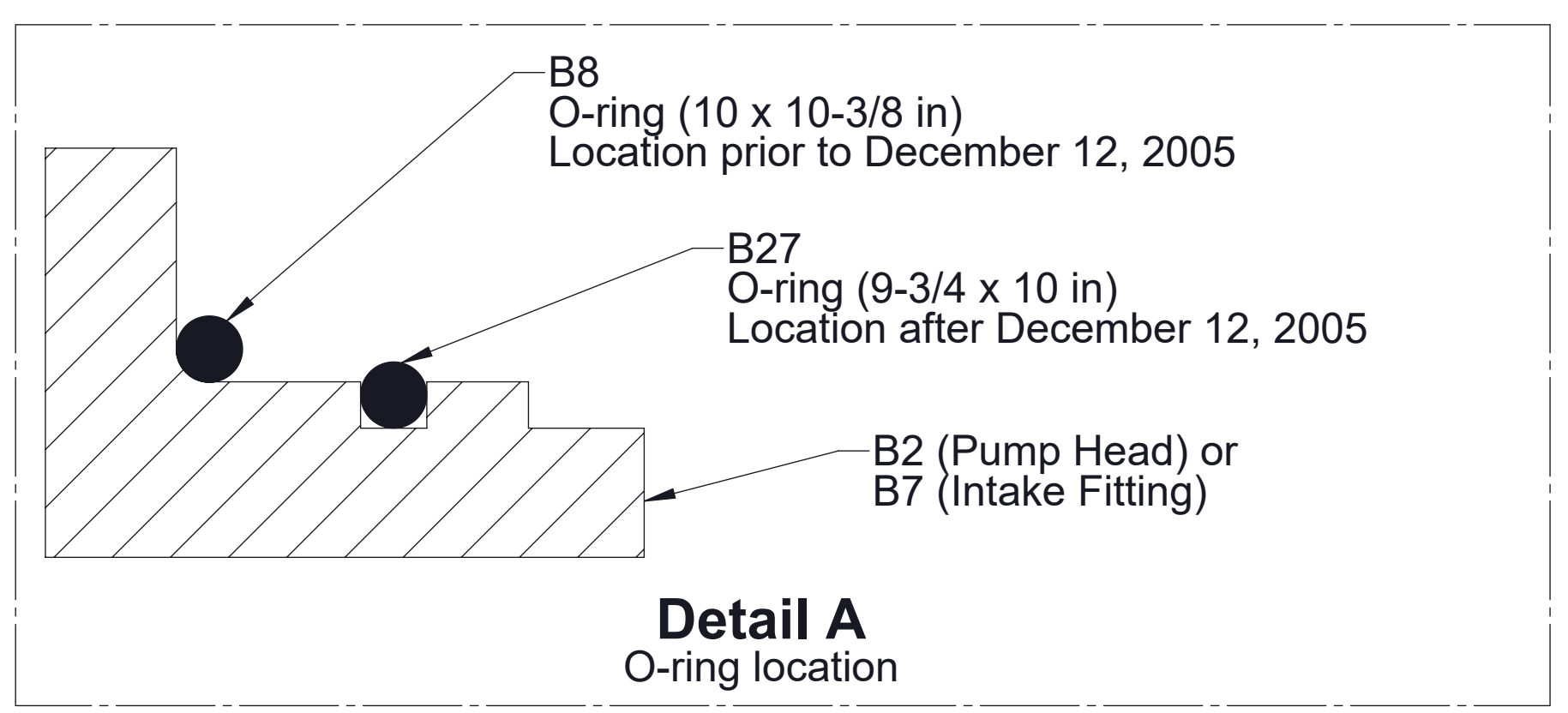
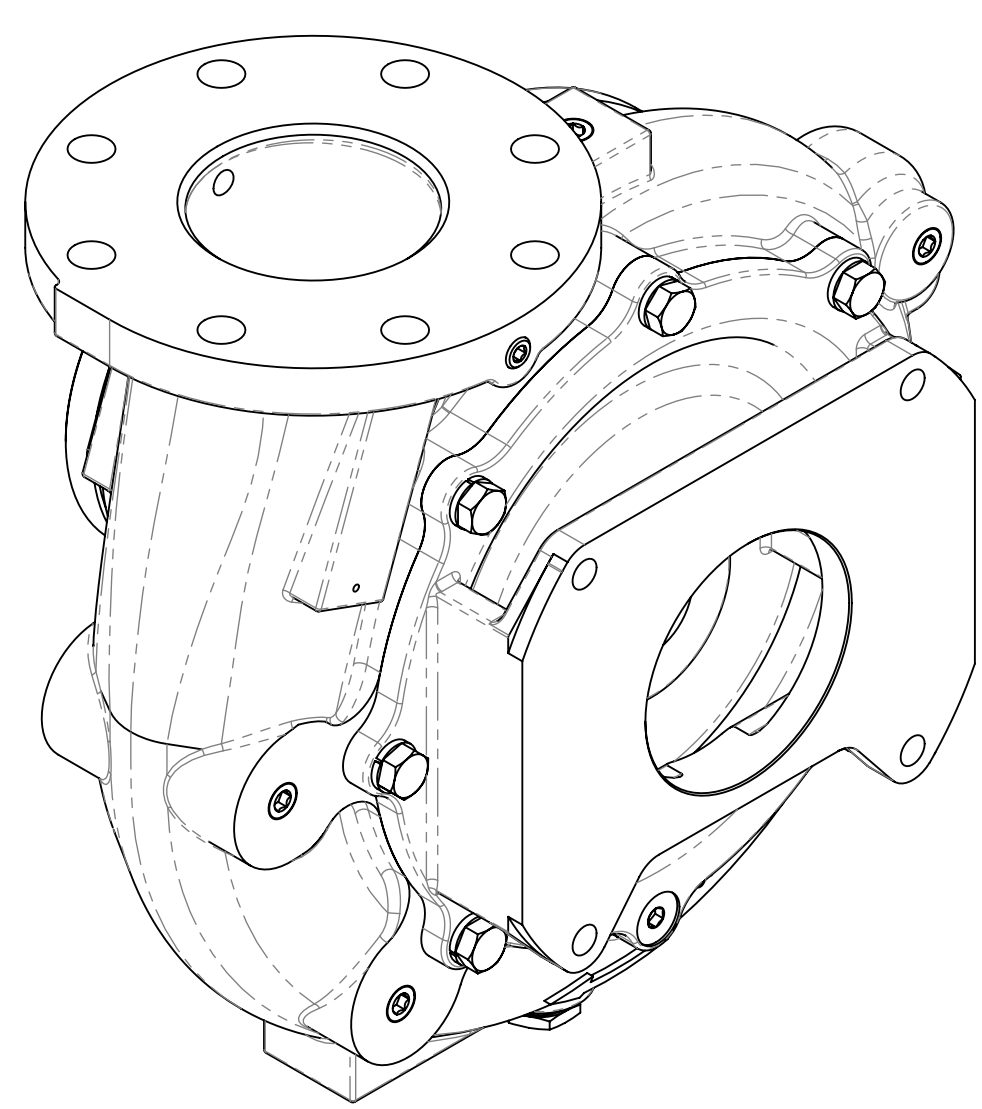
Rear View

**Body and Intake Fitting (One-Piece Volute)  
C20, K, T, and P Series Transmission**



Ref No.	Description
B2	Head-Pump (Mech Seal)
B3	Body-Volute
B4	Plug-Pipe, Headless, 1/4 NPT
B5	Screw-Hex Hd, 1/2-13 x 1-1/4 in
B6	Washer-Lock, 1/2 in
B7	Fitting-Intake, 6 Victaulic, Inducer
B9	Plug-Pipe, Headless, 3/8 NPT
B10	Screw-Drive, #6 x 1/4 in
B11	Plate-Serial
B21	Screw-Machine, Flat Hd, Hex Soc, 1/2-13 x 1 in
B22	Plate-Serial, Operator's Panel
B27	O-Ring, 9-3/4 x 10 in
B42	Bushing-Reducing, Pipe, 3/4 x 3/8 NPT

- Service Notes:
1. B2 pump head includes impeller wear ring.
  2. B3 volute includes B10 drive screws and B11 serial plate.
  3. B7 intake fitting includes impeller wear ring.
  4. B42 reducing bushing only used on pumps with 3/8 drain after March 11, 2015.
  5. B22 is located on the the pump operators panel. Furnished only on pumps with Y, C10, C20, or PA series transmsions. Prior to August 1, 2004 panel plate was fastened with two B23 self threading nuts.
  6. B4 and B9 headless pipe plugs were square head prior to October 27, 2008.
  7. Intake fittings prior to January 1, 2014 had a 1/4 NPT in this area with a B4 pipe plug installed.
  8. After October 27, 2008 pump was shipped without a drain plug. Between June 20, 1980 and October 27, 2008 pump was shipped with a square head plug. Prior to June 20, 1980 pump was shipped with B1 drain cock.



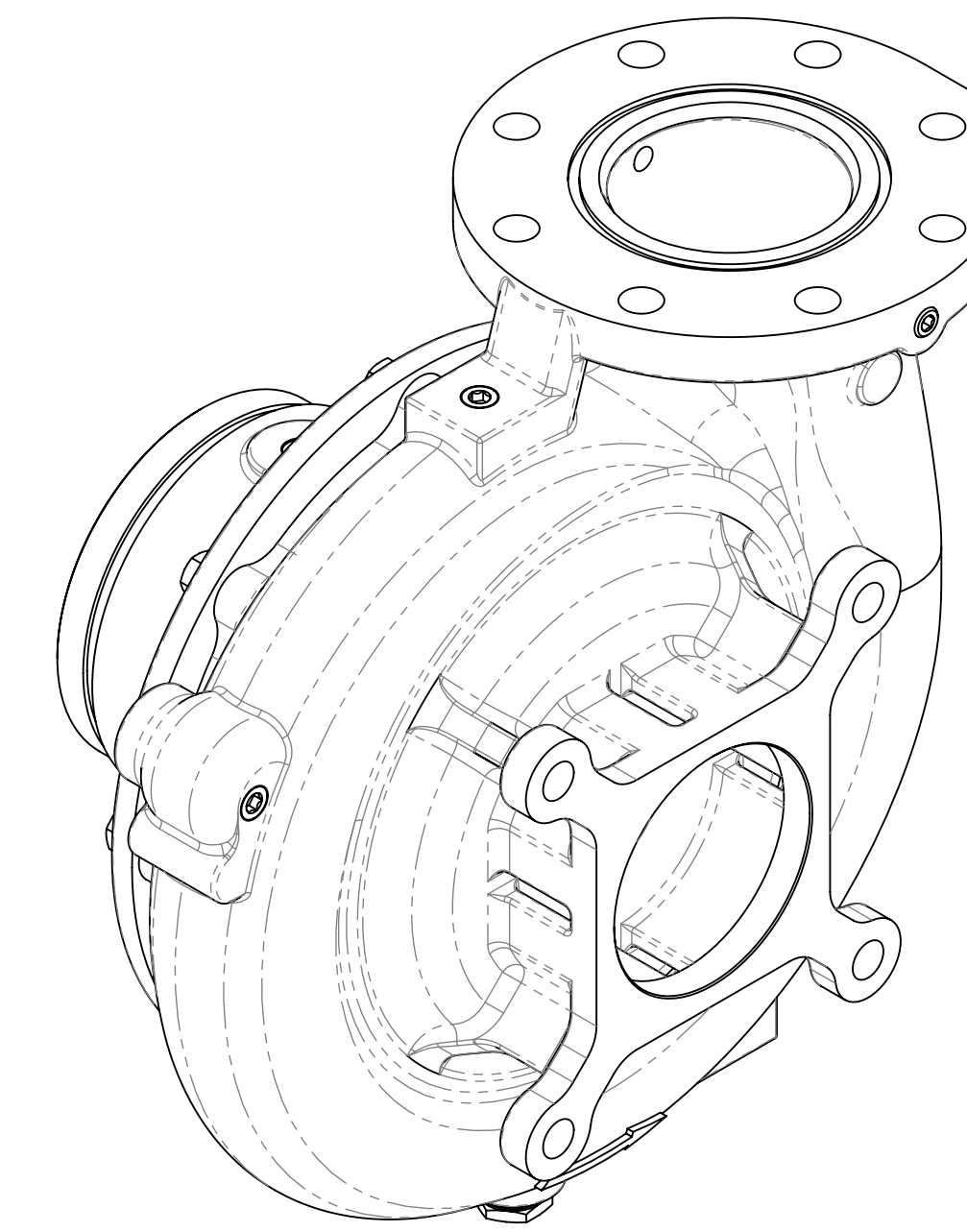
**Body and Intake Fitting (Two-Piece Volute)  
Y, C10, C20, K, T, and P Series Transmission**



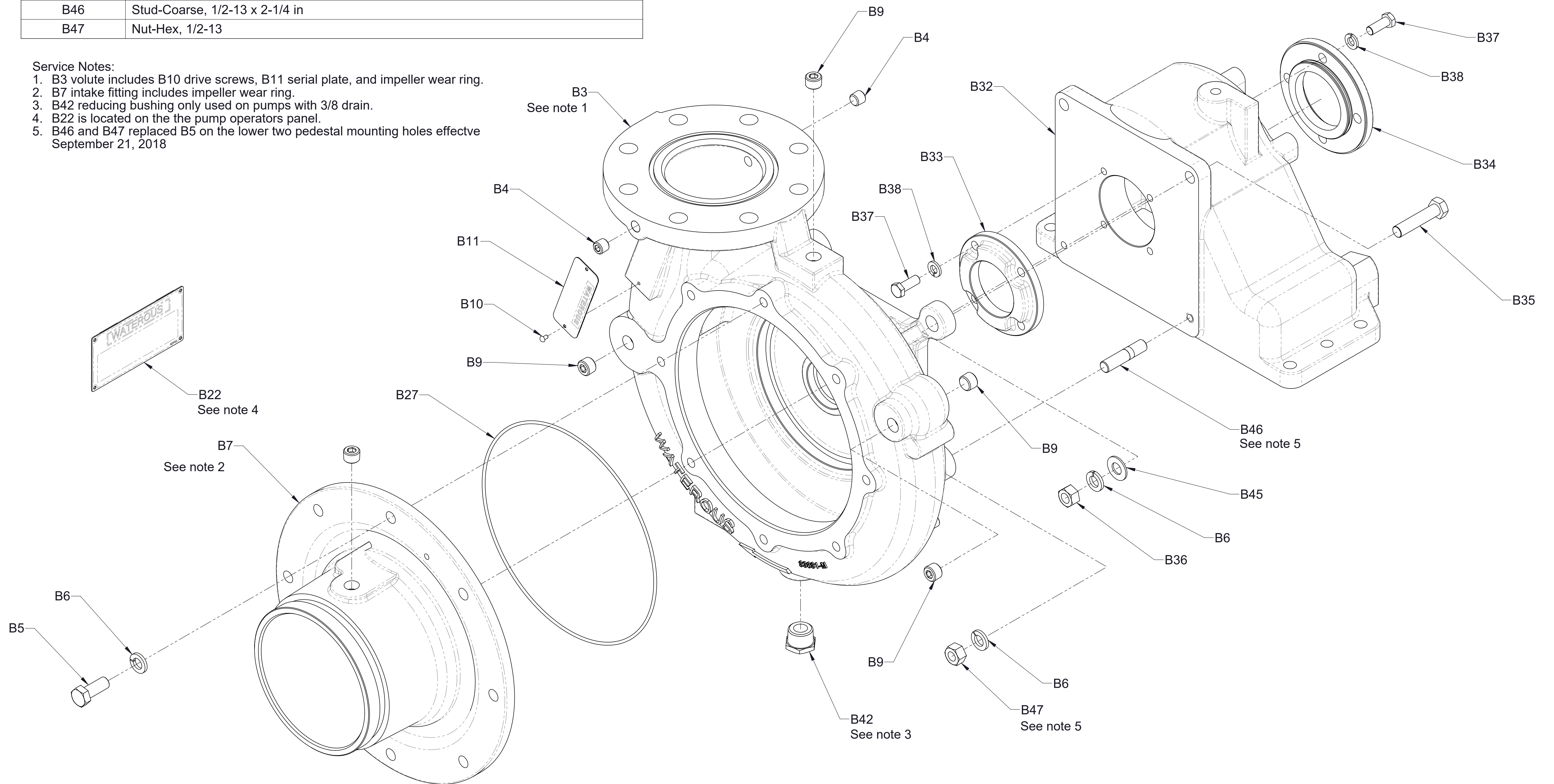
Ref No.	Description
B3	Body-Volute, CW
B4	Plug-Pipe, Headless, 1/4 NPT
B5	Screw-Hex Hd, 1/2-13 x 1-1/4 in
B6	Washer-Lock, 1/2 in
B7	Fitting-Intake, 6 Victaulic, Inducer
B9	Plug-Pipe, Headless, 3/8 NPT
B10	Screw-Drive, #6 x 1/4 in
B11	Plate-Serial
B22	Plate-Serial, Operator's Panel
B27	O-Ring, 9-3/4 x 10 in
B32	Cap-Transmission
B33	Housing-Seal, Oil
B34	Housing-Seal, Oil
B35	Screw-Hex Hd, 1/2-20 x 2-1/4 in
B36	Nut-Hex, 1/2-20
B37	Screw-Hex Hd, 3/8-16 x 1 in
B38	Washer-Lock, 3/8 in
B42	Bushing-Reducing, Pipe, 3/4 x 3/8 NPT
B45	Washer-Plain, 1/2 in
B46	Stud-Coarse, 1/2-13 x 2-1/4 in
B47	Nut-Hex, 1/2-13

**Service Notes:**

1. B3 volute includes B10 drive screws, B11 serial plate, and impeller wear ring.
2. B7 intake fitting includes impeller wear ring.
3. B42 reducing bushing only used on pumps with 3/8 drain.
4. B22 is located on the the pump operators panel.
5. B46 and B47 replaced B5 on the lower two pedestal mounting holes effective September 21, 2018

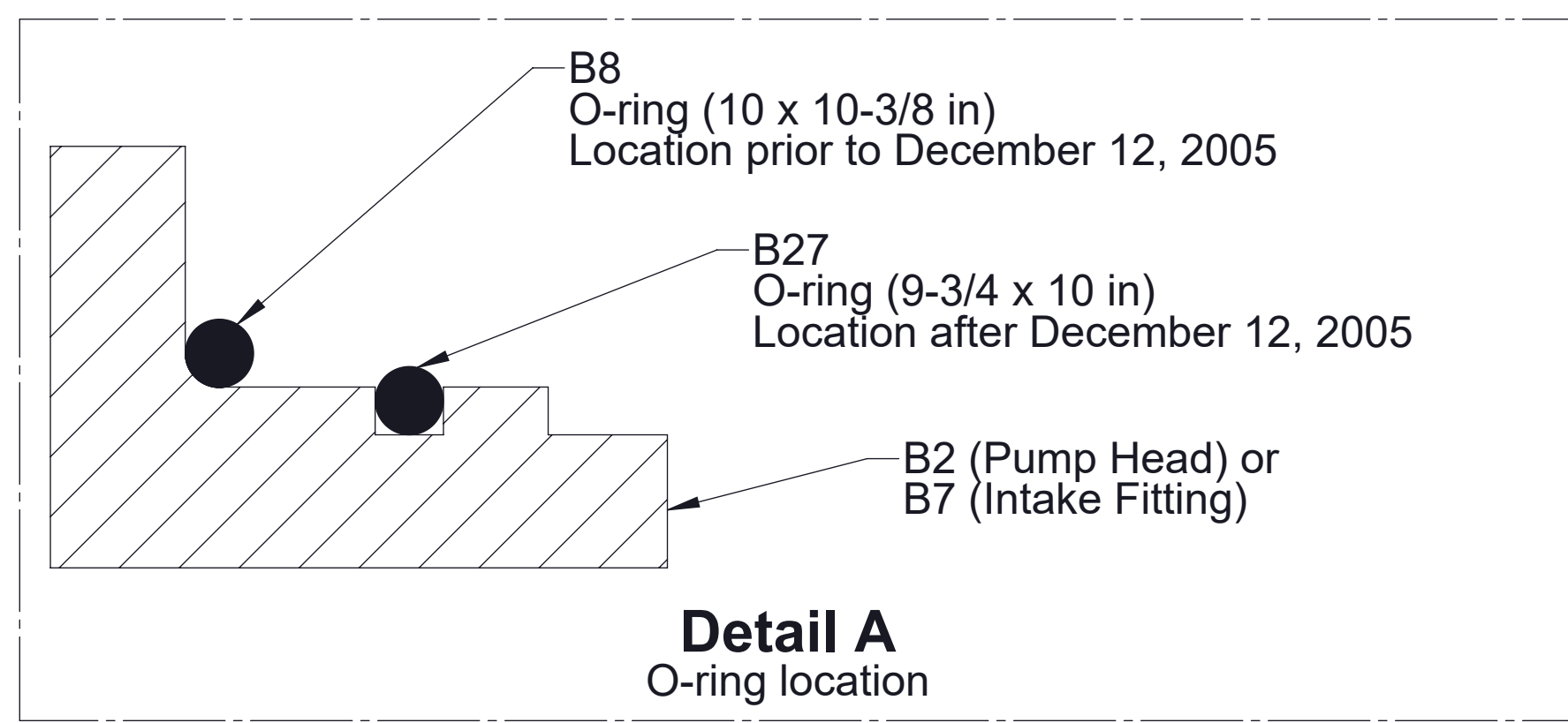


Rear View

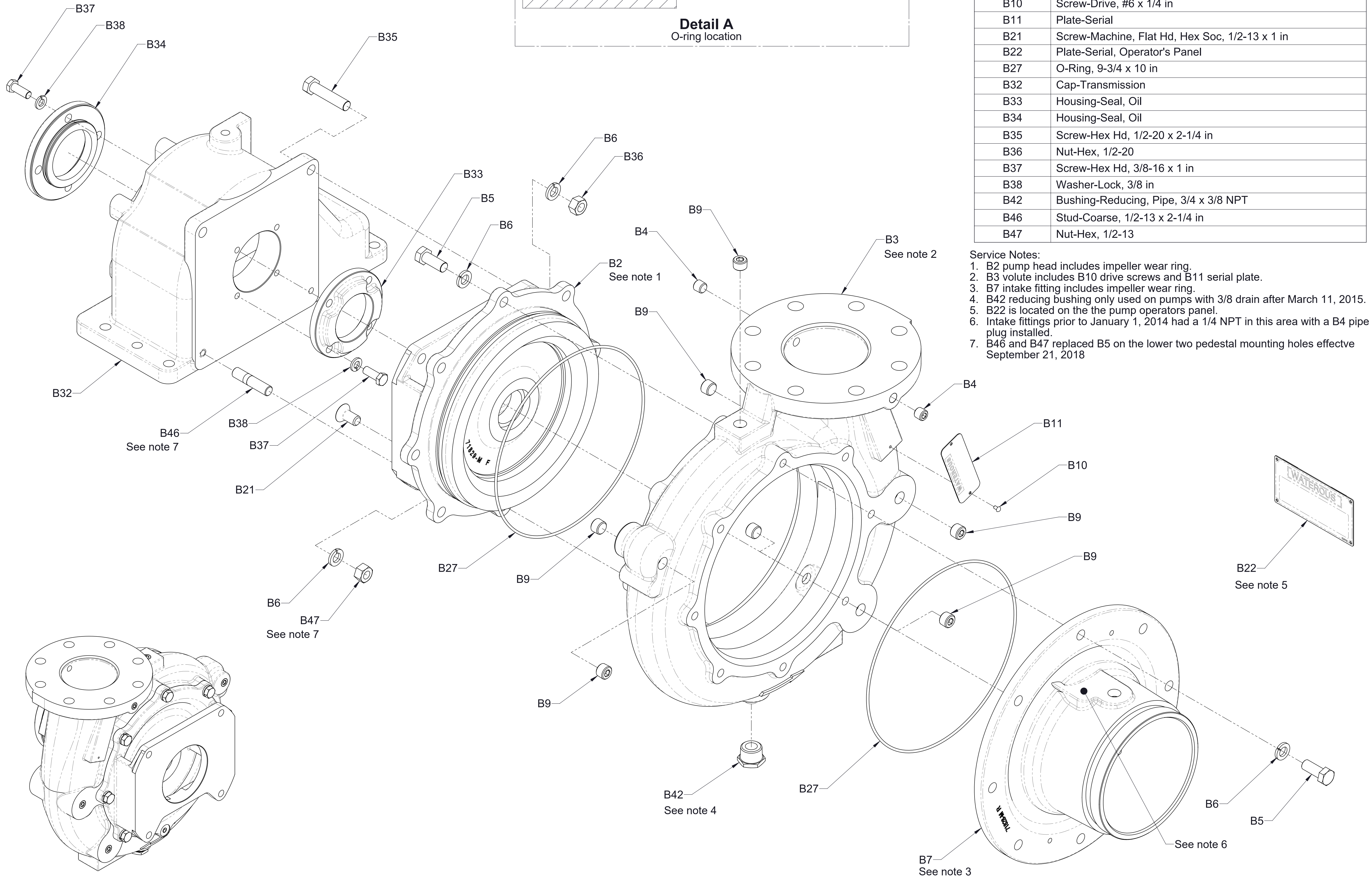


**Body and Intake Fitting (One-Piece Volute)  
D Series Transmission**





Ref No.	Description
B2	Head-Pump (Mech Seal)
B3	Body-Volute
B4	Plug-Pipe, Headless, 1/4 NPT
B5	Screw-Hex Hd, 1/2-13 x 1-1/4 in
B6	Washer-Lock, 1/2 in
B7	Fitting-Intake, 6 Victaulic, Inducer
B9	Plug-Pipe, Headless, 3/8 NPT
B10	Screw-Drive, #6 x 1/4 in
B11	Plate-Serial
B21	Screw-Machine, Flat Hd, Hex Soc, 1/2-13 x 1 in
B22	Plate-Serial, Operator's Panel
B27	O-Ring, 9-3/4 x 10 in
B32	Cap-Transmission
B33	Housing-Seal, Oil
B34	Housing-Seal, Oil
B35	Screw-Hex Hd, 1/2-20 x 2-1/4 in
B36	Nut-Hex, 1/2-20
B37	Screw-Hex Hd, 3/8-16 x 1 in
B38	Washer-Lock, 3/8 in
B42	Bushing-Reducing, Pipe, 3/4 x 3/8 NPT
B46	Stud-Coarse, 1/2-13 x 2-1/4 in
B47	Nut-Hex, 1/2-13

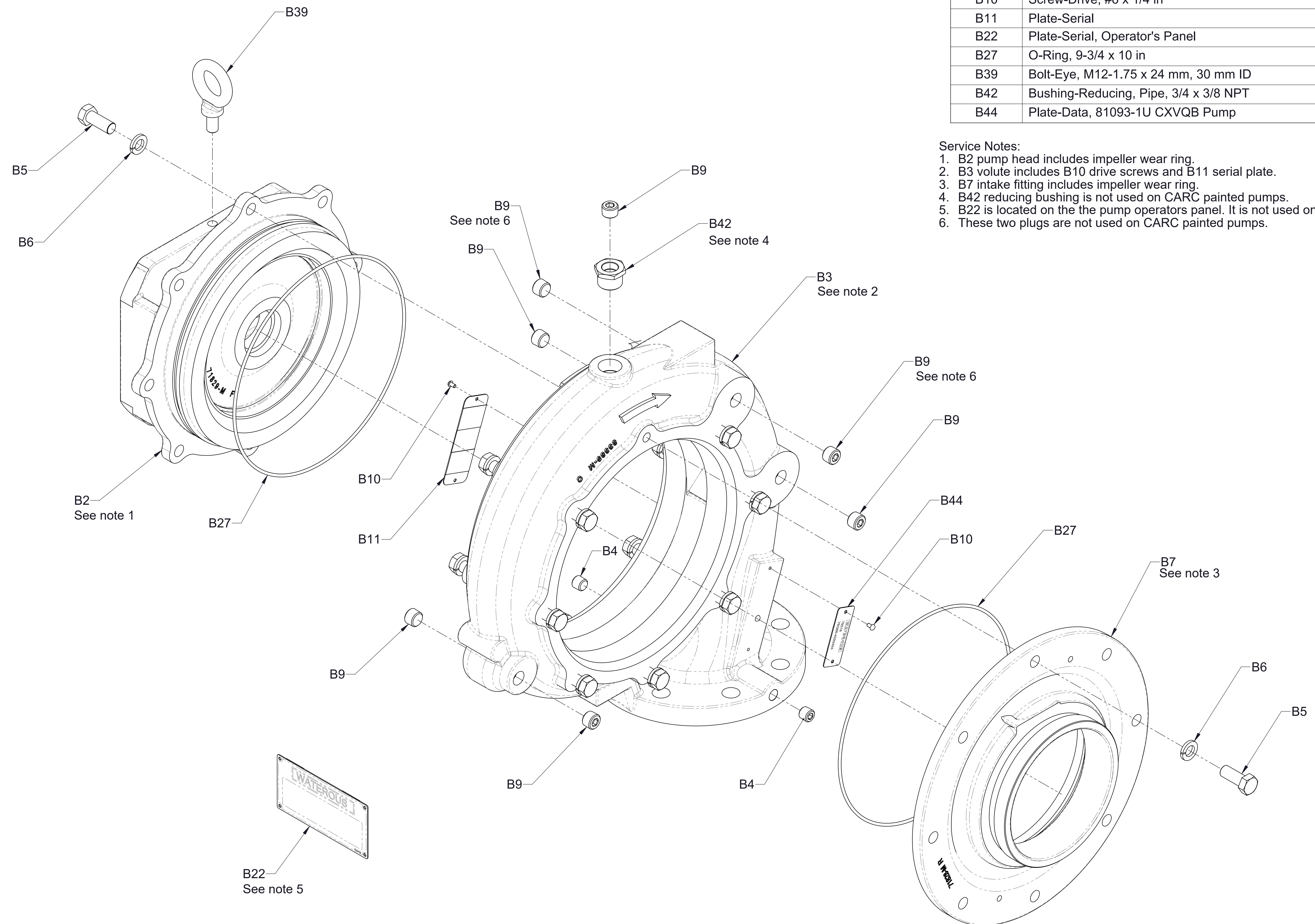


Rear View

## Body and Intake Fitting (Two-Piece Volute) D Series Transmission



Ref No.	Description
B2	Head-Pump
B3	Body-Volute
B4	Plug-Pipe, Headless, 1/4 NPT
B5	Screw-Hex Hd, 1/2-13 x 1-1/4 in
B6	Washer-Lock, 1/2 in
B7	Fitting-Intake, 6 Victaulic, Short
B9	Plug-Pipe, Headless, 3/8 NPT
B10	Screw-Drive, #6 x 1/4 in
B11	Plate-Serial
B22	Plate-Serial, Operator's Panel
B27	O-Ring, 9-3/4 x 10 in
B39	Bolt-Eye, M12-1.75 x 24 mm, 30 mm ID
B42	Bushing-Reducing, Pipe, 3/4 x 3/8 NPT
B44	Plate-Data, 81093-1U CXVQB Pump



**Service Notes:**

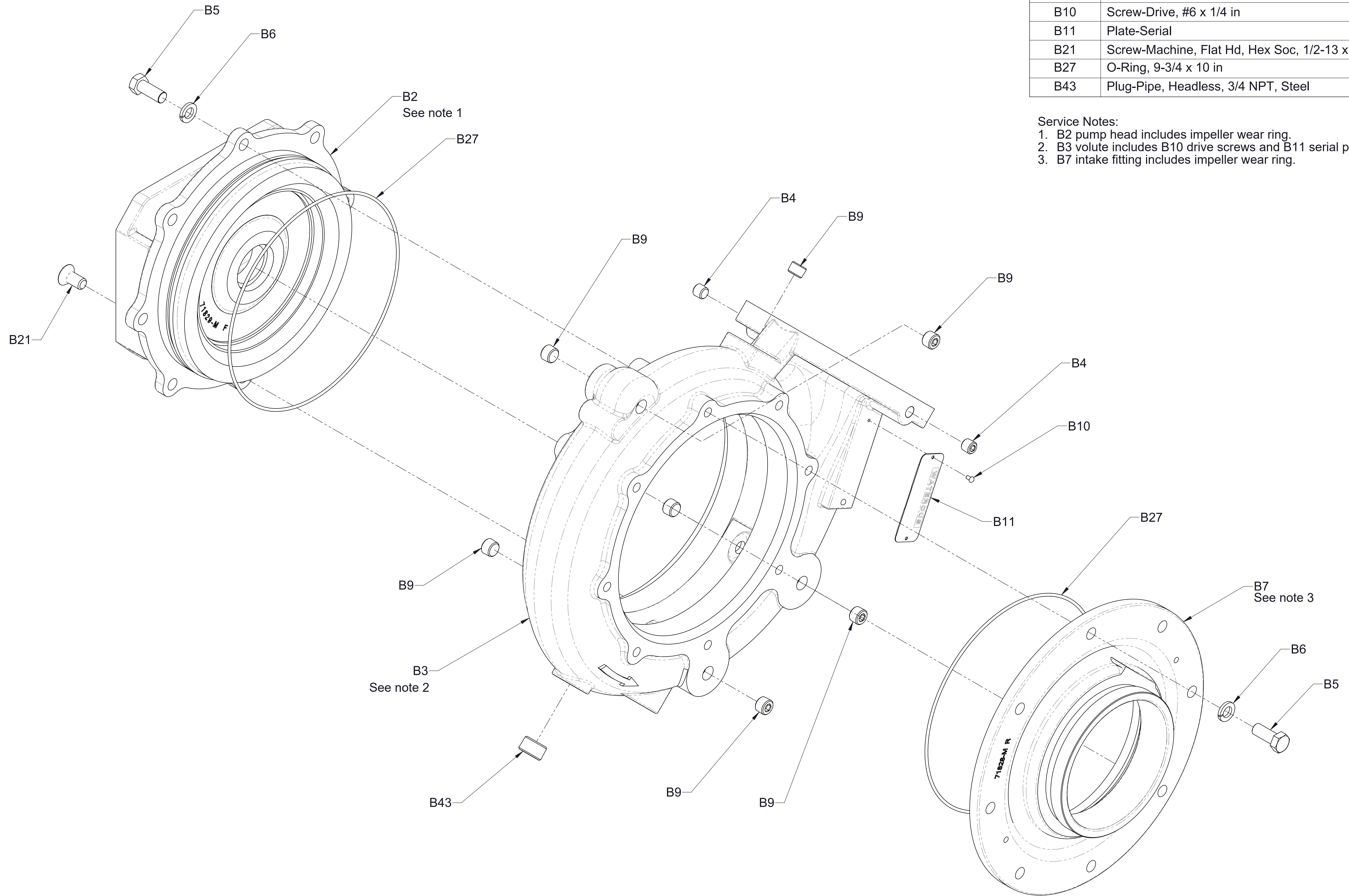
1. B2 pump head includes impeller wear ring.
2. B3 volute includes B10 drive screws and B11 serial plate.
3. B7 intake fitting includes impeller wear ring.
4. B42 reducing bushing is not used on CARC painted pumps.
5. B22 is located on the the pump operators panel. It is not used on CARC pumps.
6. These two plugs are not used on CARC painted pumps.

**Body and Intake Fitting  
QB Series Transmission  
(Rear Facing Pump)**



Ref No.	Description
B2	Head-Pump (Mech Seal) (CX)
B3	Body-Volute
B4	Plug-Pipe, Headless, 1/4 NPT
B5	Screw-Hex Hd, 1/2-13 x 1-1/4 in
B6	Washer-Lock, 1/2 in
B7	Fitting-Intake, 6 Victaulic, Short
B9	Plug-Pipe, Headless, 3/8 NPT
B10	Screw-Drive, #6 x 1/4 in
B11	Plate-Serial
B21	Screw-Machine, Flat Hd, Hex Soc, 1/2-13 x 1 in
B27	O-Ring, 9-3/4 x 10 in
B43	Plug-Pipe, Headless, 3/4 NPT, Steel

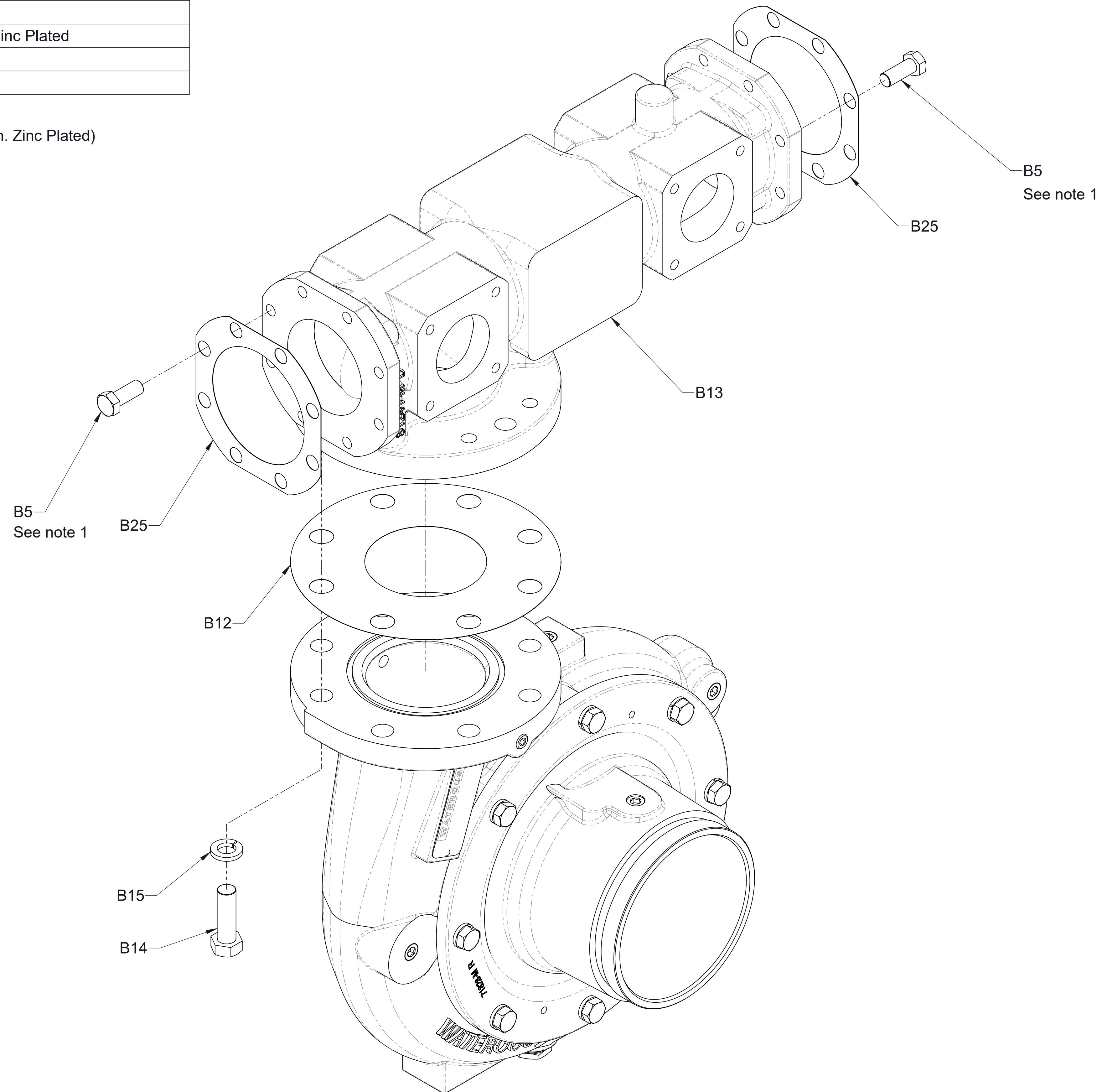
- Service Notes:
1. B2 pump head includes impeller wear ring.
  2. B3 volute includes B10 drive screws and B11 serial plate.
  3. B7 intake fitting includes impeller wear ring.



**Body and Intake Fitting  
QB Series Transmission  
(Front Facing Pump)**

Ref No.	Description
B5	Screw-Hex Hd, 1/2-13 x 1-1/4 in
B12	Gasket-Discharge Manifold (CX)
B13	Manifold-Discharge (CX)
B14	Screw-Hex Hd, 5/8-11 x 2 in, Zinc Plated
B15	Washer-Lock, 5/8 in
B25	Gasket-Flange, 3-1/2, 8-Bolt

Service Note:  
 1. B5 was B26 (Screw-Hex Hd, 1/2-13 x 1-1/4 in. Zinc Plated)



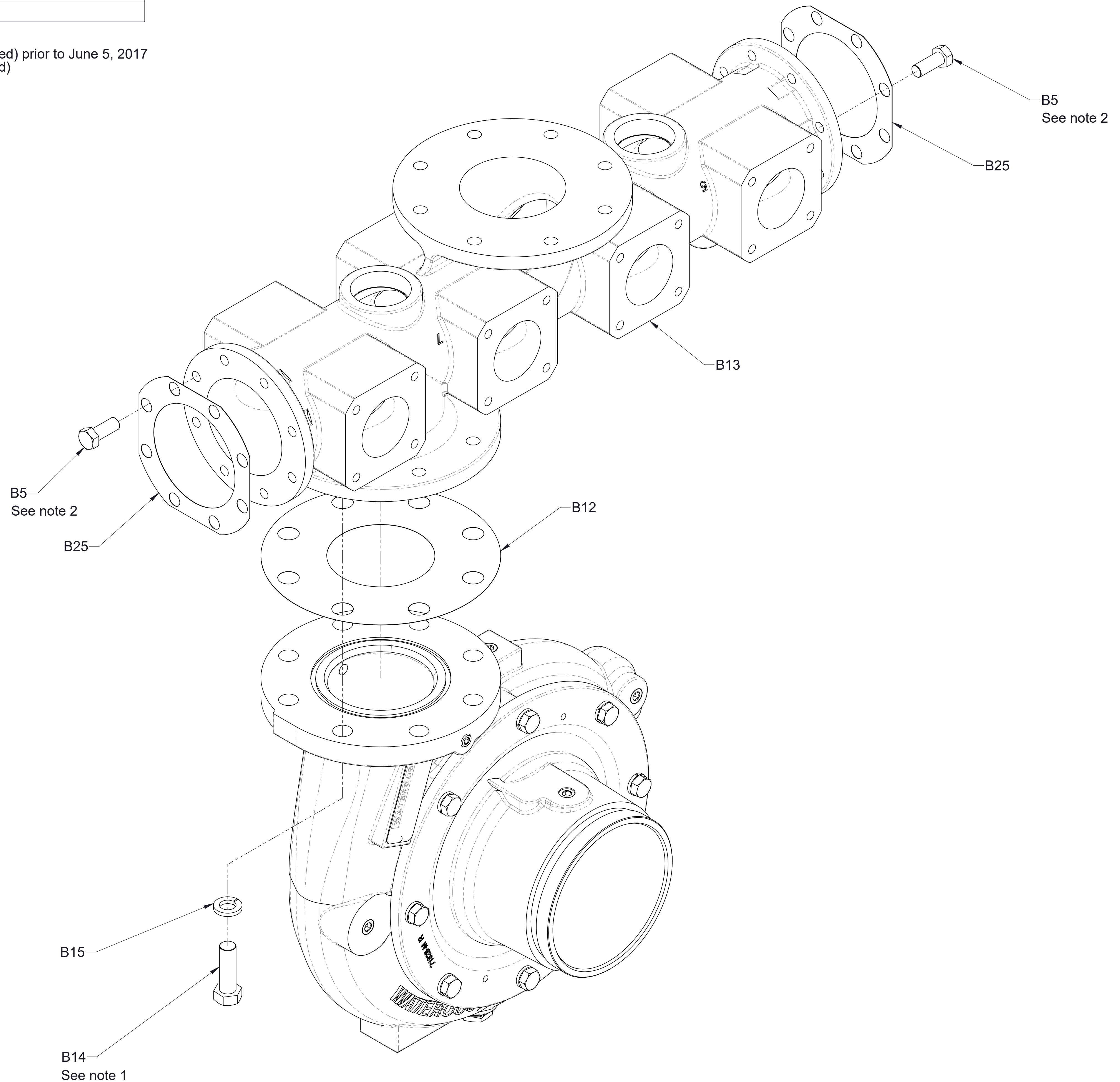
### Discharge Manifold With 3-1/2 in. End Flanges



Ref No.	Description
B5	Screw-Hex Hd, 1/2-13 x 1-1/4 in
B12	Gasket-Discharge Manifold (CX)
B13	Manifold-Discharge
B14	Screw-Hex Hd, 5/8-11 x 2 in, Zinc Plated
B15	Washer-Lock, 5/8 in
B25	Gasket-Flange, 3-1/2, 8-Bolt

Service Notes:

1. B14 was B24 (Screw-Hex Hd, 5/8-11 x 1-3/4 in, Zinc Plated) prior to June 5, 2017
2. B5 was B26 (Screw-Hex Hd, 1/2-13 x 1-1/4 in, Zinc Plated)



**Discharge Manifold  
With 4 in. End Flanges**