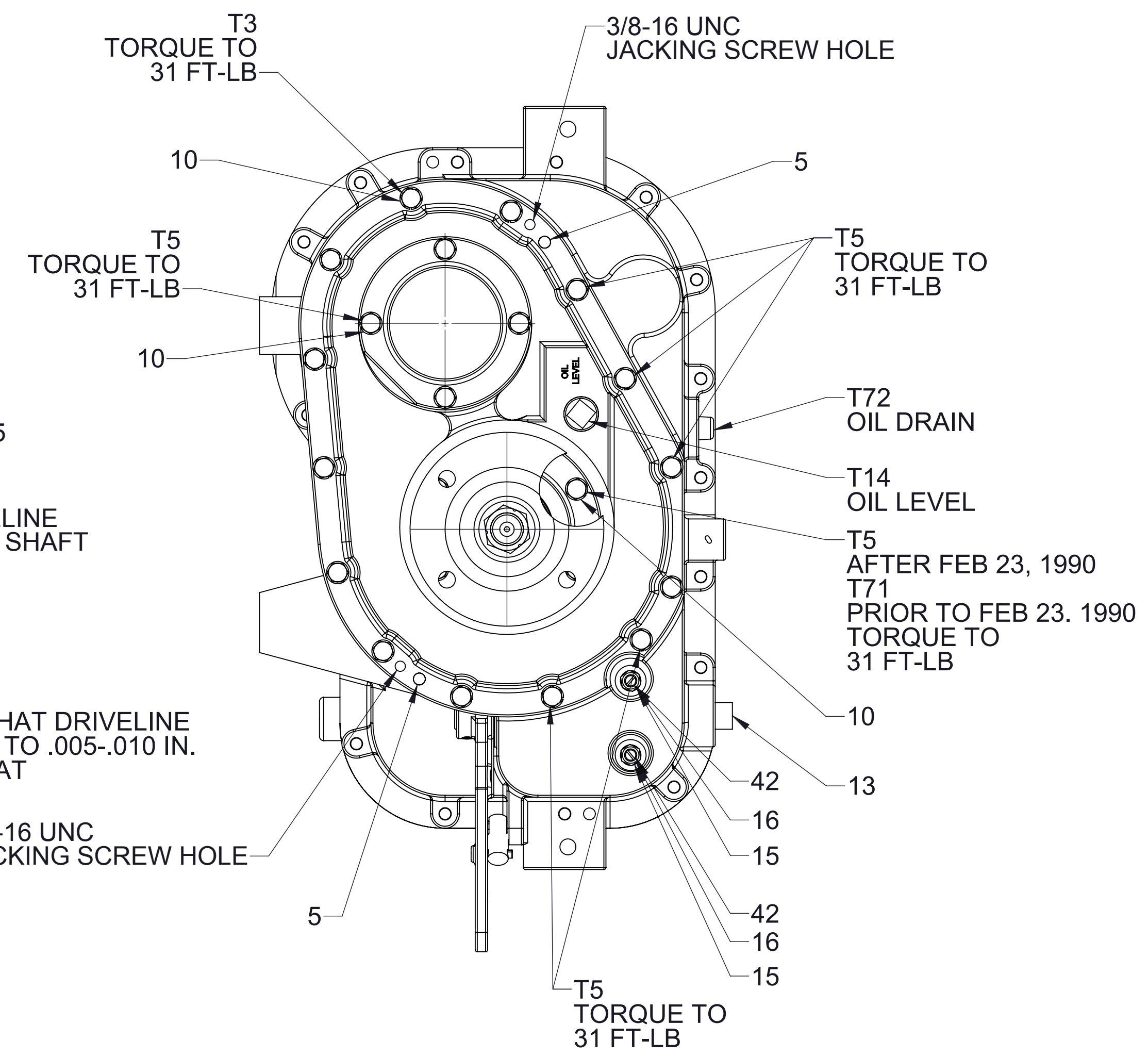
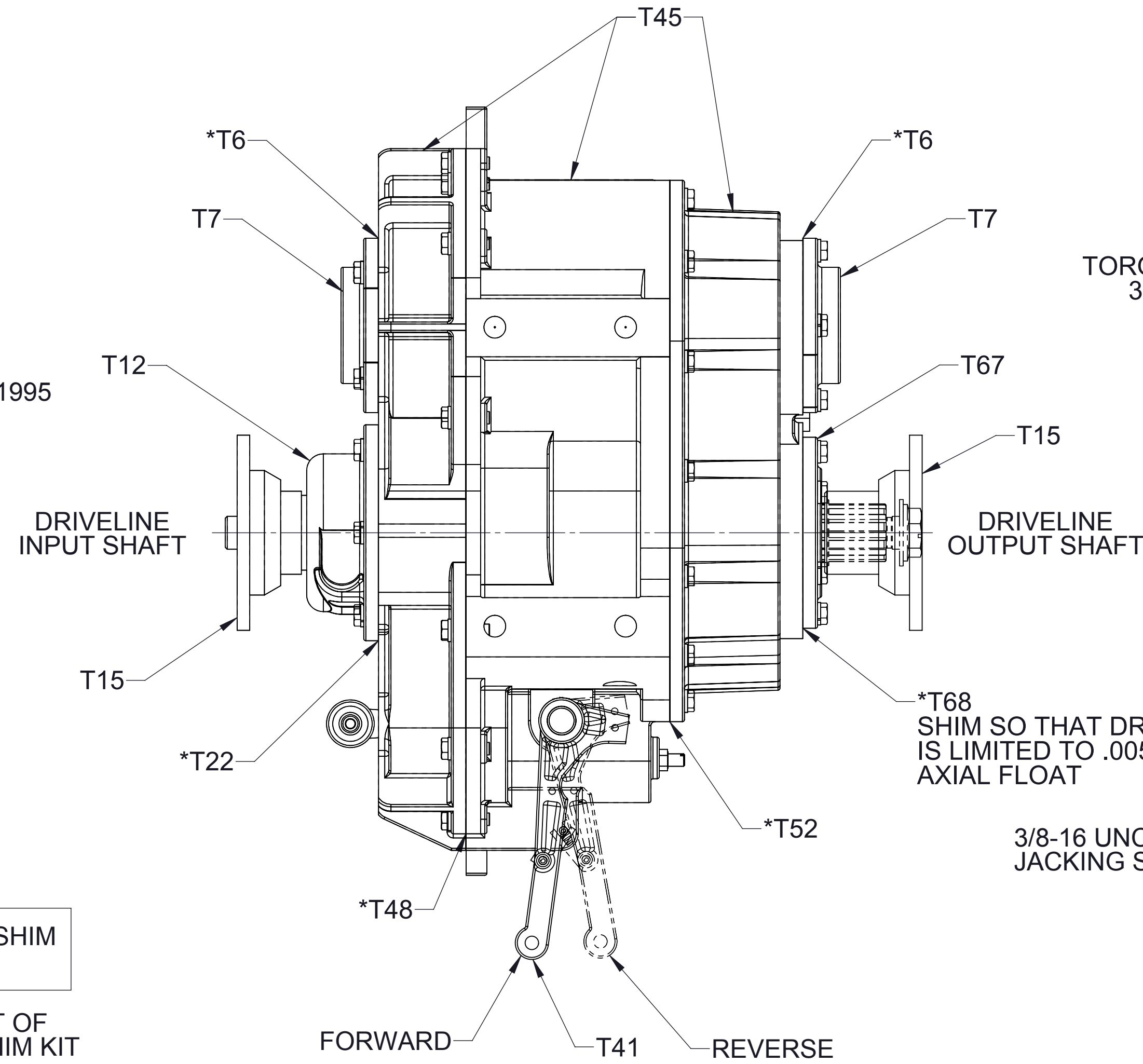
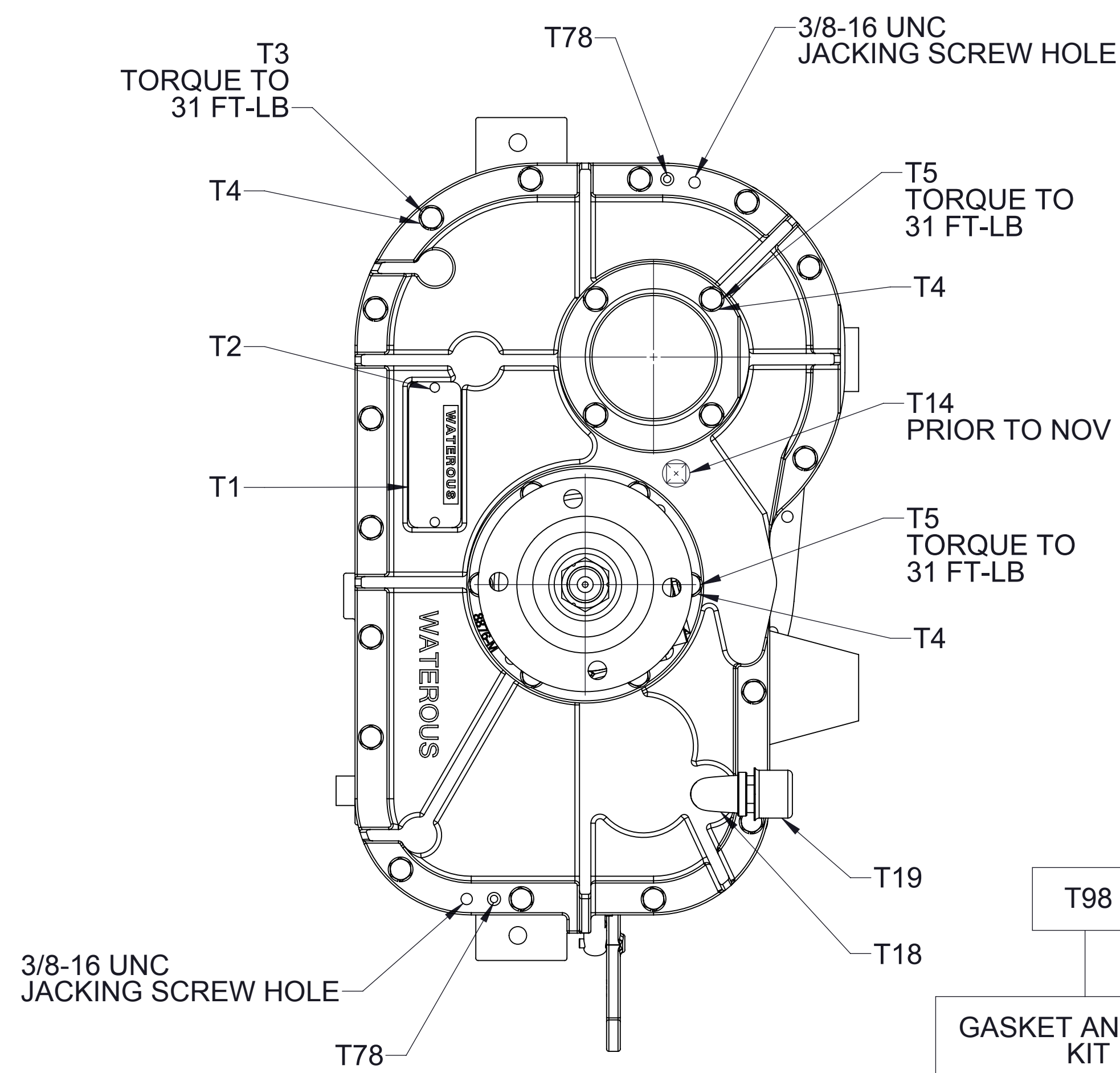


TMR Reversing Transmission Service Parts List

| Component | | See Page |
|--------------------|------------|----------|
| Case | | 2 |
| Driveline | 1-3/4 Inch | 3 |
| | 2 Inch | 4 |
| Shift Mechanism | | 5 |
| Optional Lube Pump | | 6 |

| REF NO. | DESCRIPTION | REF NO. | DESCRIPTION |
|---------|--|---------|---|
| T1 | Plate-Serial | T41 | Arm-Shift |
| T2 | Screw-Drive, #6 x 1/4 in | T45 | Gear Case Assembly (Three Pieces) |
| T3 | Screw-Hex Hd, 3/8-16 X 1-1/4, Heat Treated | *T48 | Gasket-Gear Case |
| T4 | Washer-Lock, 3/8 in | *T52 | Gasket-Cover, Gear Case |
| T5 | Screw-Hex Head, 3/8-16 x 1-1/4 in, Heat Treated with Thread Seal | T67 | Housing-Oil Seal |
| *T6 | Gasket-Bearing Cover | *T68 | Coupling Shaft Housing Shim Pack Includes (Shim .005, .007, and .010) |
| T7 | Cover-Bearing | T69 | Screw-Adjusting |
| T12 | Housing-Drive Shaft | T70 | Nut-Hex, 3/8-24 |
| T14 | Plug-Pipe, Square Hd, 3/4 NPT | T71 | Screw-Hex Head, 3/8-16 x 1-1/8 in |
| T15 | Flange-Companion, 1480/1550 Series (1-3/4-10 Spline) | T72 | Plug-Drain, Magnetic, 3/4 in |
| T18 | Elbow-Street, 90°, 1/2 NPT | T78 | Pin-Dowel, 3/8 x 1 in |
| T19 | Breather, 1/2 NPT | T79 | Pin-Dowel, 3/8 x 1-1/4 in |
| *T22 | Drive Shaft Housing Gasket | T95 | Washer-Flat, 3/8 in |
| T32 | Plug-Pipe, Square Hd, 1 NPT | T98 | Gasket and Shim Kit (Includes T6, T22, T28, T37, T48, T52, T63, T68) |

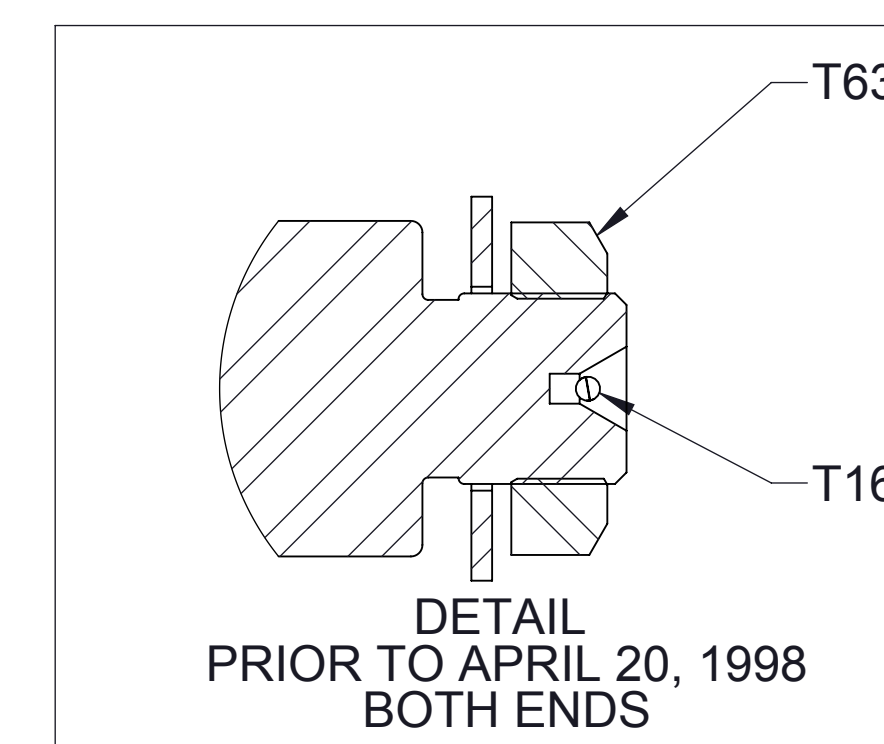
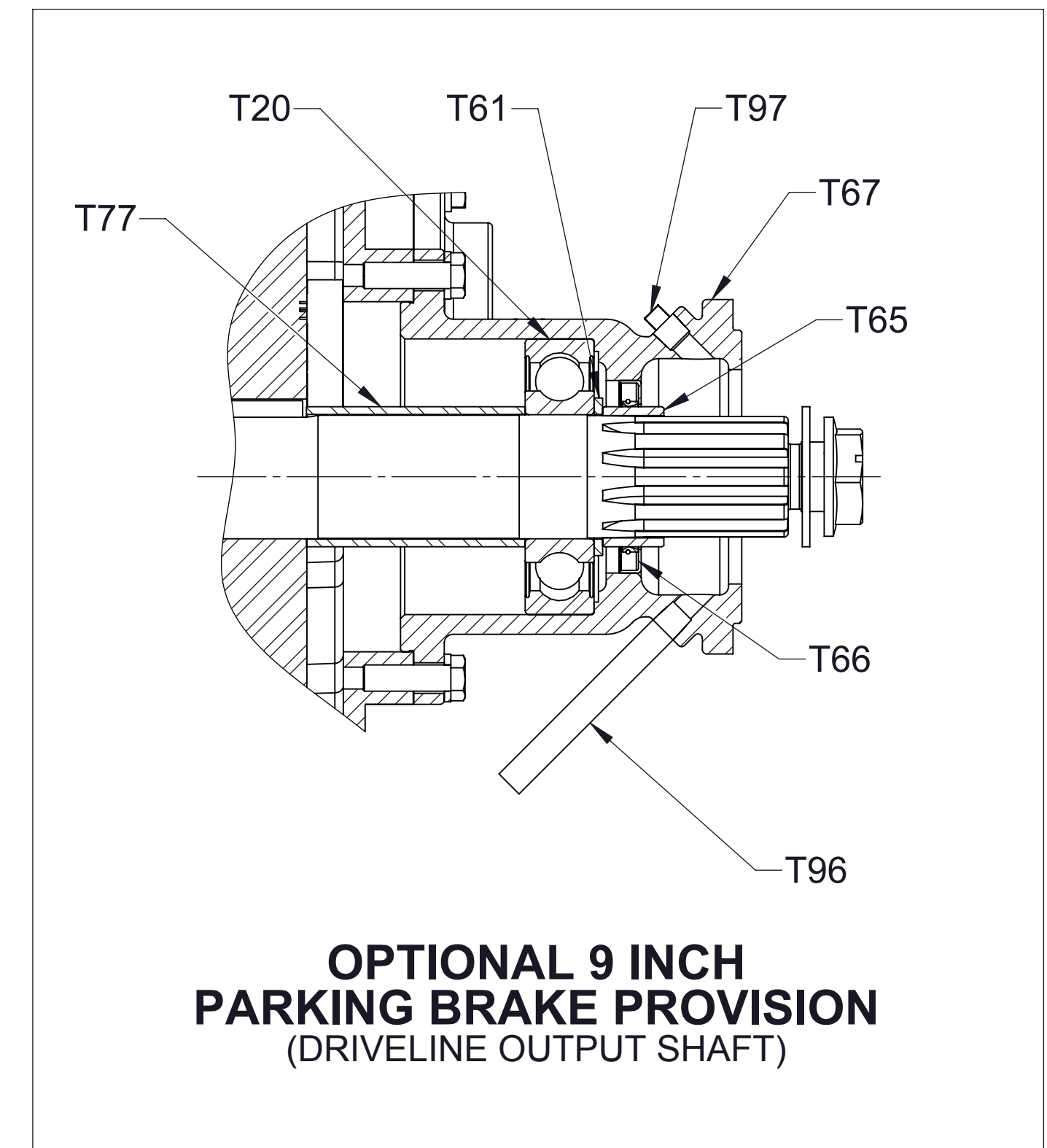
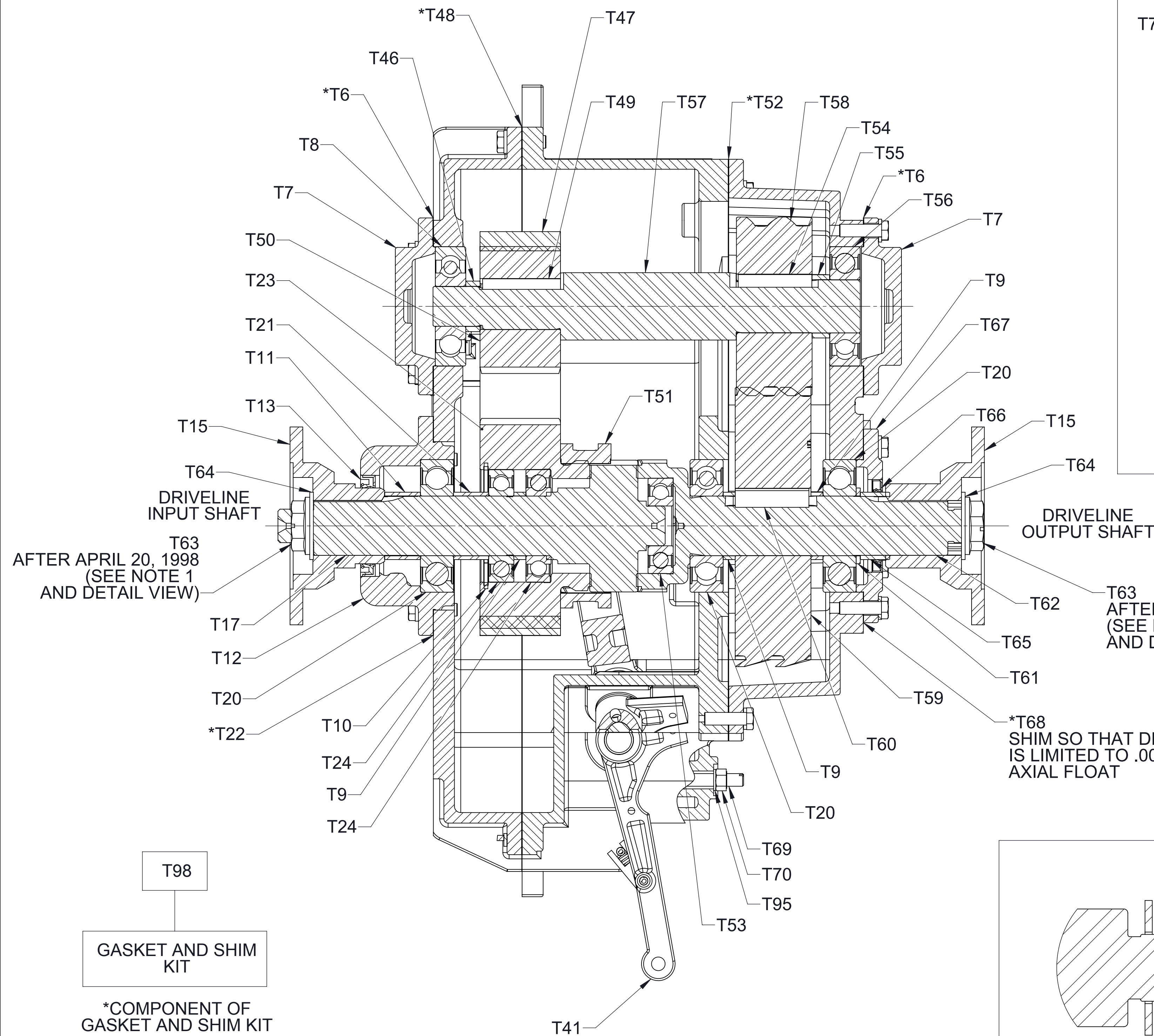


T98
GASKET AND SHIM KIT
*COMPONENT OF GASKET AND SHIM KIT

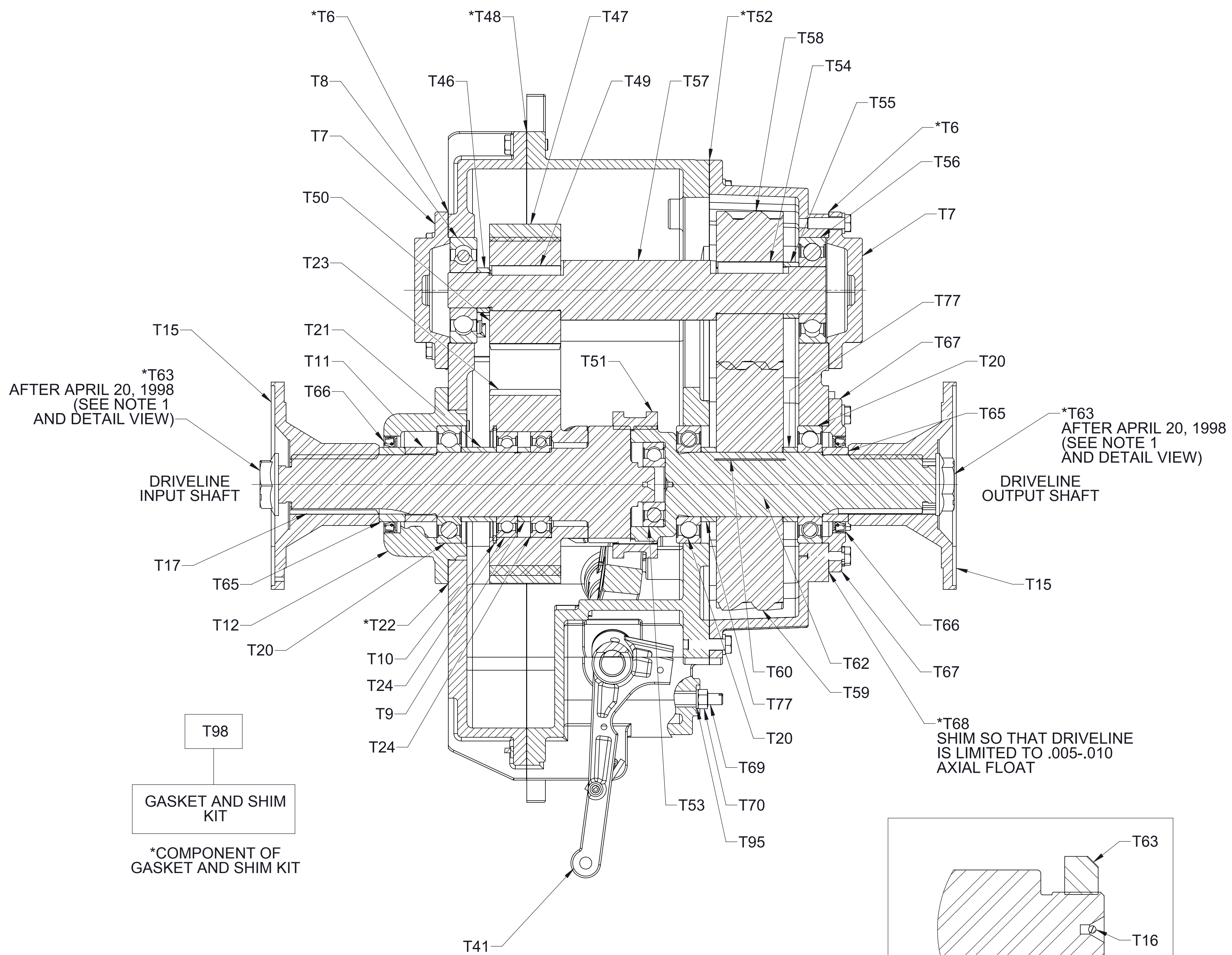
CASE

| REF NO. | DESCRIPTION |
|---------|---|
| *T6 | Gasket-Bearing Cover |
| T7 | Cover-Bearing |
| T8 | Bearing, Ball, Single Row, 30 x 90 x 23 mm |
| T9 | Spacer-Drive Shaft |
| T10 | Ring-Retaining, Internal, 3.346 in Bore Dia |
| T11 | Spacer-Bearing, Drive Shaft |
| T12 | Housing-Drive Shaft |
| T13 | Seal-Oil |
| T15 | Flange-Companion, 1480/1550 Series (1-3/4-10 Spline) |
| T16 | Cotter Pin, 1/8 x 1-3/4 in |
| T17 | Shaft-Drive, 1-3/4-10 Spline |
| T20 | Bearing, Ball, Single Row, 45 x 100 x 25 mm |
| T21 | Spacer-Bearing |
| *T22 | Shim (.007) |
| T23 | Sprocket-Drive, 41T |
| T24 | Bearing, Ball, Single Row, 45 x 85 x 19 mm |
| T41 | Arm-Shift |
| T46 | Spacer |
| T47 | Chain and Pin Set |
| *T48 | Gasket-Gear Case |
| T49 | Key-Square, 5/16 x 2-5/16 in |
| T50 | Sprocket-Driven, 26T |
| T51 | Shift Collar |
| *T52 | Gasket-Cover, Gear Case |
| T53 | Bearing, Ball, Single Row, 30 x 72 x 19 mm |
| T54 | Key-Square, 3/8 x 2-3/16 in |
| T55 | Spacer |
| T56 | Bearing, Ball, Single Row, 40 x 90 x 23 mm |
| T57 | Shaft-Driven |
| T58 | Gear-Driven, 38T |
| T59 | Gear-Drive, 60T |
| T60 | Key-Square, 1/2 x 2-3/16 in |
| T61 | Spacer |
| T62 | Shaft-Coupling, 1-3/4-10 Spline |
| T63 | Nut-Self Locking, 1-20 UNEF-2B |
| T64 | Washer-Plain, 1 in |
| T65 | Sleeve-Seal, Oil |
| T66 | Seal-Oil, 2 x 2-3/4 in |
| T67 | Housing-Oil Seal |
| *T68 | Coupling Shaft Housing Shim Pack Includes (Shim .005, .007, and .010) |
| T69 | Screw-Adjusting |
| T70 | Nut-Hex, 3/8-24 |
| T95 | Washer-Flat, 3/8 in |
| T98 | Gasket and Shim Kit (Includes T6, T22, T28, T37, T48, T52, T63, T68) |

| REF NO. | DESCRIPTION |
|---------|---|
| T20 | Bearing, Ball, Single Row, 45 x 100 x 25 mm |
| T61 | Spacer |
| T65 | Sleeve-Seal, Oil |
| T66 | Seal-Oil, 2 x 2-3/4 in |
| T67 | Housing-Coupling Shaft |
| T77 | Spacer-Shaft, Coupling |
| T96 | Pipe-Drain |
| T97 | Plug-Pipe, Square Hd, 1/8 NPT |



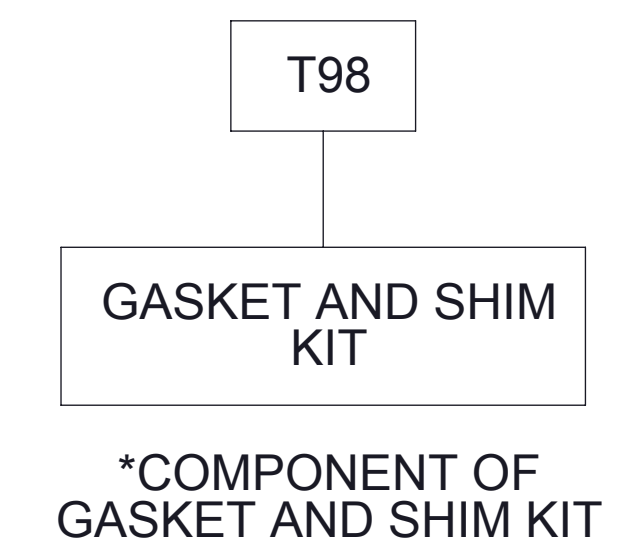
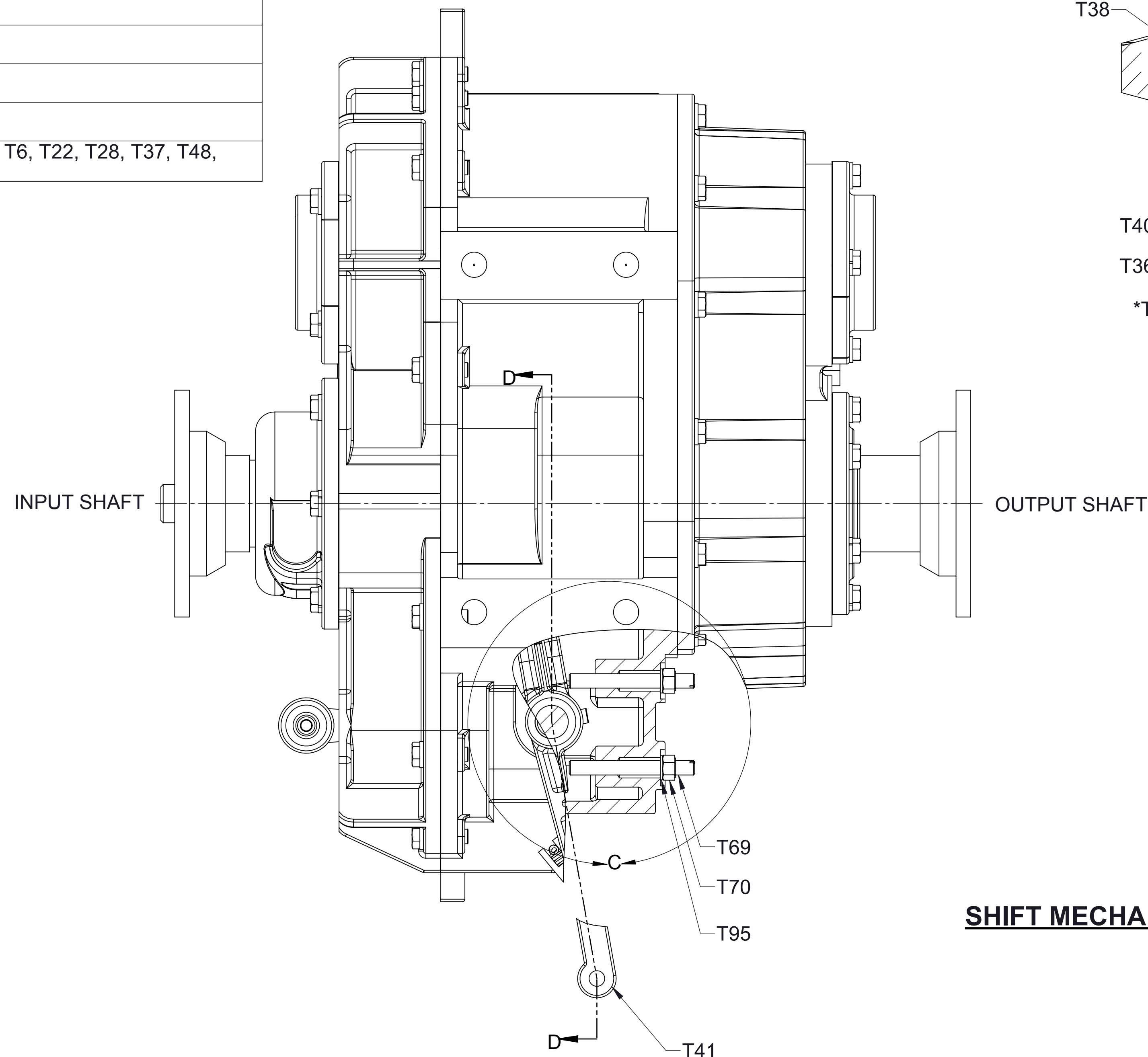
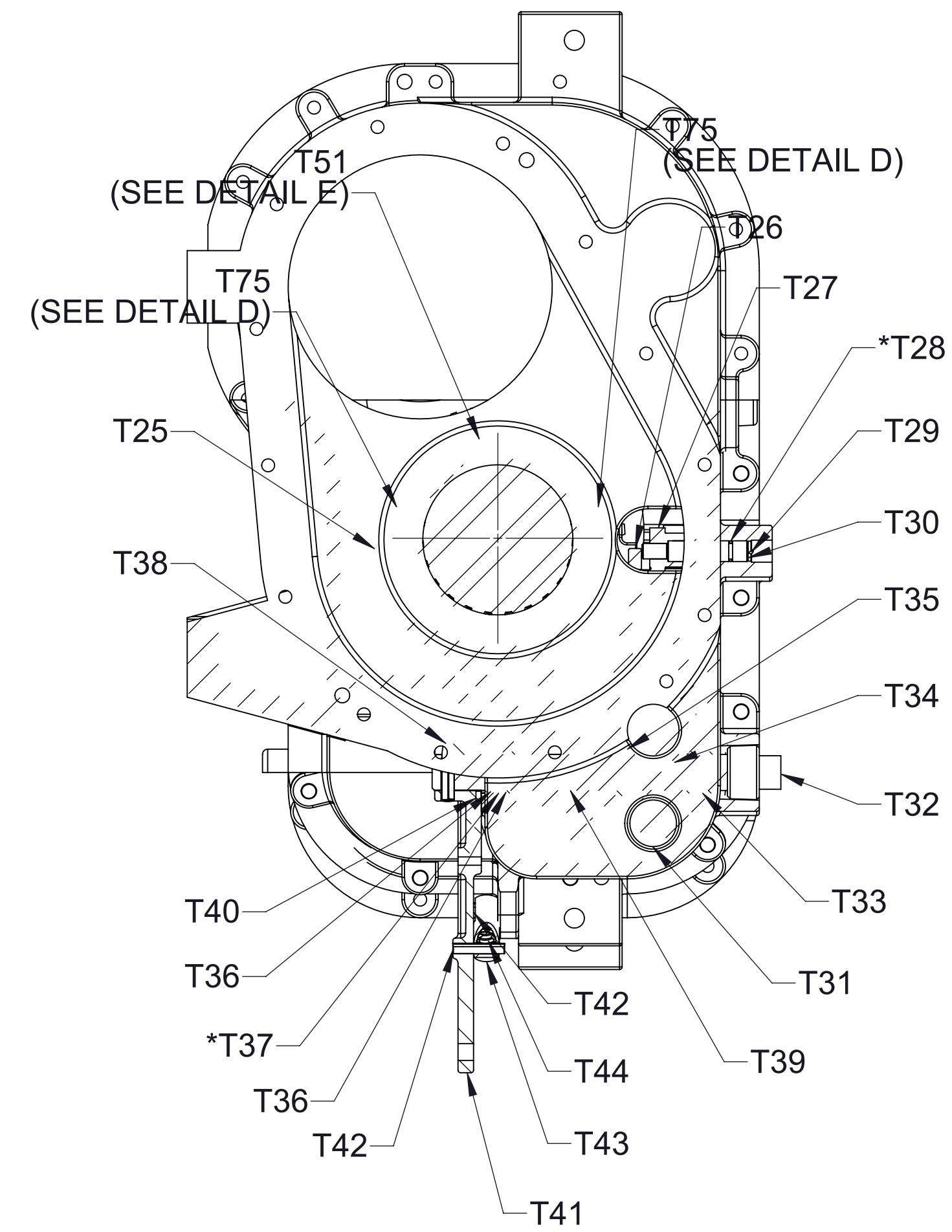
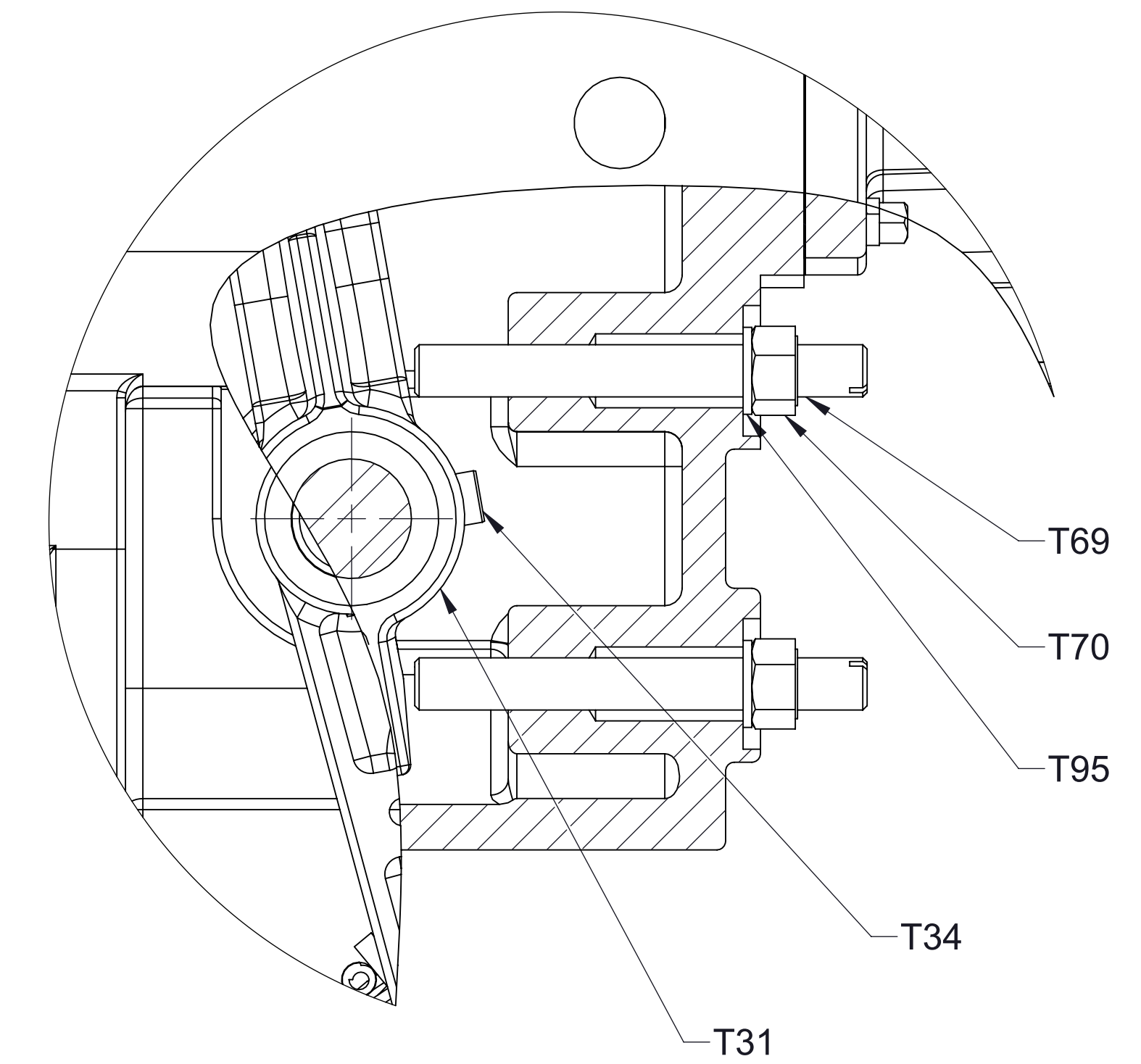
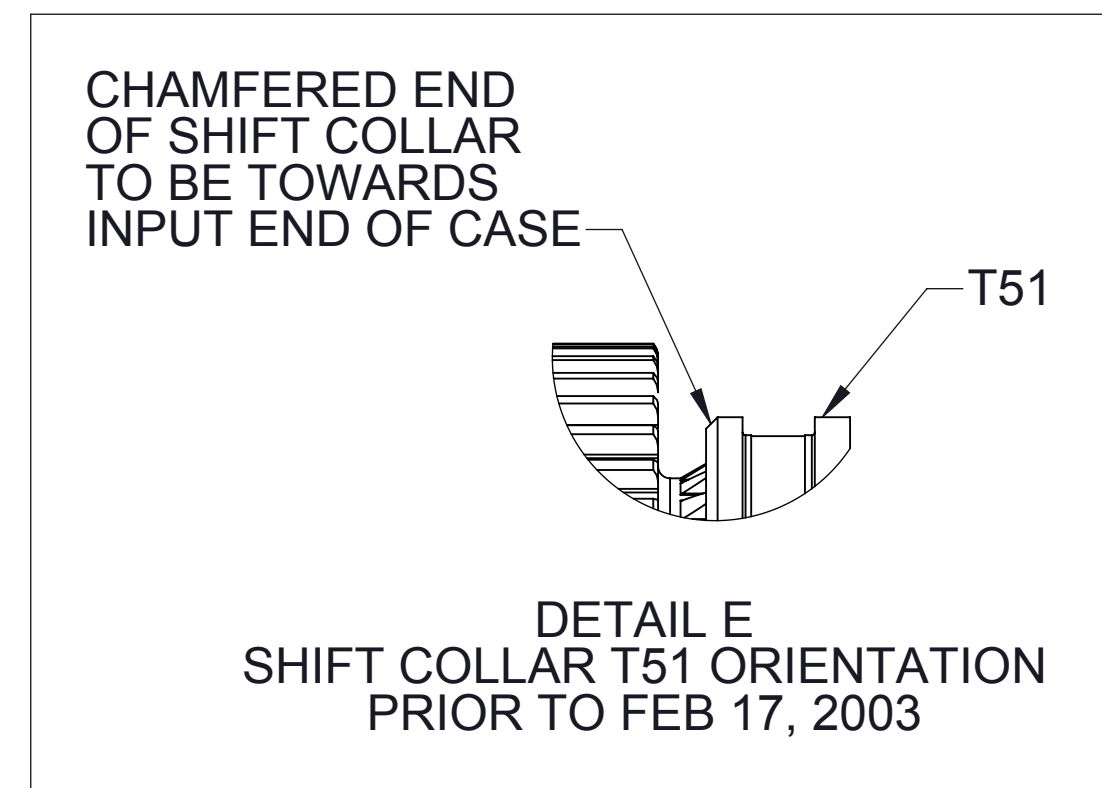
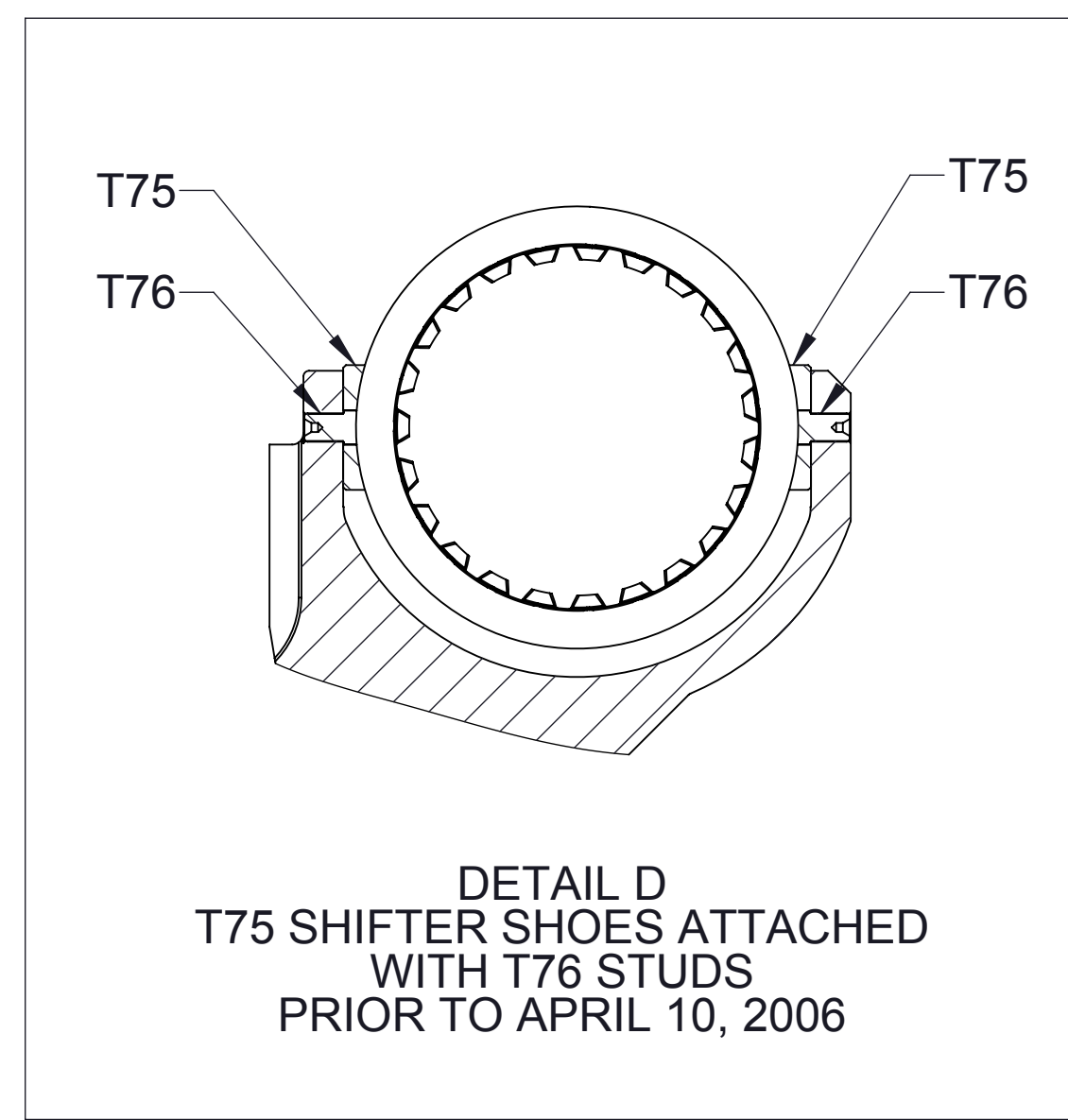
NOTE:
1. TORQUE SELF LOCKING NUT TO 400-450 LB-FT.



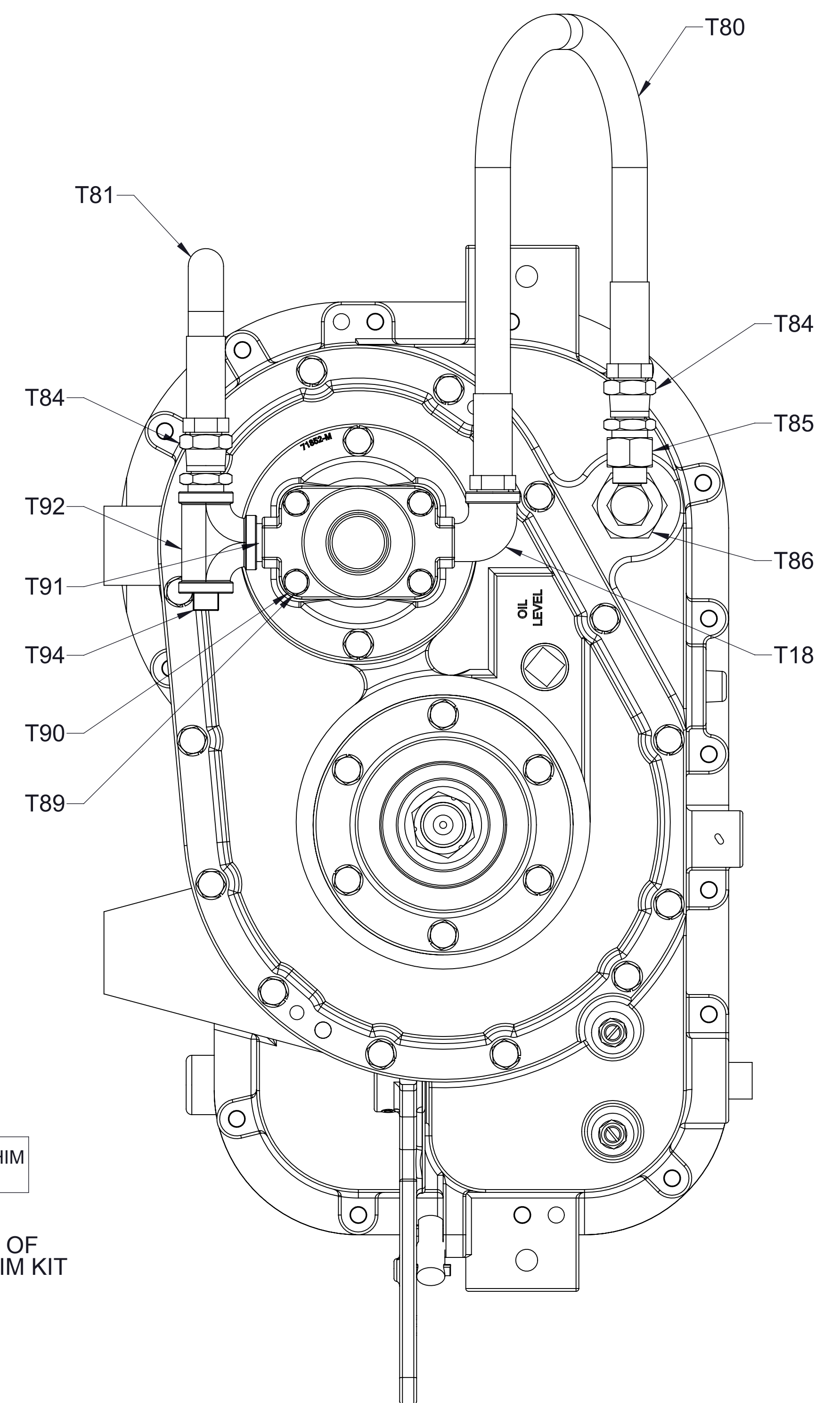
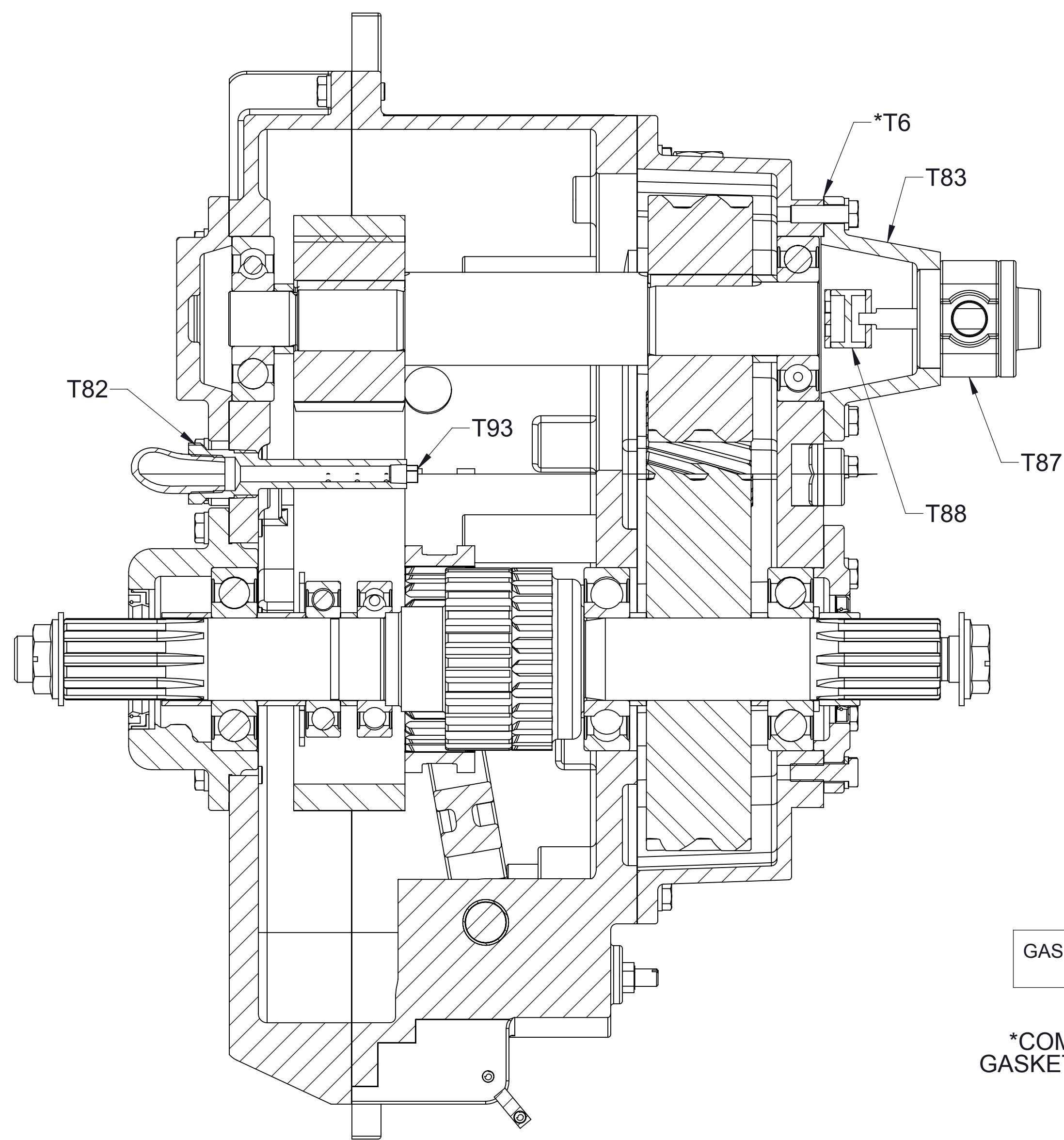
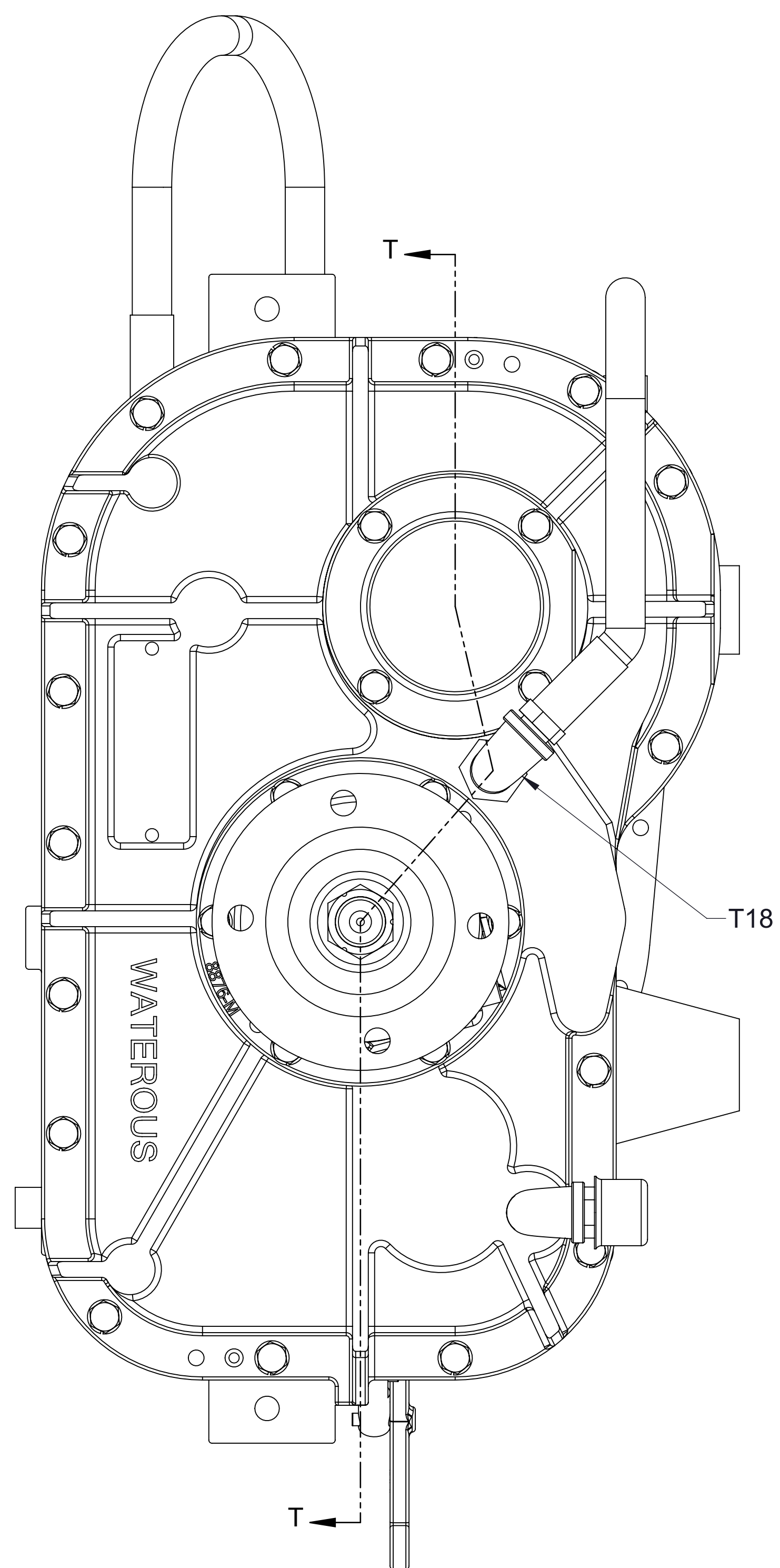
| REF NO. | DESCRIPTION |
|---------|---|
| *T6 | Gasket-Bearing Cover |
| T7 | Cover-Bearing |
| T8 | Bearing, Ball, Single Row, 30 x 90 x 23 mm |
| T9 | Spacer-Drive Shaft |
| T10 | Ring-Retaining, Internal, 3-9/16 in Bore Dia |
| T11 | Spacer-Drive Shaft |
| T12 | Housing-Drive Shaft |
| T15 | Flange-Companion |
| T16 | Cotter Pin, 1/8 x 1-3/4 in |
| T17 | Shaft-Drive, 2-10 Spline |
| T20 | Bearing, Ball, Single Row, 55 x 100 x 21 mm |
| T21 | Spacer-Drive Shaft |
| *T22 | Shim (.007) |
| T23 | Sprocket-Drive, 41T |
| T24 | Bearing, Ball, Single Row, 55 x 90 x 18 mm |
| T41 | Arm-Shift |
| T46 | Spacer |
| T47 | Chain and Pin Set |
| *T48 | Gasket-Gear Case |
| T49 | Key-Square, 5/16 x 2-5/16 in |
| T50 | Sprocket-Driven, 26T |
| T51 | Collar-Shift |
| *T52 | Gasket-Cover, Gear Case |
| T53 | Bearing, Ball, Single Row, 30 x 72 x 19 mm |
| T54 | Key-Square, 3/8 x 2-3/16 in |
| T55 | Spacer |
| T56 | Bearing, Ball, Single Row, 40 x 90 x 23 mm |
| T57 | Shaft-Driven |
| T58 | Gear-Driven, 38T |
| T59 | Gear-Drive, 60T |
| T60 | Key-Square, 1/2 x 2-3/16 in |
| T62 | Shaft-Coupling, 2-10 Spline |
| *T63 | Nut-Self Locking, 1-1/4-18 UNEF-2B |
| T65 | Sleeve-Oil Seal |
| T66 | Seal-Oil, 2-1/2 x 3-1/4 in |
| T67 | Housing-Oil Seal |
| *T68 | Coupling Shaft Housing Shim Pack Includes (Shim .005, .007, and .010) |
| T69 | Screw-Adjusting |
| T70 | Nut-Hex, 3/8-24 |
| T77 | Spacer-Shaft, Coupling |
| T95 | Washer-Flat, 3/8 in |
| T98 | Gasket and Shim Kit (Includes T6, T22, T28, T37, T48, T52, T63, T68) |

NOTE:
1. TORQUE SELF LOCKING NUT TO 475-525 LB-FT.

| REF NO. | DESCRIPTION |
|---------|--|
| T25 | Shift Fork |
| T26 | Shoe-Shift |
| T27 | Locking-Arm |
| *T28 | O-Ring, 3/8 x 1/2 in |
| T29 | Pin-Cotter, 1/8 x 5/8 in |
| T30 | Pin-Pivot |
| T31 | Sector-Gear |
| T32 | Plug-Pipe, Square Hd, 1 NPT |
| T33 | Bearing-Sleeve, Self-Lubricating |
| T34 | Pin-Spirol, 3/8 x 1-3/4 in |
| T35 | Spacer |
| T36 | Bushing-Shaft |
| *T37 | O-Ring, 7/8 x 1 in |
| T38 | Pin-Spirol, 5/16 x 1-3/8 in |
| T39 | Shaft-Shift |
| T40 | Spacer |
| T41 | Arm-Shift |
| T42 | Pin-Spirol, 1/4 x 1-1/4 in |
| T43 | Housing-Spring |
| T44 | Spring-Lock, Shift |
| T51 | Collar-Shift |
| T69 | Screw-Adjusting |
| T70 | Nut-Hex, 3/8-24 |
| T75 | Shoe-Shift |
| T76 | Shifter Shoe Stud |
| T95 | Washer-Flat, 3/8 in |
| T98 | Gasket and Shim Kit (Includes T6, T22, T28, T37, T48, T52, T63, T68) |



| REF NO. | DESCRIPTION |
|---------|--|
| *T6 | Gasket-Bearing Cover |
| T18 | Elbow-Street, 90°, 1/2 NPT |
| T80 | Hose Assembly, 1/2 NPT x 15 in |
| T81 | Hose Assembly, 1/2 NPT x 22 In |
| T82 | Tube-Oil Spray |
| T83 | Housing-Pump |
| T84 | Union, Adapter, 1/2 Inch |
| T85 | Adapter-Union, 90° |
| T86 | Strainer - Oil |
| T87 | Pump-Lube |
| T88 | Coupling |
| T89 | Screw-Hex Hd, 5/16-18 x 2 in |
| T90 | Washer-Lock, 5/16 in, Zinc Plated |
| T91 | Nipple-Pipe, 1/2 NPT x 1-1/8 in, Steel |
| T92 | Tee-Standard, Pipe, 1/2 NPT, Iron |
| T93 | Plug-Pipe, Square Hd, 1/8 NPT |
| T94 | Plug-Pipe, Square Hd, 1/2 NPT, Steel |
| T98 | Gasket and Shim Kit (Includes T6, T22, T28, T37, T48, T52, T63, T68) |



T98
GASKET AND SHIM
KIT

*COMPONENT OF
GASKET AND SHIM
KIT

OPTIONAL LUBE PUMP