



Document Number	Issue Date	Rev. Date
<b>SPL81748</b>	<b>12/17/90</b>	<b>10/4/21</b>

## CP-3 Pump Body Service Parts List

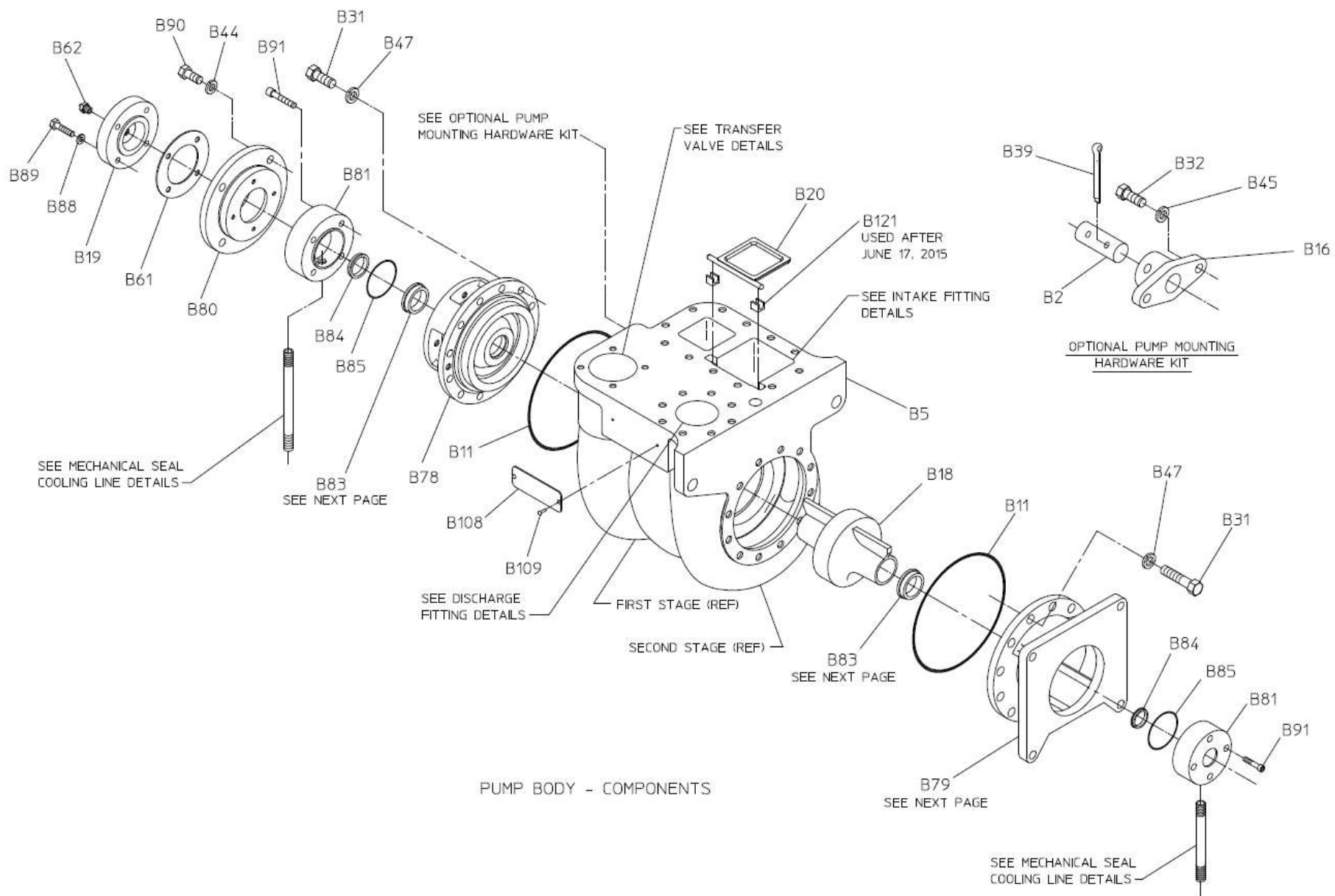
### Index:

Component		See Pages
Pump Body	Components	2, 3
	Head Bushing Installation	4, 5
Transfer Valve	Components	6, 7
	Panel Plates	8, 9
Mechanical Seal Cooling Lines	Pumps Built After March 15, 1995	10, 11
	Pumps Built Prior to March 15, 1995	12, 13
Intake and Discharge Fittings		14, 15

## Pump Body - Components

REF NO.	DESCRIPTION
B2	Suspension pin, 1 x 2-5/8 in.
B5	Volute body subassembly
B11	O-ring, 6-1/4 x 6-7/16 in.
B16	Suspension bracket
B18	Interstage seal
B19	Bearing housing cover
B20	Flap valve
B31	Hex hd screw, 7/16-14 x 1 in., steel or stainless steel
B32	Hex hd screw, 7/16-14 x 1-1/4 in.
B39	Cotter pin, 5/16 x 2-1/2 in.
B44	Lock washer, 3/8 in.
B45	Lock washer, 7/16 in.
B47	Flat washer, copper, 7/16 in.
B61	Bearing cover gasket
B62	Lubrication fitting, 1/8 in.
B78	Outboard head subassembly
B79	Inboard head subassembly
B80	Bearing housing
B81	Mechanical seal housing

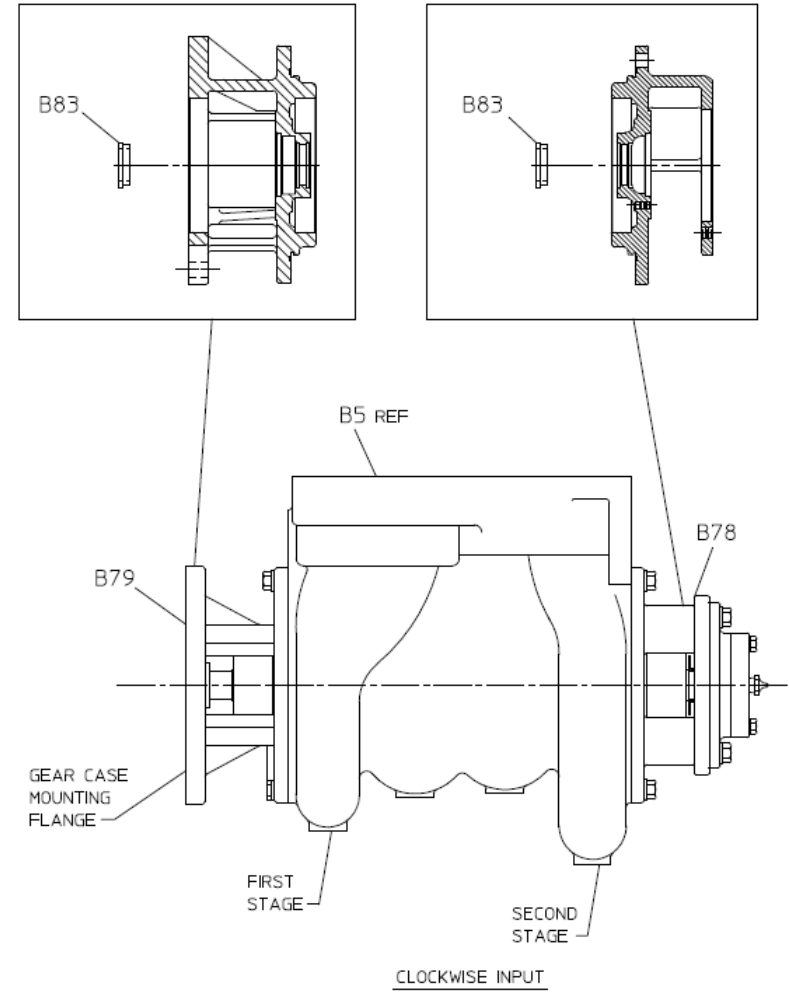
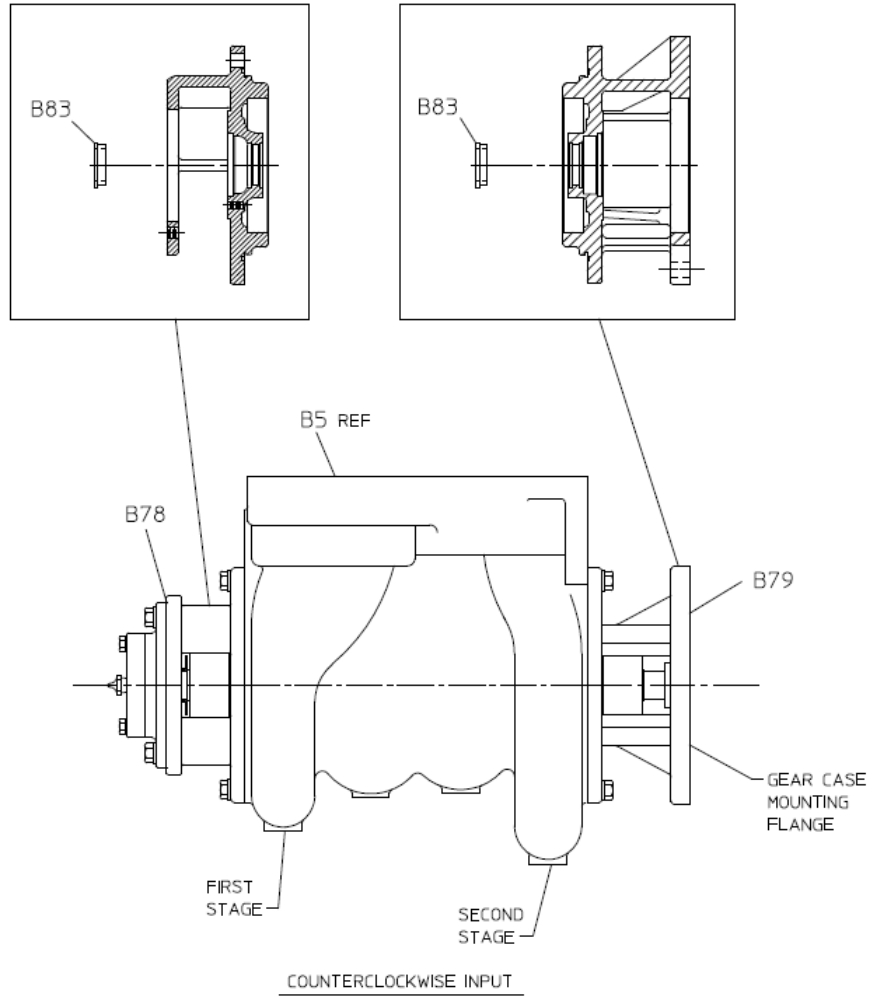
REF NO.	DESCRIPTION
B83	Head bushing
B84	Throttle bushing
B85	O-ring, 2 x 2-1/8 in.
B88	Lock washer, 1/4 in.
B89	Hex hd screw, 1/4-20 x 1 in.
B90	Hex hd screw, 3/8-16 x 1 in.
B91	Socket hd screw, 1/4-20 x 1-1/4 in.
B108	Serial plate
B109	Drive screw, #6 x 1/4 in.
B121	Flap valve bushing (used after June 17, 2015)



## Pump Body – Head Bushing Installation

REF NO.	DESCRIPTION
B5	Volute body subassembly
B78	Outboard head subassembly

REF NO.	DESCRIPTION
B79	Inboard head subassembly
B83	Head bushing

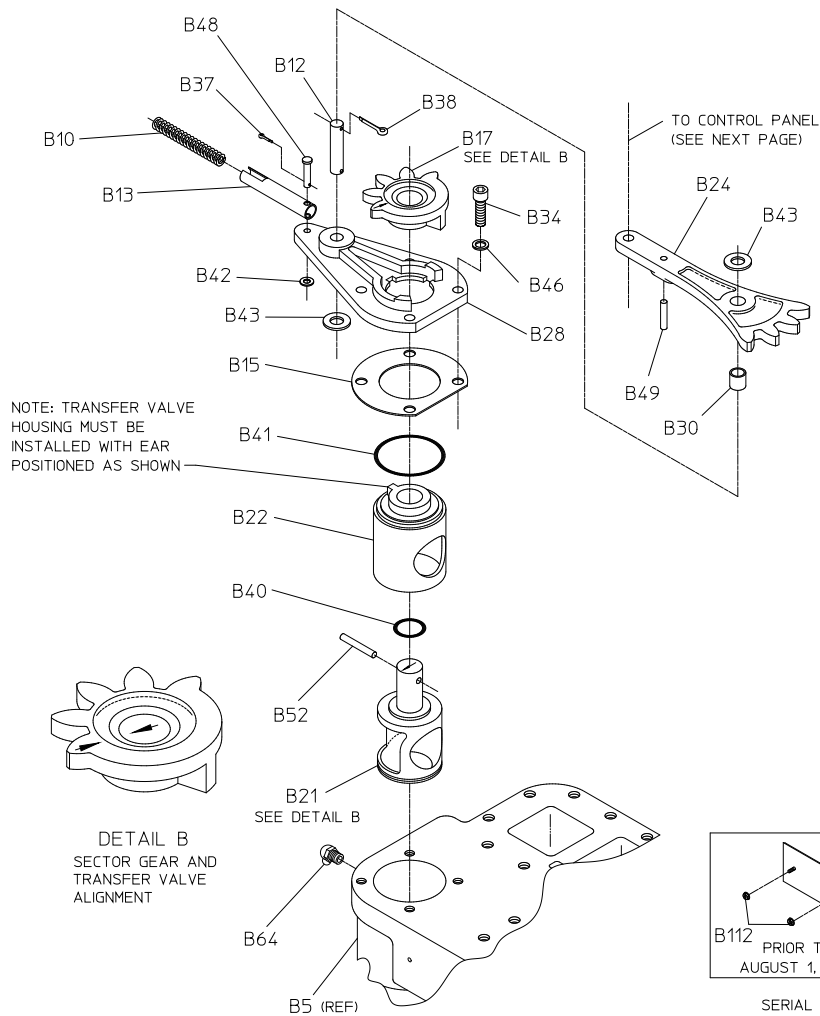


PUMP BODY - HEAD BUSHING INSTALLATION  
 HEAD POSITION AND BUSHING  
 INSTALLATION BASED ON  
 GEAR CASE INPUT ROTATION

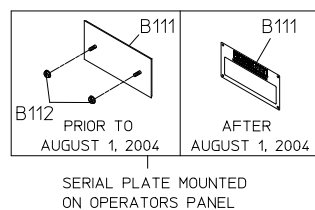
## Transfer Valve - Components

REF NO.	DESCRIPTION
B5	Volute body subassembly
B10	Over center spring
B12	Pivot pin, 1/2 x 2-1/2 in.
B13	Spring housing
B15	Transfer valve cover gasket
B17	Sector gear
B21	Transfer valve
B22	Transfer valve housing
B24	Transfer valve arm assembly
B28	Transfer valve cover
B30	Sleeve bearing
B34	Socket hd screw, 3/8-16 x 1-1/4 in.

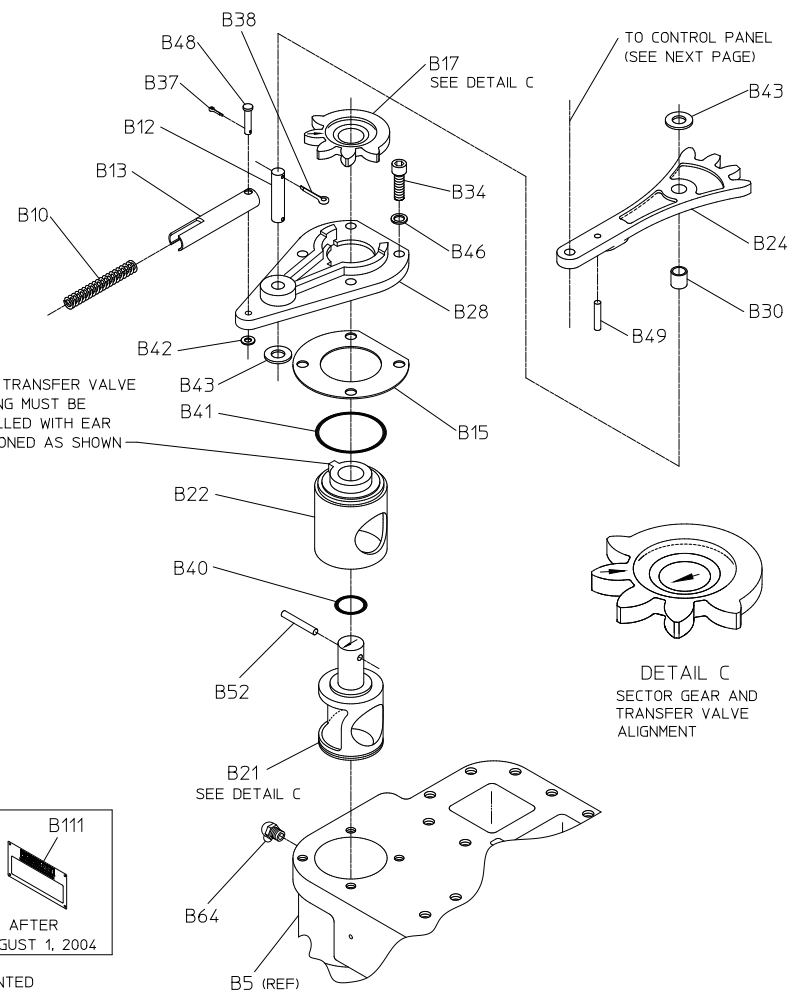
REF NO.	DESCRIPTION
B37	Cotter pin, 5/64 x 1/2 in.
B38	Cotter pin, 1/8 x 1 in.
B40	O-ring, 1 x 1-1/4 in.
B41	O-ring, 2-1/2 x 2-3/4 in.
B42	Plain Washer, Brass, 1/4 in.
B43	Plain washer, 1/2 in., plated
B46	Flat washer, copper, 3/8 in.
B48	Clevis pin, 1/4 x 1-1/4 in.
B49	Spirol pin, heavy, 1/4 x 1-1/4 in.
B52	Groove pin, 1/4 x 1-3/4 in.
B64	Lubrication fitting, 90 Deg., 1/8 in.
B111	Serial plate
B112	Self threading nut



STANDARD POSITION A  
(PARALLEL TO IMPELLER SHAFT)



TRANSFER VALVE - COMPONENTS



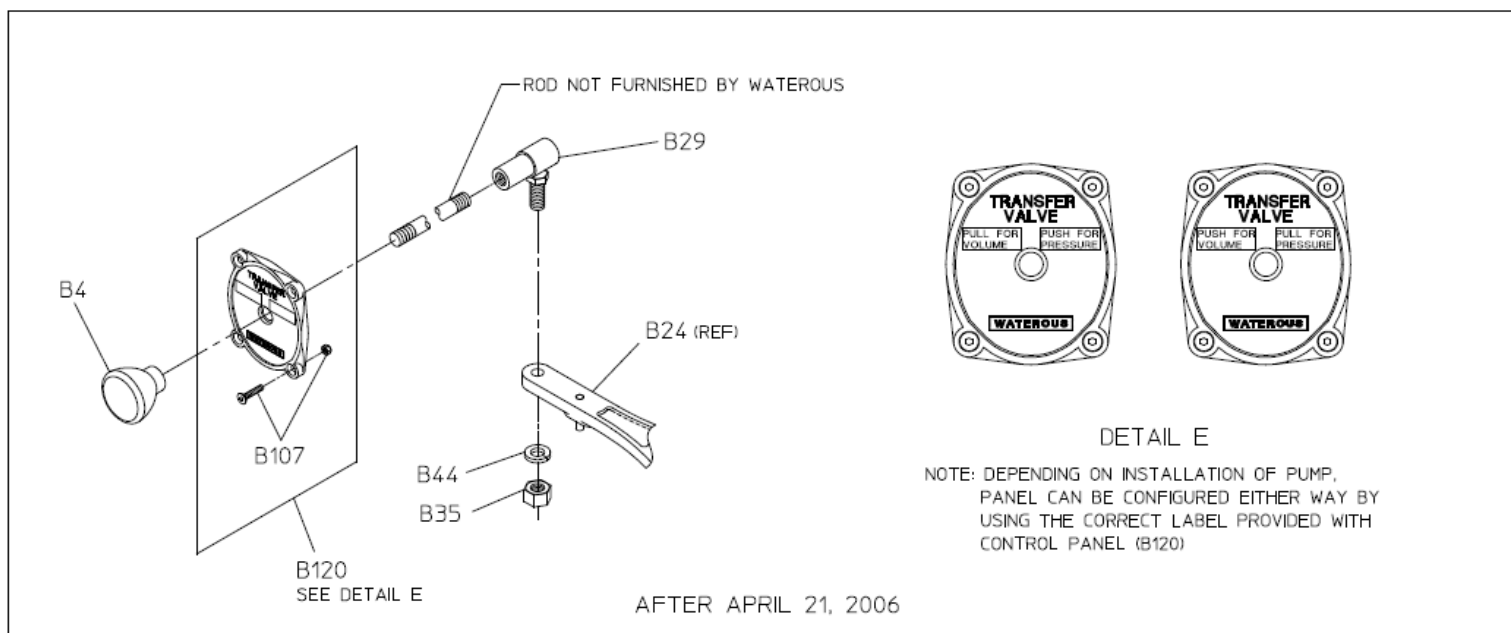
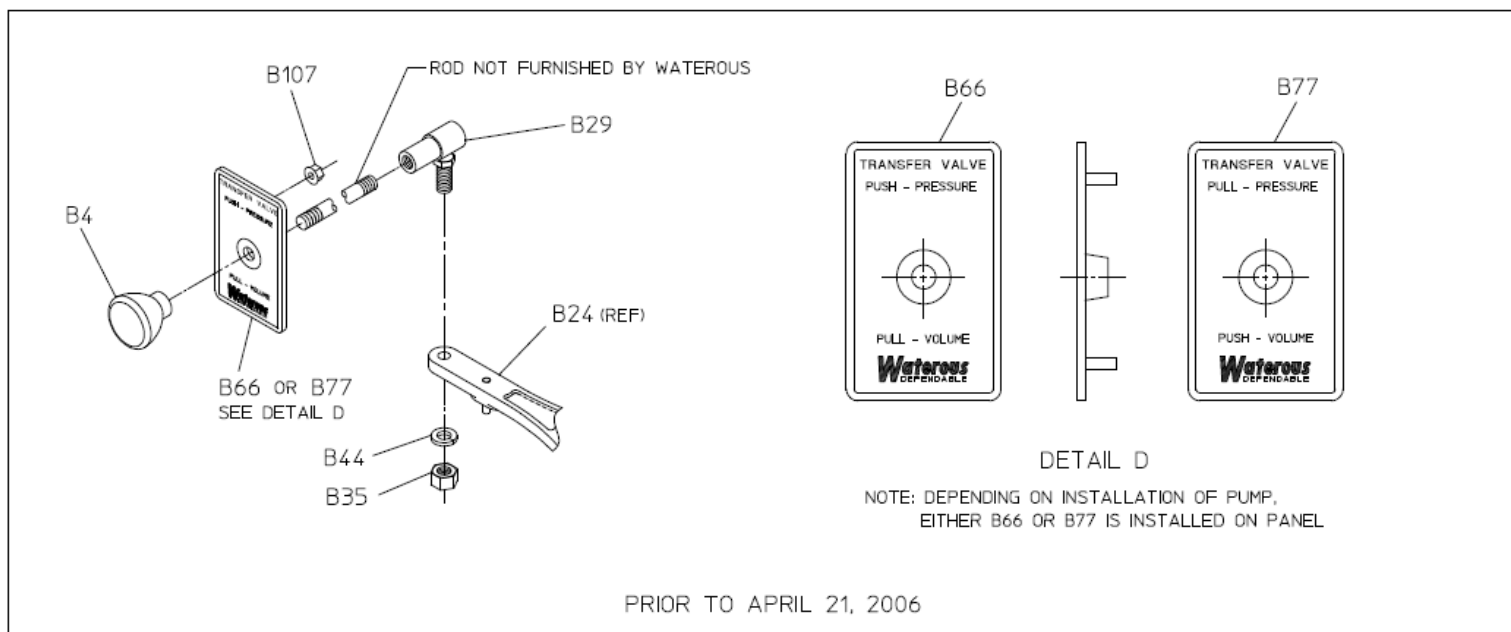
OPTIONAL POSITION B  
(PERPENDICULAR TO IMPELLER SHAFT)

## Transfer Valve – Panel Plates

REF NO.	DESCRIPTION
B4	Knob
B24	Transfer valve arm assembly
B29	Ball joint, 3/8-24
B35	Hex nut, 3/8-24
B44	Lock washer, 3/8 in.

REF NO.	DESCRIPTION
B66	Panel plate (used prior to April 21, 2006)
B77	Panel plate (used prior to April 21, 2006)
B107	Control panel hardware
B120	Control panel (used after April 21, 2006)



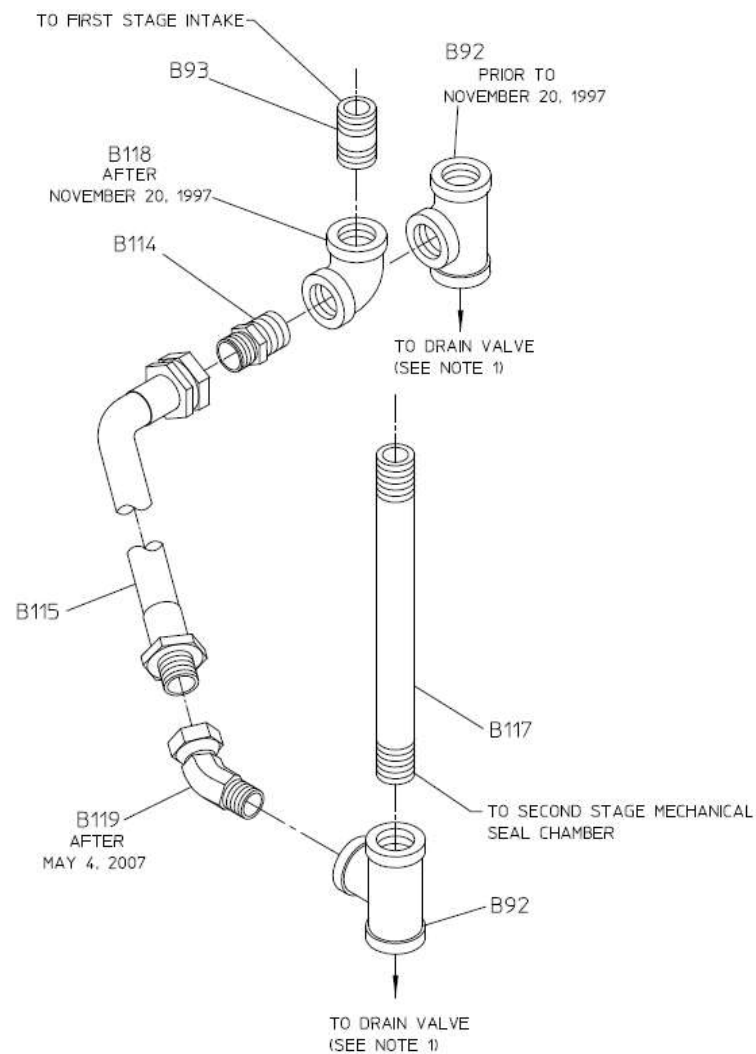
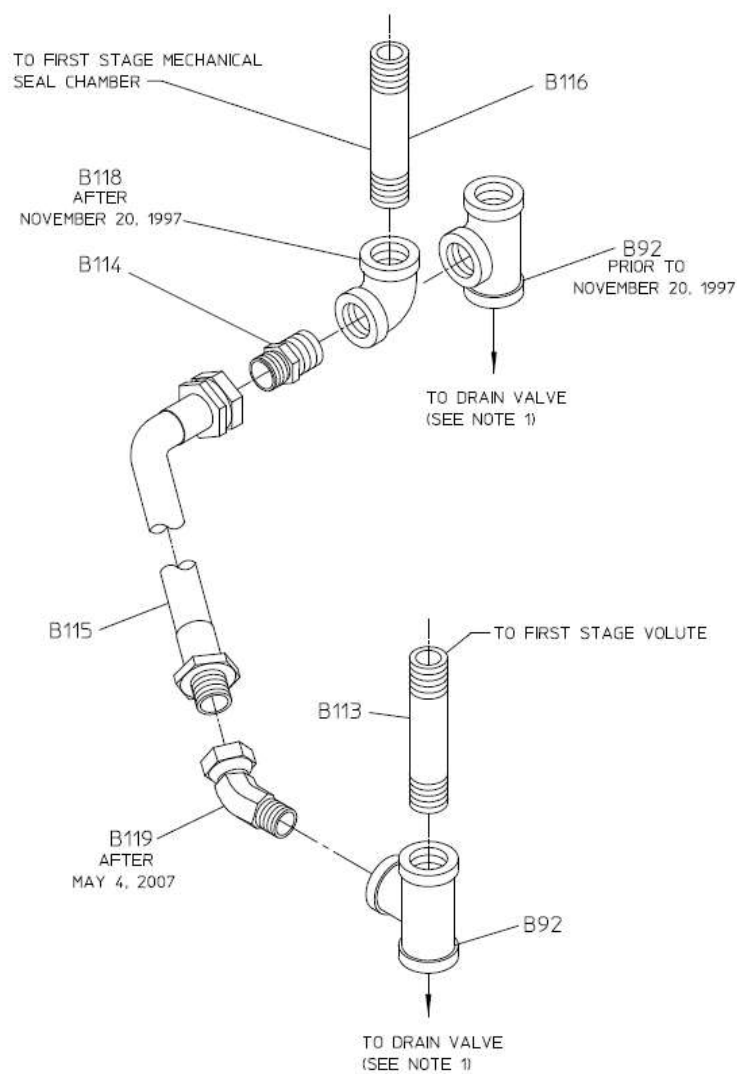


TRANSFER VALVE - PANEL PLATES

**Mechanical Seal Cooling Lines**  
Hose Design - Used After March 15, 1995

REF NO.	DESCRIPTION
B92	Pipe tee, 1/4 NPT (used after November 20, 1997)
B93	Pipe nipple, 1/4 NPT x 7/8 in.
B113	Pipe nipple, 1/4 x 2-1/2 in.
B114	Male union, 1/4 NPTF x 1/4 NPMS
B115	Hose assembly, 1/4 NPT x 8-3/4 in.

REF NO.	DESCRIPTION
B116	Pipe nipple, 1/4 x 4 in. (used after November 20, 1997)
B117	Pipe nipple, 1/4 x 5-1/2 in.
B118	Pipe elbow, 90 Deg. X 1/4 NPT
B119	Adapter swivel, 45 Deg., 1/4 NPT x 1/4 NPSM (used after May 4, 2007)



#### MECHANICAL SEAL COOLING LINES

HOSE DESIGN USED AFTER MARCH 15, 1995

NOTE:

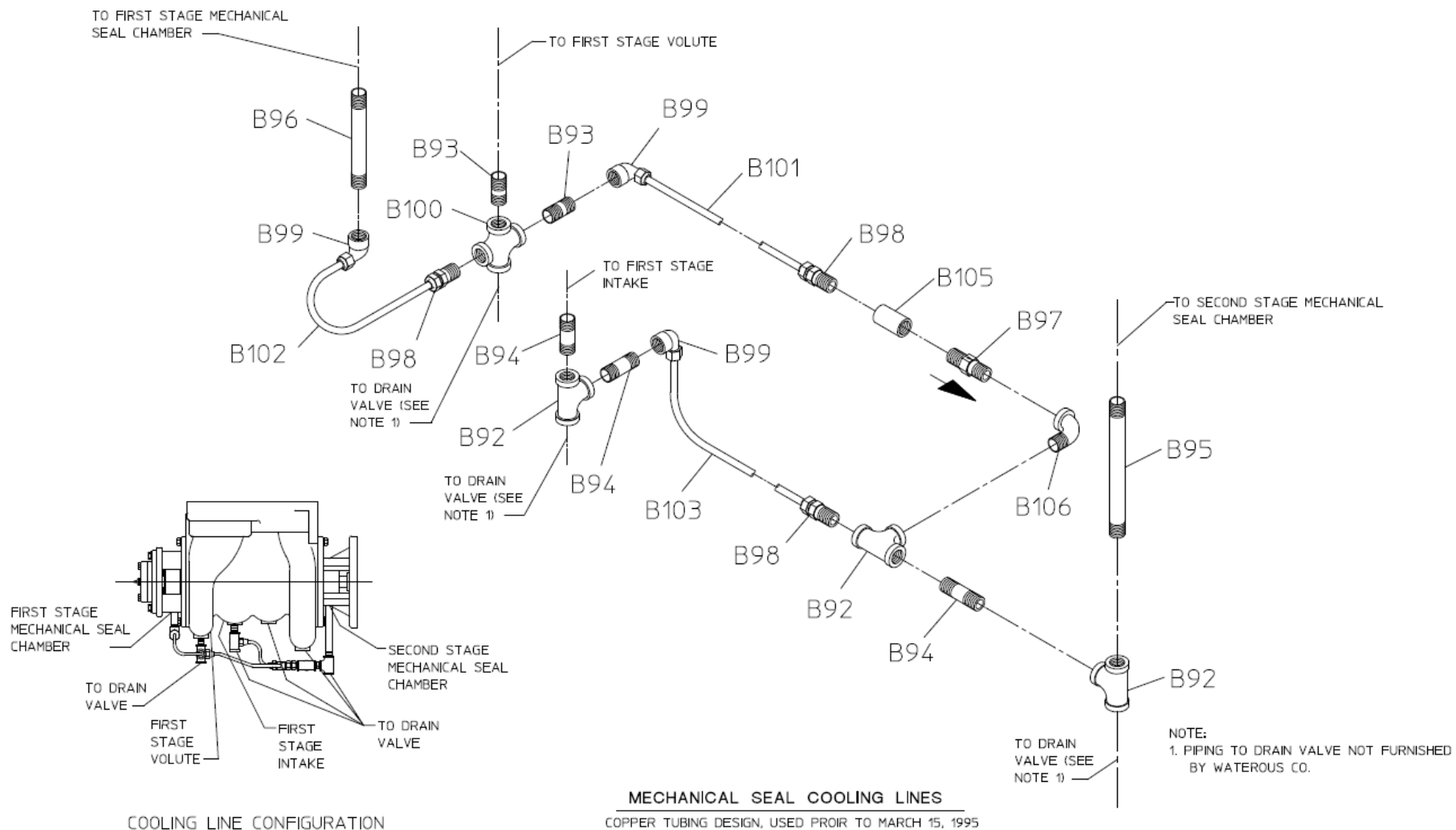
1. PIPING TO DRAIN VALVE NOT FURNISHED BY WATEROUS.

## Mechanical Seal Cooling Lines

Copper Tubing Design – Used Prior to March 15, 1995

REF NO.	DESCRIPTION
B92	Pipe tee, 1/4 NPT
B93	Pipe nipple, 1/4 NPT x 7/8 in.
B94	Pipe nipple, 1/4 NPT x 1-1/2 in.
B95	Pipe nipple, 1/4 NPT x 6 in.
B96	Pipe nipple, 1/4 NPT x 3-1/2 in.
B97	Check valve, 1/4 in.
B98	Tube connector, 1/4 NPT x 1/4 in.
B99	Compression connector, 90 Deg., 1/4 NPT x 1/4 tube

REF NO.	DESCRIPTION
B100	Cross, 1/4 NPT
B101	Copper tube, 1/4 x 5-1/2 in.
B102	Copper tube, 1/4 x 5-1/4 in.
B103	Copper tube, 1/4 x 4-1/2 in.
B105	Pipe coupling, 1/4 NPT
B106	Street elbow, 90 Deg., x 1/4 NPT



## Intake and Discharge Fittings

REF NO.	DESCRIPTION
B3	Stud, 7/16-14/7/16-20 x 1-5/8 in. or 2-3/4 in.
B5	Volute body subassembly
B14	Discharge adapter gasket
B23	Suction adapter gasket
B31	Hex hd screw, 7/16-14 x 1 in., steel or stainless steel
B32	Hex hd screw, 7/16-14 x 1-1/4 in.
B36	Hex nut, 7/16-20
B47	Flat washer, copper, 7/16 in.

REF NO.	DESCRIPTION
B50	Sq hd pipe plug, 1/4 NPT
B51	Sq hd pipe plug, 3/8 NPT
B54	Hex hd screw, 7/16-14 x 1-3/4 in. or 2-1/2 in., steel, stainless steel or grade 5)
B73	Suction adapter, 4 NPT
B75	Discharge adapter, 2 NPT or 2-1/2 NPT
B76	Tapped flange, 2-1/2 NPT
B110	Discharge extension

