



Document Number	Issue Date	Rev. Date
SPL82372	03/16/98	12/05/11

CLV, CLR Body Assembly Service Parts List

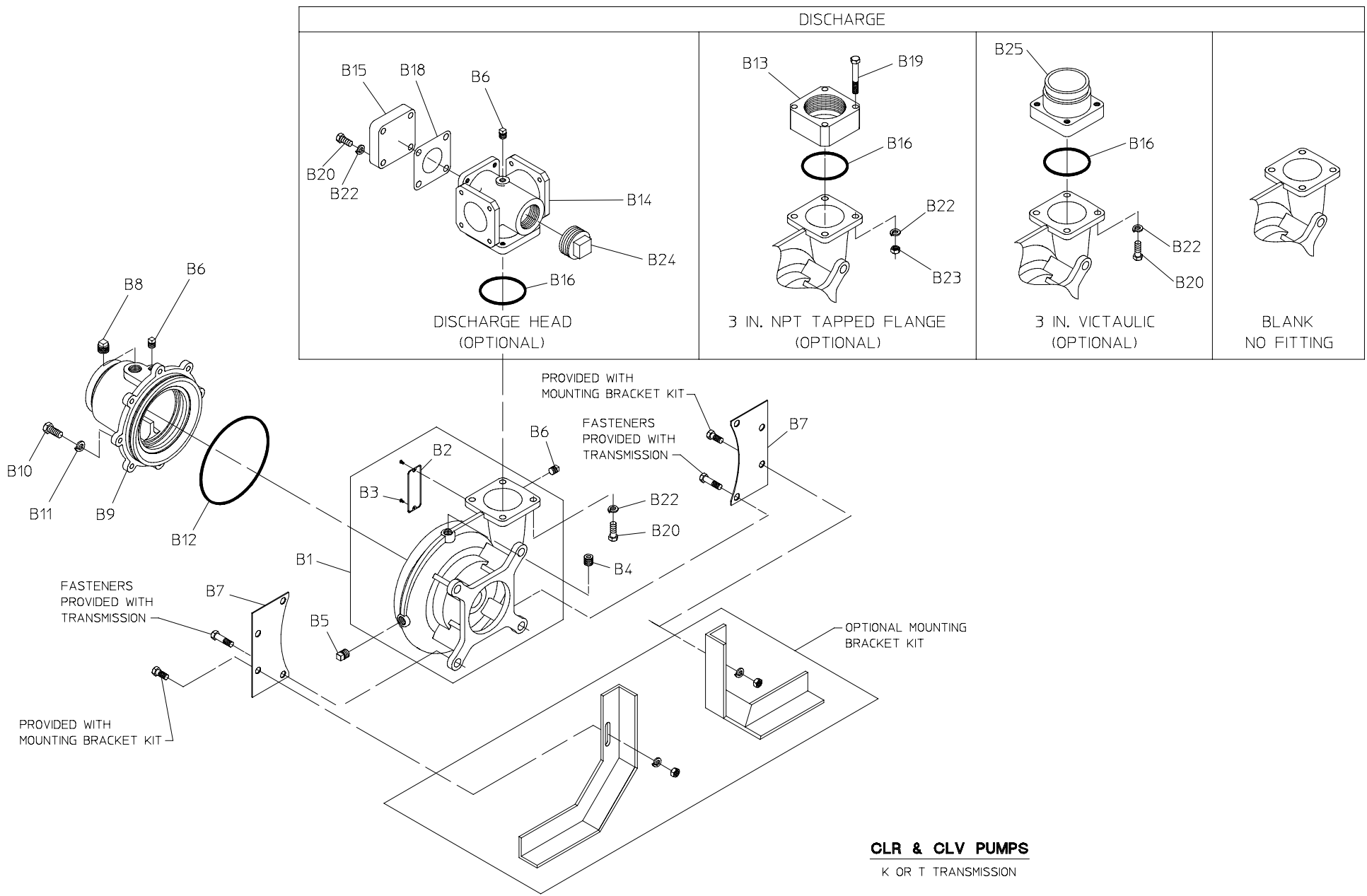
Index:

Pump Model	Transmission	See Page
		Body Assembly, Intake and Discharge
CLR, CLV	K or T	2, 3
	PA	4, 5

K or T Transmission

REF. NO.	DESCRIPTION
B1	Volute Body Subassembly (Includes B2, B3 and Wear Ring)
B2	Serial Plate
B3	Drive Screw, No. 6 x 1/4 in.
B4	Headless Pipe Plug, 3/8 in.
B5	Pipe Plug, 3/8 in.
B6	Pipe Plug, 1/4 in.
B7	Mounting Plate
B8	Pipe Plug, 3/4 in.
B9	Intake Adapter Subassembly (Includes Wear Ring)
B10	Hex Hd Screw, 3/8-16 x 1 in.
B11	Lock Washer, 3/8 in.
B12	O-ring, 7-1/4 x 7-1/2 in.

REF. NO.	DESCRIPTION
B13	Tapped Flange, 3 in. NPT
B14	Discharge Head
B15	Blind Flange
B16	O-ring, 3-1/2 x 3-3/4 in.
B18	Flange Gasket
B19	Hex Hd Screw, 7/16-20 x 3 in.
B20	Hex Hd Screw, 7/16-14 x 1-1/2 in.
B22	Lock Washer, 7/16 in.
B23	Hex Nut, 7/16-20
B24	Pipe Plug, 2 in.
B25	Victaulic Fitting, 3 in.

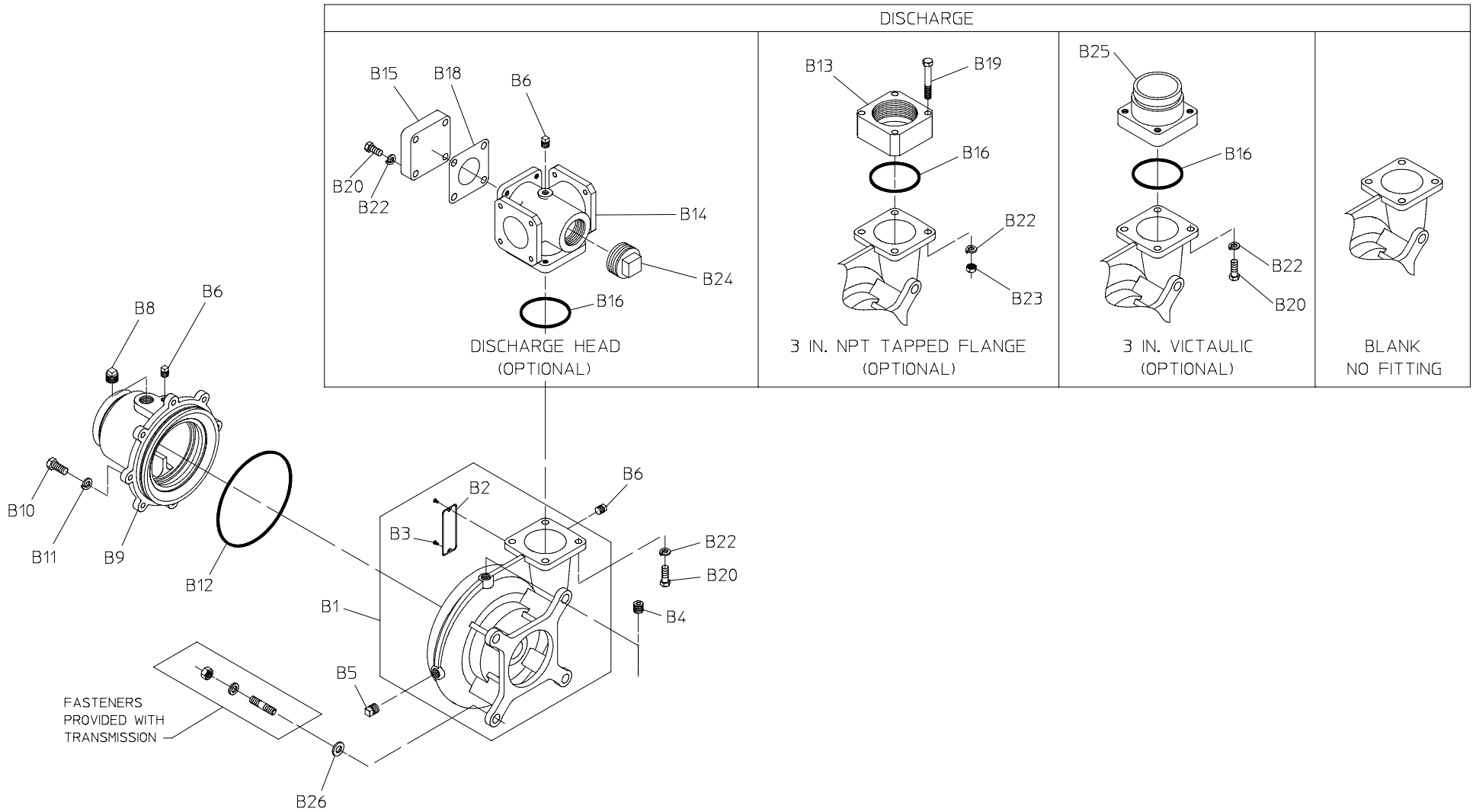


CLR & CLV PUMPS
K OR T TRANSMISSION

PA Transmission

REF. NO.	DESCRIPTION
B1	Volute Body Subassembly (Includes B2, B3 and Wear Ring)
B2	Serial Plate
B3	Drive Screw, No. 6 x 1/4 in.
B4	Headless Pipe Plug, 3/8 in.
B5	Pipe Plug, 3/8 in.
B6	Pipe Plug, 1/4 in.
B8	Pipe Plug, 3/4 in.
B9	Intake Adaper Subassembly (Includes Wear Ring)
B10	Hex Hd Screw, 3/8-16 x 1 in.
B11	Lock Washer, 3/8 in.
B12	O-ring, 7-1/4 x 7-1/2 in.

REF. NO.	DESCRIPTION
B13	Tapped Flange, 3 in. NPT
B14	Discharge Head
B15	Blind Flange
B16	O-ring, 3-1/2 x 3-3/4 in.
B18	Flange Gasket
B19	Hex Hd Screw, 7/16-20 x 3 in.
B20	Hex Hd Screw, 7/16-14 x 1-1/2 in.
B22	Lock Washer, 7/16 in.
B23	Hex Nut, 7/16-20
B24	Pipe Plug, 2 in.
B25	Victaulic Fitting, 3 in.
B26	Plain Washer, 1/2 in.



CLR & CLV PUMPS

PA TRANSMISSION