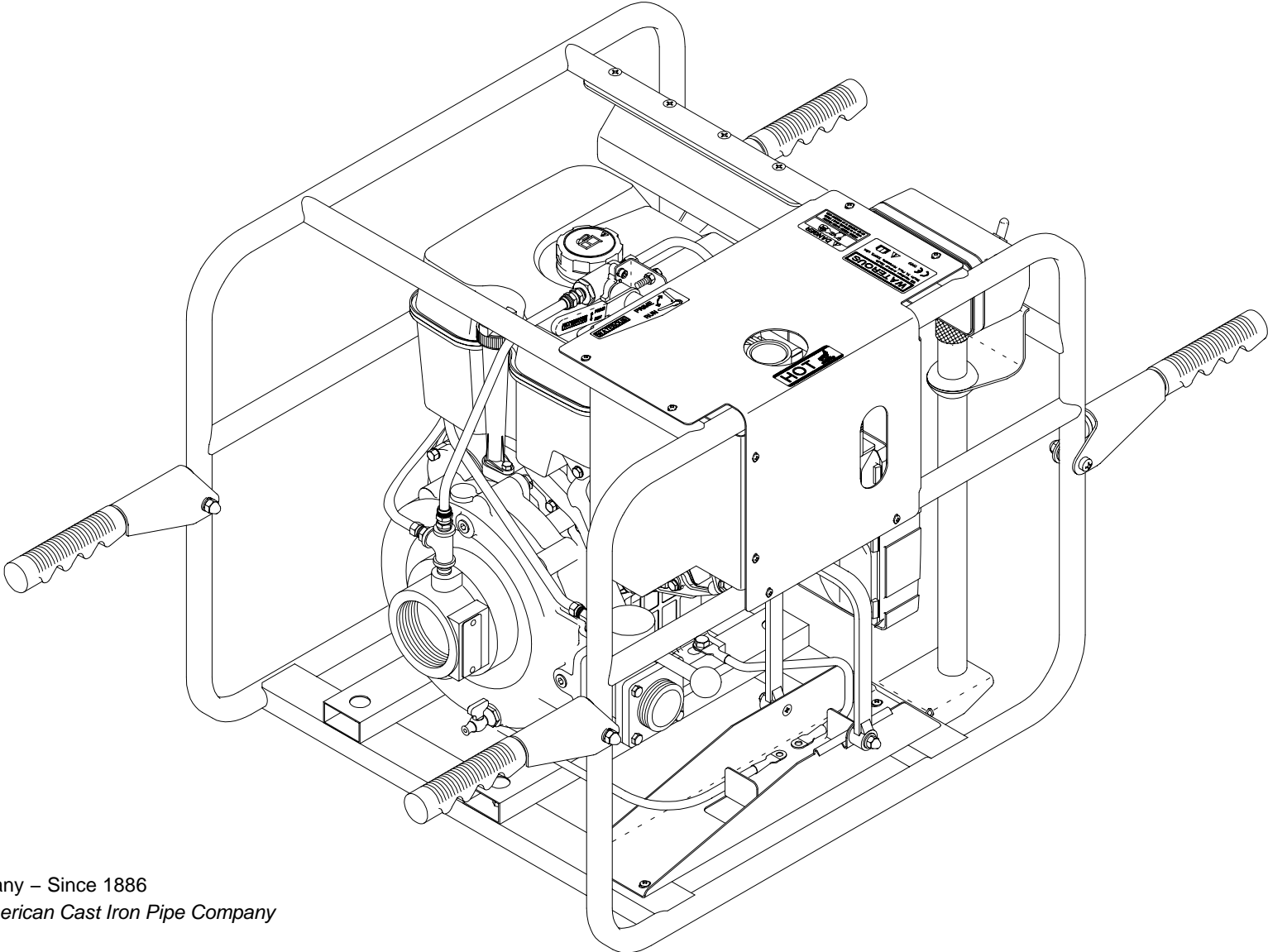




|   |                 |           |
|---|-----------------|-----------|
| Document Number                         | Issue Date      | Rev. Date |
| <b>SPL82644</b>                         | <b>12/05/02</b> |           |
| <b>Model 2515B, 2515F, 2525C, 3025C</b> |                 |           |

# PB13 Series Fire Pump Service Parts List





# Table of Contents

Model PB13–2515B and PB13–2515F Pumps ..... 2 – 5

Model PB13–2525C and PB13–3025C Pumps ..... 6 – 9

Priming System and Rail Base ..... 10 – 11

Instrument Panel ..... 12 – 13

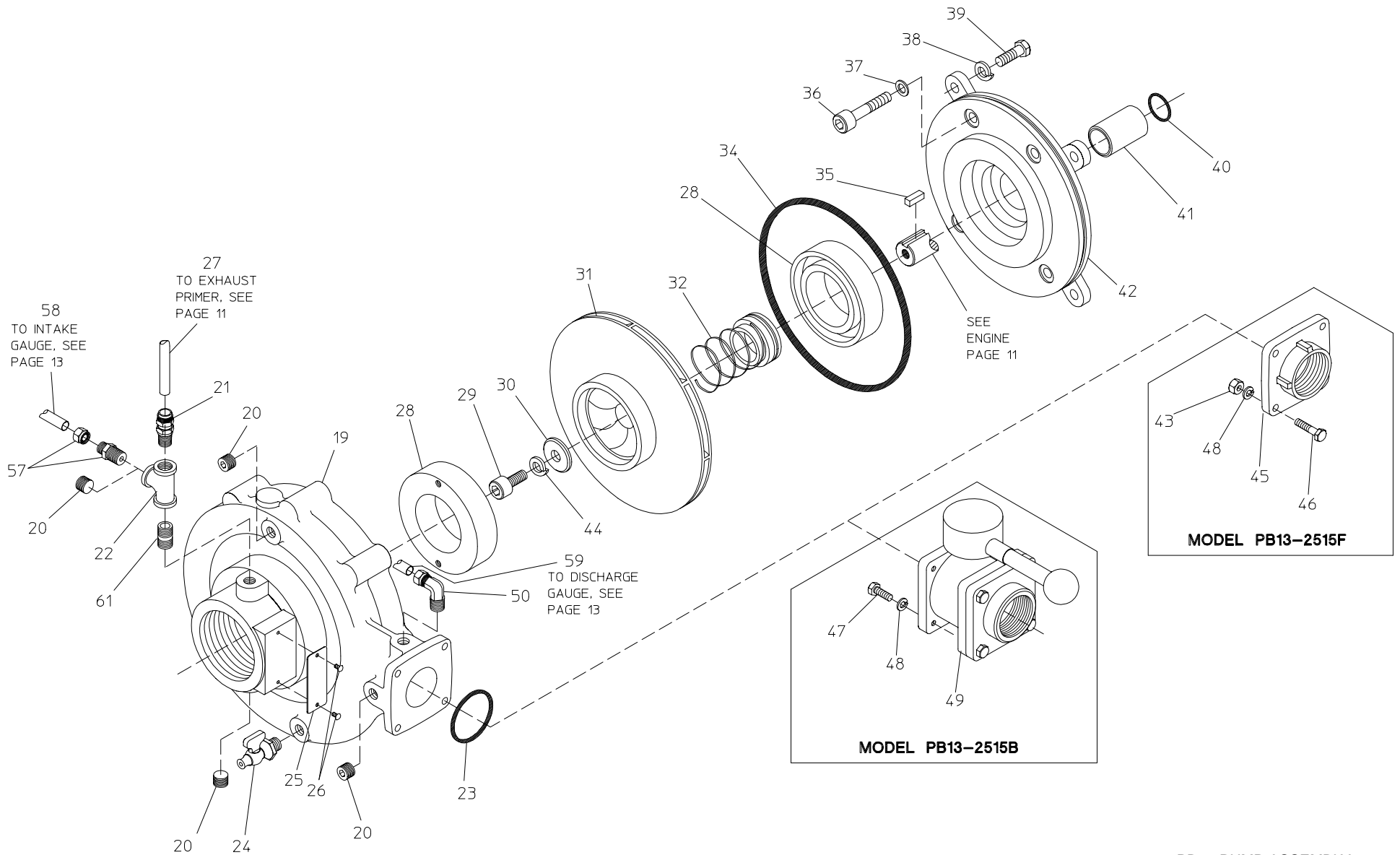
Optional Wrap–Around Base and Optional Mast Light ..... 14 – 15

Wiring Schematic ..... 16 – 17

## Model PB13–2515B & PB13–2515F Pumps

| REF. NO. | DESCRIPTION                                 | QTY    |
|----------|---|--------|
| 19       | Volute Body (Includes 28, Wear Ring)        | 1      |
| 20       | Pipe Plug, 1/4 in. NPT                      | 3 or 5 |
| 21       | Tube Connector, 1/4 in. NPT x 3/8 O.D. Tube | 1      |
| 22       | Pipe Tee, 1/4 in. NPT                       | 1      |
| 23       | O–ring, 2–3/4 x 2–15/16 in.                 | 1      |
| 24       | Drain Cock, 1/4 in. NPT                     | 1      |
| 25       | Serial Plate                                | 1      |
| 26       | Drive Screw, #6 x 1/4 in.                   | 2      |
| 27       | Poly Tubing, 3/8 O.D.                       | 1      |
| 28       | Wear Ring                                   | 2      |
| 29       | Socket hd Screw, 7/16 – 20 x 1 in.          | 1      |
| 30       | Impeller Washer                             | 1      |
| 31       | Impeller                                    | 1      |
| 32       | Mechanical Seal                             | 1      |
| 34       | O–ring, 7–3/4 x 8 in.                       | 1      |
| 35       | Square Key, 1/4 x 3/4 in.                   | 1      |
| 36       | Socket hd Screw, 3/8–16 x 2–3/4 in.         | 4      |
| 37       | Copper Washer, 3/8 in.                      | 4      |

| REF. NO. | DESCRIPTION                                     | QTY |
|----------|---|-----|
| 38       | Lock Washer, 3/8 in.                            | 4   |
| 39       | Hex hd Screw, 3/8–16 x 1 in.                    | 4   |
| 40       | O–ring, 1 x 1–1/8 in.                           | 1   |
| 41       | Shaft Sleeve                                    | 1   |
| 42       | Pump to Engine Adapter (Includes 28, Wear Ring) | 1   |
| 43       | Hex Nut, 1/4–20                                 | 4   |
| 44       | Lock Washer, 7/16 in.                           | 1   |
| 45       | Discharge Adapter                               | 1   |
| 46       | Hex hd Screw, 1/4–20 x 1–1/4 in.                | 4   |
| 47       | Hex hd Screw, 1/4–20 x 3/4 in.                  | 4   |
| 48       | Lock Washer, 1/4 in.                            | 4   |
| 49       | Ball Valve, 1–1/2 in. NPT                       | 1   |
| 50       | 90° Male Elbow, 1/4 in. NPT x 1/4 O.D. Tube     | 1   |
| 57       | Male Connector, 1/4 in. NPT x 1/4 O.D. Tube     | 1   |
| 58       | Nylon Tubing, 1/4 O.D.                          | 1   |
| 59       | Nylon Tubing, 1/4 O.D.                          | 1   |
| 61       | Pipe nipple, 1/4 x 7/8 in.                      | 1   |



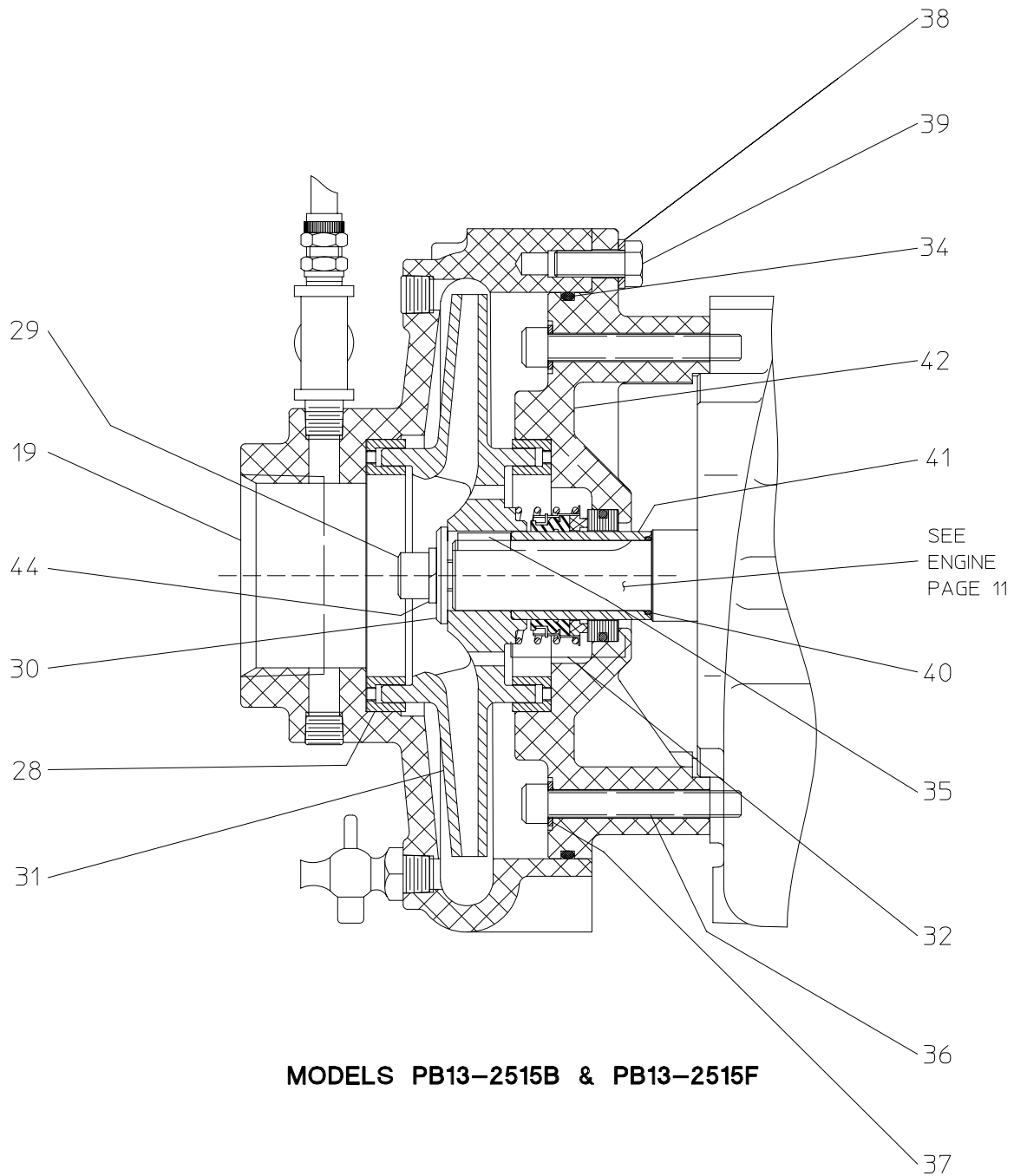
**PUMP ASSEMBLY FOR  
MODELS PB13-2515B & PB13-2515F**  
SEE PAGE 5 FOR CROSS SECTION VIEW

PB13 PUMP ASSEMBLY  
SPL82644  
WATEROUS COMPANY  
SOUTH ST. PAUL, MN 55075  
PAGE 3 OF 17

## Model PB13–2515B & PB13–2515F Pumps

| REF. NO. | DESCRIPTION                          | QTY |
|----------|--------------------------------------|-----|
| 19       | Volute Body (Includes 28, Wear Ring) | 1   |
| 28       | Wear Ring                            | 2   |
| 29       | Socket hd Screw, 7/16–20 x 1 in.     | 1   |
| 30       | Impeller Washer                      | 1   |
| 31       | Impeller                             | 1   |
| 32       | Mechanical Seal                      | 1   |
| 34       | O–Ring, 7–3/4 x 8                    | 1   |
| 35       | Square Key, 1/4 x 3/4 in.            | 1   |

| REF. NO. | DESCRIPTION                                     | QTY |
|----------|---|-----|
| 36       | Socket hd Screw, 3/8–16 x 2–3/4 in.             | 4   |
| 37       | Copper Washer, 3/8 in.                          | 4   |
| 38       | Lock Washer, 3/8 in.                            | 4   |
| 39       | Hex hd Screw, 3/8–16 x 1 in.                    | 4   |
| 40       | O–Ring, 1 x 1–1/8 in.                           | 1   |
| 41       | Shaft Sleeve                                    | 1   |
| 42       | Pump to Engine Adapter (Includes 28, Wear Ring) | 1   |
| 44       | Lock Washer, 7/16 in.                           | 1   |



**MODELS PB13-2515B & PB13-2515F**

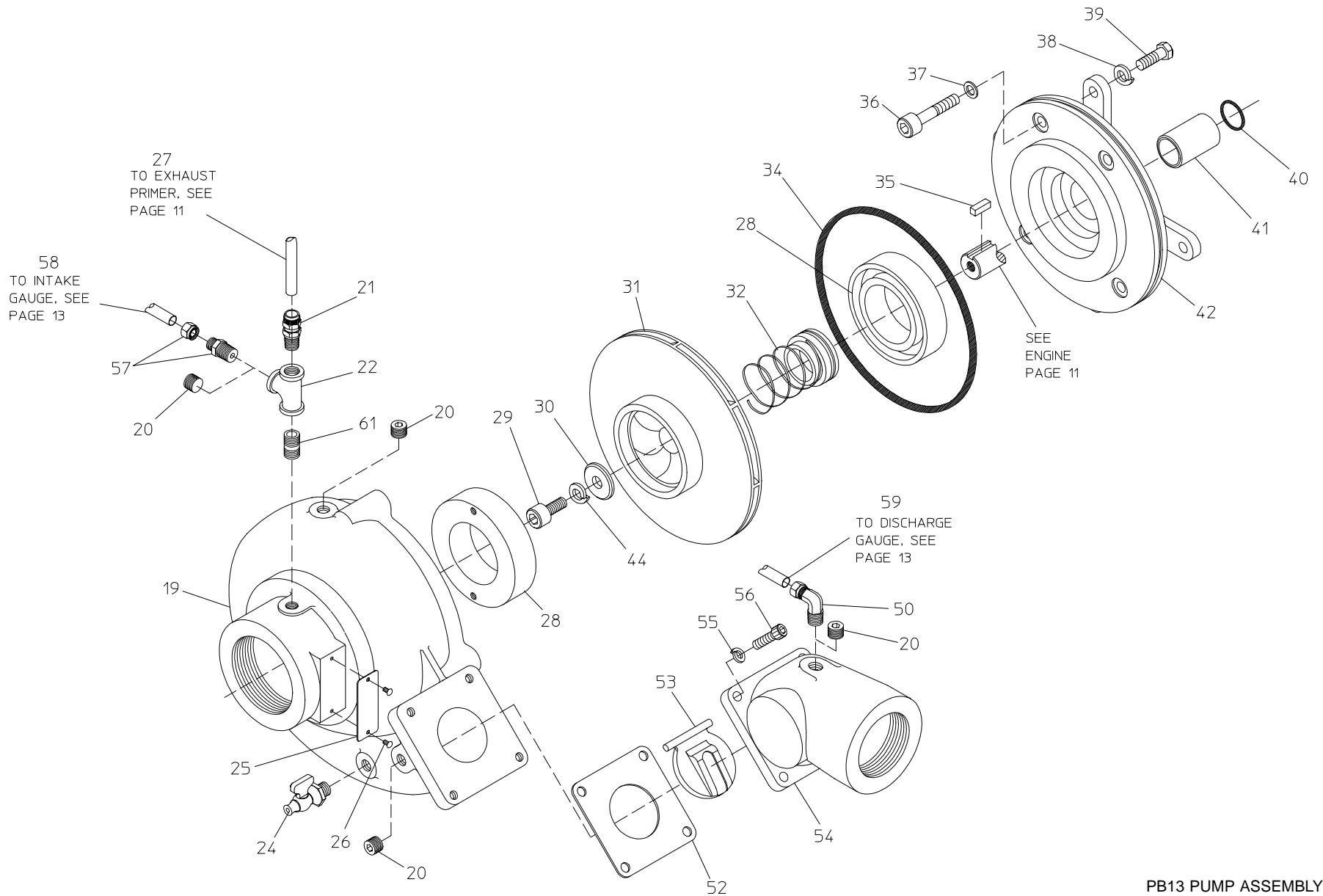
PB13 PUMP ASSEMBLY  
 SPL82644  
 WATEROUS COMPANY  
 SOUTH ST. PAUL, MN 55075  
 PAGE 5 OF 17

## Model PB13–2525C & PB13–3025C Pumps

| REF. NO. | DESCRIPTION                                 | QTY    |
|----------|---|--------|
| 19       | Volute Body (Includes 28, Wear Ring)        | 1      |
| 20       | Pipe Plug, 1/4 in. NPT                      | 2 or 4 |
| 21       | Tube Connector, 1/4 in. NPT x 3/8 O.D. Tube | 1      |
| 22       | Pipe Tee, 1/4 in. NPT                       | 1      |
| 24       | Drain Cock, 1/4 in. NPT                     | 1      |
| 25       | Serial Plate                                | 1      |
| 26       | Drive Screw, #6 x 1/4 in.                   | 2      |
| 27       | Poly Tubing, 3/8 O.D.                       | 1      |
| 28       | Wear Ring                                   | 2      |
| 29       | Socket hd Screw, 7/16 – 20 x 1 in.          | 1      |
| 30       | Impeller Washer                             | 1      |
| 31       | Impeller                                    | 1      |
| 32       | Mechanical Seal                             | 1      |
| 34       | O–ring, 7–1/4 x 7–1/2 in.                   | 1      |
| 35       | Square Key, 1/4 x 3/4 in.                   | 1      |
| 36       | Socket hd Screw, 3/8–16 x 2–3/4 in.         | 4      |
| 37       | Copper Washer, 3/8 in.                      | 4      |

| REF. NO. | DESCRIPTION                                     | QTY |
|----------|---|-----|
| 38       | Lock Washer, 3/8 in.                            | 4   |
| 39       | Hex hd Screw, 3/8–16 x 1 in.                    | 4   |
| 40       | O–ring, 1 x 1–1/8 in.                           | 1   |
| 41       | Shaft Sleeve                                    | 1   |
| 42       | Pump to Engine Adapter (Includes 28, Wear Ring) | 1   |
| 44       | Lock Washer, 7/16 in.                           | 1   |
| 50       | 90° Male Elbow, 1/4 in. NPT x 1/4 O.D. Tube     | 1   |
| 52       | Gasket  | 1   |
| 53       | Flap Valve                                      | 1   |
| 54       | Discharge Elbow, 2–1/2 in. NPT                  | 1   |
| 55       | Lock Washer, 5/16 in.                           | 4   |
| 56       | Socket hd Screw, 5/16–18 x 1 in.                | 4   |
| 57       | Male Connector, 1/4 in. NPT x 1/4 O.D. Tube     | 1   |
| 58       | Nylon Tubing, 1/4 O.D.                          | 1   |
| 59       | Nylon Tubing, 1/4 O.D.                          | 1   |
| 61       | Pipe nipple, 1/4 x 7/8 in.                      | 1   |





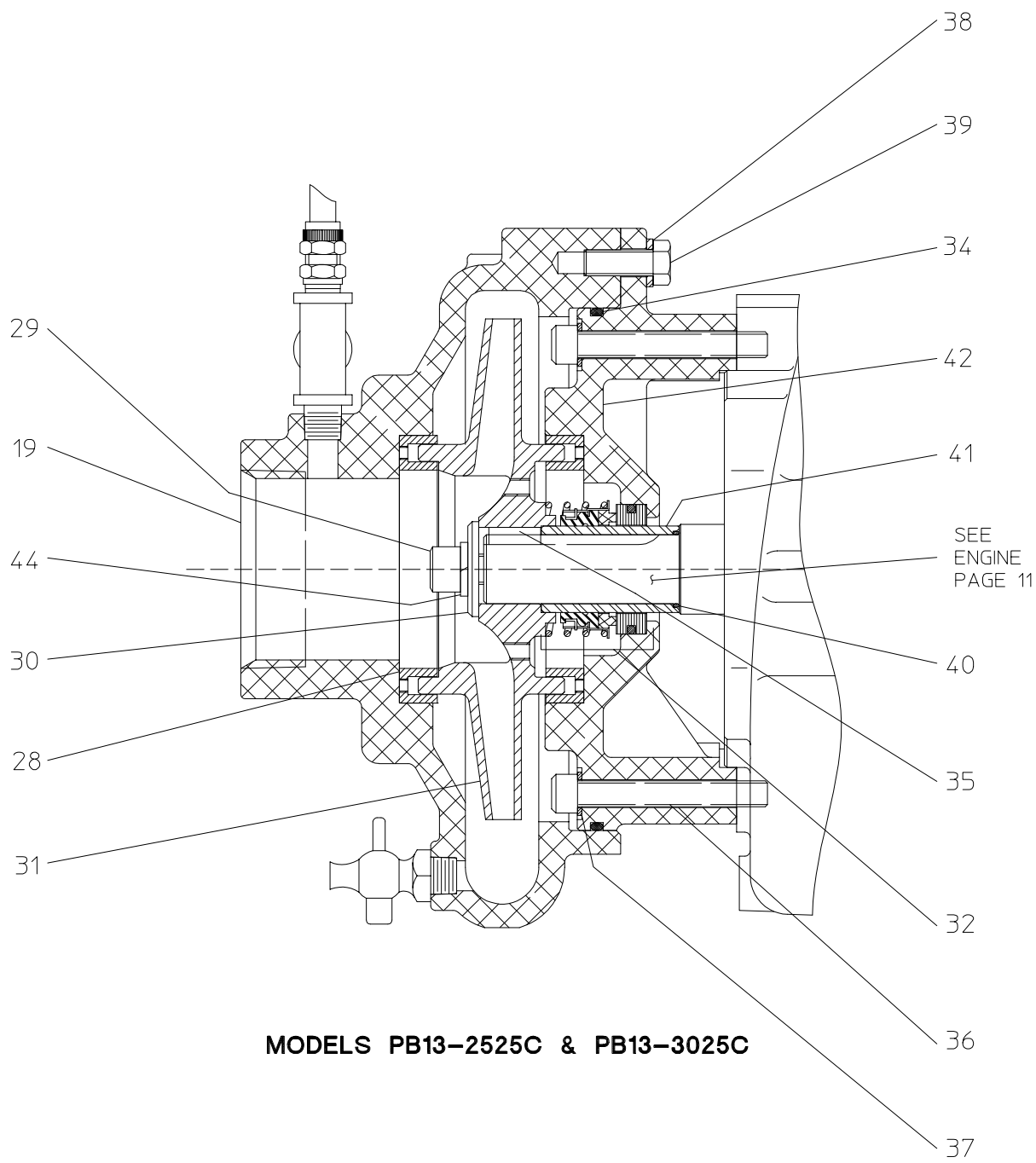
**PUMP ASSEMBLY FOR  
MODELS PB13-2525C & PB13-3025C**  
SEE PAGE 9 FOR CROSS SECTION VIEW

**PB13 PUMP ASSEMBLY**  
SPL82644  
WATEROUS COMPANY  
SOUTH ST. PAUL, MN 55075  
PAGE 7 OF 17

## Model PB13–2525C & PB13–3025C Pumps

| REF.<br>NO. | DESCRIPTION                          | QTY |
|-------------|--------------------------------------|-----|
| 19          | Volute Body (Includes 28, Wear Ring) | 1   |
| 28          | Wear Ring                            | 2   |
| 29          | Socket hd Screw, 7/16–20 x 1 in.     | 1   |
| 30          | Impeller Washer                      | 1   |
| 31          | Impeller                             | 1   |
| 32          | Mechanical Seal                      | 1   |
| 34          | O–Ring, 7–1/4 x 7–1/2 in.            | 1   |
| 35          | Square Key, 1/4 x 3/4 in.            | 1   |

| REF.<br>NO. | DESCRIPTION                                     | QTY |
|-------------|---|-----|
| 36          | Socket hd Screw, 3/8–16 x 2–3/4 in.             | 4   |
| 37          | Copper Washer, 3/8 in.                          | 4   |
| 38          | Lock Washer, 3/8 in.                            | 4   |
| 39          | Hex hd Screw, 3/8–16 x 1 in.                    | 4   |
| 40          | O–Ring, 1 x 1–1/8 in.                           | 1   |
| 41          | Shaft Sleeve                                    | 1   |
| 42          | Pump to Engine Adapter (Includes 28, Wear Ring) | 1   |
| 44          | Lock Washer, 7/16 in.                           | 1   |



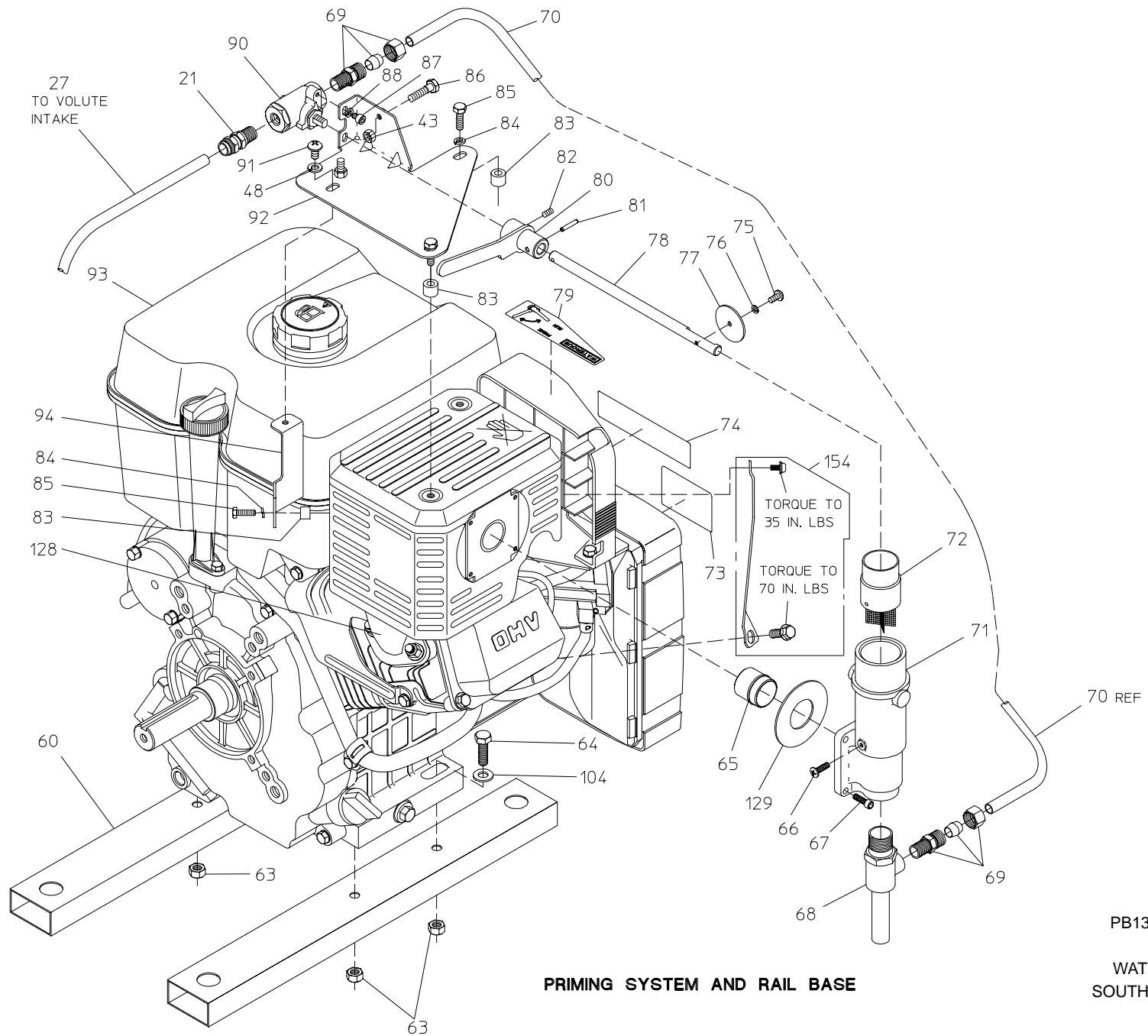
**MODELS PB13-2525C & PB13-3025C**

PB13 PUMP ASSEMBLY  
 SPL82644  
 WATEROUS COMPANY  
 SOUTH ST. PAUL, MN 55075  
 PAGE 9 OF 17

## Priming System & Rail Base

| REF. NO. | DESCRIPTION                                 | QTY |
|----------|---|-----|
| 21       | Tube Connector, 1/4 in. NPT x 3/8 O.D. Tube | 1   |
| 27       | Poly Tubing, 3/8 O.D.                       | 1   |
| 43       | Hex Nut, 1/4-20                             | 2   |
| 48       | Lock Washer, 1/4 in.                        | 1   |
| 60       | Rail Base                                   | 2   |
| 63       | Nylok Nut, 5/16-18                          | 4   |
| 64       | Hex hd Screw, 5/16-18 x 1-1/2 in.           | 4   |
| 65       | Primer Sleeve                               | 1   |
| 66       | Pan hd Screw #10-24 x 1/2 in.               | 1   |
| 67       | Socket hd Screw #10-24 x 5/8 in.            | 4   |
| 68       | Exhaust Primer                              | 1   |
| 69       | Tube Connector, 1/4 in. NPT x 3/8 O.D. Tube | 2   |
| 70       | Primer Tube                                 | 1   |
| 71       | Primer Body                                 | 1   |
| 72       | Spark Arrestor                              | 1   |
| 73       | Warning Decal                               | 1   |
| 74       | Waterous Decal                              | 1   |
| 75       | Pan hd Screw #8-32 x 3/8 in.                | 1   |
| 76       | Lock Washer, #8                             | 1   |
| 77       | Butterfly Valve                             | 1   |

| REF. NO. | DESCRIPTION                       | QTY |
|----------|-----------------------------------|-----|
| 78       | Primer Rod                        | 1   |
| 79       | Primer Decal                      | 1   |
| 80       | Primer Handle                     | 1   |
| 81       | Spirol Pin, 1/8 x 3/4 in.         | 1   |
| 82       | Set Screw, #10-24 x 3/8 in.       | 2   |
| 83       | Primer Spacer                     | 3   |
| 84       | Lock Washer, 6mm                  | 3   |
| 85       | Hex hd Screw, M6-1 x 20mm         | 3   |
| 86       | Hex hd Screw, 1/4-20 x 1 in.      | 2   |
| 87       | Socket hd Screw, #10-24 x 3/8 in. | 2   |
| 88       | Lock Washer, #10                  | 2   |
| 90       | Ball Valve, 1/4 in. NPT           | 1   |
| 91       | Pan hd Scew, 1/4-20 x 1/2 in.     | 1   |
| 92       | Primer Base                       | 1   |
| 93       | 13hp Vanguard Engine              | 1   |
| 94       | Primer Base Support               | 1   |
| 104      | Flat Washer, 5/16 in.             | 4   |
| 128      | Muffler                           | 1   |
| 129      | Primer Gasket                     | 1   |
| 154      | Muffler Bracket                   | 1   |



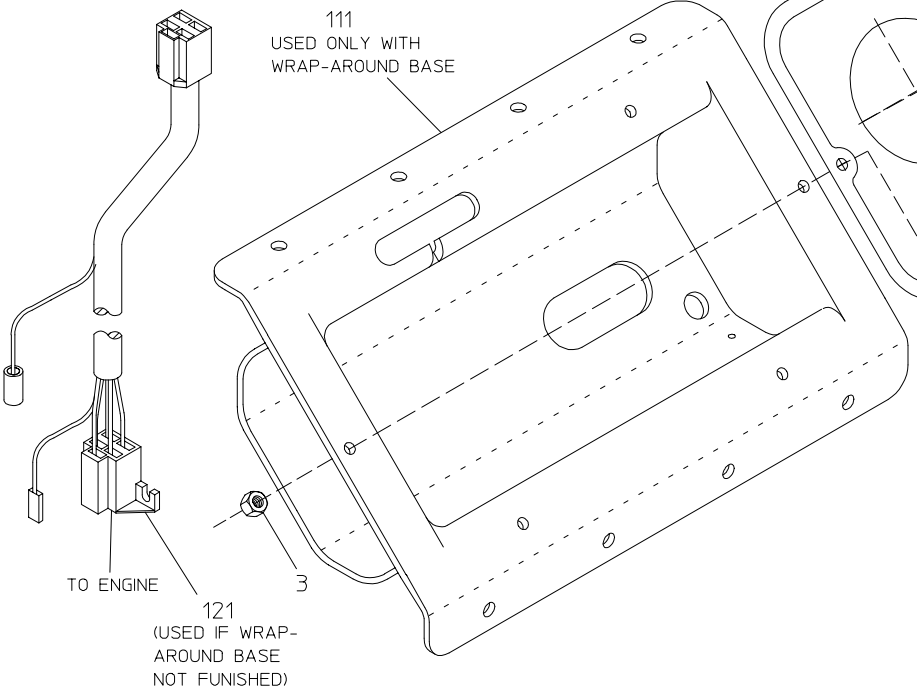
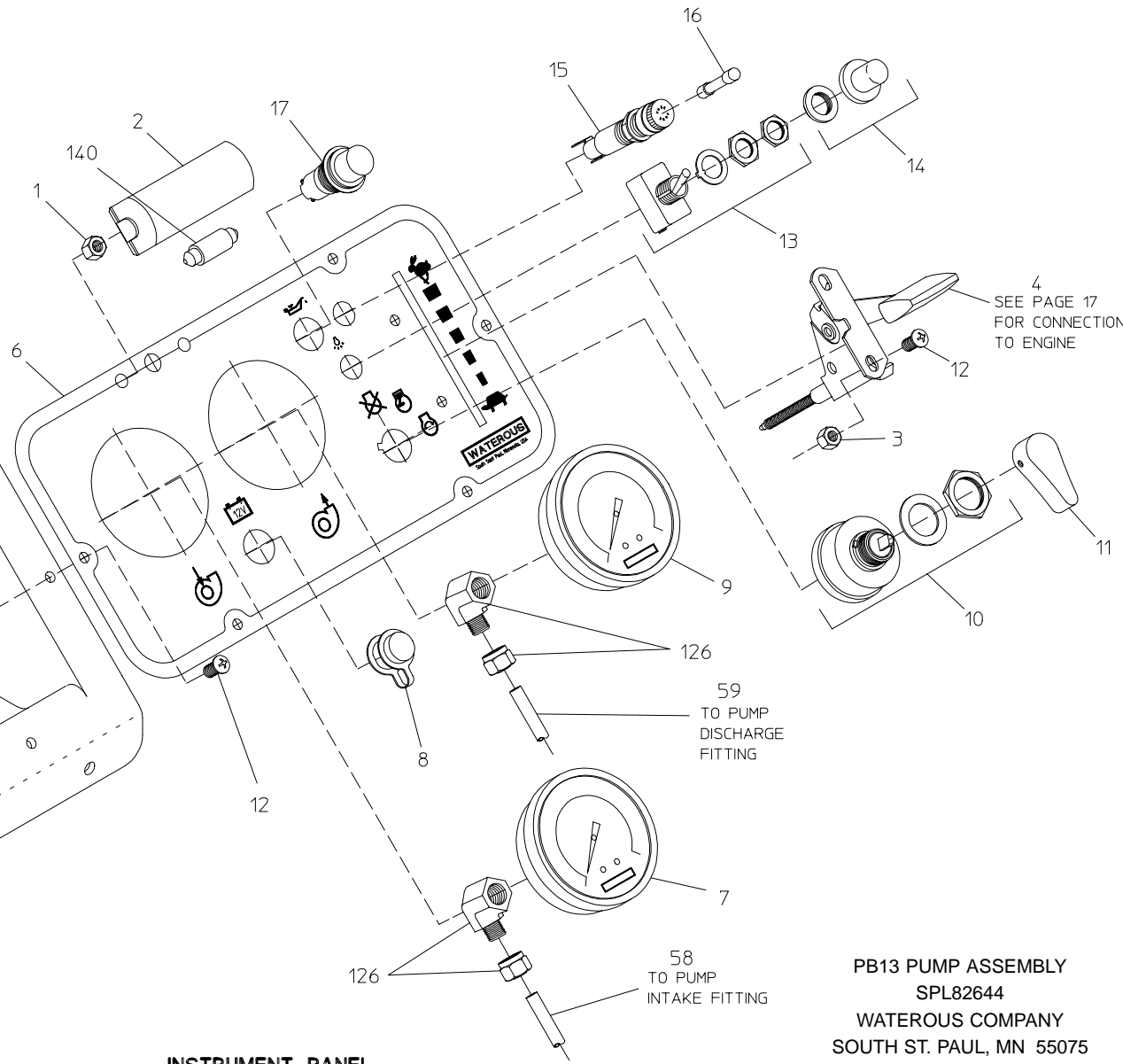
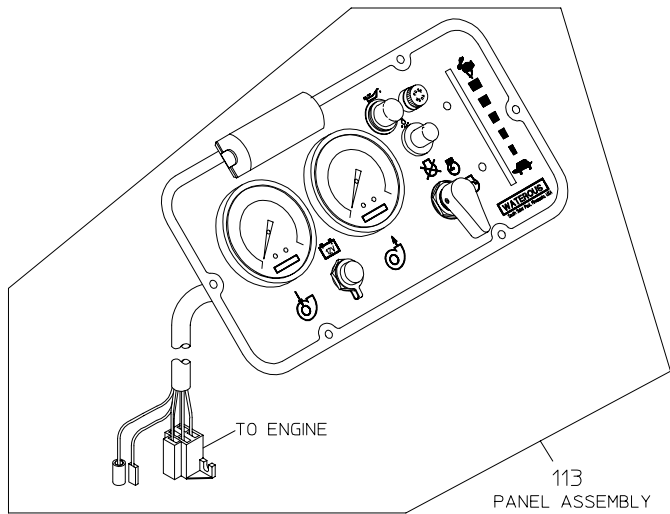
**PRIMING SYSTEM AND RAIL BASE**

PB13 PUMP ASSEMBLY  
 SPL82644  
 WATEROUS COMPANY  
 SOUTH ST. PAUL, MN 55075  
 PAGE 11 OF 17

## Instrument Panel

| REF. NO. | DESCRIPTION                    | QTY    |
|----------|--------------------------------|--------|
| 1        | Hex Nut, 6mm                   | 2      |
| 2        | Panel Light                    | 1      |
| 3        | Nylok Nut , #10-24             | 2 or 7 |
| 4        | Throttle Control               | 1      |
| 5        | Wiring Harness                 | 1      |
| 6        | Panel Plate                    | 1      |
| 7        | Intake Gauge                   | 1      |
| 8        | Connector Cap                  | 1      |
| 9        | Discharge Gauge                | 1      |
| 10       | Ignition Switch                | 1      |
| 11       | Switch Knob                    | 1      |
| 12       | Pan hd Screw, #10-24 x 1/2 in. | 2 or 7 |
| 13       | Light Switch                   | 1      |

| REF. NO. | DESCRIPTION            | QTY |
|----------|------------------------|-----|
| 14       | Switch Seal            | 1   |
| 15       | Fuse Holder            | 1   |
| 16       | 5 Amp Fuse             | 1   |
| 17       | Oil Light              | 1   |
| 43       | Hex Nut, 1/4-20        | 1   |
| 58       | Nylon Tubing, 1/4 O.D. | 1   |
| 59       | Nylon Tubing, 1/4 O.D. | 1   |
| 111      | Panel Insert           | 1   |
| 113      | Panel Assembly         | 1   |
| 121      | Harness Extension      | 1   |
| 126      | 90° Female Elbow       | 2   |
| 140      | 12 Volt / 5 Watt Bulb  | 1   |



**INSTRUMENT PANEL**

**PB13 PUMP ASSEMBLY  
SPL82644  
WATEROUS COMPANY  
SOUTH ST. PAUL, MN 55075  
PAGE 13 OF 17**

## Optional Wrap-Around Base

| REF. NO. | DESCRIPTION                       | QTY |
|----------|-----------------------------------|-----|
| 55       | Lock Washer, 5/16 in.             | 4   |
| 62       | Hex hd Screw, 5/16-18 x 3/4 in.   | 4   |
| 63       | Nylok Nut , 5/16-18               | 4   |
| 73       | Decal - Warning                   | 1   |
| 79       | Decal - Primer                    | 1   |
| 95       | Battery Tray                      | 1   |
| 96       | Pan hd Screw, 1/4-20 x 3/4 in.    | 4   |
| 97       | Nylok Nut, 1/4-20                 | 13  |
| 98       | Nylon Washer, 5/16 in.            | 8   |
| 99       | End Plug                          | 4   |
| 100      | Pan hd Screw, 5/16-18 x 1-3/4 in. | 4   |
| 101      | Carry Handle                      | 4   |
| 102      | Grip                              | 4   |
| 103      | Acorn Nut, 5/16-18                | 4   |

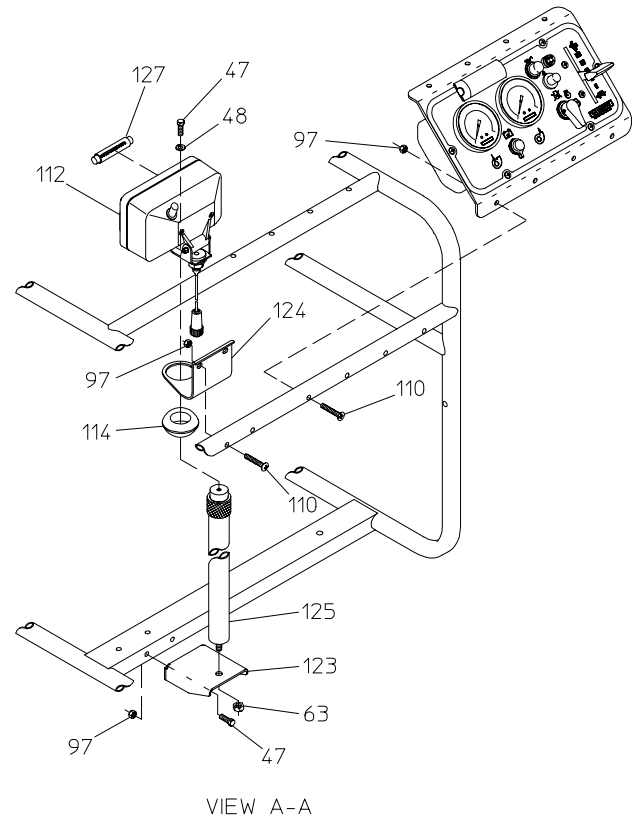
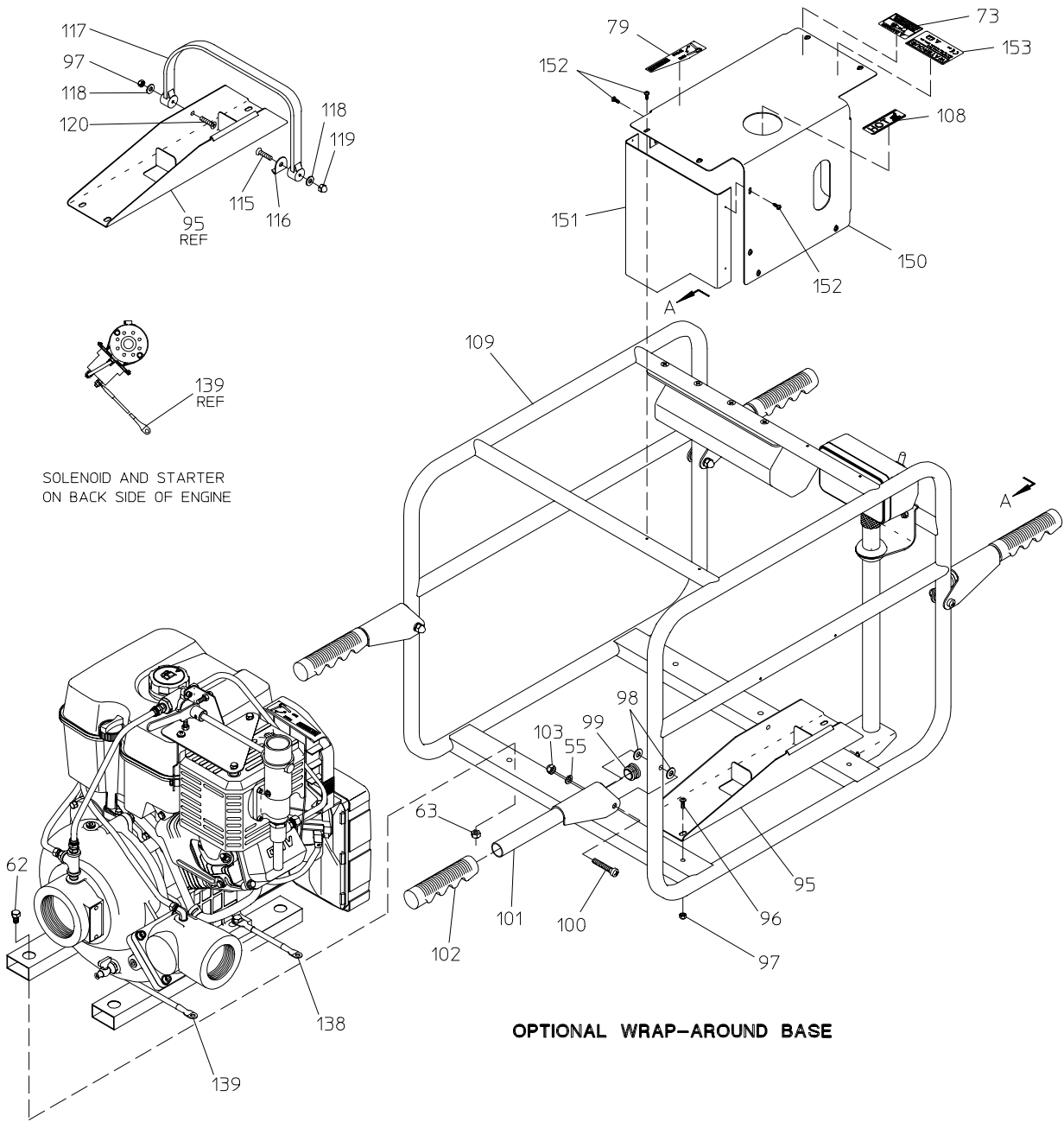
| REF. NO. | DESCRIPTION                             | QTY |
|----------|---|-----|
| 108      | Hot Decal                               | 1   |
| 109      | Wrap-Around Frame                       | 1   |
| 110      | Oval hd Screw, 1/4-20 x 1-1/2 in.       | 8   |
| 115      | Pan hd Screw, 1/4-20 x 1 in.            | 1   |
| 116      | Strap Clip                              | 1   |
| 117      | Battery Strap                           | 1   |
| 118      | Flat Washer, 1/4 in.                    | 2   |
| 119      | Acorn Nut, 1/4-20                       | 1   |
| 120      | Flat hd Screw, 1/4-20 x 1 in.           | 1   |
| 138      | Negative Battery Cable                  | 1   |
| 139      | Positive Battery Cable                  | 1   |
| 150      | Shield - Heat                           | 1   |
| 151      | Shield - Heat                           | 1   |
| 152      | Screw - Pan Hd, Self - Tap, #8-18 x 1/2 | 10  |
| 153      | Decal - CE Marking                      | 1   |

## Optional Mast Light

| REF. NO. | DESCRIPTION                       | QTY |
|----------|-----------------------------------|-----|
| 47       | Hex hd Screw, 5/16-18 x 3/4 in.   | 3   |
| 48       | Lock Washer, 1/4 in.              | 1   |
| 63       | Nylok Nut, 5/16-18                | 1   |
| 97       | Nylok Nut, 1/4-20                 | 4   |
| 110      | Oval hd Screw, 1/4-20 x 1-1/2 in. | 2   |
| 112      | Mast Light                        | 1   |

| REF. NO. | DESCRIPTION            | QTY |
|----------|------------------------|-----|
| 114      | Rubber Grommet         | 1   |
| 123      | Mast Light Base        | 1   |
| 124      | Mast Bracket           | 1   |
| 125      | Telescoping Mast       | 1   |
| 127      | 12 Volt / 50 Watt Bulb | 1   |



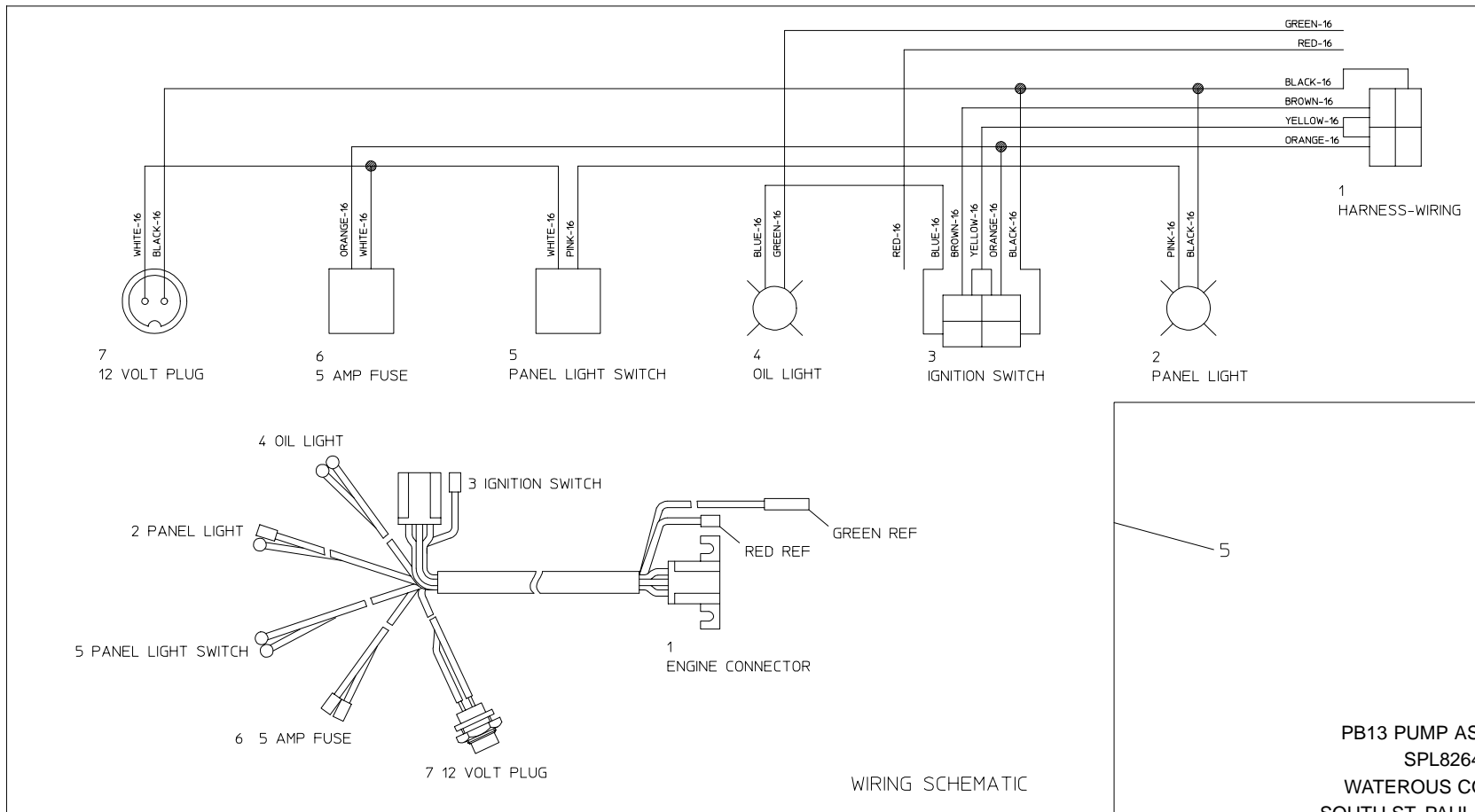
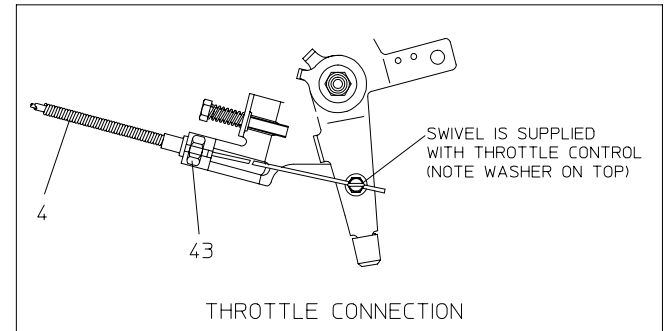
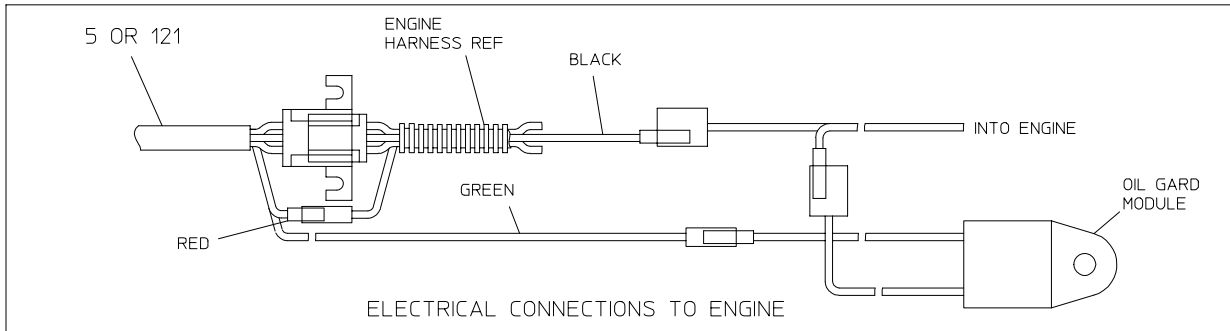


**OPTIONAL MAST LIGHT** PB13 PUMP ASSEMBLY  
 SPL82644  
 WATEROUS COMPANY  
 SOUTH ST. PAUL, MN 55075  
 PAGE 15 OF 17

## Wiring Schematic

| REF. NO. | DESCRIPTION      | QTY |
|----------|------------------|-----|
| 4        | Throttle Control | 1   |
| 5        | Wiring Harness   | 1   |

| REF. NO. | DESCRIPTION       | QTY |
|----------|-------------------|-----|
| 43       | Hex Nut, 1/4-20   | 1   |
| 121      | Harness Extension | 1   |



**WATEROUS**

125 Hardman Avenue South, South St. Paul, Minnesota 55075-2456 USA (651) 450-5000