

Tank to Pump Valve with Electric Rotary Actuator Service Parts List

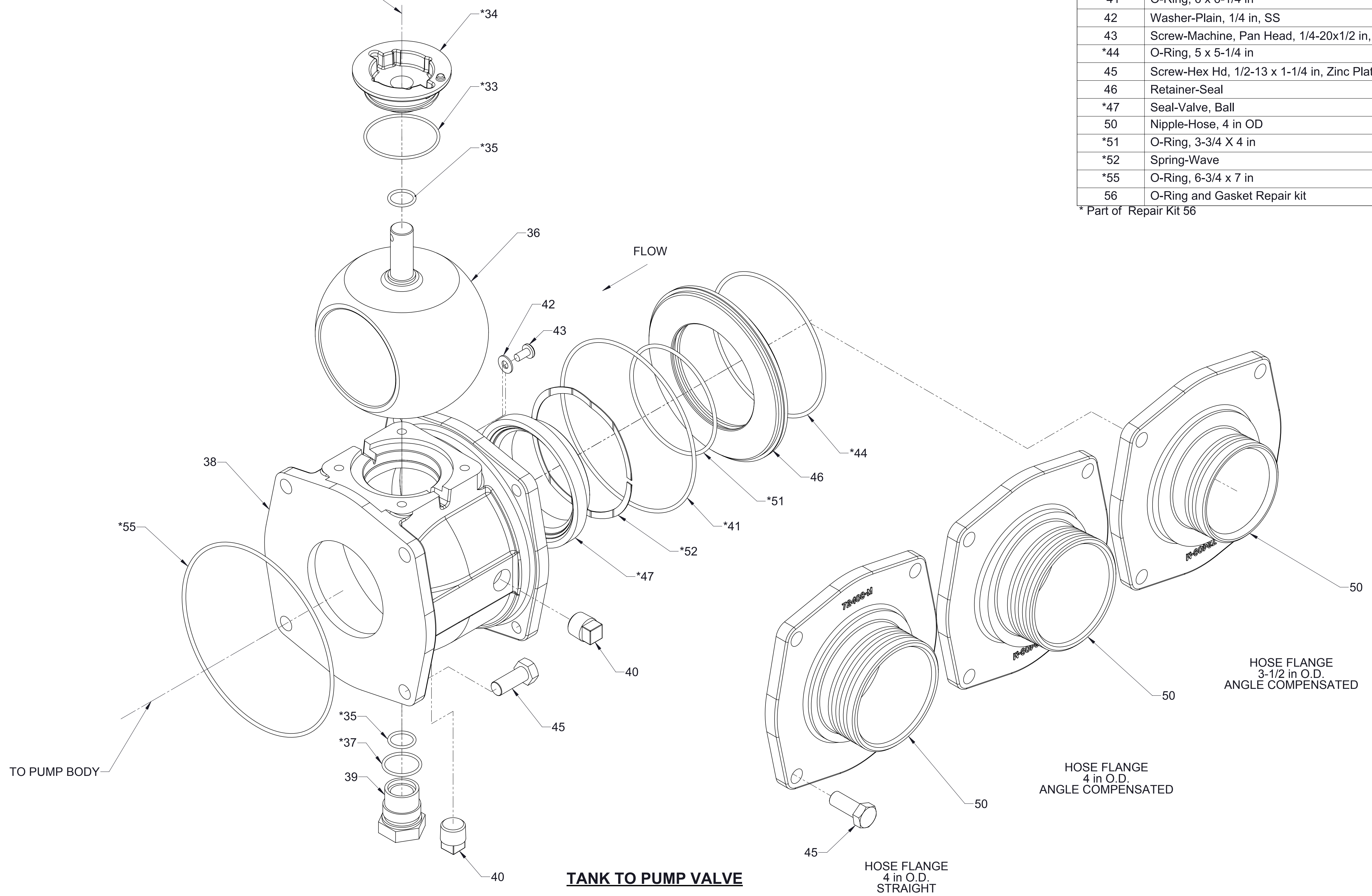
Components	See Page
Tank to Pump Valve	2
Electric Rotary Actuator	3
Cables and Panel Components	4
Available Repair Subassemblies	5

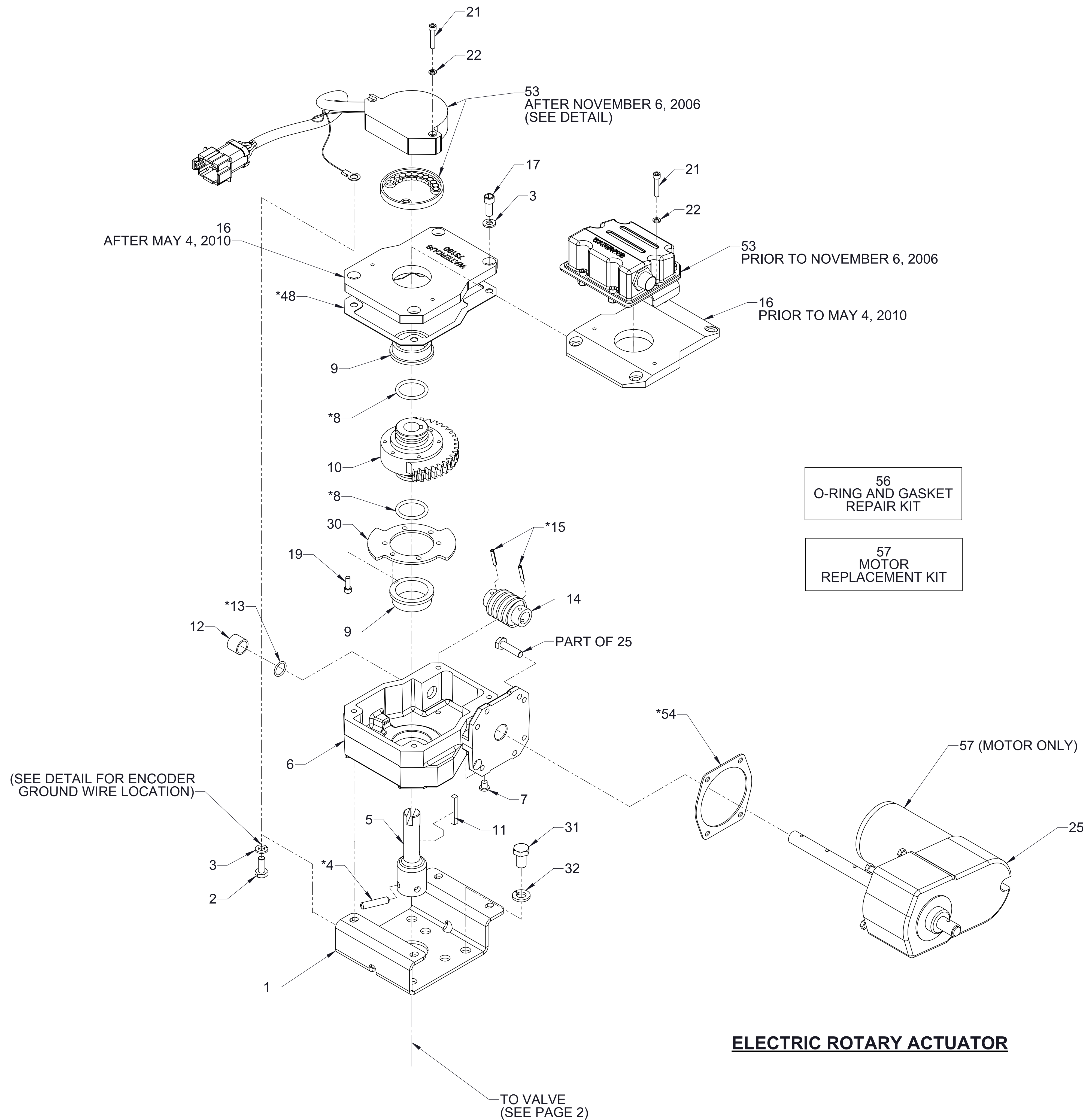
REF NO.	DESCRIPTION
*33	O-Ring, 2-5/16 x 2-1/2 in
*34	Bushing-Upper Stem
*35	O-Ring, 3/4 x 15/16 in
36	Valve-Ball
*37	O-Ring, UL, 1-1/8 x 1-5/16 in
38	Body-Valve
39	Plug-Pivot, Ball Valve
40	Plug-Pipe, Square Hd, 1/2 NPT, Steel
*41	O-Ring, 6 x 6-1/4 in
42	Washer-Plain, 1/4 in, SS
43	Screw-Machine, Pan Head, 1/4-20x1/2 in, SS
*44	O-Ring, 5 x 5-1/4 in
45	Screw-Hex Hd, 1/2-13 x 1-1/4 in, Zinc Plated
46	Retainer-Seal
*47	Seal-Valve, Ball
50	Nipple-Hose, 4 in OD
*51	O-Ring, 3-3/4 X 4 in
*52	Spring-Wave
*55	O-Ring, 6-3/4 x 7 in
56	O-Ring and Gasket Repair kit

* Part of Repair Kit 56

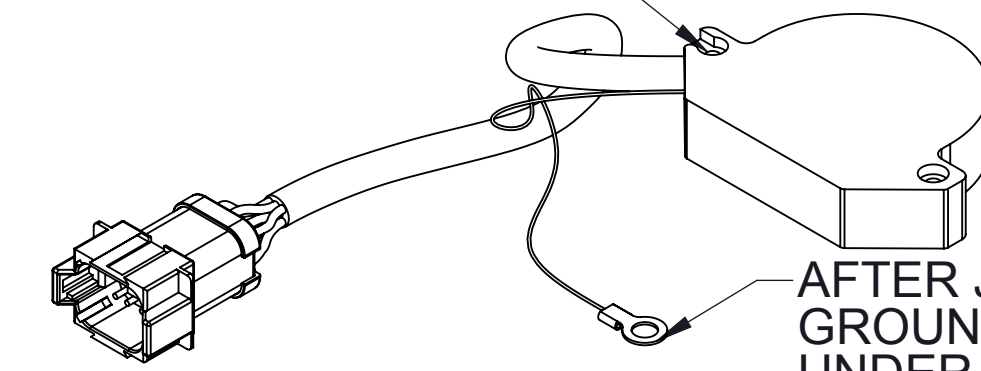
56
O-RING AND GASKET
REPAIR KIT

TO ROTARY ACTUATOR
SEE PAGE 3



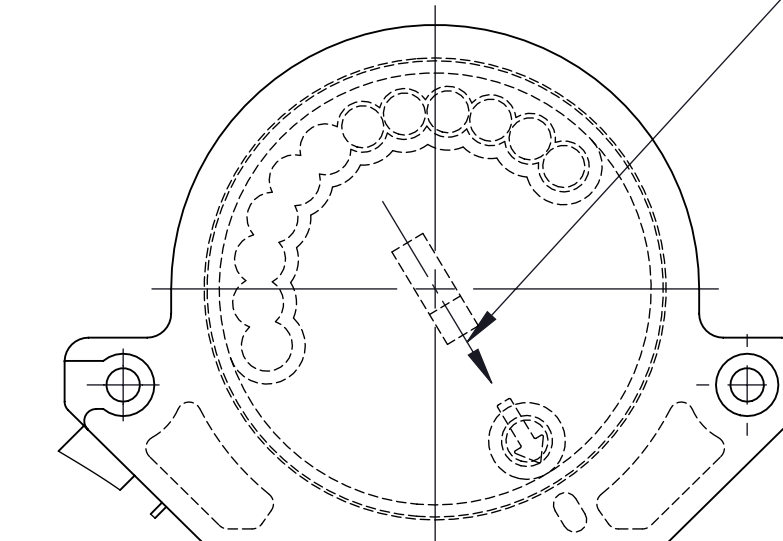


PRIOR TO JANUARY 7, 2008
GROUND WIRE INSTALLED
UNDER HEAD OF ENCODER
MOUNTING SCREW.

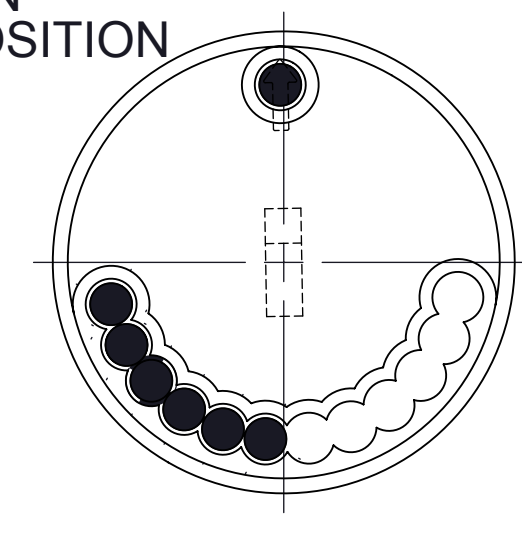


AFTER JANUARY 7, 2008
GROUND WIRE INSTALLED
UNDER HEAD OF BRACKET
MOUNTING SCREW.
(SEE ASSEMBLY DETAIL)

ENCODER GROUND WIRE DETAIL



**ROTOR POSITION
(VIEWED FROM TOP)**



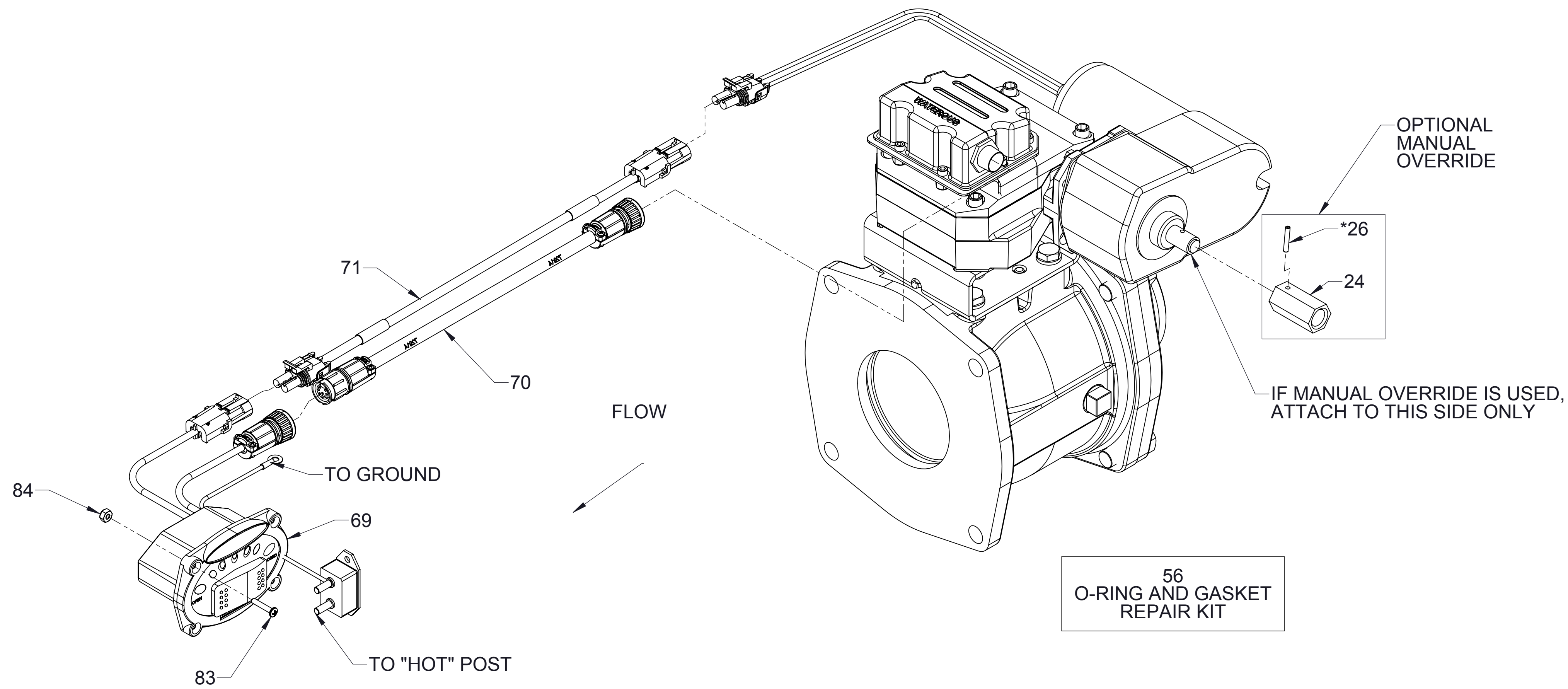
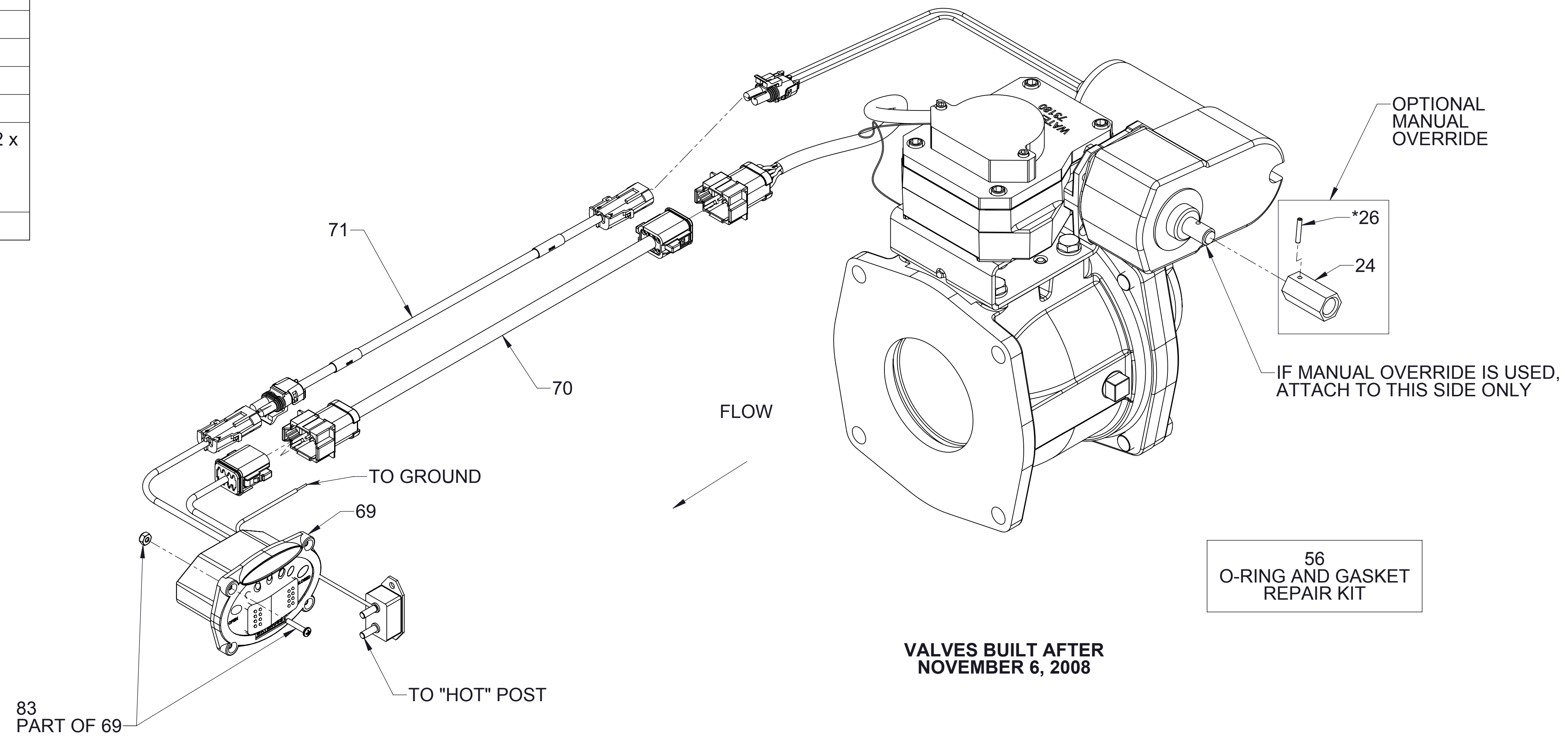
**ROTOR MAGNET
POSITIONS**

REF NO.	DESCRIPTION
1	Bracket-Mounting
2	Screw-Hex Hd, 1/4-20 x 5/8 in, Zinc Plated
3	Washer-Lock, 1/4 in, Zinc Plated
*4	Pin-Spring, 1/4 x 1-1/8 in, SS
5	Shaft-Extension
6	Housing-Actuator (Includes 9, 12, 13)
7	Plug-Rubber
*8	O-Ring, UL, 1 x 1-1/4 in
9	Bearing-Flange
10	Gear-Worm, Sector
11	Key-Square, 3/16 x 1-1/4 in, SS
12	Bearing-Sleeve, 1/2 x 5/8 in
*13	O-Ring, 1/2 x 5/8 in
14	Gear-Worm
*15	Pin-Spirol, 1/8 X 3/4 in, Heavy, SS
16	Cover-Actuator (Includes 9)
17	Screw-Cap, Hex Socket Hd, 1/4-20 x 5/8 in
19	Screw-Cap, Hex Socket Hd, 8-32 x 1/2 in
21	Screw-Cap, Hex Socket Hd, 8-32 x 7/8 in
22	Washer-Lock, Med-Spring, No.8, Zinc Plated
25	Motor-Gear
30	Disc-Limit
31	Screw-Hex Head, 3/8-16 X 5/8 in, Zinc Plated
32	Washer-Lock, 3/8 in, Zinc Plated
*48	Gasket-Housing, Actuator
53	Encoder-Rotary, 90° (After November 6, 2006) Rotary Switch Assembly (Prior to November 6, 2006)
*54	Motor-Gear, Gasket
56	O-Ring and Gasket Repair Kit
57	Motor Replacement Kit

* Part of Repair Kit 56

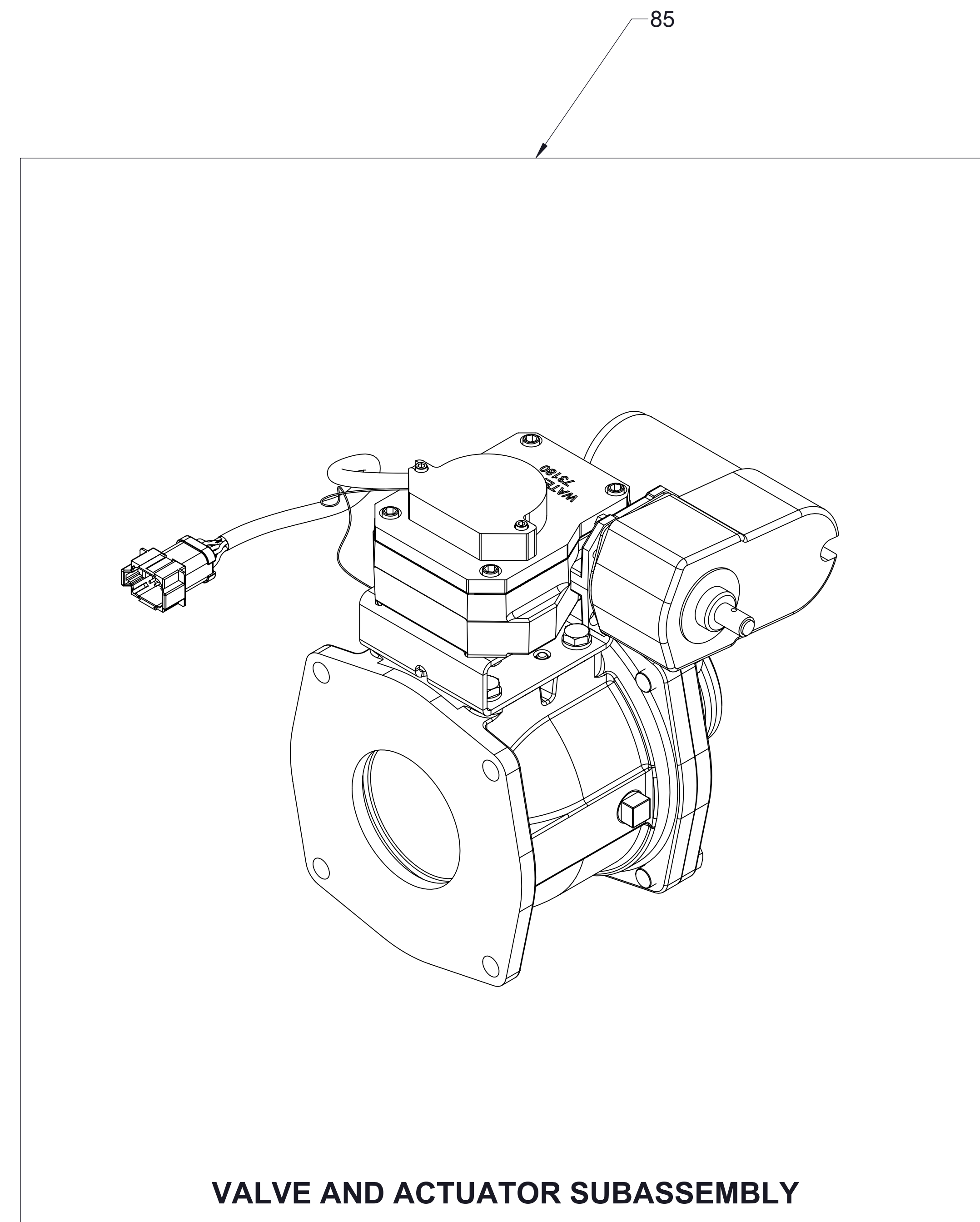
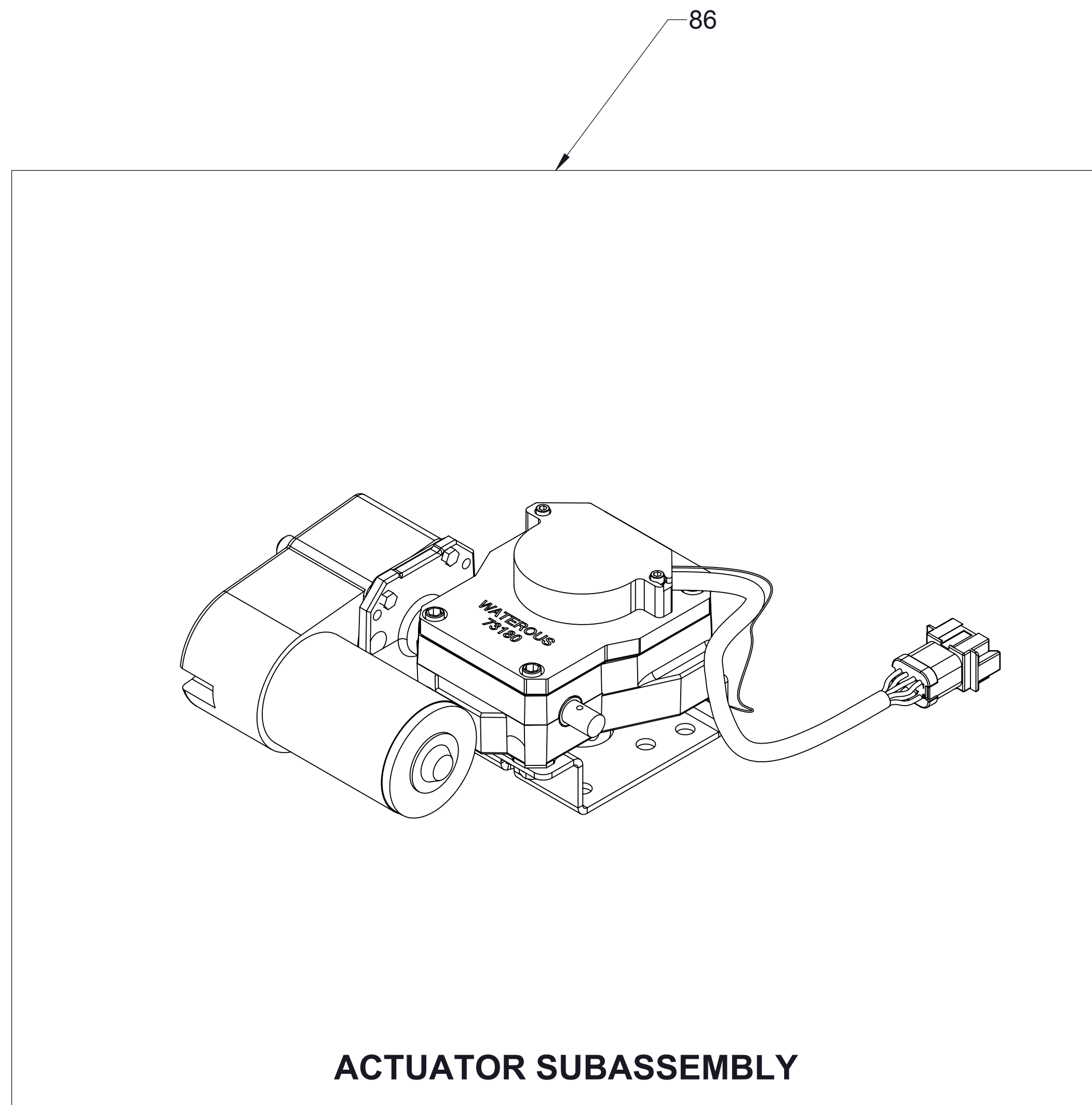
REF NO.	DESCRIPTION
24	Nut-Adapter
*26	Pin-Spirol, 1/8 X 3/4 in, Heavy, SS
56	O-Ring and Gasket Repair Kit
69	Panel Assembly-Control, Electric
70	Cable-Extension, Encoder
71	Wire-Motor Extension
83	Control Panel Mounting Hardware (Includes (4) Screw - Machine, Pan Head, 6-32 x 3/4 in, SS and (4) Nut-Hex, Nylok, 6-32, SS) (After November 6, 2006) Screw - Machine, Pan Head, 6-32 x 3/4 in, SS (Prior to November 6, 2006)
84	Nut-Hex, Nylok, 6-32, SS (Prior to November 6, 2006)

* Part of Repair Kit 56



CABLE AND PANEL COMPONENTS

REF NO.	DESCRIPTION
85	Valve with Electric Rotary Actuator Subassembly
86	Actuator Subassembly



AVAILABLE REPAIR SUBASSEMBLIES