



TC10 Series P.T.O. Service Parts List
(Used with Eclipse ES CAFS)

Components			See Page	
Case Assembly	Viewed from Input Side		1, 2	
	Viewed from Output Side		3, 4	
	Spacers and Shims		5, 6	
	Hardware	Lower Section of Case		7, 8
		Between Cap and Case	Model TC10B	9, 10
			Model TC10C	11, 12
Model TC10D, TC10E, TC10F	13, 14			
Driveline	Input and Output Shaft		15, 16	
	Input Shaft Only		17, 18	
Output Shaft	Single Output to the Rear (Output Shaft Side) (See Service Parts List SPL82654 for Eclipse ES Air Compressor)		19, 20	

Note: When ordering parts please supply P.T.O. serial number.

Case Assembly – Input Side of Case

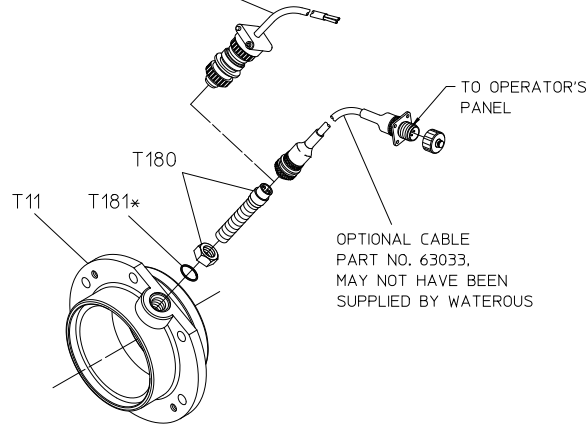
REF NO.	DESCRIPTION
T9	Lock Washer, M10
T11	Drive Shaft Housing
T27	Breather, 1/2 NPT
T28	Chain Case Assembly
T46	Shift Shaft
T51	Heavy Spirol Pin, 5/16 x 1-3/8 in.
T58	Magnetic Drain Plug, 3/4-16 (Includes O-ring T181)
T59	Spring Housing
T60	Heavy Spirol Pin, 1/4 x 1-1/4 in.
T61	Shift Lock Spring
T62	Shift Arm

REF NO.	DESCRIPTION
T65	Case Cap
T99	Spacer (.010, .025, .031)
T100	Spacer
T135	Hex Hd Screw, M10 x 25 mm
T136	Hex Hd Screw, M10 x 20 mm
T141	Gasket Repair Kit
T180	Magnetic Tach Pickup
T181	O-ring, 5/8 x 3/4 in.
T245	O-ring, 5-1/4 x 5-1/2 in.
T246	Socket Hd Screw, M10 x 25 mm
T253	Set Screw, 5/8-18 x 5/8 in.
T254	V-ring Seal

Hardware Torque Specifications:

Screw Size	Torque Specifications
M10	36-40 lb-ft
M12	64-69 lb-ft

OPTIONAL CABLE
PART NO. V 3398.
MAY NOT HAVE BEEN
SUPPLIED BY WATEROUS



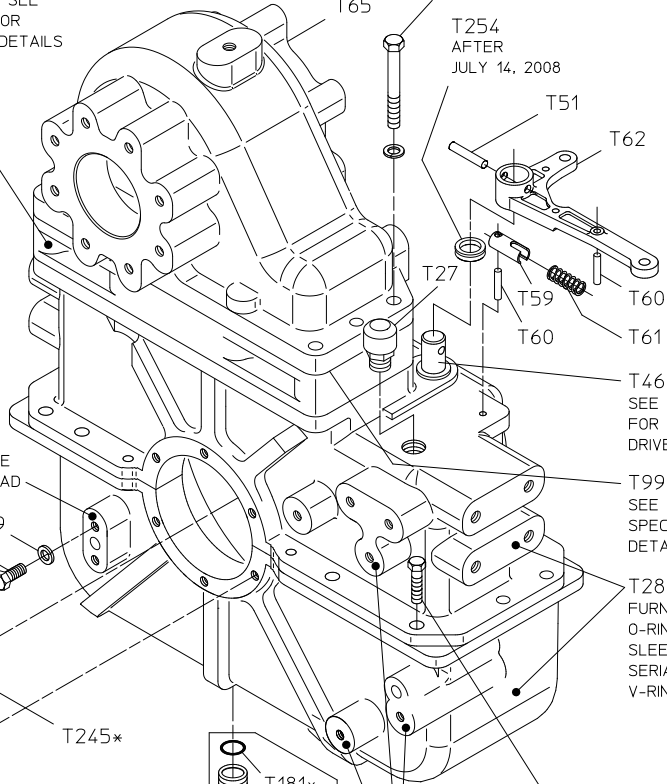
OPTIONAL CABLE
PART NO. 63033.
MAY NOT HAVE BEEN
SUPPLIED BY WATEROUS

OPTIONAL ELECTRONIC
TACHOMETER

T100
CONFIGURATION SHOWN
FOR MODEL TC10C. SEE
PAGES 5 AND 6 FOR
SPECIFIC SPACER DETAILS

SEE PAGES 9 THROUGH 14
FOR FLANGE HARDWARE

T254
AFTER
JULY 14, 2008



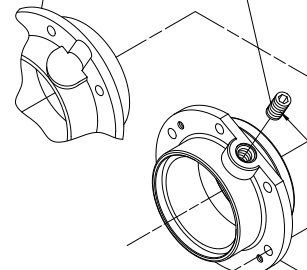
SEE PAGES 15 AND 18
FOR SPECIFIC
DRIVELINE DETAILS

SEE PAGES 5 AND 6 FOR
SPECIFIC SPACER
DETAILS

T28
FURNISHED WITH PIVOT PIN (T37),
O-RINGS (T39 & T49), SPIROL PIN (T60),
SLEEVE BEARINGS (T112 & T190),
SERIAL PLATE (T139), DRIVE SCREWS (T140),
V-RING SEAL (T254) AND FLANGE BEARING (T255)

T11
PRIOR TO
MARCH 28, 2008

T253
AFTER
MARCH 28, 2008



DRAIN VALVE
MOUNTING PAD

APPLY LOCTITE #242
(BLUE) TO THREADS

SEE PAGES 7 AND 8 FOR CASE
FLANGE HARDWARE

PRIMING PUMP
MOUNTING PADS

T141
GASKET AND
SHIM REPAIR KIT

*PART OF T141 GASKET
AND SHIM REPAIR KIT

CASE ASSEMBLY - INPUT SIDE OF CASE

C DROP SHOWN (MODEL TC10C)

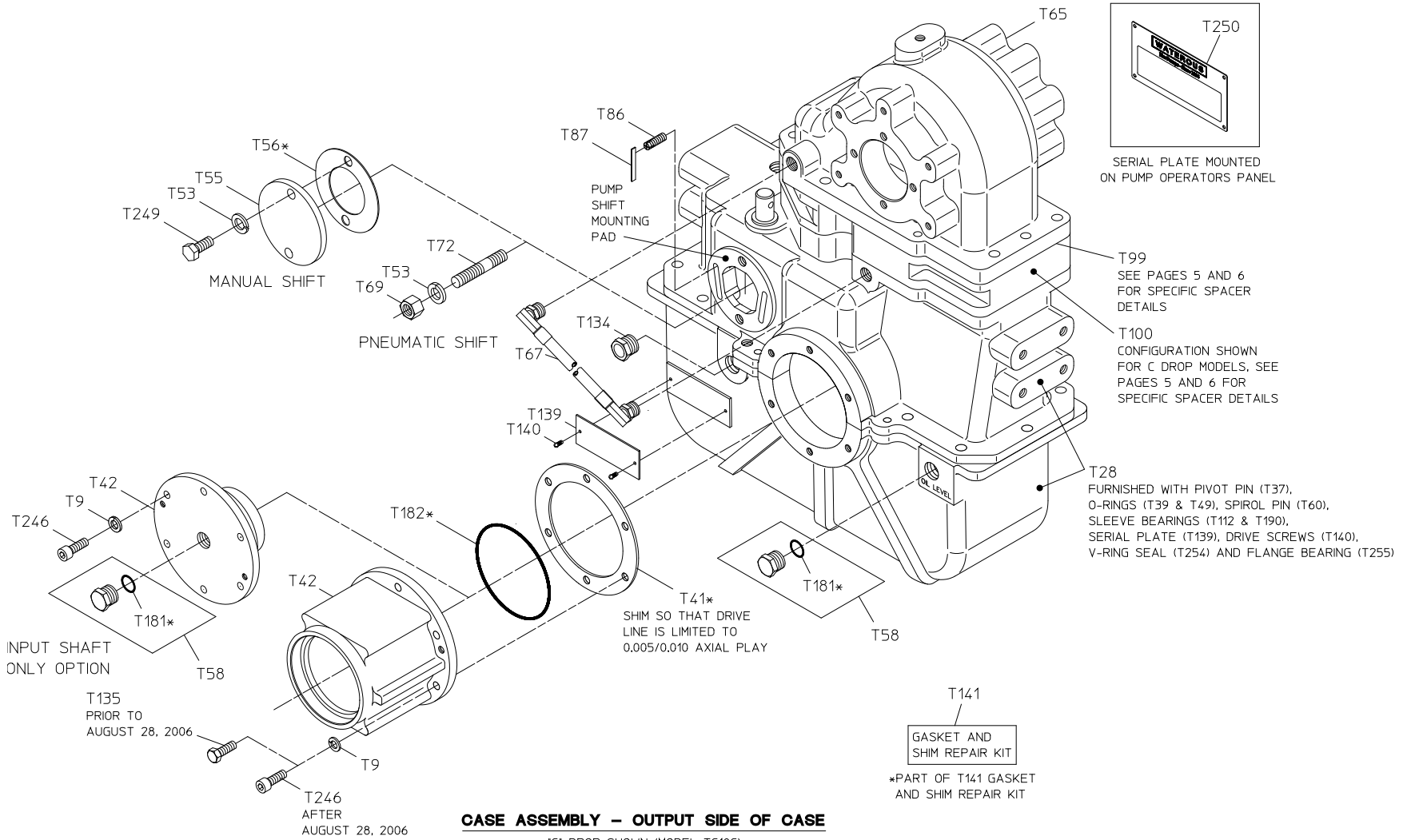
Case Assembly – Output Side of Case

REF NO.	DESCRIPTION
T9	Lock Washer, M10
T28	Chain Case Assembly
T41	Aluminum Shim (.005, .007, .010)
T42	Coupling Shaft Housing
T53	Lock Washer, M12
T55	Shift Cover
T56	Shift Cover Gasket
T58	Magnetic Drain Plug, 3/4-16 (Includes O-ring T181)
T65	Case Cap
T67	Hose
T69	Hex Nut, M12
T72	Threaded Stud, M12 x 35 mm
T86	Adjusting Screw
T87	Adjusting Screw Retainer

REF NO.	DESCRIPTION
T99	Spacer (.010, .025, .031)
T100	Spacer
T134	Sight Plug
T135	Hex Hd Screw, M10 x 25 mm
T139	Serial Plate
T140	Round Hd Screw, No. 6 x 1/4 in.
T141	Gasket Repair Kit
T181	O-ring, 5/8 x 3/4 in.
T182	O-ring, 4-3/4 x 5 in.
T246	Socket Hd Screw, M10 x 25 mm
T249	Hex Hd Screw, M12 x 25 mm
T250	Operator;s Panel Serial Plate

Hardware Torque Specifications:

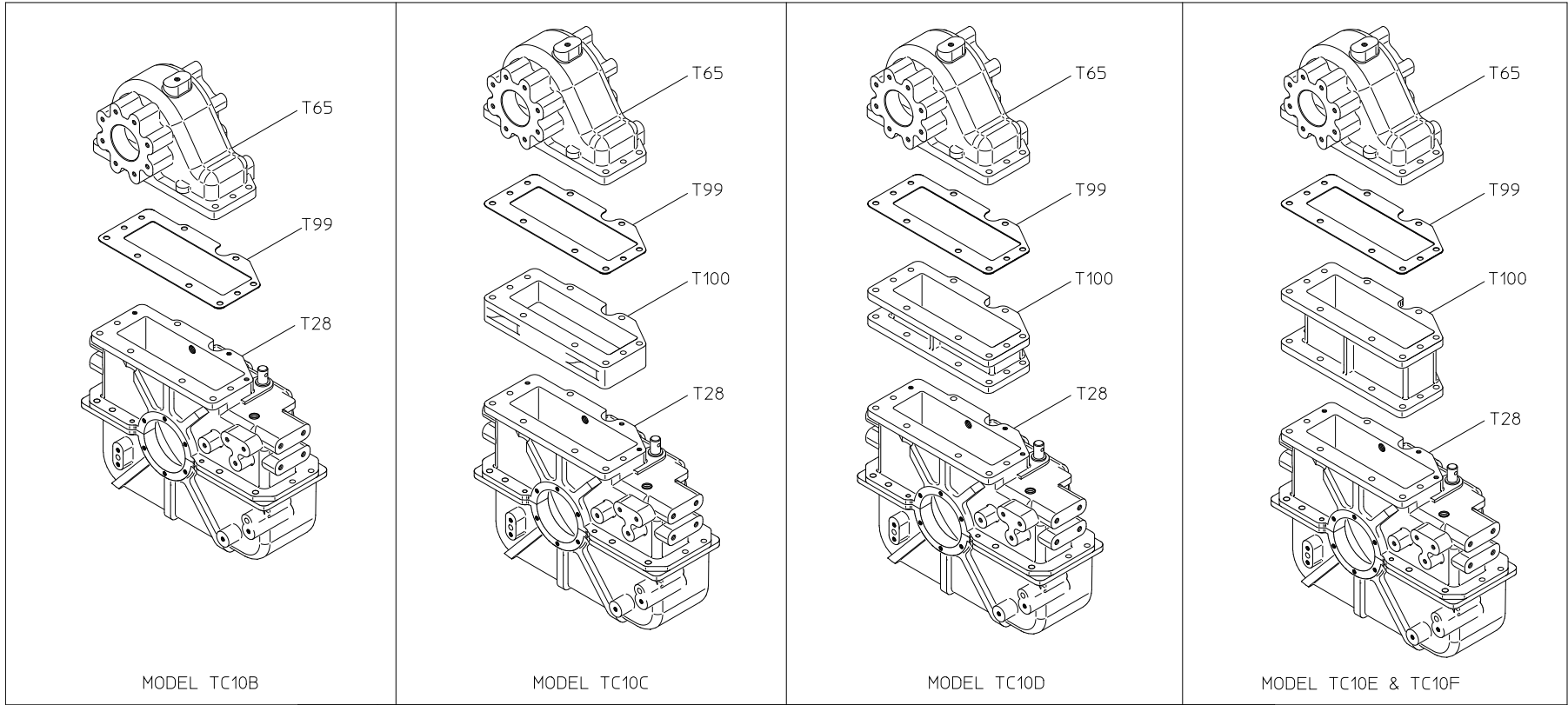
Screw Size	Torque Specifications
M10	36-40 lb-ft
M12	64-69 lb-ft



Case Assembly – Spacers and Shims

REF NO.	DESCRIPTION
T28	Chain Case Assembly
T65	Case Cap

REF NO.	DESCRIPTION
T99	Spacer (.010, .025, .031)
T100	Spacer



RATIOS	QTY OF T99 SHIMS														
	MODEL TC10B			MODEL TC10C			MODEL TC10D			MODEL TC10E			MODEL TC10F		
	.010 BROWN	.025 WHITE	.031 ORANGE	.010 BROWN	.025 WHITE	.031 ORANGE	.010 BROWN	.025 WHITE	.031 ORANGE	.010 BROWN	.025 WHITE	.031 ORANGE	.010 BROWN	.025 WHITE	.031 ORANGE
1.58	0	0	0	2	0	0	1	1	0	0	1	0	0	0	0
1.69	5	0	0	0	0	0	0	1	0	0	1	3	0	4	0
1.79	0	0	2	0	0	0	1	0	0	2	1	1	1	1	1
1.88	2	0	0	0	0	0	0	1	0	1	1	1	0	1	1
1.97	1	1	1	0	0	1	0	1	1	0	2	0	2	1	0
2.03	0	0	0	1	1	0	0	0	2	1	1	0	3	0	0
2.27	0	0	0	0	3	0	0	0	0	0	0	0	0	0	0

CASE ASSEMBLY – SPACERS AND SHIMS

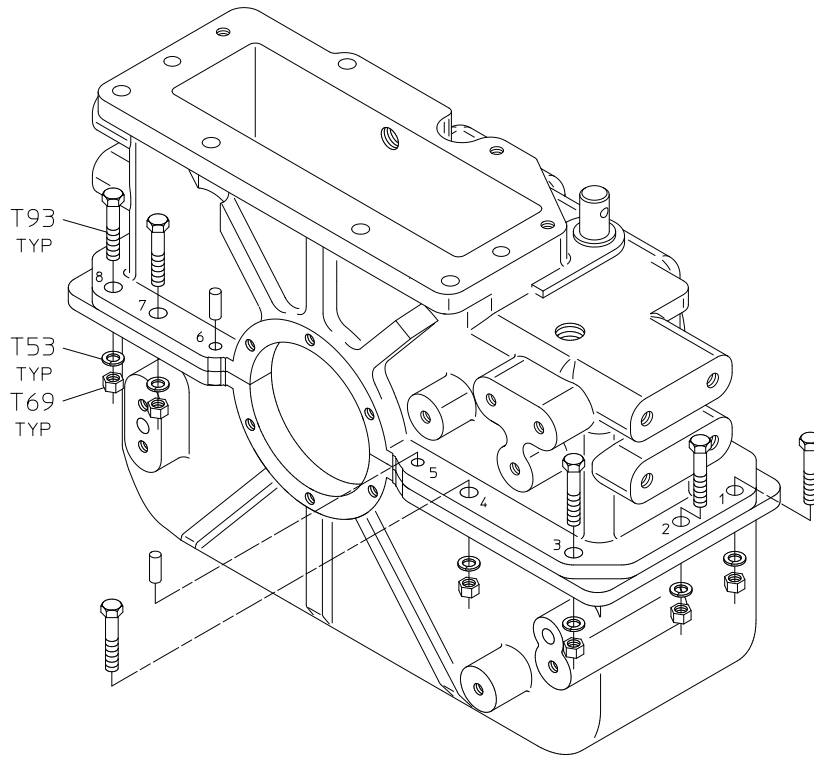
Case Hardware – Lower Section

REF NO.	DESCRIPTION
T53	Lock Washer, M12
T69	Hex Nut, M12
T71	Hex Hd Screw, M12 x 60 mm
T99	Spacer (.010, .025, .031)

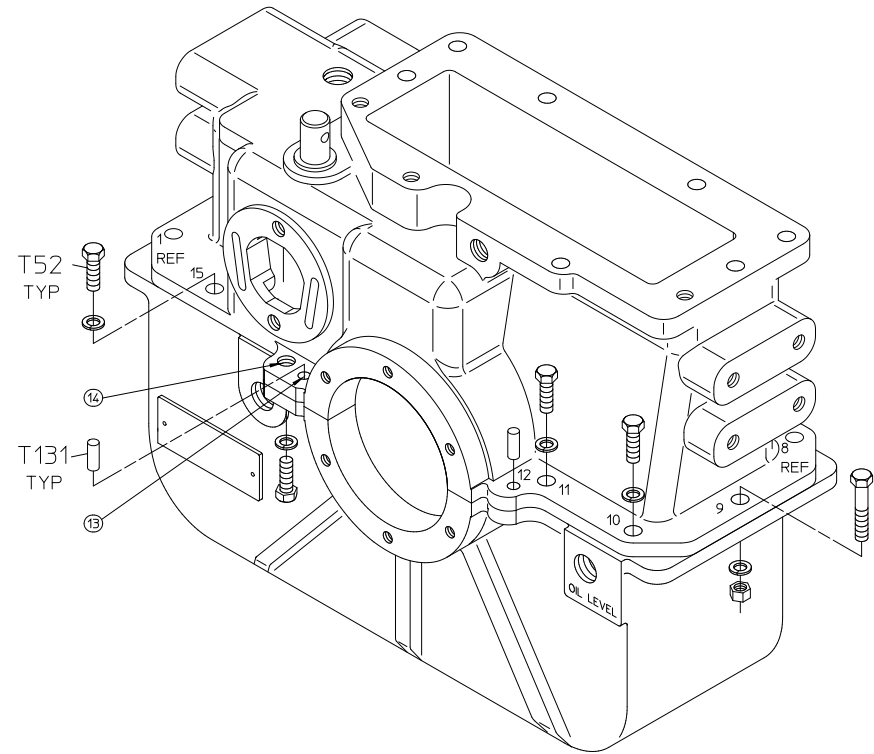
REF NO.	DESCRIPTION
T103	Dowel Pin, 1/2 x 1-1/2 in.
T240	Hex Hd Screw, M12 x 40 mm

Hardware Torque Specifications:

Screw Size	Torque Specifications
M10	36-40 lb-ft
M12	64-69 lb-ft



INPUT SIDE OF CASE



OUTPUT SIDE OF CASE

CASE FLANGE HARDWARE

REF NO.	HARDWARE DESCRIPTION	HOLE NUMBER															QTY
		1	2	3	4	5	6	7	8	9	10	11	12	13	14	15	
T52	HEX HD SCREW, M12 X 30mm										1	1			1	1	4
T53	LOCK WASHER, M12	1	1	1	1			1	1	1	1	1			1	1	11
T69	HEX NUT, M12	1	1	1	1			1	1	1							7
T93	HEX HD SCREW, M12 X 45mm	1	1	1	1			1	1	1							7
T131	DOWEL PIN, 3/8 X 1"					1	1						1	1			4

CASE HARDWARE – LOWER SECTION

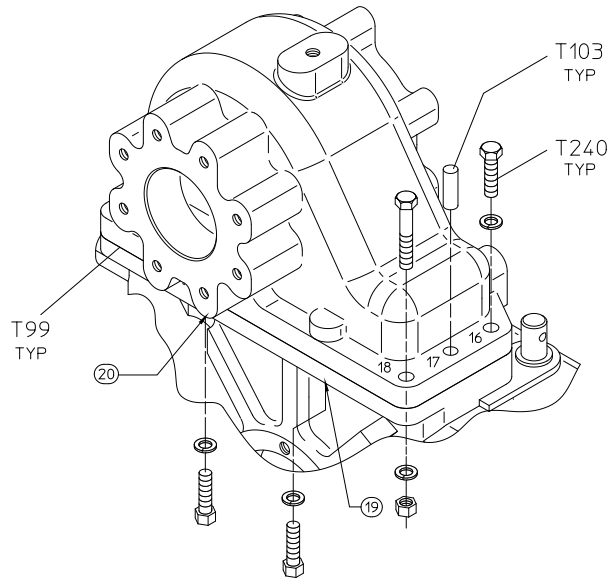
Case Hardware – Between Cap and Case, Model TC10B

REF NO.	DESCRIPTION
T53	Lock Washer, M12
T69	Hex Nut, M12
T71	Hex Hd Screw, M12 x 60 mm

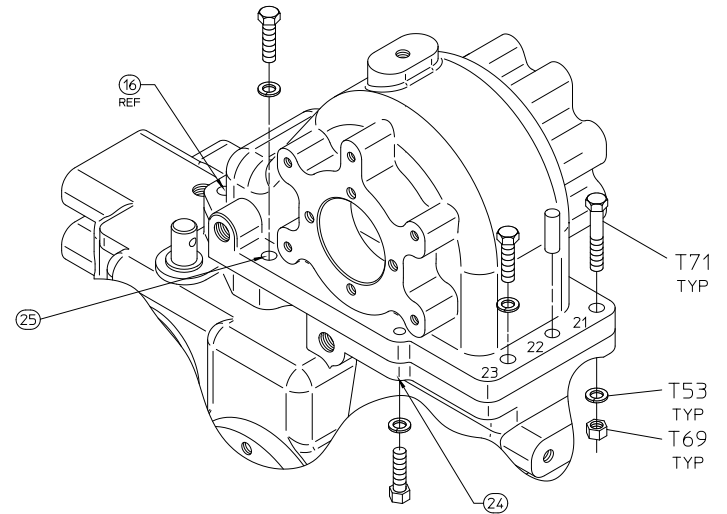
REF NO.	DESCRIPTION
T99	Spacer (.010, .025, .031)
T103	Dowel Pin, 1/2 x 1-1/2 in.
T240	Hex Hd Screw, M12 x 40 mm

Hardware Torque Specifications:

Screw Size	Torque Specifications
M10	36-40 lb-ft
M12	64-69 lb-ft



INPUT SIDE OF CASE



OUTPUT SIDE OF CASE

FLANGE HARDWARE BETWEEN CAP (T65) AND CASE (T28)

REF NO.	HARDWARE DESCRIPTION	HOLE NUMBER										QTY
		16	17	18	19	20	21	22	23	24	25	
T53	LOCKWASHER, M12	1		1	1	1	1		1	1	1	8
T69	HEX NUT, M12			1			1					2
T71	HEX HD SCREW, M12 X 60mm			1			1					2
T103	DOWEL PIN, 1/2 X 1 1/2		1					1				2
T240	HEX HD SCREW, M12 X 40mm	1			1	1			1	1	1	6

NOTE:
HOLES 19, 20 AND 24 ARE BLIND HOLES THAT ARE TAPPED INTO THE CAP AND ARE NOT SHOWN.

CASE HARDWARE – BETWEEN CAP AND CASE, MODEL TC10B

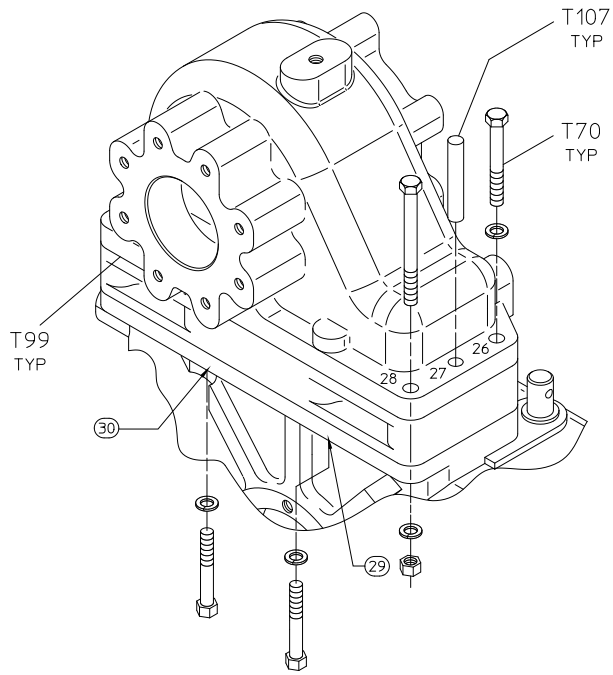
Case Hardware – Between Cap and Case, Model TC10C

REF NO.	DESCRIPTION
T53	Lock Washer, M12
T68	Hex Hd Screw, M12 x 100 mm
T69	Hex Nut, M12
T70	Hex Hd Screw, M12 x 90 mm

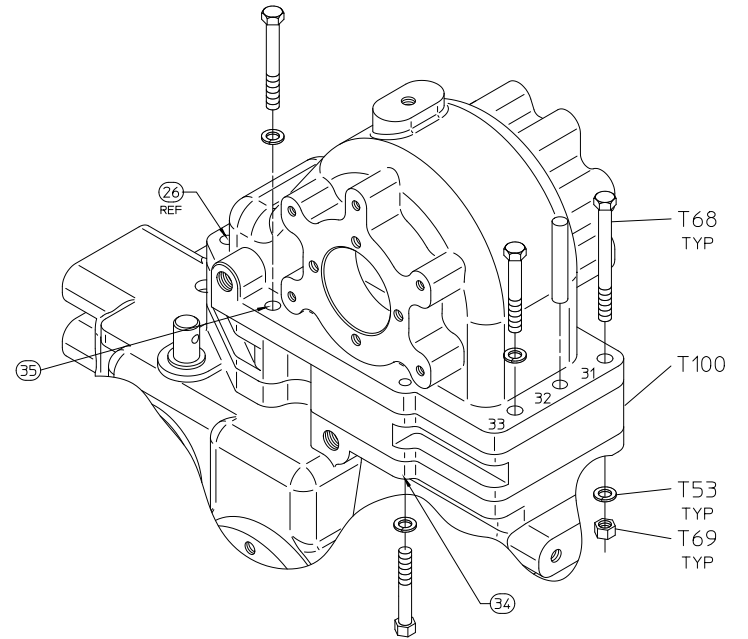
REF NO.	DESCRIPTION
T99	Spacer (.010, .025, .031)
T100	Spacer
T107	Dowel Pin, 1/2 x 3 in.

Hardware Torque Specifications:

Screw Size	Torque Specifications
M10	36-40 lb-ft
M12	64-69 lb-ft



INPUT SIDE OF CASE



OUTPUT SIDE OF CASE

FLANGE HARDWARE BETWEEN CAP (T65) AND CASE (T28)

REF NO.	HARDWARE DESCRIPTION	HOLE NUMBER										QTY	
		26	27	28	29	30	31	32	33	34	35		
T53	LOCKWASHER, M12	1		1	1	1	1			1	1	1	8
T68	HEX HD SCREW, M12 X 100mm			1			1						2
T69	HEX NUT, M12			1			1						2
T70	HEX HD SCREW, M12 X 90mm	1			1	1				1	1	1	6
T107	DOWEL PIN, 1/2 X 3		1							1			2

NOTE:
HOLES 29, 30 AND 34 ARE BLIND HOLES THAT ARE TAPPED INTO THE CAP AND ARE NOT SHOWN.

CASE HARDWARE – BETWEEN CAP AND CASE, MODEL TC10C

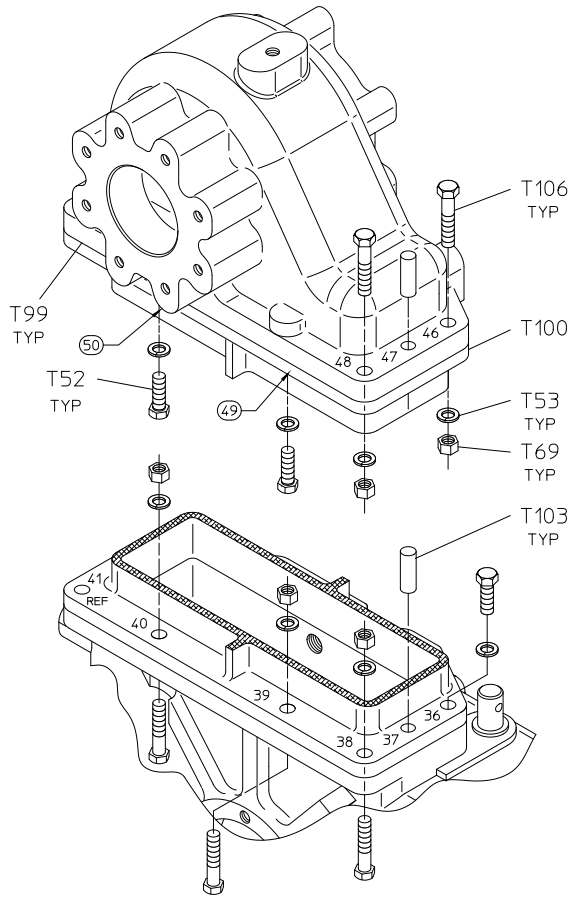
Case Hardware – Between Cap and Case, Models TC10D, TC10E & TC10F

REF NO.	DESCRIPTION
T52	Hex Hd Screw, M12 x 30 mm
T53	Lock Washer, M12
T69	Hex Nut, M12
T99	Spacer (.010, .025, .031)

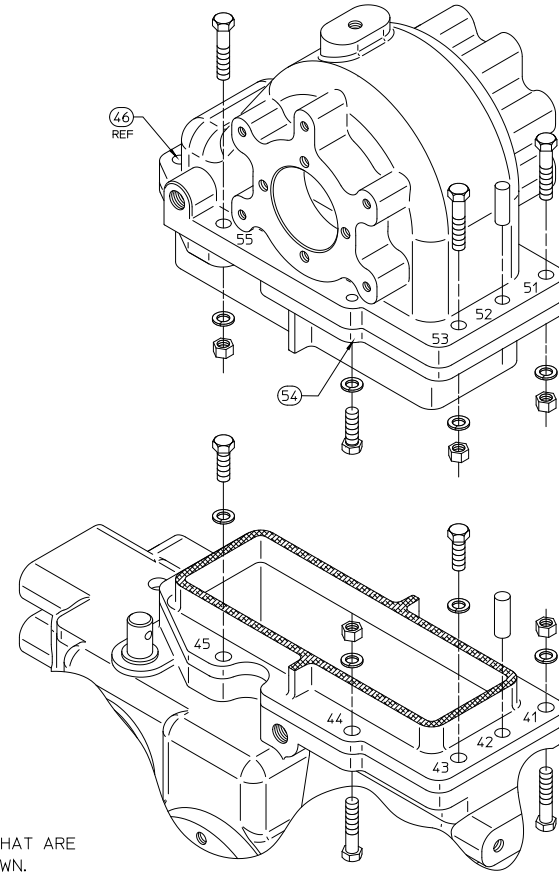
REF NO.	DESCRIPTION
T100	Spacer
T103	Dowel Pin, 1/2 x 1-1/2 in.
T106	Hex Hd Screw, M12 x 50 mm

Hardware Torque Specifications:

Screw Size	Torque Specifications
M10	36-40 lb-ft
M12	64-69 lb-ft



INPUT SIDE OF CASE



OUTPUT SIDE OF CASE

NOTE:
HOLES 49, 50 AND 54 ARE BLIND HOLES THAT ARE
TAPPED INTO THE CAP AND ARE NOT SHOWN.

FLANGE HARDWARE BETWEEN CAP (T65) AND CASE (T28)

REF NO.	HARDWARE DESCRIPTION	HOLE NUMBER															QTY					
		36	37	38	39	40	41	42	43	44	45	46	47	48	49	50		51	52	53	54	55
T52	HEX HD SCREW, M12 X 30mm	1							1	1				1	1					1		6
T53	LOCKWASHER, M12	1		1	1	1	1		1	1	1	1		1	1	1		1	1	1	1	16
T69	HEX NUT, M12			1	1	1	1			1	1	1		1				1	1	1	1	10
T103	DOWEL PIN, 1/2 X 1-1/2		1					1				1								1		4
T106	HEX HD SCREW, M12 X 50mm			1	1	1	1			1		1	1				1	1		1	1	10

CASE HARDWARE – BETWEEN CAP AND CASE, MODELS TC10D, TC10E & TC10F

Driveline – Input and Output Shaft

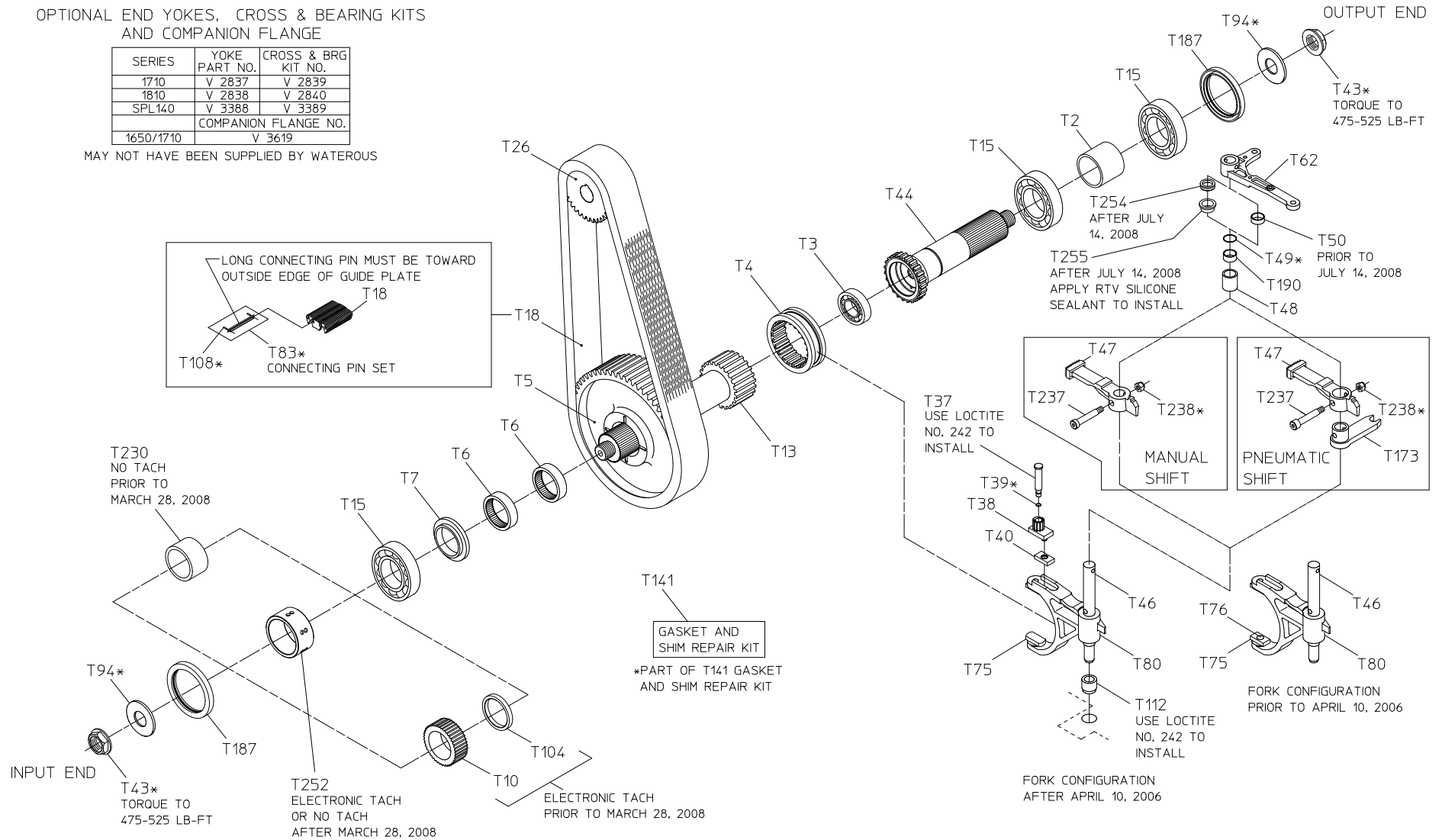
REF NO.	DESCRIPTION
T2	Shaft Coupling Spacer
T3	Ball Bearing
T4	Shift Collar
T5	Drive Sprocket
T6	Needle Bearing
T7	Thrust Washer
T10	Tachometer Pulse Generator
T13	Drive Shaft
T15	Ball Bearing
T18	Chain
T26	Driven Sprocket
T37	Pivot Pin, 5/8 x 2-3/4 in.
T38	Locking Arm
T39	O-ring, 1/4 x 3/8 in.
T40	Shifter Shoe
T43	Self Locking Nut, 1-1/4-18
T44	Coupling Shaft
T46	Shift Shaft
T47	Sector Gear
T48	Sector Spacer

REF NO.	DESCRIPTION
T49	O-ring, 7/8 x 1 in.
T50	Sleeve Bearing
T62	Shift Arm
T75	Shifter Shoe
T76	Shifter Shoe Stud
T80	Shift Fork Subassembly
T83	Connecting Pin Set
T94	Plain Washer, 1-1/4 in.
T104	Drive Shaft Spacer
T108	Spirol Pin, 1/16 x 1/4 in.
T112	Sleeve
T141	Gasket Repair Kit
T173	Shift Lever
T187	Oil Seal, 3-1/2 x 4-3/8 in.
T190	Sleeve Bearing
T230	Drive Shaft Spacer
T237	Shoulder Screw, 3/8 x 1-3/4 in.
T238	Lock Nut, 5/16-18
T254	V-ring Seal
T255	Flanged Bearing

OPTIONAL END YOKES, CROSS & BEARING KITS
AND COMPANION FLANGE

SERIES	YOKE PART NO.	CROSS & BRG KIT NO.
1710	V 2837	V 2839
1810	V 2838	V 2840
SPL140	V 3388	V 3389
COMPANION FLANGE NO.		
1650/1710	V 3619	

MAY NOT HAVE BEEN SUPPLIED BY WATEROUS



DRIVELINE – INPUT AND OUTPUT SHAFT

Driveline – Input and Shaft Only

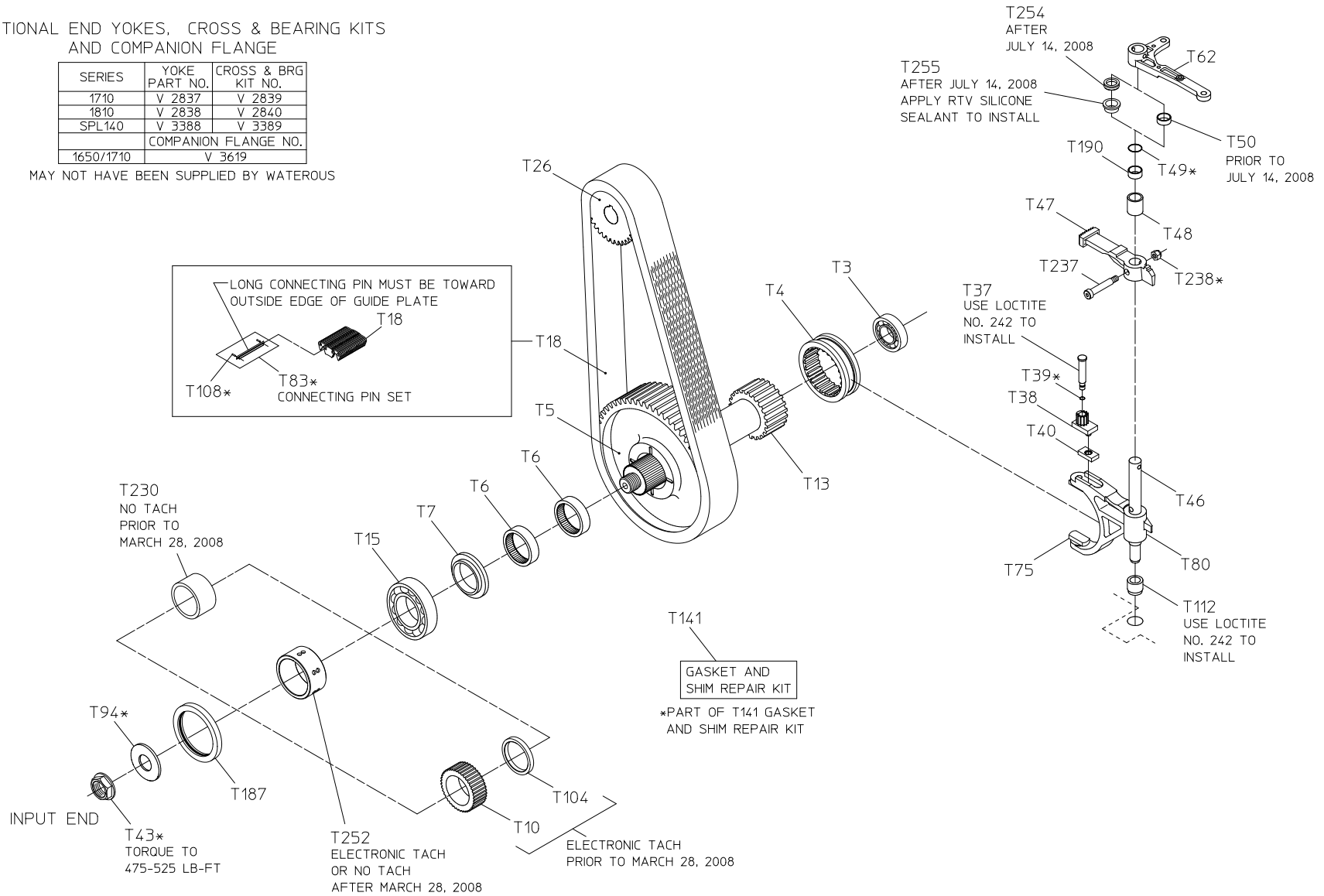
REF NO.	DESCRIPTION
T3	Ball Bearing
T4	Shift Collar
T5	Drive Sprocket
T6	Needle Bearing
T7	Thrust Washer
T10	Tachometer Pulse Generator
T13	Drive Shaft
T15	Ball Bearing
T18	Chain
T26	Driven Sprocket
T37	Pivot Pin, 5/8 x 2-3/4 in.
T38	Locking Arm
T39	O-ring, 1/4 x 3/8 in.
T40	Shifter Shoe
T43	Self Locking Nut, 1-1/4-18
T46	Shift Shaft
T47	Sector Gear
T48	Sector Spacer
T49	O-ring, 7/8 x 1 in.

REF NO.	DESCRIPTION
T50	Sleeve Bearing
T62	Shift Arm
T75	Shifter Shoe
T76	Shifter Shoe Stud
T80	Shift Fork Subassembly
T83	Connecting Pin Set
T94	Plain Washer, 1-1/4 in.
T104	Drive Shaft Spacer
T108	Spirol Pin, 1/16 x 1/4 in.
T112	Sleeve
T141	Gasket Repair Kit
T187	Oil Seal, 3-1/2 x 4-3/8 in.
T190	Sleeve Bearing
T230	Drive Shaft Spacer
T237	Shoulder Screw, 3/8 x 1-3/4 in.
T238	Lock Nut, 5/16-18
T254	V-ring Seal
T255	Flanged Bearing

OPTIONAL END YOKES, CROSS & BEARING KITS
AND COMPANION FLANGE

SERIES	YOKE PART NO.	CROSS & BRG KIT NO.
1710	V 2837	V 2839
1810	V 2838	V 2840
SPL140	V 3388	V 3389
COMPANION FLANGE NO.		
1650/1710	V 3619	

MAY NOT HAVE BEEN SUPPLIED BY WATEROUS



DRIVELINE – INPUT SHAFT ONLY

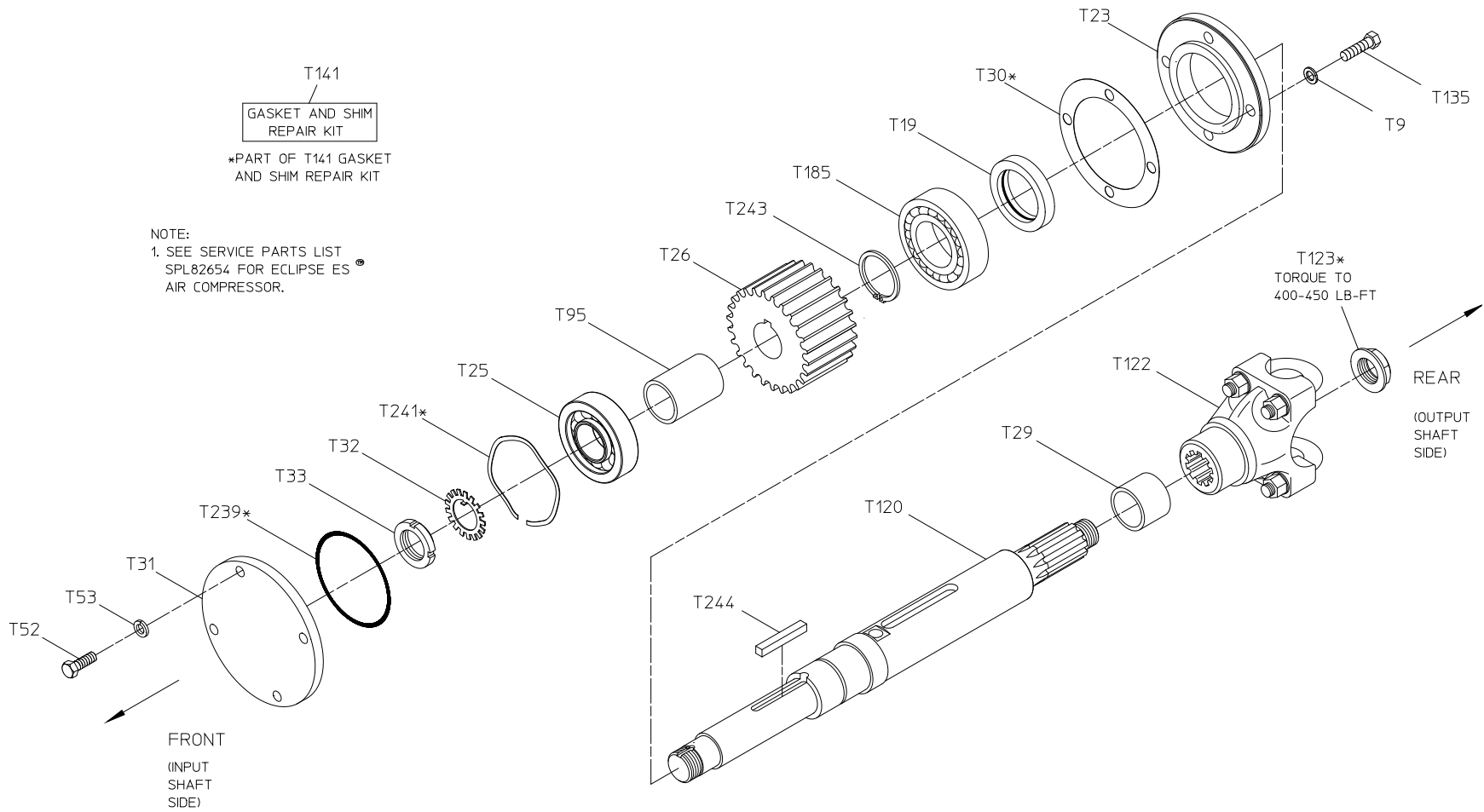
Output Shaft – Single Output to the Rear

REF NO.	DESCRIPTION
T9	Lock Washer, M10
T19	Oil Seal
T23	Oil Seal Housing
T25	Ball Bearing
T26	Driven Sprocket
T29	Yoke Spacer
T30	Plastic Shim, .010
T31	Bearing Cover
T32	Bearing Nut Washer
T33	Bearing Lock Nut
T52	Hex Hd Screw, M12 x 30 mm
T53	Lock Washer, M12

REF NO.	DESCRIPTION
T95	Bearing Spacer
T120	Driven Shaft
T122	End Yoke (1410 Series)
T123	Self-Locking Nut, 1 in.
T135	Hex Hd Screw, M10 x 25 mm
T141	Gasket Repair Kit
T185	Ball Bearing
T239	O-ring, 4-1/4 x 4-1/2 in.
T241	Wave Spring
T243	Retaining Ring
T244	Square Key, 5/16 x 2-5/16 in.

Hardware Torque Specifications:

Screw Size	Torque Specifications
M10	36-40 lb-ft
M12	64-69 lb-ft



OUTPUT SHAFT – SINGLE OUTPUT TO THE REAR