



Document Number	Issue Date	Rev. Date
SPL82916	07/12/06	03/08/11

Auto Tank Fill System Service Parts List

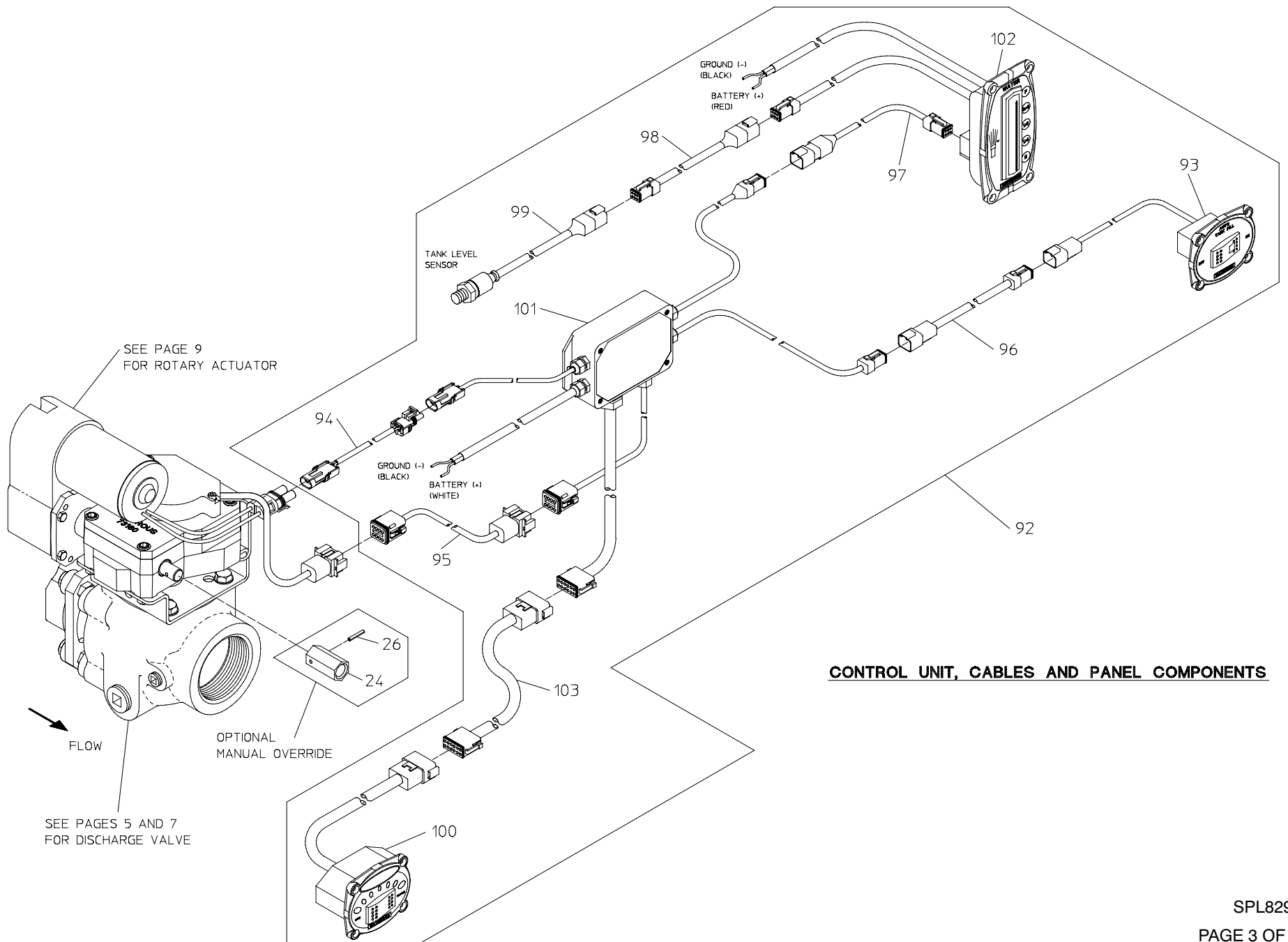
Index:

Component	See Pages
Control Unit, Cables and Panel Components	2, 3
2-1/2 in. Full-Flow Electric Ball Valve	4, 5
3-1/2 in. Standard Electric Ball Valve	6, 7
Electric Rotary Actuator	8, 9
Optional Tapped Flanges and Fittings	10, 11
Available Repair Subassemblies	12, 13

Control Unit, Cables and Panel Components

REF. NO.	DESCRIPTION
24	Adapter Nut, 3/4 in.
26	Heavy Spirol Pin, 1/8 x 3/4 in.
92	Auto Tank Fill Assembly
93	Selector Switch Control Panel Assembly
94	Motor Extension Wire Assembly
95	Encoder Extension Cable
96	Selector Switch Extension Cable

REF. NO.	DESCRIPTION
97	Level Sensor Extension Cable, 60 in.
98	Level Sensor Extension Cable, 120 in.
99	Tank Level Sensor
100	Valve Position Control Panel Assembly
101	Control Unit, 12V or 24V
102	Tank Level Monitor Panel Assembly
103	Position Control Extension Cable



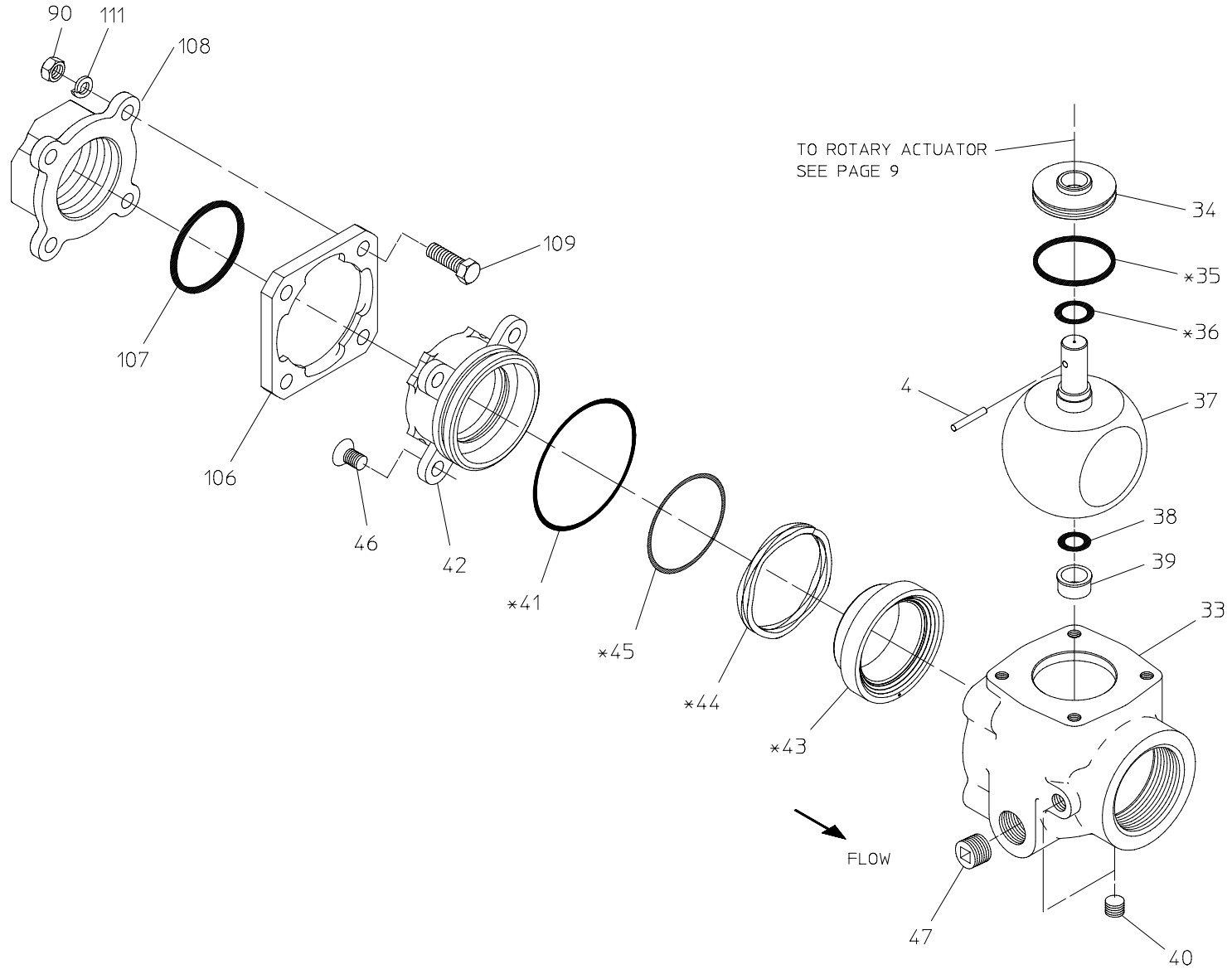
2-1/2 in. Full-Flow Electric Ball Valve

REF. NO.	DESCRIPTION
4	Spring Pin, 3/16 x 1-1/8 in.
33	Valve Body Assembly
34	Upper Stem Bushing
35	O-ring, 2-1/8 x 2-3/8 in.
36	O-ring, 3/4 x 15/16 in.
37	Ball Valve
38	O-ring, 9/16 x 3/4 in.
39	Lower Stem Bushing
40	Pipe Plug, 1/4 in.
41	O-ring, 3-7/8 x 4-1/8 in.
42	Retainer Seal
43	Valve Seal

REF. NO.	DESCRIPTION
44	Wave Spring
45	O-ring, 2-7/8 x 3-1/8 in.
46	Flat Hd Socket Screw, 7/16-14 x 3/4 in.
47	Pipe Plug, 3/4 in.
72	O-ring / Gasket Repair Kit
90	Hex Nut, 7/16-20
106	Mounting Flange
107	O-ring, 2-3/4 x 3 in.
108	Tapped Flange, 2-1/2 in.
109	Hex Hd Screw, 7/16-20 x 1-1/2 in.
111	Lock Washer, 7/16 in.

O-RING & GASKET
REPAIR KIT 72

* PART OF REPAIR KIT 72

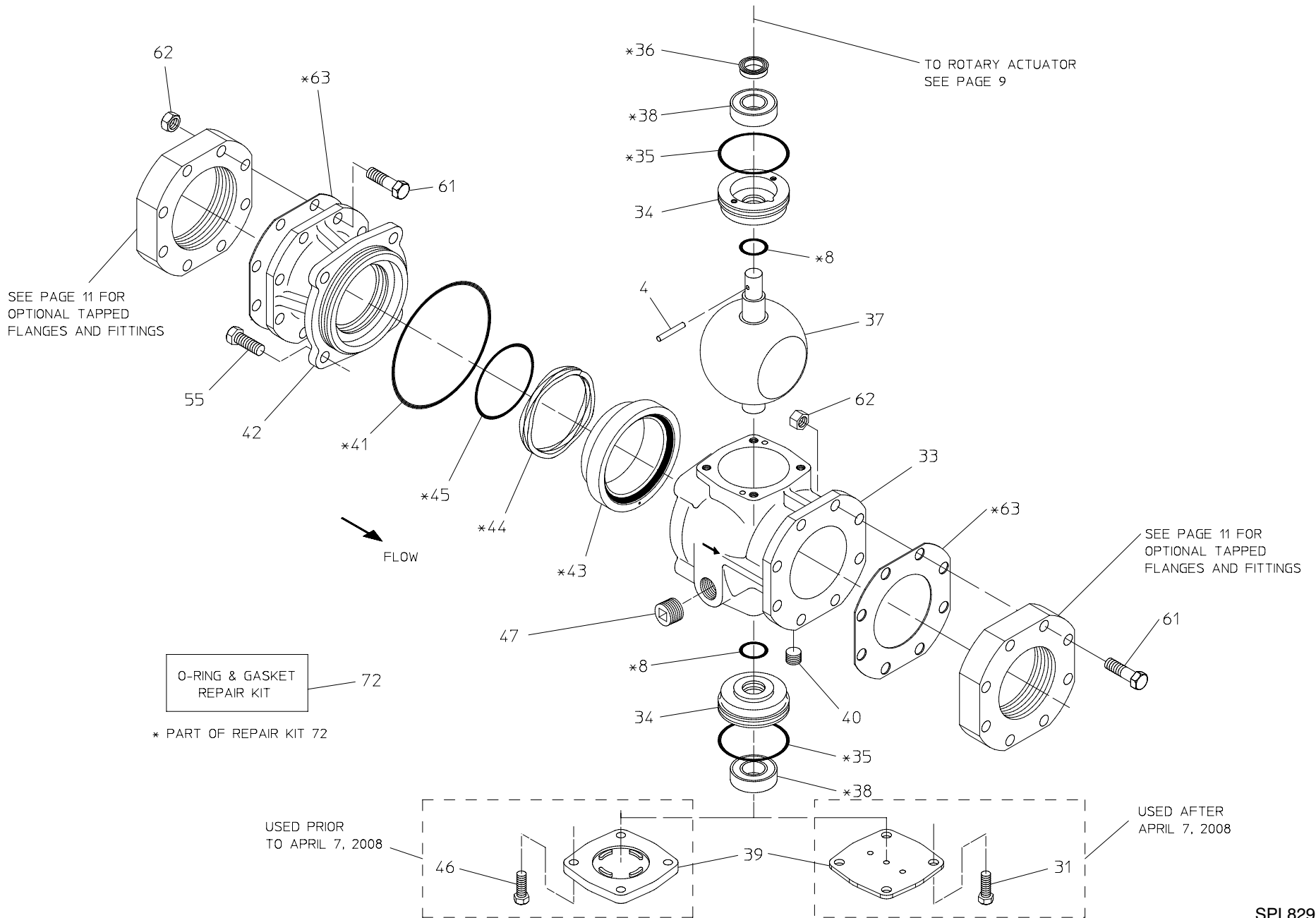


2-1/2 IN. FULL-FLOW ELECTRIC BALL VALVE

3-1/2 in. Standard Electric Ball Valve

REF. NO.	DESCRIPTION
4	Spring Pin, 3/16 x 1-1/8 in.
8	O-ring, 1 x 1-1/4 in.
33	Valve Body Assembly
34	Bearing Retainer
35	O-ring, 2-7/8 x 3-1/8 in.
36	Stem Seal
37	Valve Ball
38	Bearing
39	Valve Cover
40	Pipe Plug, 1/4 in.
41	O-ring, 4-3/4 x 5 in.

REF. NO.	DESCRIPTION
42	Retainer Seal
43	Valve Seal
44	Wave Spring
45	O-ring, 3-3/8 x 3-5/8 in.
46	Hex Hd Screw, 3/8-16 x 7/8 in.
47	Pipe Plug, 3/4 in.
55	Hex Hd Screw, 1/2-13 x 1-1/4 in.
61	Hex Hd Screw, 1/2-20 x 1-3/4 in.
62	Hex Nut, 1/2-20
63	Gasket
72	O-ring / Gasket Repair Kit



3-1/2 IN. STANDARD ELECTRIC BALL VALVE

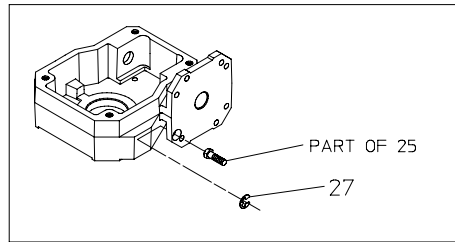
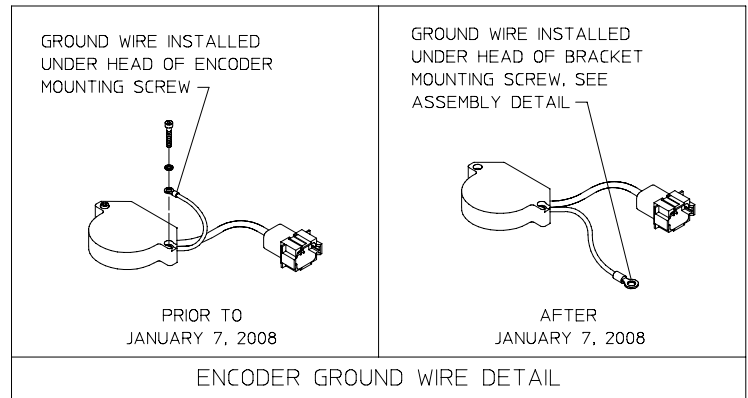
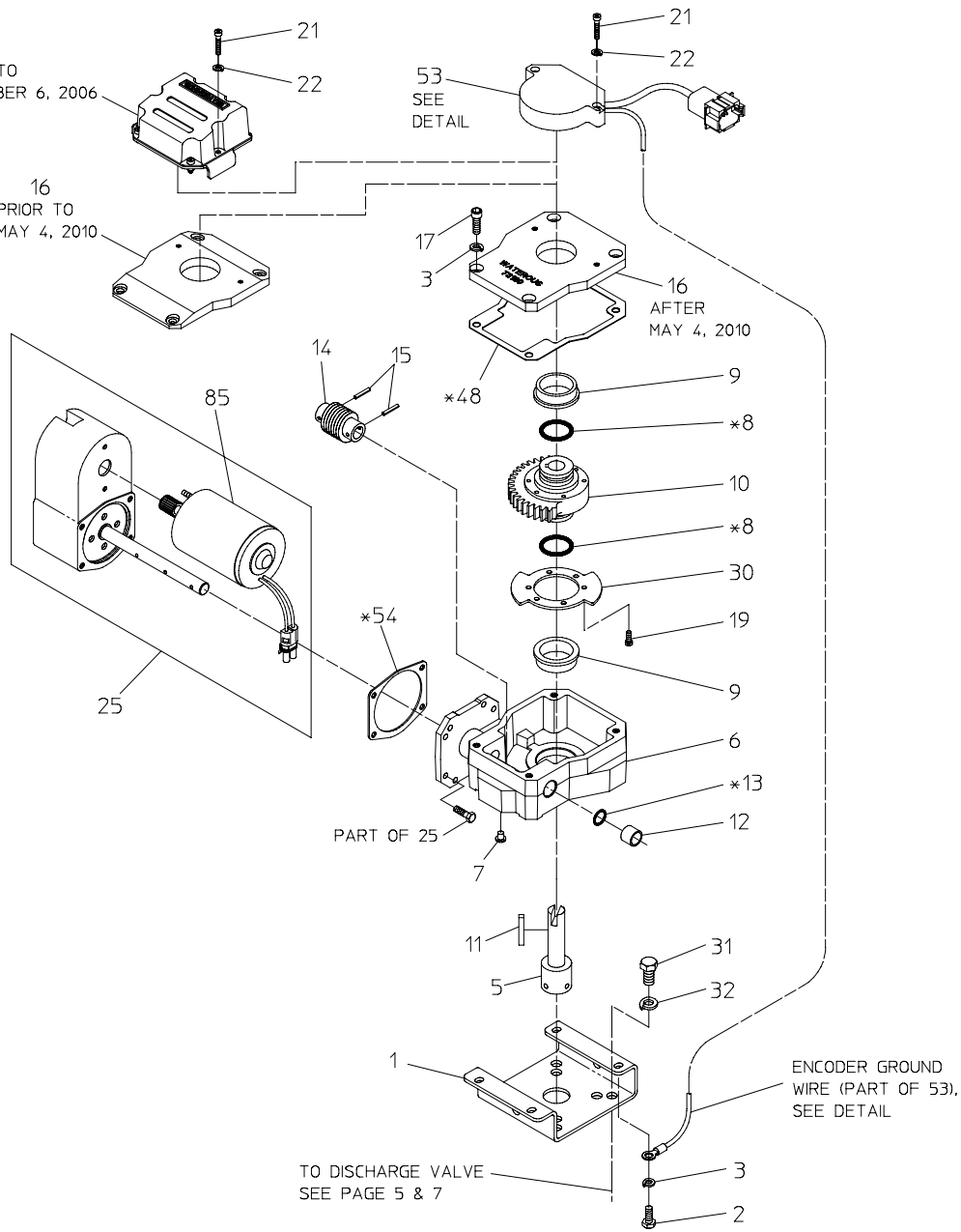
Electric Rotary Actuator

REF. NO.	DESCRIPTION
1	Mounting Bracket
2	Hex Hd Screw, 1/4-20 x 5/8 in.
3	Lock Washer, 1/4 in.
5	Extension Shaft
6	Electric Housing Assembly
7	Rubber Plug
8	O-ring, 1 x 1-1/4 in.
9	Flanged Bearing, 1-1/4 x 1-1/2 in.
10	Sector Worm Gear
11	Key, 3/16 x 1-1/4 in.
12	Sleeve Bearing, 1/2 x 5/8 in.
13	O-ring, 1/2 x 5/8 in.
14	Worm Gear
15	Spirol Pin, 1/8 x 3/4 in.
16	Housing Assembly Cover

REF. NO.	DESCRIPTION
17	Socket Hd Screw, 1/4-20 x 5/8 in.
19	Socket Hd Screw, 8-32 x 1/2 in.
21	Socket Hd Screw, 8-32 x 7/8 in.
22	Lock Washer, #8
25	Gear Motor, 12V or 24V
27	Retaining Ring
30	Limit Disc
31	Hex Hd Screw, 3/8-16 x 5/8 in.
32	Lockwsher, 3/8 in.
48	Actuator Gasket
53	Rotary Encoder, 90°
54	Gear Motor Gasket
72	O-ring / Gasket Repair Kit
85	Motor Replacement Kit

53
PRIOR TO
NOVEMBER 6, 2006

16
PRIOR TO
MAY 4, 2010



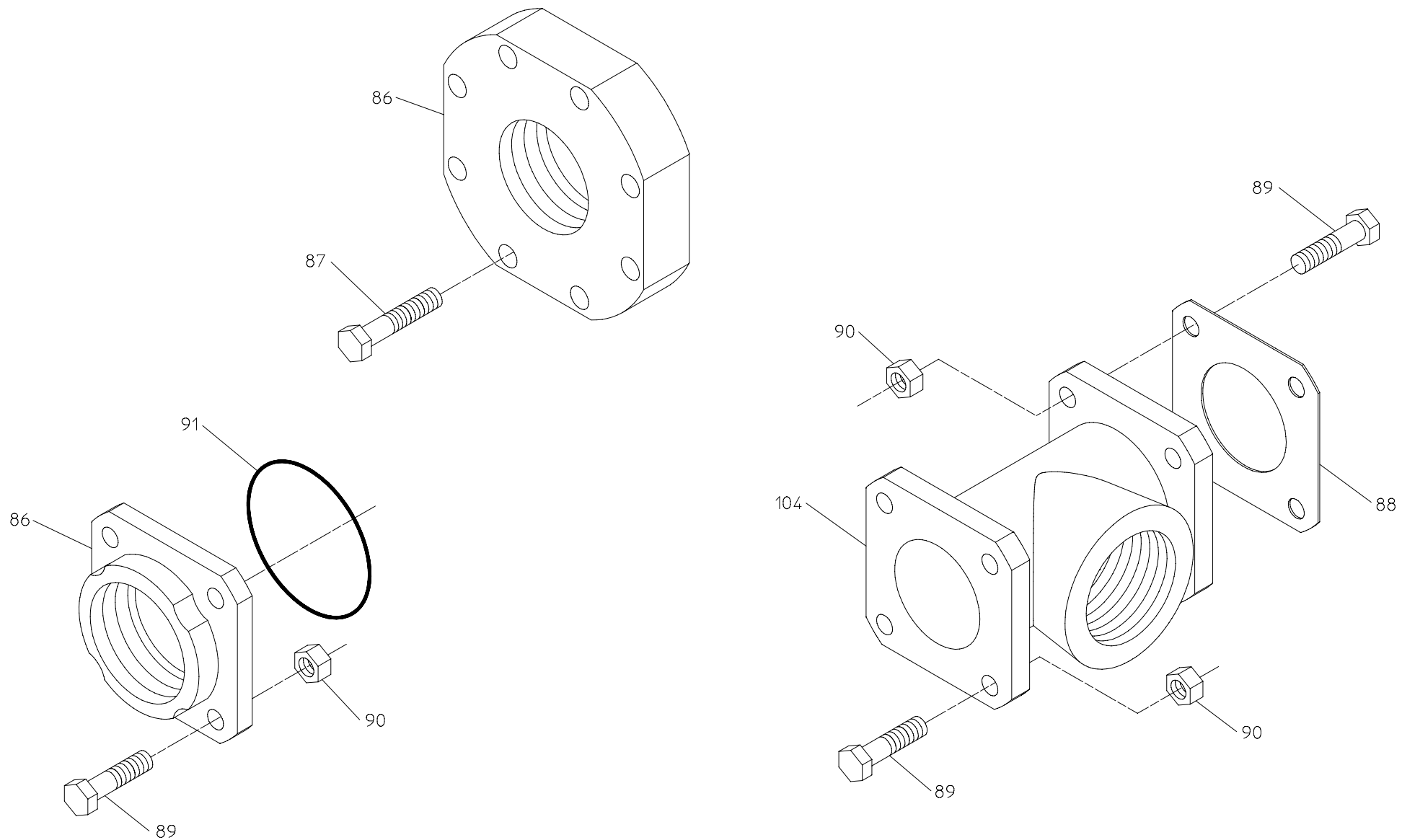
- O-RING & GASKET REPAIR KIT 72
- * PART OF REPAIR KIT 72
- MOTOR REPLACEMENT KIT 85

ELECTRIC ROTARY ACTUATOR

Optional Tapped Flanges and Fittings

REF. NO.	DESCRIPTION
86	Tapped Flange, 4-Bolt or 8-Bolt
87	Hex Hd Screw, 1/2-20 x 2-1/2 in.
88	Gasket
89	Hex Hd Screw, 7/16-20 x 1-3/4 in.

REF. NO.	DESCRIPTION
90	Hex Nut, 7/16-20
91	O-ring, 3-1/2 x 3-3/4 in.
104	Discharge Extension



OPTIONAL TAPPED FLANGES AND FITTINGS

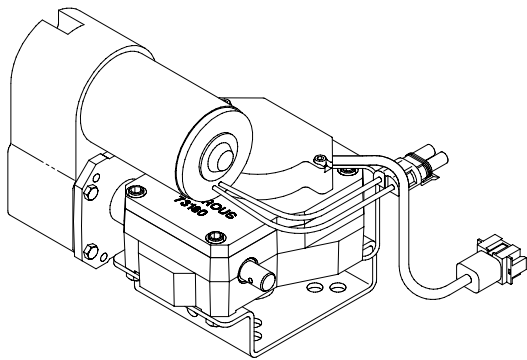
THESE FITTINGS MAY HAVE BEEN FURNISHED
BY THE OEM IN THE BALL VALVE PLUMBING

Available Repair Subassemblies

REF. NO.	DESCRIPTION
120	Actuator Subassembly

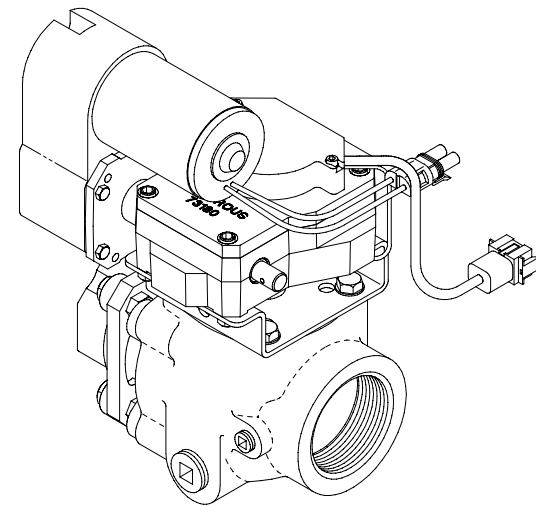
REF. NO.	DESCRIPTION
121	Valve and Actuator Subassembly

120



ACTUATOR SUBASSEMBLY

121



VALVE AND ACTUATOR SUBASSEMBLY

AVAILABLE REPAIR SUBASSEMBLIES