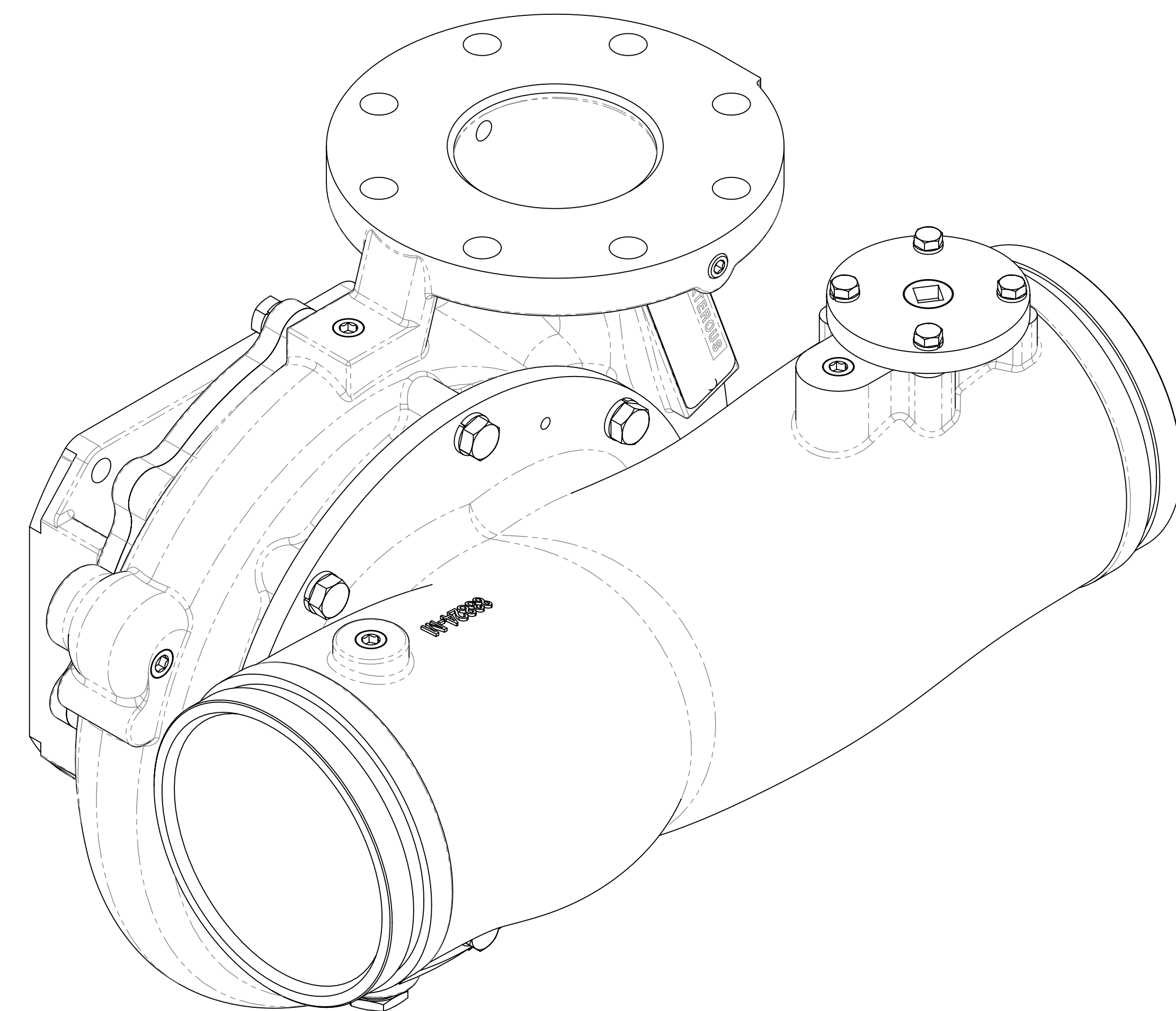
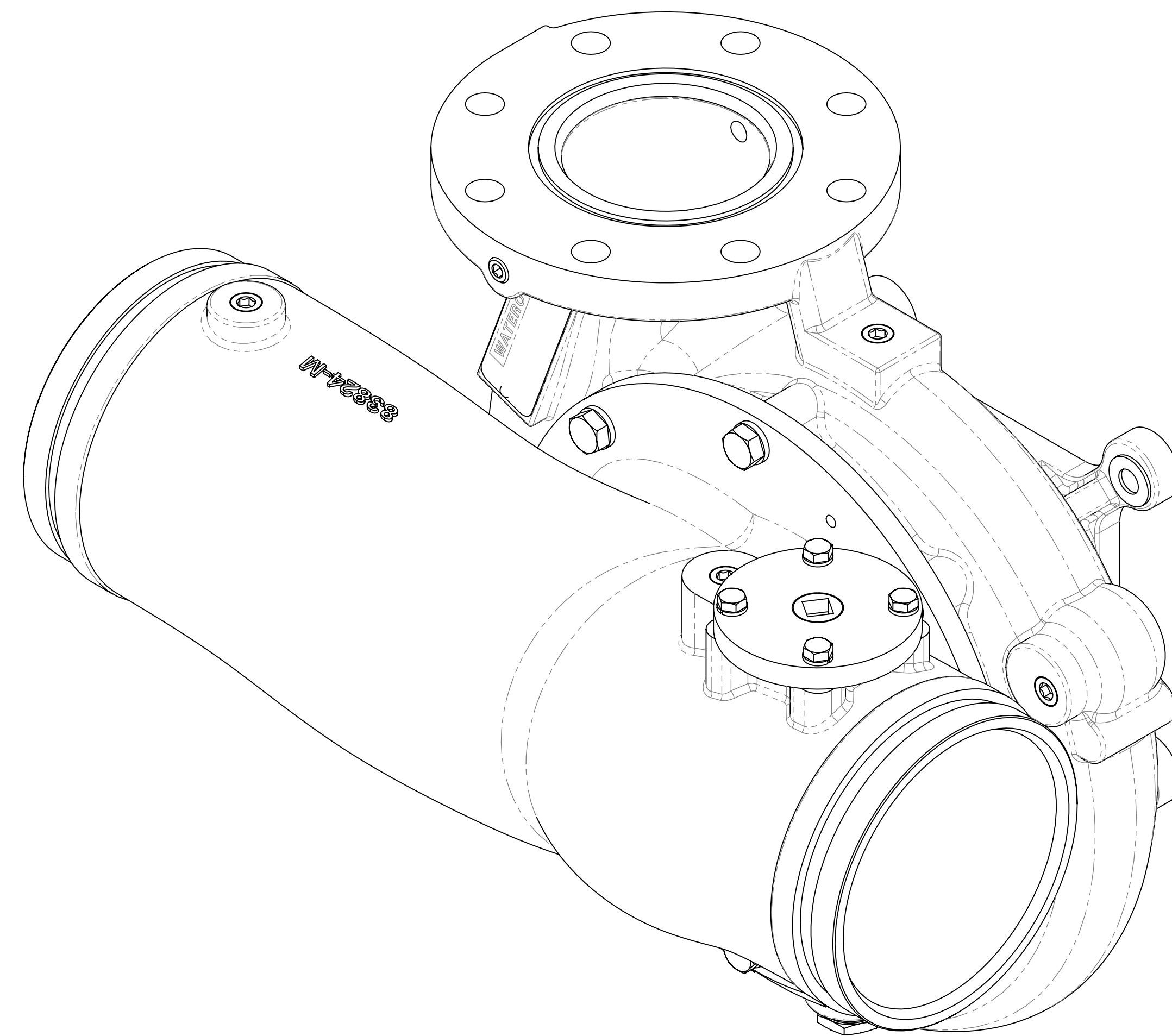


CXS Series Pump Body Service Parts List

Index:

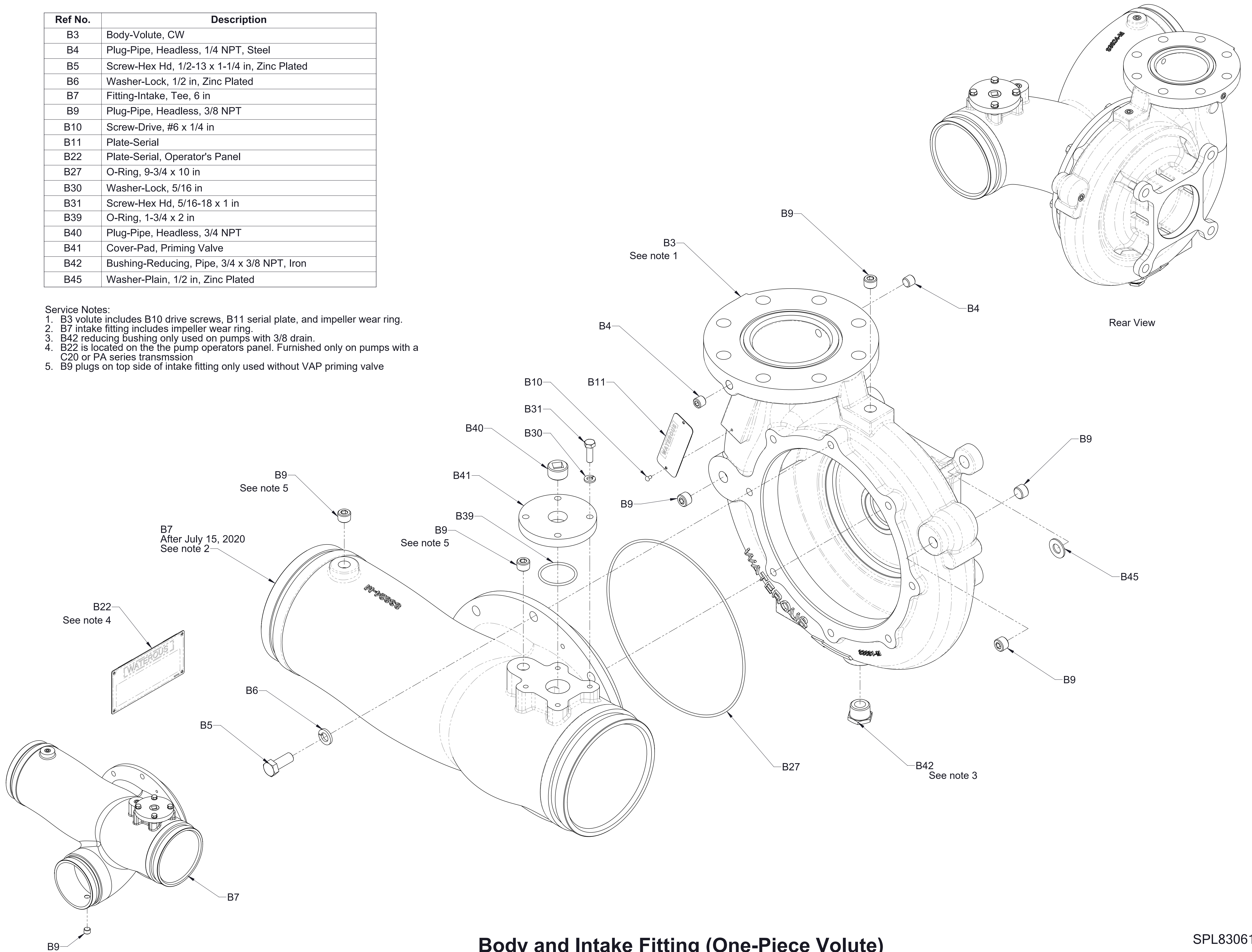
Pump and Transmission Model (Located on Pump Serial Plate)						See Page			
C20 Series	C10 Series	D Series	K Series	T Series	P Series	Body and Intake Fitting		Optional Discharge Manifold	
						One-Piece Volute	Two-Piece Volute	With 3-1/2 in. End Flanges	With 4 in. End Flanges
CXSC20B CXSC20C CXSC20D CXSC20E CXSC20F	CXSC10C CXSC10D CXSC10E CXSC10F	--	CXSK	CXST	CXSPA	2	3	6	7
--	--	CXSD	--	--	--	4	5		



Ref No.	Description
B3	Body-Volute, CW
B4	Plug-Pipe, Headless, 1/4 NPT, Steel
B5	Screw-Hex Hd, 1/2-13 x 1-1/4 in, Zinc Plated
B6	Washer-Lock, 1/2 in, Zinc Plated
B7	Fitting-Intake, Tee, 6 in
B9	Plug-Pipe, Headless, 3/8 NPT
B10	Screw-Drive, #6 x 1/4 in
B11	Plate-Serial
B22	Plate-Serial, Operator's Panel
B27	O-Ring, 9-3/4 x 10 in
B30	Washer-Lock, 5/16 in
B31	Screw-Hex Hd, 5/16-18 x 1 in
B39	O-Ring, 1-3/4 x 2 in
B40	Plug-Pipe, Headless, 3/4 NPT
B41	Cover-Pad, Priming Valve
B42	Bushing-Reducing, Pipe, 3/4 x 3/8 NPT, Iron
B45	Washer-Plain, 1/2 in, Zinc Plated

Service Notes:

1. B3 volute includes B10 drive screws, B11 serial plate, and impeller wear ring.
2. B7 intake fitting includes impeller wear ring.
3. B42 reducing bushing only used on pumps with 3/8 drain.
4. B22 is located on the the pump operators panel. Furnished only on pumps with a C20 or PA series transmsion
5. B9 plugs on top side of intake fitting only used without VAP priming valve



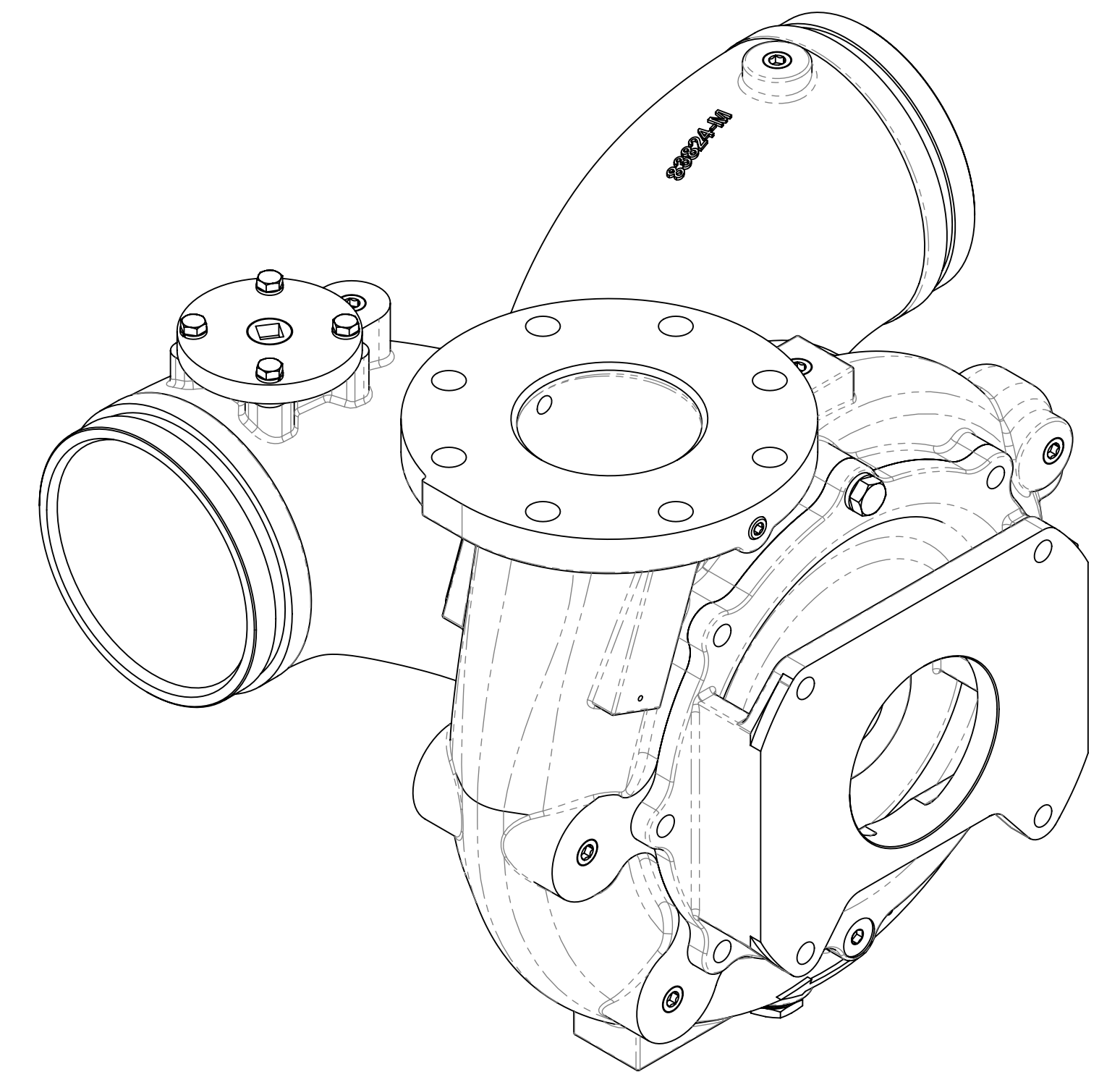
Intake Fitting prior to July 15, 2020

**Body and Intake Fitting (One-Piece Volute)
C20, K, and P Series Transmission**

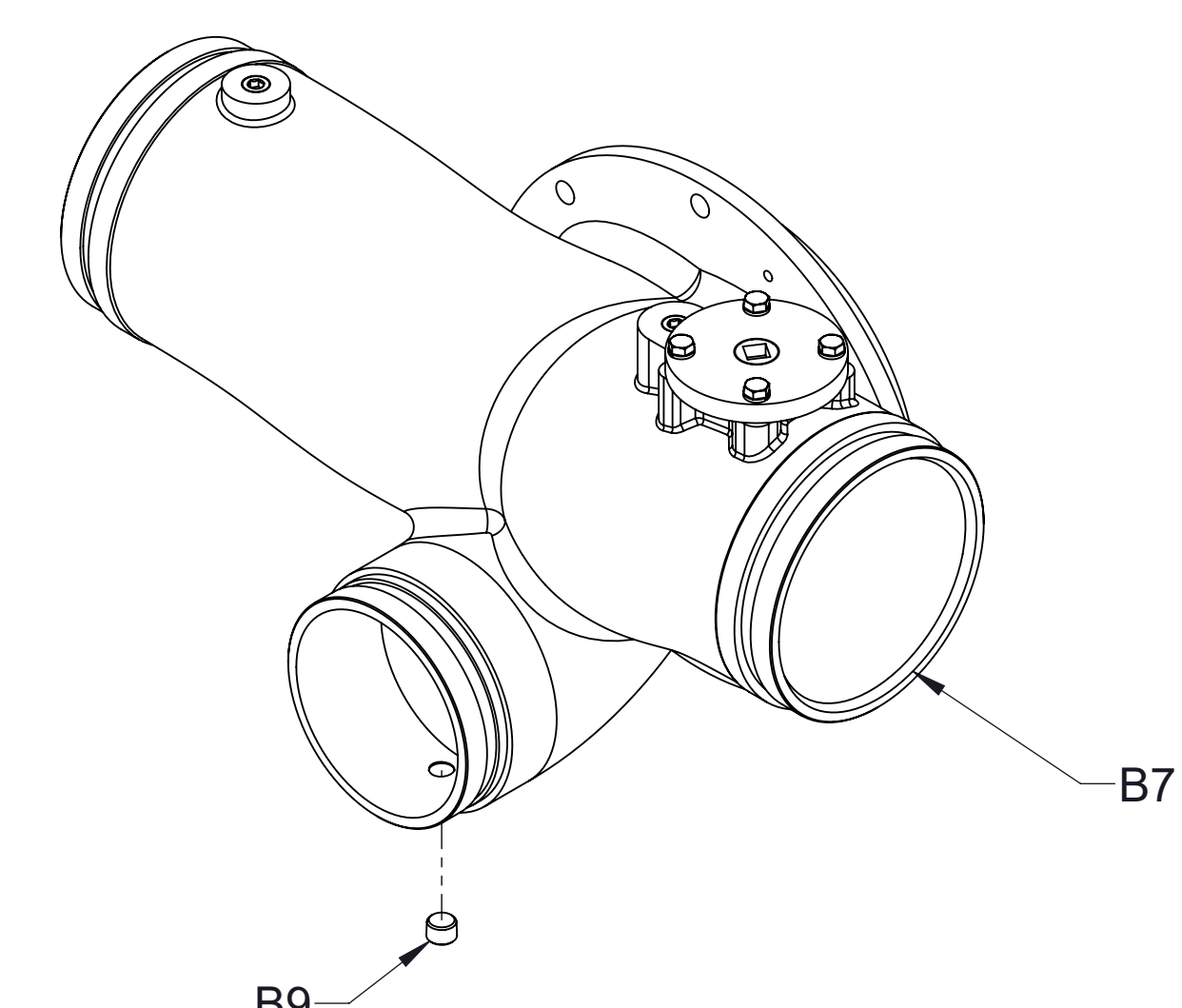
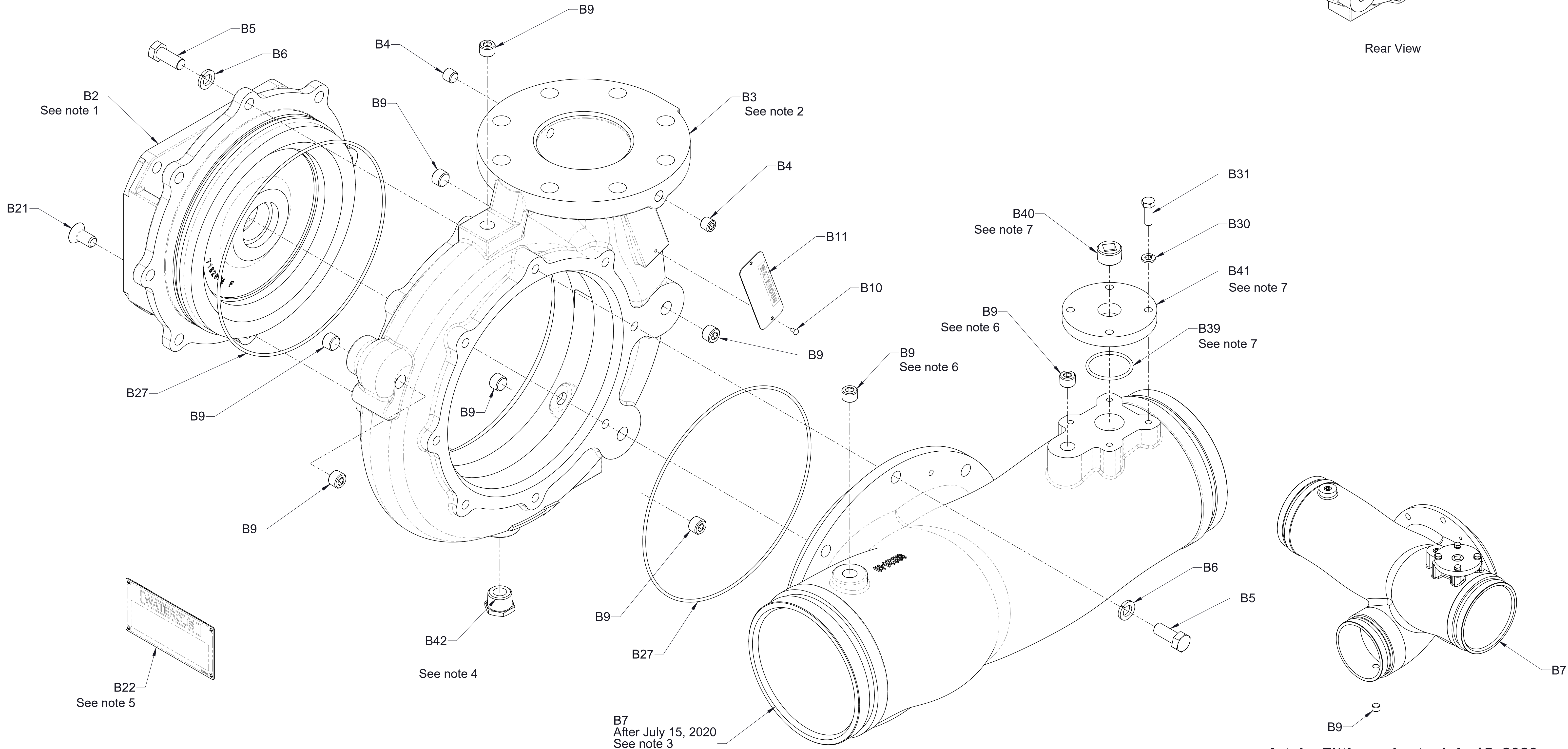
Ref No.	Description
B2	Head-Pump (Mech Seal)
B3	Body-Volute
B4	Plug-Pipe, Headless, 1/4 NPT, Steel
B5	Screw-Hex Hd, 1/2-13 x 1-1/4 in, Zinc Plated
B6	Washer-Lock, 1/2 in, Zinc Plated
B7	Fitting-Intake, Tee, 6 in
B9	Plug-Pipe, Headless, 3/8 NPT
B10	Screw-Drive, #6 x 1/4 in
B11	Plate-Serial
B21	Screw-Machine, Flat Head, Hex Soc, 1/2-13 x 1 in
B22	Plate-Serial, Operator's Panel
B27	O-Ring, 9-3/4 x 10 in
B30	Washer-Lock, 5/16 in
B31	Screw-Hex Hd, 5/16-18 x 1 in
B39	O-Ring, 1-3/4 x 2 in
B40	Plug-Pipe, Headless, 3/4 NPT
B41	Cover-Pad, Priming Valve
B42	Bushing-Reducing, Pipe, 3/4 x 3/8 NPT, Iron

Service Notes:

1. B2 pump head includes impeller wear ring.
2. B3 volute includes B11 drive screws and B10 serial plate.
3. B7 intake fitting includes impeller wear ring.
4. B42 reducing bushing only used on pumps with 3/8 drain after March 11, 2015.
5. B22 is located on the the pump operators panel. Furnished only on pumps with a C10, C20, or PA series transmsion.
6. B9 plugs on top side of intake fitting only used without VAP priming valve.
7. Effective February 15, 2013. Cover designed changed to use a smaller o-ring and larger pipe plug. Components prior to this date as follows:
 -Cover (B29)
 -O-ring (B28) 2-1/8 x 2-3/8
 -Pipe Plug (B9) 3/8 NPT, Headless, Steel



Rear View



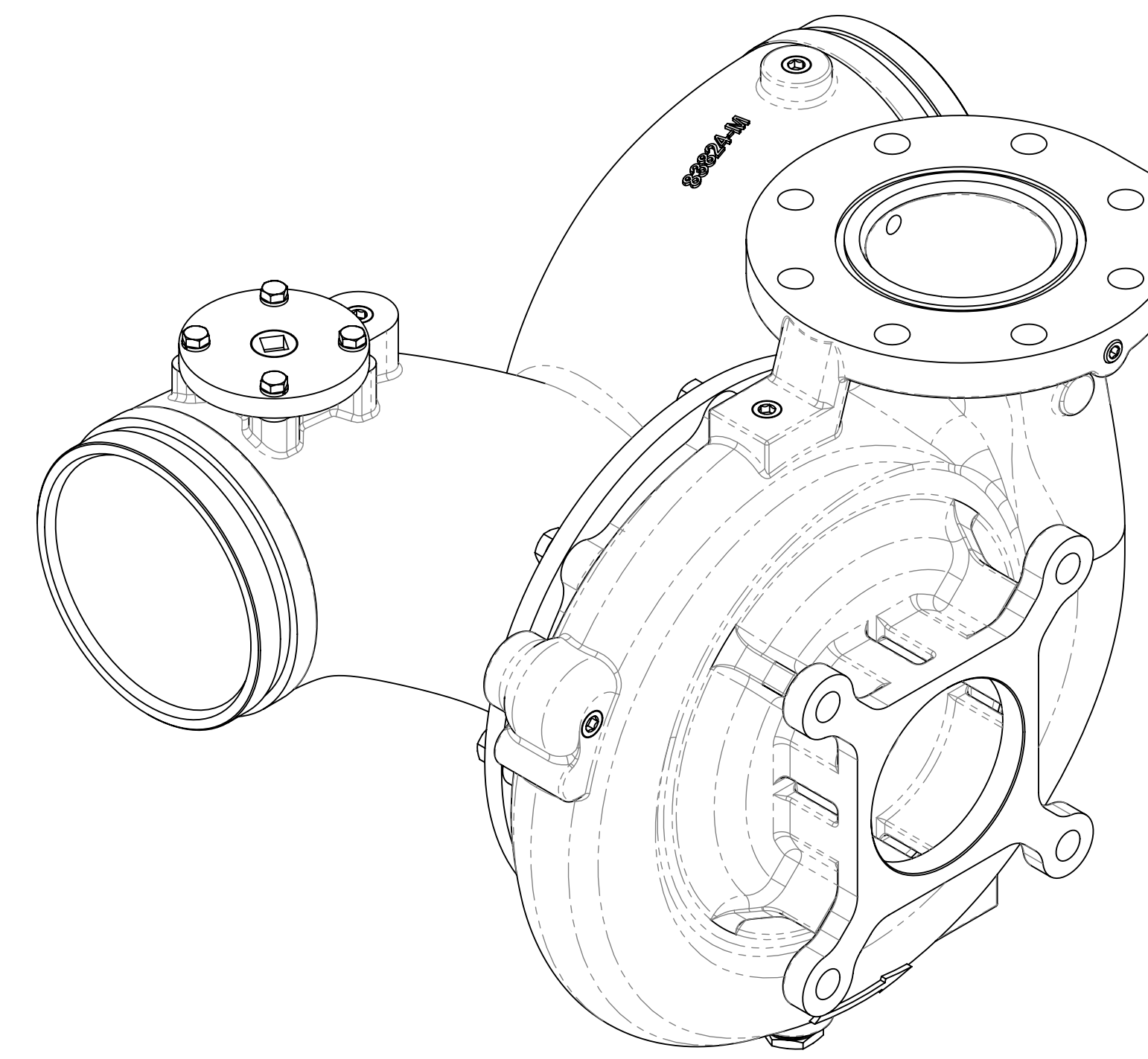
Intake Fitting prior to July 15, 2020

**Body and Intake Fitting (Two-Piece Volute)
C10, C20, K, and P Series Transmission**

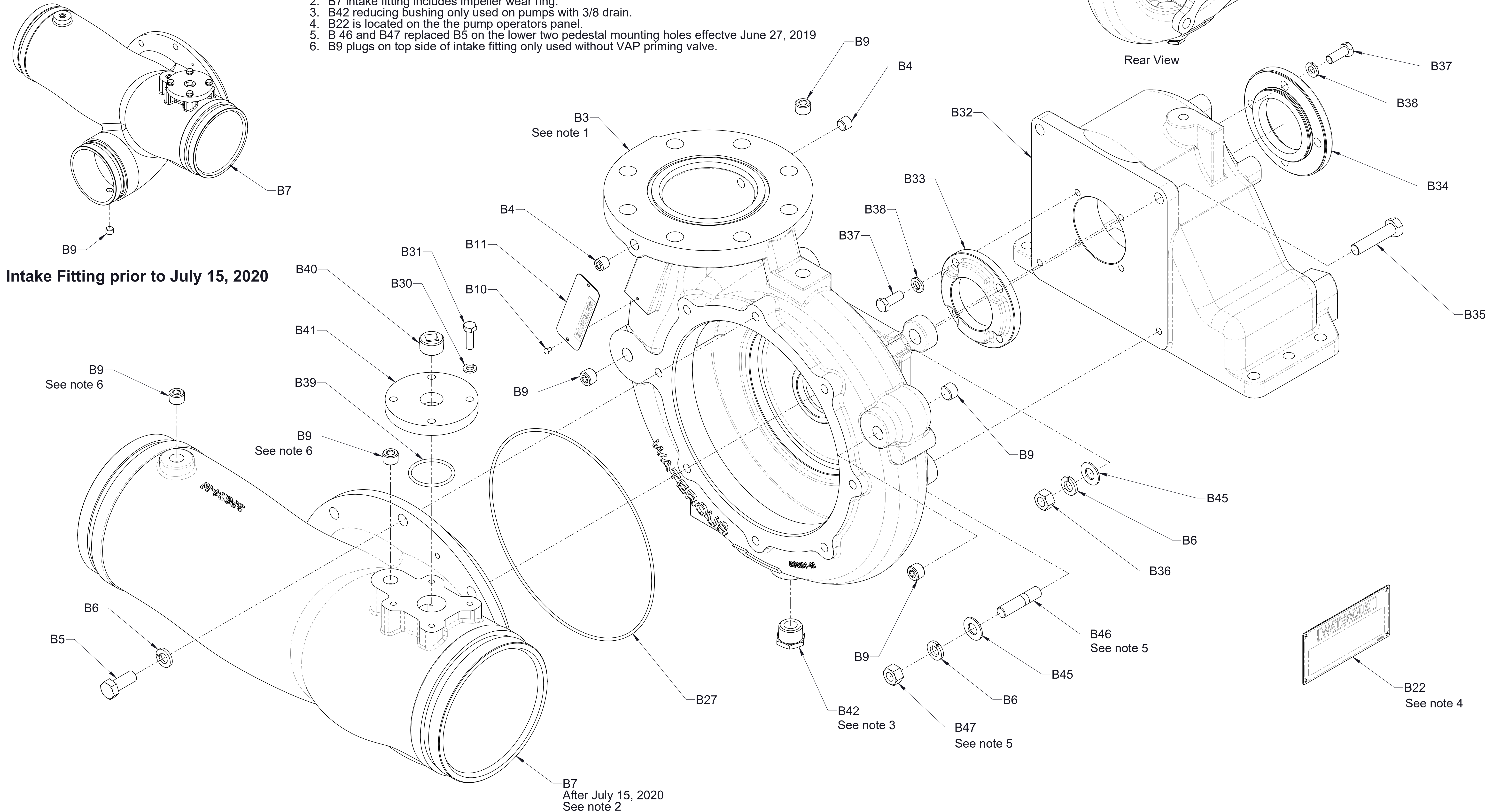
Ref No.	Description	Ref No.	Description
B3	Body-Volute, CW	B33	Housing-Seal, Oil
B4	Plug-Pipe, Headless, 1/4 NPT, Steel	B34	Housing-Seal, Oil
B5	Screw-Hex Hd, 1/2-13 x 1-1/4 in, Zinc Plated	B35	Screw-Hex Hd, 1/2-20 x 2-1/4 in, Heat Treated, Zinc Plated
B6	Washer-Lock, 1/2 in, Zinc Plated	B36	Nut-Hex, 1/2-20, Zinc Plated
B7	Fitting-Intake, Tee, 6 in	B37	Screw-Hex Head, 3/8-16 x 1 in, Zinc Plated, Heat Treated
B9	Plug-Pipe, Headless, 3/8 NPT	B38	Washer-Lock, 3/8 in, Zinc Plated
B10	Screw-Drive, #6 x 1/4 in	B39	O-Ring, 1-3/4 x 2 in
B11	Plate-Serial	B40	Plug-Pipe, Headless, 3/4 NPT
B22	Plate-Serial, Operator's Panel	B41	Cover-Pad, Priming Valve
B27	O-Ring, 9-3/4 x 10 in	B42	Bushing-Reducing, Pipe, 3/4 x 3/8 NPT, Iron
B30	Washer-Lock, 5/16 in	B45	Washer-Plain, 1/2 in, Zinc Plated
B31	Screw-Hex Hd, 5/16-18 x 1 in	B46	Stud-Coarse, 1/2-13 x 2-1/4 in
B32	Cap-Transmission	B47	Nut-Hex, 1/2-13, Zinc Plated

Service Notes:

1. B3 volute includes B10 drive screws, B11 serial plate, and impeller wear ring.
2. B7 intake fitting includes impeller wear ring.
3. B42 reducing bushing only used on pumps with 3/8 drain.
4. B22 is located on the the pump operators panel.
5. B 46 and B47 replaced B5 on the lower two pedestal mounting holes effective June 27, 2019
6. B9 plugs on top side of intake fitting only used without VAP priming valve.



Rear View

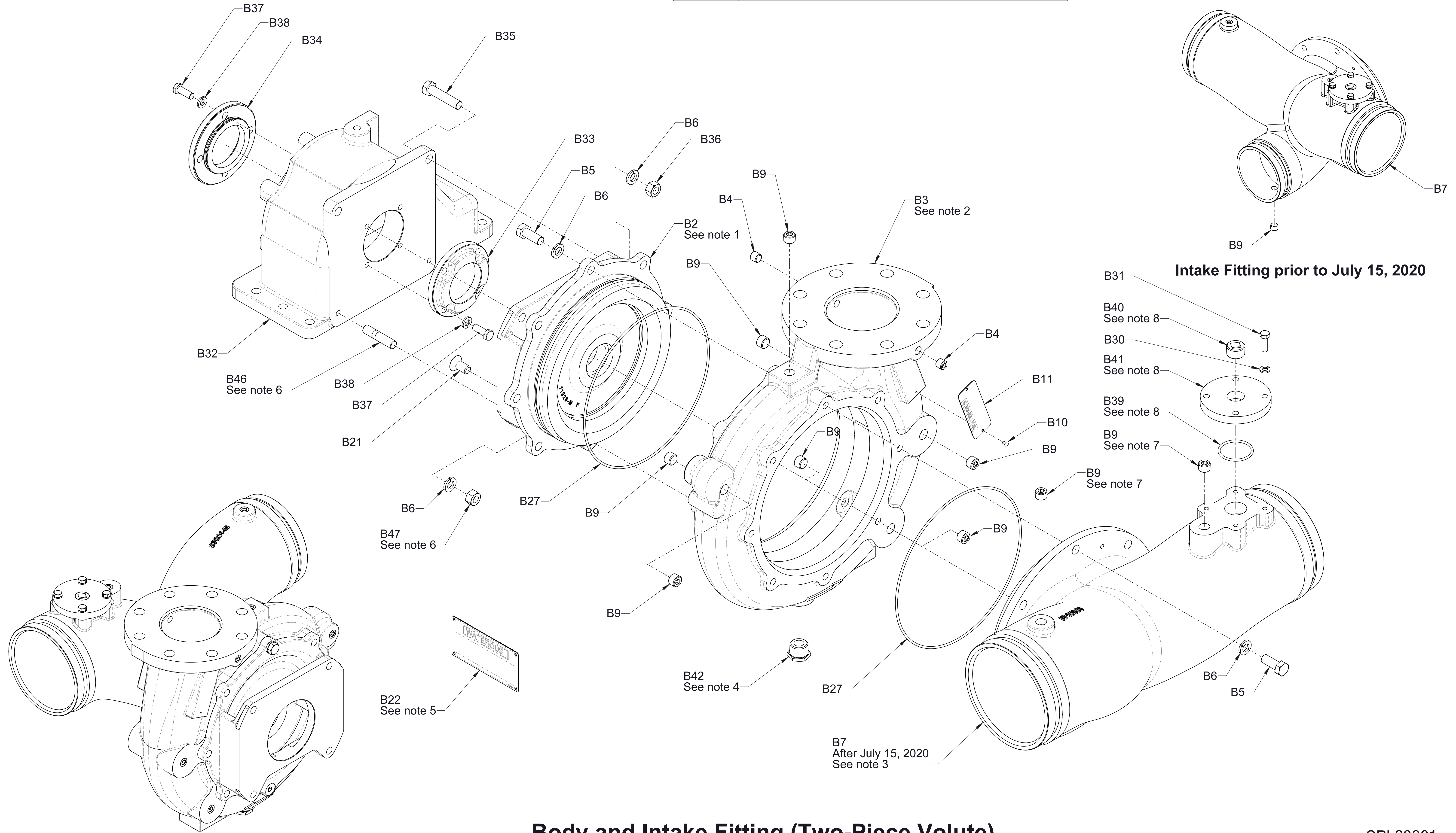


**Body and Intake Fitting (One-Piece Volute)
D Series Transmission**

Service Notes::

1. B2 pump head includes impeller wear ring.
2. B3 volute includes B10 drive screws and B11 serial plate.
3. B7 intake fitting includes impeller wear ring.
4. B42 reducing bushing only used on pumps with 3/8 drain after March 11, 2015.
5. B22 is located on the the pump operators panel.
6. B 46 and B47 replaced B5 on the lower two pedestal mounting holes effective June 27, 2019
7. B9 plugs on top side of intake fitting only used without VAP priming valve.
8. Effective February 15, 2013. Cover designed changed to use a smaller o-ring and larger pipe plug. Components prior to this date as follows:
 -Cover (B29)
 -O-ring (B28) 2-1/8 x 2-3/8
 -Pipe Plug (B9) 3/8 NPT, Headless, Steel

Ref No.	Description	Ref No.	Description
B2	Head-Pump (Mech Seal)	B32	Cap-Transmission
B3	Body-Volute	B33	Housing-Seal, Oil
B4	Plug-Pipe, Headless, 1/4 NPT, Steel	B34	Housing-Seal, Oil
B5	Screw-Hex Hd, 1/2-13 x 1-1/4 in, Zinc Plated	B35	Screw-Hex Hd, 1/2-20 x 2-1/4 in, Heat Treated, Zinc Plated
B6	Washer-Lock, 1/2 in, Zinc Plated	B36	Nut-Hex, 1/2-20, Zinc Plated
B7	Fitting-Intake, Tee, 6 in	B37	Screw-Hex Head, 3/8-16 x 1 in, Zinc Plated, Heat Treated
B9	Plug-Pipe, Headless, 3/8 NPT	B38	Washer-Lock, 3/8 in, Zinc Plated
B10	Screw-Drive, #6 x 1/4 in	B39	O-Ring, 1-3/4 x 2 in
B11	Plate-Serial	B40	Plug-Pipe, Headless, 3/4 NPT
B21	Screw-Machine, Flat Head, Hex Soc, 1/2-13 x 1 in	B41	Cover-Pad, Priming Valve
B22	Plate-Serial, Operator's Panel	B42	Bushing-Reducing, Pipe, 3/4 x 3/8 NPT, Iron
B27	O-Ring, 9-3/4 x 10 in	B46	Stud-Coarse, 1/2-13 x 2-1/4 in
B30	Washer-Lock, 5/16 in	B47	Nut-Hex, 1/2-13, Zinc Plated
B31	Screw-Hex Hd, 5/16-18 x 1 in		

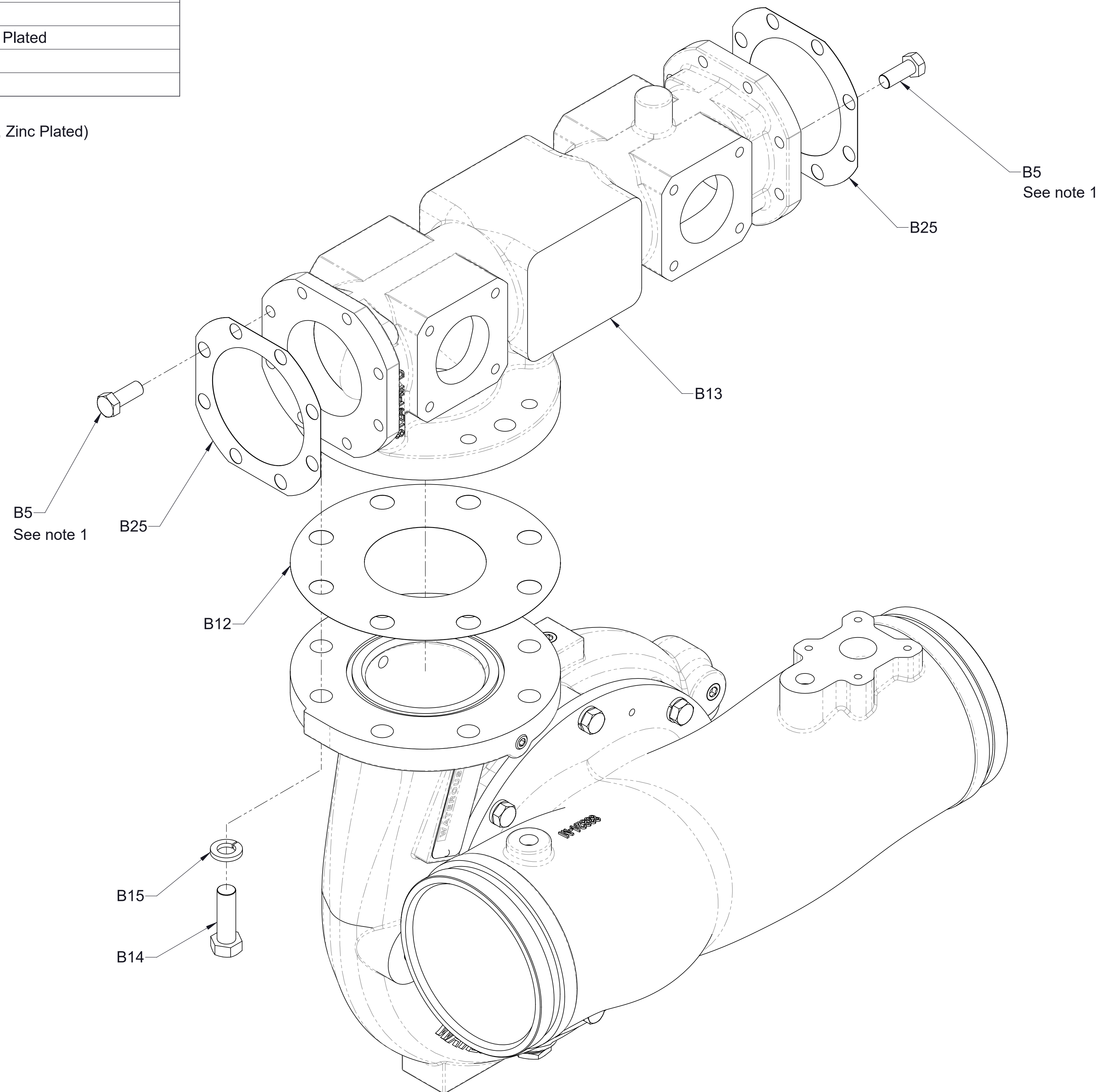


**Body and Intake Fitting (Two-Piece Volute)
D Series Transmission**

Ref No.	Description
B5	Screw-Hex Hd, 1/2-13 x 1-1/4 in, Zinc Plated
B12	Gasket-Discharge Manifold (CX)
B13	Manifold-Discharge (CX)
B14	Screw-Hex Hd, 5/8-11 x 2 in, Zinc Plated
B15	Washer-Lock, 5/8 in
B25	Gasket-Flange, 3-1/2, 8-Bolt

Service Note:

1. B5 was B26 (Screw-Hex Hd, 1/2-13 x 1-1/4 in, Zinc Plated)

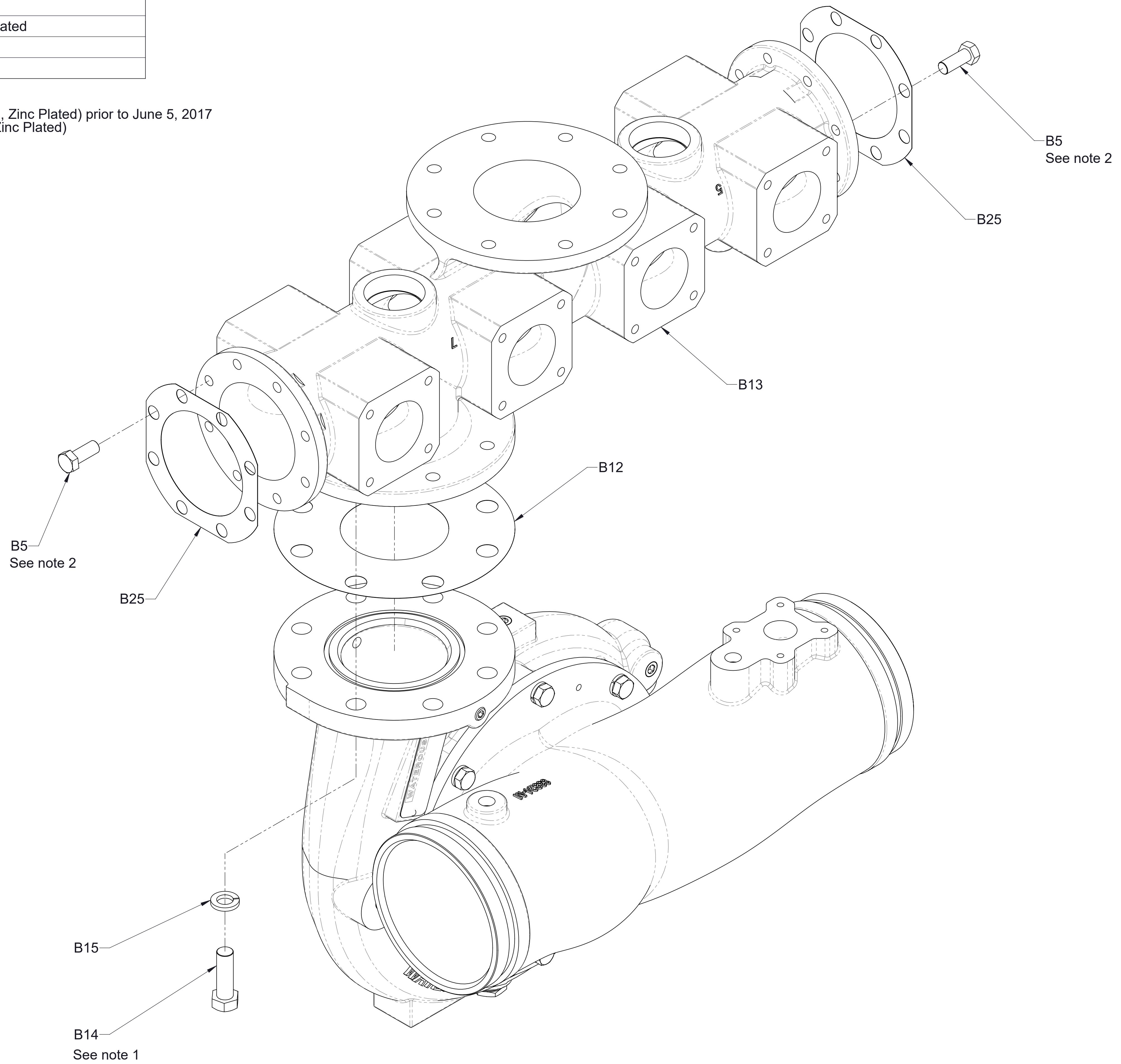


**Discharge Manifold
With 3-1/2 in. End Flanges**

Ref No.	Description
B5	Screw-Hex Hd, 1/2-13 x 1-1/4 in, Zinc Plated
B12	Gasket-Discharge Manifold (CX)
B13	Manifold-Discharge
B14	Screw-Hex Hd, 5/8-11 x 2 in, Zinc Plated
B15	Washer-Lock, 5/8 in
B25	Gasket-Flange, 3-1/2, 8-Bolt

Service Notes:

1. B14 was B24 (Screw-Hex Hd, 5/8-11 x 1-3/4 in, Zinc Plated) prior to June 5, 2017
2. B5 was B26 (Screw-Hex Hd, 1/2-13 x 1-1/4 in, Zinc Plated)



**Discharge Manifold
With 4 in. End Flanges**