



Document Number	Issue Date	Rev. Date
SPL83095	02/16/12	8/17/20

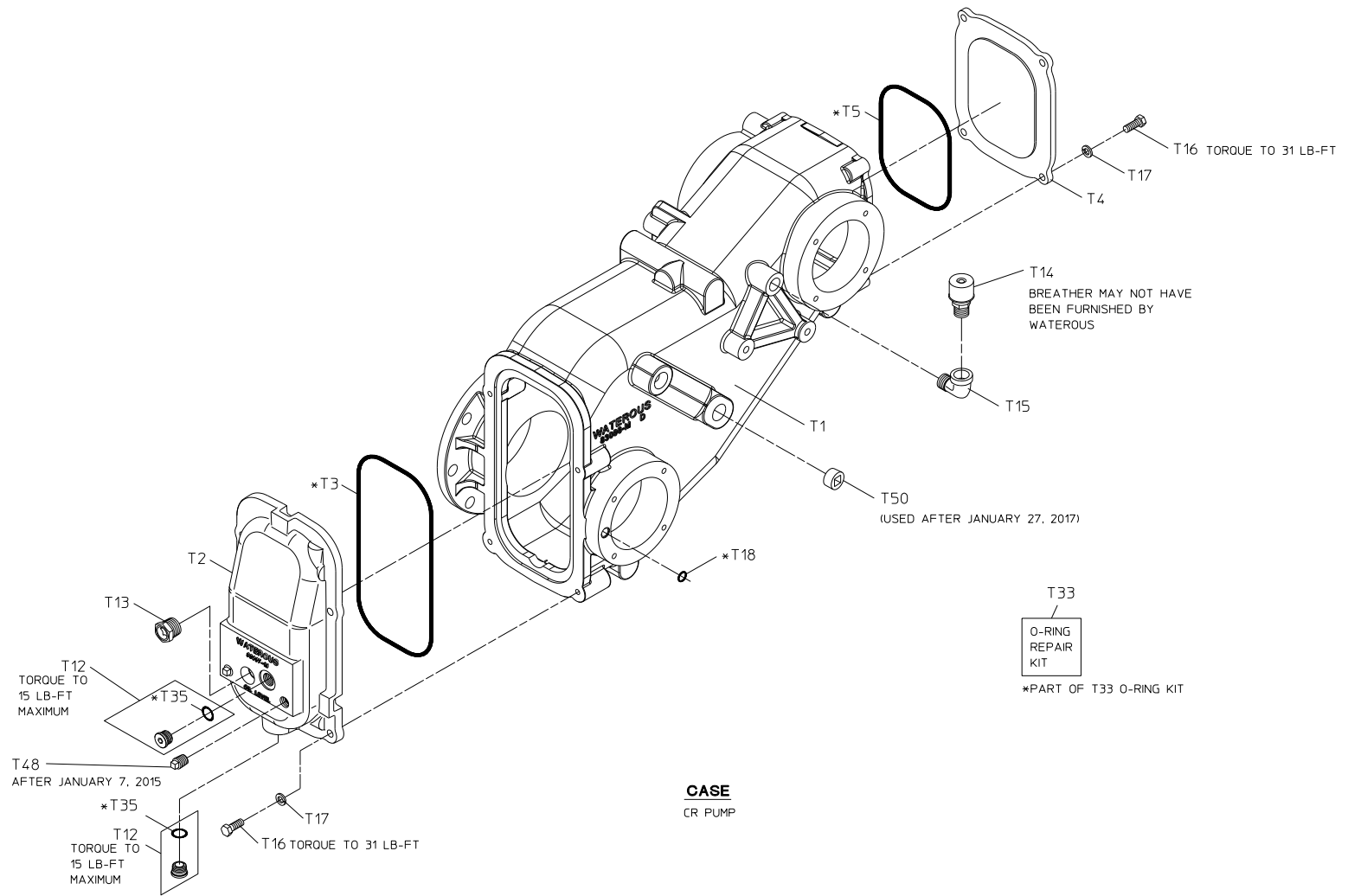
QB Series Transmission Service Parts List

Pump Model <i>(Located on Pump Serial Plate)</i>	Component	See Page
CRQB	Case	2, 3
	Driveline	4, 5
	Cross-Section View	6, 7
CXVQB (Front Facing Intake)	Case	8, 9
	Driveline	10, 11
	Cross-Section View	12, 13
CXVQB (Rear Facing Intake)	Case	14, 15
	Driveline	16, 17
	Cross-Section View	18, 19

Case - CRQB

REF. NO.	DESCRIPTION
T1	Case Subassembly
T2	Pan
T3	O-ring, 10-1/2 x 10-7/8 in.
T4	Top Cover
T5	O-ring, 6-3/4 x 7-1/8 in.
T12	Magnetic Drain Plug, 3/4-16 (Includes T35)
T13	Sight Plug, 3/4 NPT
T14	Breather, 1/2 NPT
T15	Street Elbow, 90 Degrees, 1/2 NPT
T16	Hex Head Screw, 3/8-16 x 1 in.
T17	Lockwasher, 3/8 in.
T18	O-ring, 1/2 x 5/8 in. (CRQB Only)

REF. NO.	DESCRIPTION
T33	O-ring Repair Kit
T35	O-ring, 16.4 mm x 20.8 mm
T48	Pipe Plug, 1/2 NPT
T50	Pipe Plug, 3/4 NPT



Driveline - CRQB

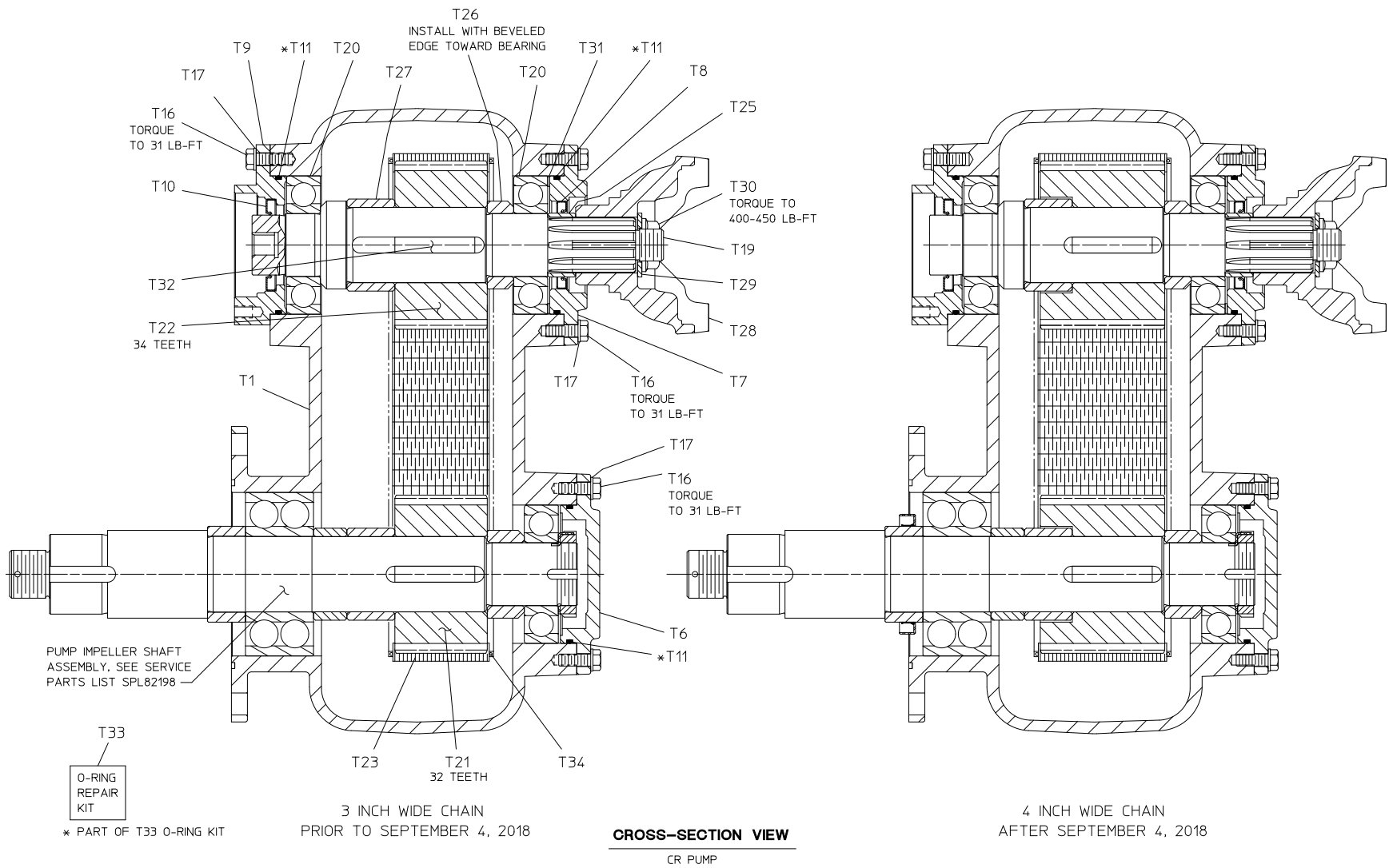
REF. NO.	DESCRIPTION
T6	Bearing Cover
T7	Oil Seal Housing
T8	Oil Seal, 2 x 2-3/4 in.
T9	Hydraulic Pump Adapter
T10	Oil Seal, 1-7/8 x 2-7/8 in.
T11	O-ring, 4 x 4-1/4 in.
T16	Hex Head Screw, 3/8-16 x 1 in.
T17	Lockwasher, 3/8 in.
T19	Drive Shaft
T20	Drive Shaft Ball Bearing
T21	Driven Sprocket
T22	Drive Sprocket

REF. NO.	DESCRIPTION
T23	Chain
T24	Connecting Pin Set
T25	Oil Seal Spacer, .875 in. Wide
T26	Drive Shaft Spacer, .826 in. Wide
T27	Drive Shaft Spacer, 1.500 in. Wide
T28	End Yoke
T29	Yoke Washer, 1 in.
T30	Yoke Nut, 1-20 UNEF
T31	Wave Spring, 110 mm
T32	Square Key, 1/2 x 2-1/2 in.
T33	O-ring Repair Kit
T34	Spirol Pin, 1/6 x 1/4 in.

Cross-Section View, CRQB

REF. NO.	DESCRIPTION
T1	Case Subassembly
T6	Bearing Cover
T7	Oil Seal Housing
T8	Oil Seal, 2 x 2-3/4 in.
T9	Hydraulic Pump Adapter
T10	Oil Seal, 1-7/8 x 2-7/8 in.
T11	O-ring, 4 x 4-1/4 in.
T16	Hex Head Screw, 3/8-16 x 1 in.
T17	Lockwasher, 3/8 in.
T19	Drive Shaft
T20	Drive Shaft Ball Bearing
T21	Driven Sprocket

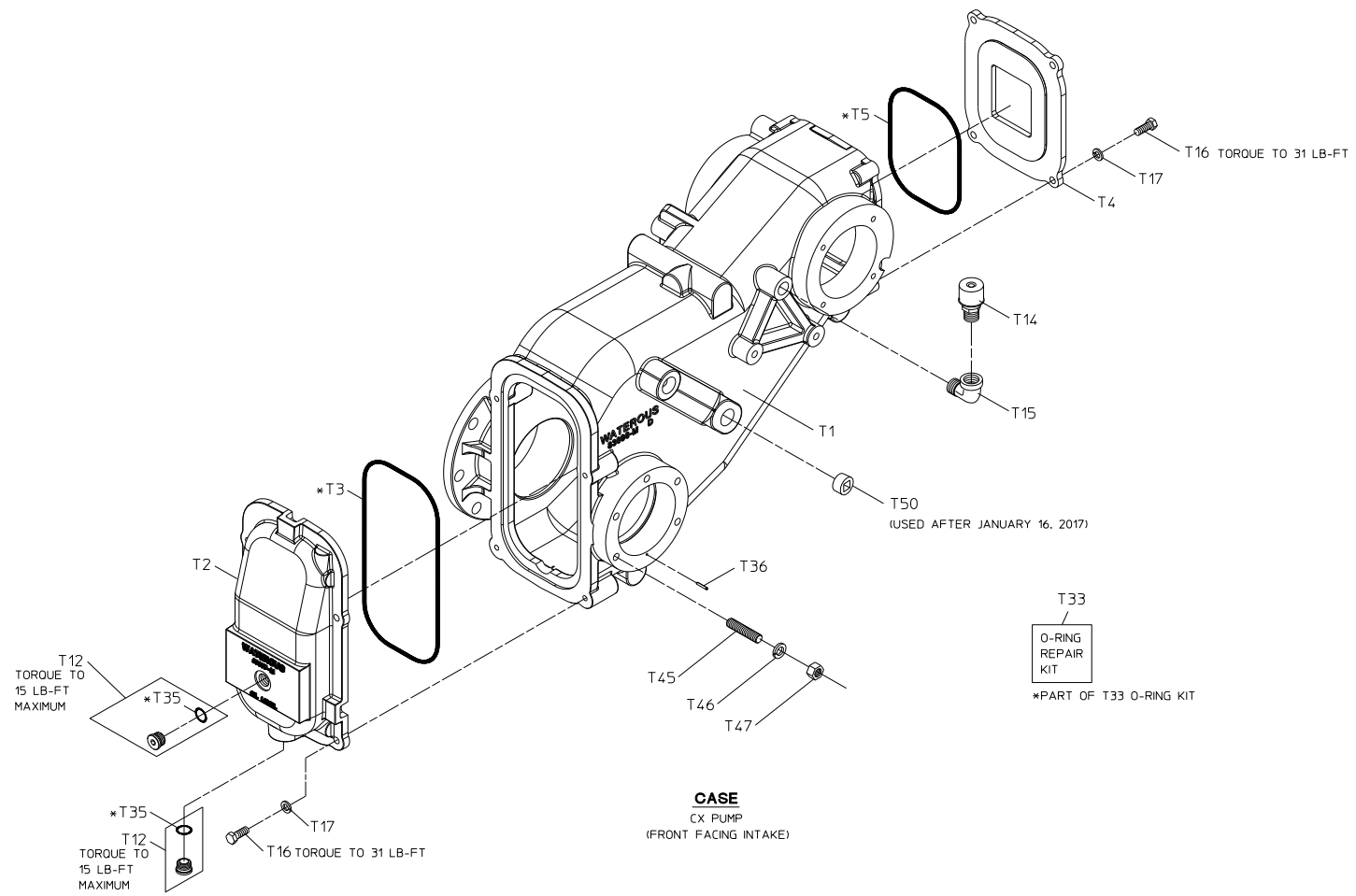
REF. NO.	DESCRIPTION
T22	Drive Sprocket
T23	Chain
T25	Oil Seal Spacer, .875 in. Wide
T26	Drive Shaft Spacer, .826 in. Wide
T27	Drive Shaft Spacer, 1.500 in. Wide
T28	End Yoke
T29	Yoke Washer, 1 in.
T30	Yoke Nut, 1-20 UNEF
T31	Wave Spring, 110 mm
T32	Square Key, 1/2 x 1/2 x 2-1/2 in.
T33	O-ring Repair Kit
T34	Spirol Pin, 1/6 x 1/4 in.



Case – CXVQB (Front Facing Intake)

REF. NO.	DESCRIPTION
T1	Case Subassembly
T2	Pan
T3	O-ring, 10-1/2 x 10-7/8 in.
T4	Top Cover
T5	O-ring, 6-3/4 x 7-1/8 in.
T12	Magnetic Drain Plug, 3/4-16 (Includes T35)
T13	Sight Plug, 3/4 NPT
T14	Breather, 1/2 NPT
T15	Street Elbow, 90 Degrees, 1/2 NPT
T16	Hex Head Screw, 3/8-16 x 1 in.
T17	Lockwasher, 3/8 in.

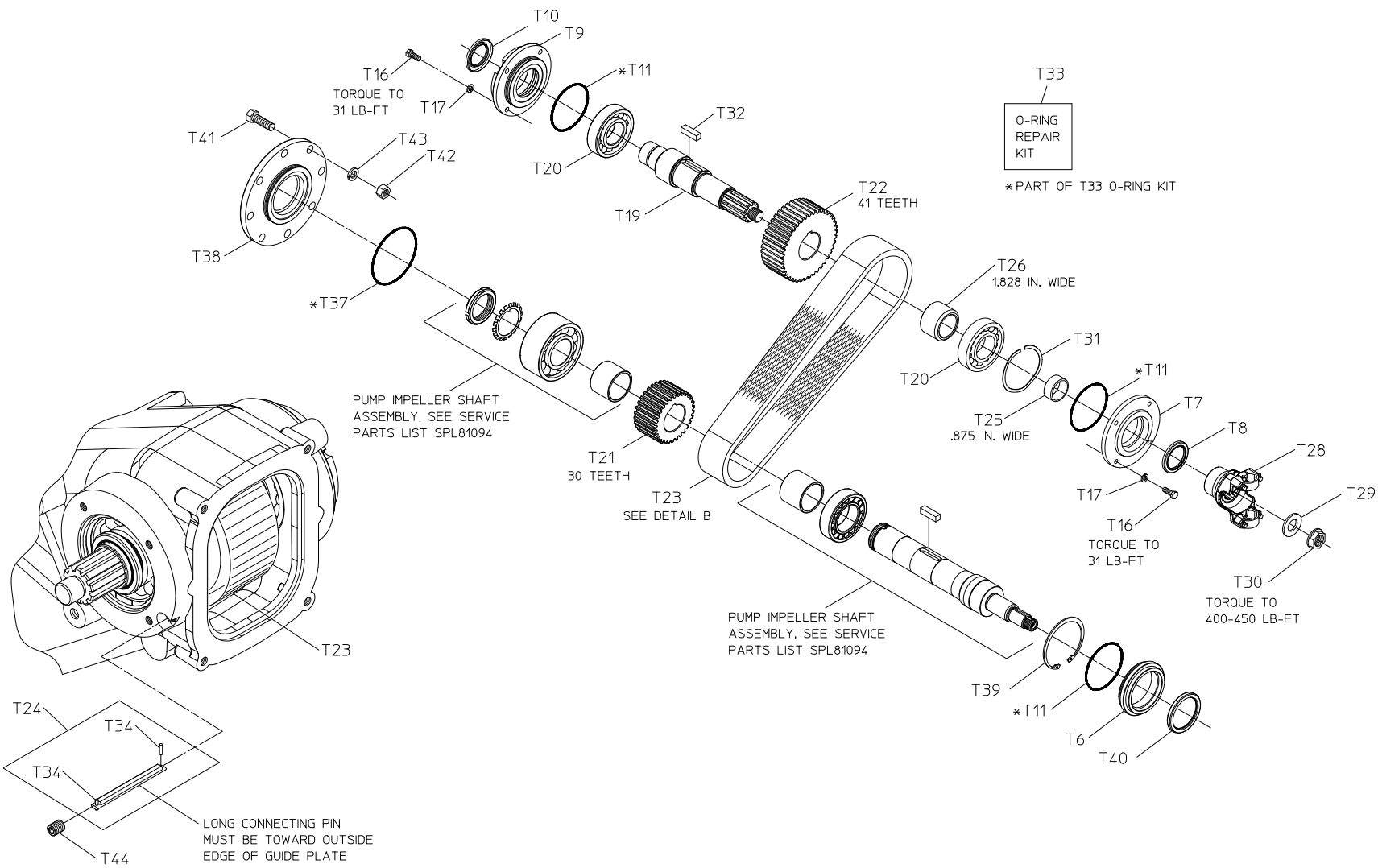
REF. NO.	DESCRIPTION
T33	O-ring Repair Kit
T35	O-ring, 16.4 mm x 20.8 mm
T36	Spirol Pin, 1/8 x 3/4 in.
T45	Stud, 1/2-13 x 2-1/4 in.
T46	Lock Washer, 1/2 in.
T47	Hex Nut, 1/2-13
T50	Pipe Plug, 3/4 NPT



Driveline – CXVQB (Front Facing Intake)

REF. NO.	DESCRIPTION
T6	Bearing Cover
T7	Oil Seal Housing
T8	Oil Seal, 2 x 2-3/4 in.
T9	Hydraulic Pump Adapter
T10	Oil Seal, 1-7/8 x 2-7/8 in.
T11	O-ring, 4 x 4-1/4 in.
T16	Hex Head Screw, 3/8-16 x 1 in.
T17	Lockwasher, 3/8 in.
T19	Drive Shaft
T20	Drive Shaft Ball Bearing
T21	Driven Sprocket
T22	Drive Sprocket

REF. NO.	DESCRIPTION
T23	Chain
T24	Connecting Pin Set
T25	Oil Seal Spacer, .875 in. Wide
T26	Drive Shaft Spacer, 1.828 in. Wide
T28	End Yoke
T29	Yoke Washer, 1 in.
T30	Yoke Nut, 1-20 UNEF
T31	Wave Spring, 110 mm
T32	Square Key, 1/2 x 1-3/4 in.
T33	O-ring Repair Kit
T34	Spirol Pin, 1/6 x 1/4 in.
T37	O-ring, 4-7/8 x 5-1/8 in.
T38	Bearing Cover
T39	Retaining Ring
T40	Oil Seal, 2-3/4 x 3-1/2 in.
T41	Hex Head Screw, 5/8-11 x 2 in.
T42	Hex Nut, 5/8-11
T43	Lock Washer, 5/8 in.
T44	Set Screw, 1/2-20 x 5/8 in.



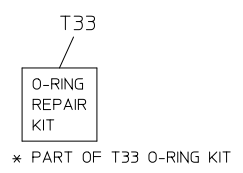
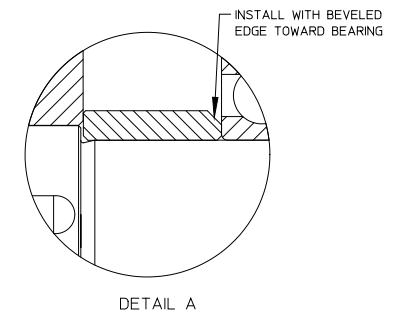
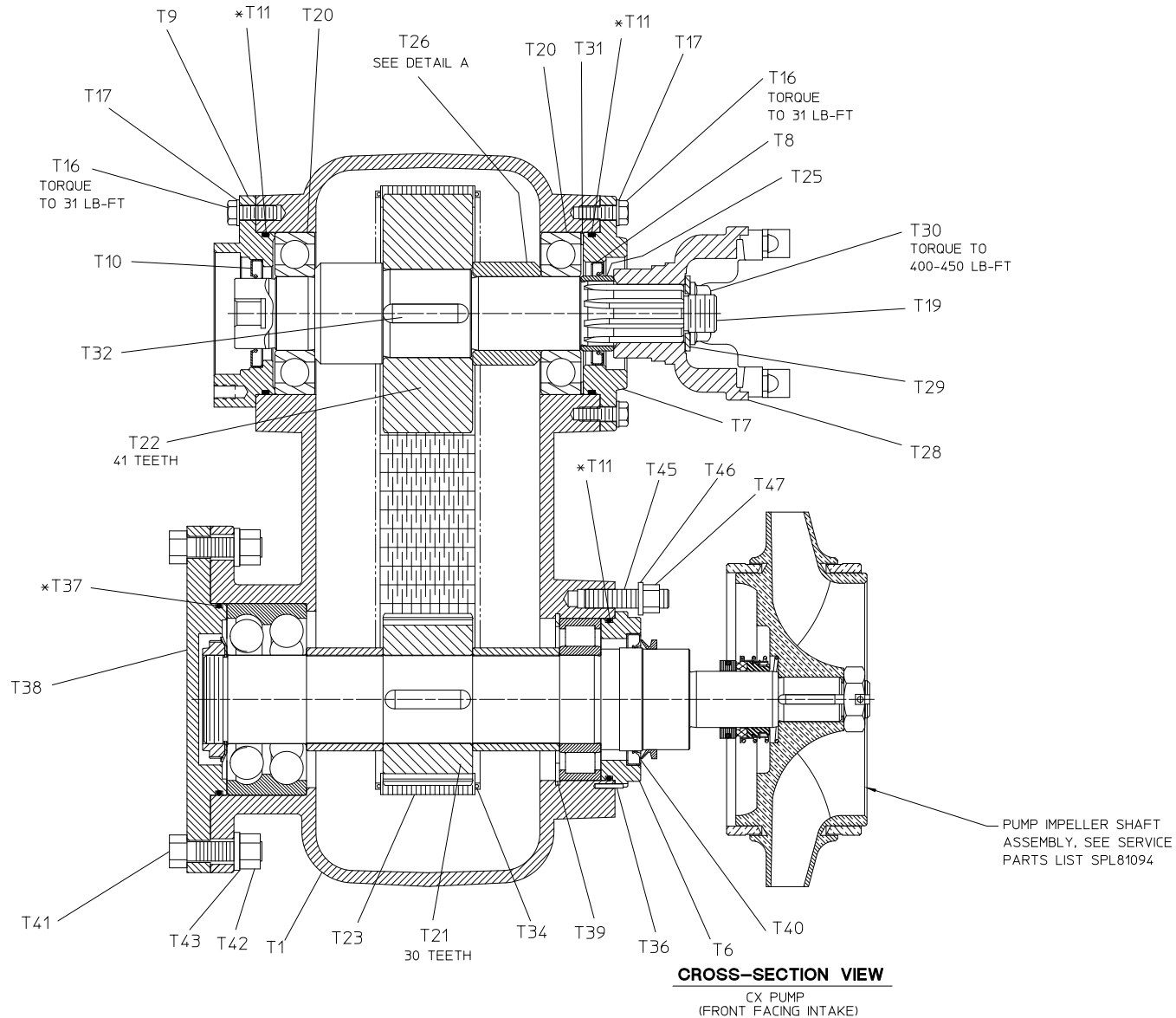
DETAIL B

DRIVELINE
 CX PUMP
 (FRONT FACING INTAKE)

Cross-Section View, CXVQB (Front Facing Intake)

REF. NO.	DESCRIPTION
T1	Case Subassembly
T6	Bearing Cover
T7	Oil Seal Housing
T8	Oil Seal, 2 x 2-3/4 in.
T9	Hydraulic Pump Adapter
T10	Oil Seal, 1-7/8 x 2-7/8 in.
T11	O-ring, 4 x 4-1/4 in.
T16	Hex Head Screw, 3/8-16 x 1 in.
T17	Lockwasher, 3/8 in.
T19	Drive Shaft
T20	Drive Shaft Ball Bearing
T21	Driven Sprocket
T22	Drive Sprocket
T23	Chain
T25	Oil Seal Spacer, .875 in. Wide
T26	Drive Shaft Spacer, 1.828 in. Wide
T28	End Yoke

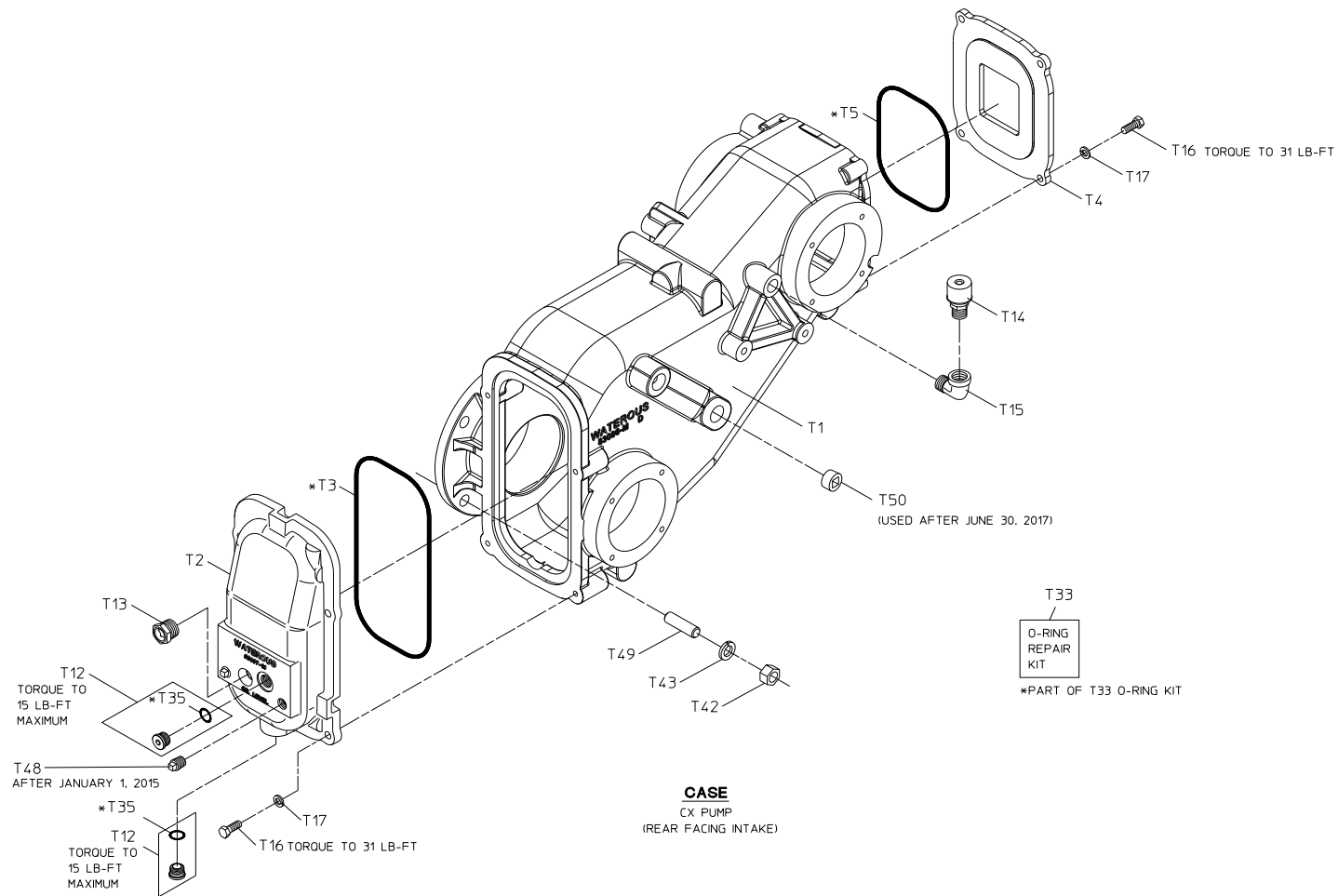
REF. NO.	DESCRIPTION
T29	Yoke Washer, 1 in.
T30	Yoke Nut, 1-20 UNEF
T31	Wave Spring, 110 mm
T32	Square Key, 1/2 x 1/2 x 2-1/2 in.
T33	O-ring Repair Kit
T34	Spirol Pin, 1/6 x 1/4 in.
T36	Spirol Pin, 1/8 x 3/4 in.
T37	O-ring, 4-7/8 x 5-1/8 in.
T38	Bearing Cover
T39	Retaining Ring
T40	Oil Seal
T41	Hex Head Screw, 5/8-11 x 2 in.
T42	Hex Nut, 5/8-11
T43	Lock Washer, 5/8 in.
T45	Stud, 1/2-13 x 2-1/4 in.
T46	Lock Washer, 1/2 in.
T47	Hex Nut, 1/2-13



Case – CXVQB (Rear Facing Intake)

REF. NO.	DESCRIPTION
T1	Case Subassembly
T2	Pan
T3	O-ring, 10-1/2 x 10-7/8 in.
T4	Top Cover
T5	O-ring, 6-3/4 x 7-1/8 in.
T12	Magnetic Drain Plug, 3/4-16 (Includes T35)
T13	Sight Plug, 3/4 NPT
T14	Breather, 1/2 NPT
T15	Street Elbow, 90 Degrees, 1/2 NPT
T16	Hex Head Screw, 3/8-16 x 1 in.
T17	Lockwasher, 3/8 in.

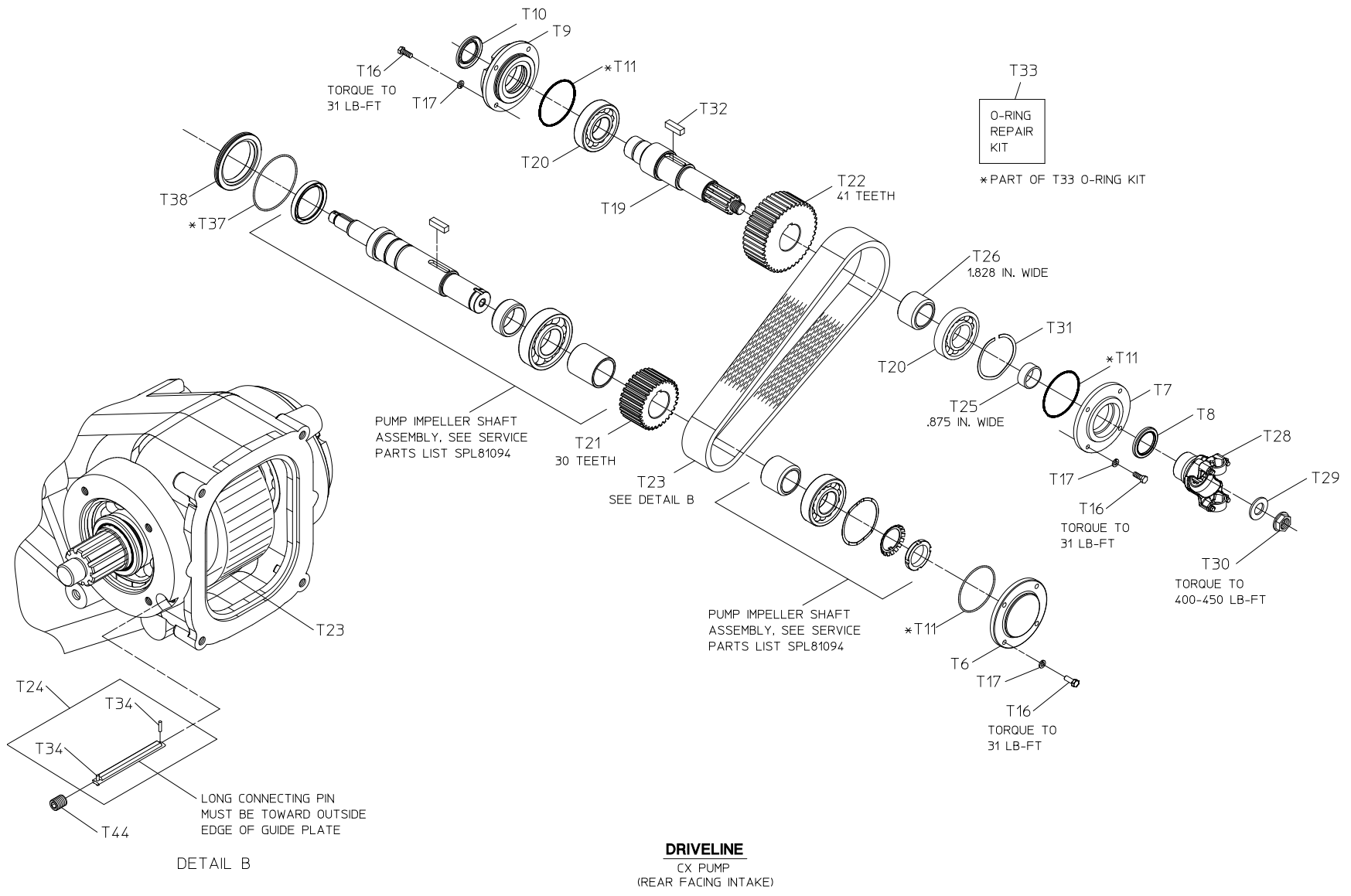
REF. NO.	DESCRIPTION
T33	O-ring Repair Kit
T35	O-ring, 16.4 mm x 20.8 mm
T42	Hex Nut, 5/8-18
T43	Lock Washer, 5/8
T48	Pipe Plug, 1/2 NPT
T49	Stud, 5/8-18 x 2-3/16
T50	Pipe Plug, 3/4 NPT



Driveline – CXVQB (Rear Facing Intake)

REF. NO.	DESCRIPTION
T6	Bearing Cover
T7	Oil Seal Housing
T8	Oil Seal, 2 x 2-3/4 in.
T9	Hydraulic Pump Adapter
T10	Oil Seal, 1-7/8 x 2-7/8 in.
T11	O-ring, 4 x 4-1/4 in.
T16	Hex Head Screw, 3/8-16 x 1 in.
T17	Lockwasher, 3/8 in.
T19	Drive Shaft
T20	Drive Shaft Ball Bearing
T21	Driven Sprocket
T22	Drive Sprocket

REF. NO.	DESCRIPTION
T23	Chain
T24	Connecting Pin Set
T25	Oil Seal Spacer, .875 in. Wide
T26	Drive Shaft Spacer, 1.828 in. Wide
T28	End Yoke
T29	Yoke Washer, 1 in.
T30	Yoke Nut, 1-20 UNEF
T31	Wave Spring, 110 mm
T32	Square Key, 1/2 x 1-3/4 in.
T33	O-ring Repair Kit
T34	Spirol Pin, 1/6 x 1/4 in.
T37	O-ring, 4-7/8 x 5-1/8 in.
T38	Oil Seal Housing
T44	Set Screw, 1/2-20 x 5/8 in.



Cross-Section View, CXVQB (Rear Facing Intake)

REF. NO.	DESCRIPTION
T1	Case Subassembly
T6	Bearing Cover
T7	Oil Seal Housing
T8	Oil Seal, 2 x 2-3/4 in.
T9	Hydraulic Pump Adapter
T10	Oil Seal, 1-7/8 x 2-7/8 in.
T11	O-ring, 4 x 4-1/4 in.
T16	Hex Head Screw, 3/8-16 x 1 in.
T17	Lockwasher, 3/8 in.
T19	Drive Shaft
T20	Drive Shaft Ball Bearing
T21	Driven Sprocket
T22	Drive Sprocket
T23	Chain
T25	Oil Seal Spacer, .875 in. Wide
T26	Drive Shaft Spacer, 1.828 in. Wide
T28	End Yoke

REF. NO.	DESCRIPTION
T29	Yoke Washer, 1 in.
T30	Yoke Nut, 1-20 UNEF
T31	Wave Spring, 110 mm
T32	Square Key, 1/2 x 1/2 x 2-1/2 in.
T33	O-ring Repair Kit
T34	Spirol Pin, 1/6 x 1/4 in.
T37	O-ring, 4-7/8 x 5-1/8 in.
T38	Oil Seal Housing
T39	Retaining Ring
T42	Hex Nut, 5/8-18
T43	Lock Washer, 5/8 in.
T49	Stud, 5/8-18 x 2-3/16

