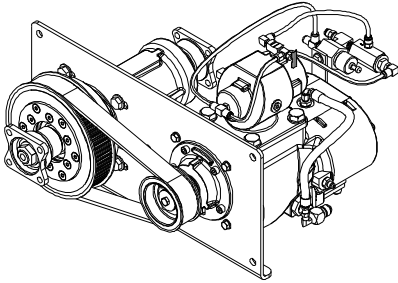


PTO Compressor Kit (Belt Drive)

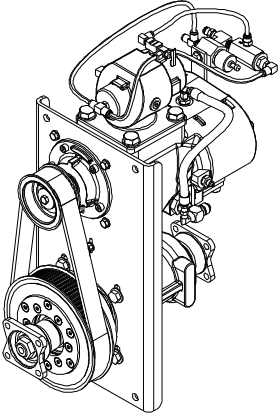
Service Parts List

Covers the following Models:

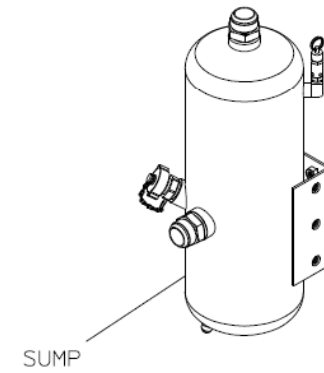
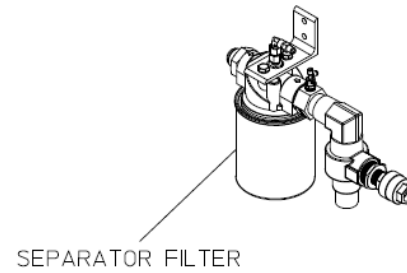
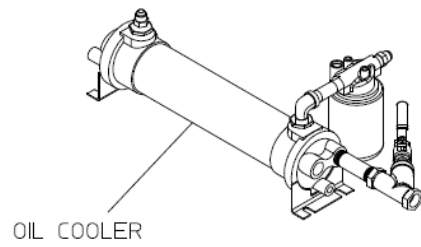
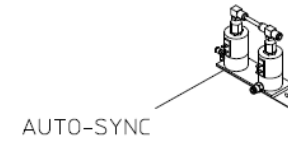
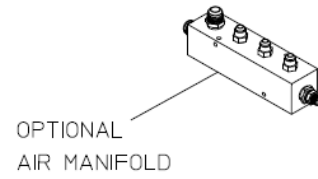
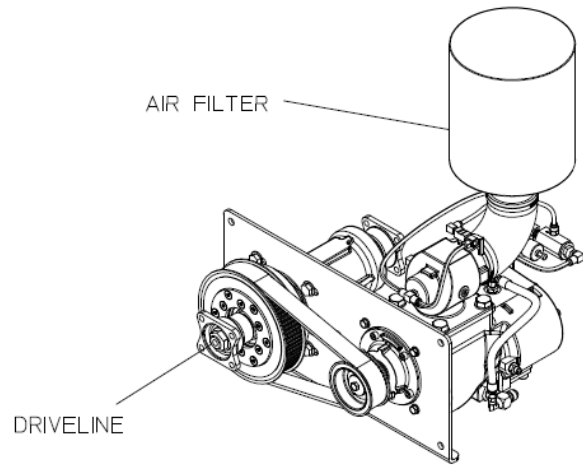
CAFS Type			See Index on Page
Traditional	Generated		
	One-Step	Eclipse GEN 2.0	
100-B	100-OSB	100-ECLB	3



HORIZONTAL DRIVE



VERTICAL DRIVE



AIR
PRESSURE
GAUGE

OPTIONAL
AIR PRESSURE
GAUGE KIT

HOSES
AND
FITTINGS

OPTIONAL
HOSE AND
FITTING KIT

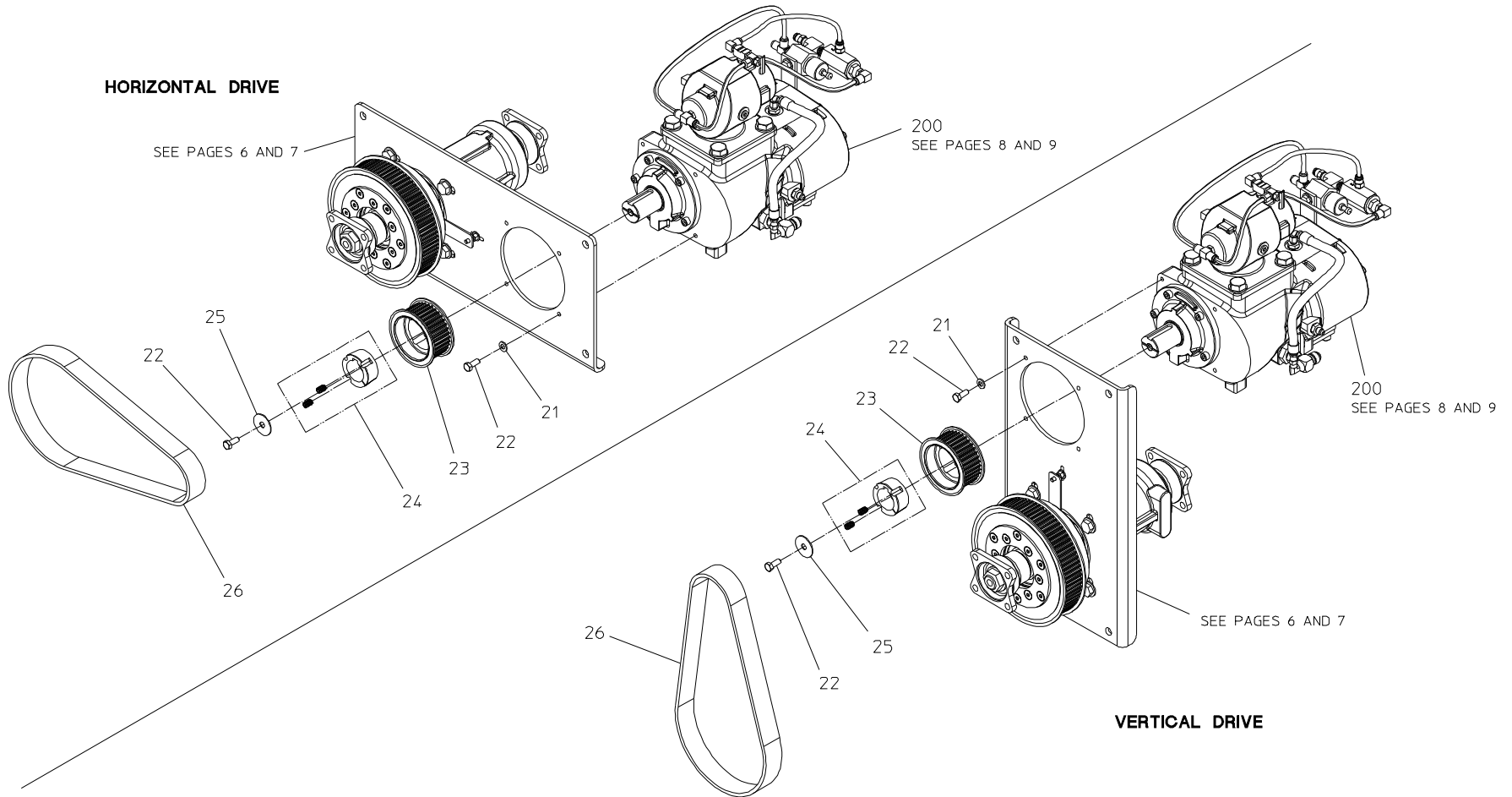
Index:

Component	Model			See Pages				Air Filter and Mounting Bracket
	Traditional CAFS	Generated CAFS		Mounting	Compressor		PMC Variations	
		One-Step	Eclipse GEN 2.0		Driveline	Components		
Compressor	100-B	100-OSB	100-ECLB	4, 5	6, 7	8, 9	10, 11	12, 13
Panel Components	All Models			14, 15				
Schematic	Air	Traditional CAFS, Model 100-B		16, 17				
		Generated CAFS Models 100-OSB, 100-ECLB	Without High Rise	18, 19				
			With High Rise	20, 21				
	Hydraulic	Model 100-B		22, 23				
		Models 100-OSB, 100-ECLB		24, 25				
	Electrical	Traditional CAFS, Model 100-B		26, 27				
		Generated CAFS, Models 100-OSB, 100-ECLB		See Foam Generator Service Parts List				
Voltage Converter, 24V Systems Only (All Models)		28, 29						
Auto-Sync	See Auto-Sync Service Parts List Traditional CAFS Model 100-B Generated CAFS with High Rise option Only, Models 100-OSB, 100-ECLB							
Balance Valve	See Balance Valve Service Parts List, Traditional CAFS Model 100-B Only							
Oil Cooler	See Oil Cooler Service Parts List (All Models)							
Separator Filter	See Separator Filter Service Parts List (All Models)							
Sump	See Sump Service Parts List (All Models)							
Air Manifold	Optional from Waterous, may have been furnished by OEM.							
CAFS Discharge	See the following Service Parts Lists: Air Manifolds ICS Valves Air Discharge Kits Hose and Fitting Kits Air Pressure Gauge							
Air Pressure Gauge								
Hoses and Fittings								

Compressor – Mounting
Models 100-B, 100-OSB, 100-ECLB

REF NO.	DESCRIPTION
21	Flat Washer, 8mm
22	Hex Hd Screw, M8-1.25 x 20mm
23	Driven Sprocket, 36T
24	Taper Lock Bushing, 38mm x 1610

REF NO.	DESCRIPTION
25	Fender Washer, 3/8 x 1-1/2
26	Poly Chain Belt
200	Compressor Ass'y

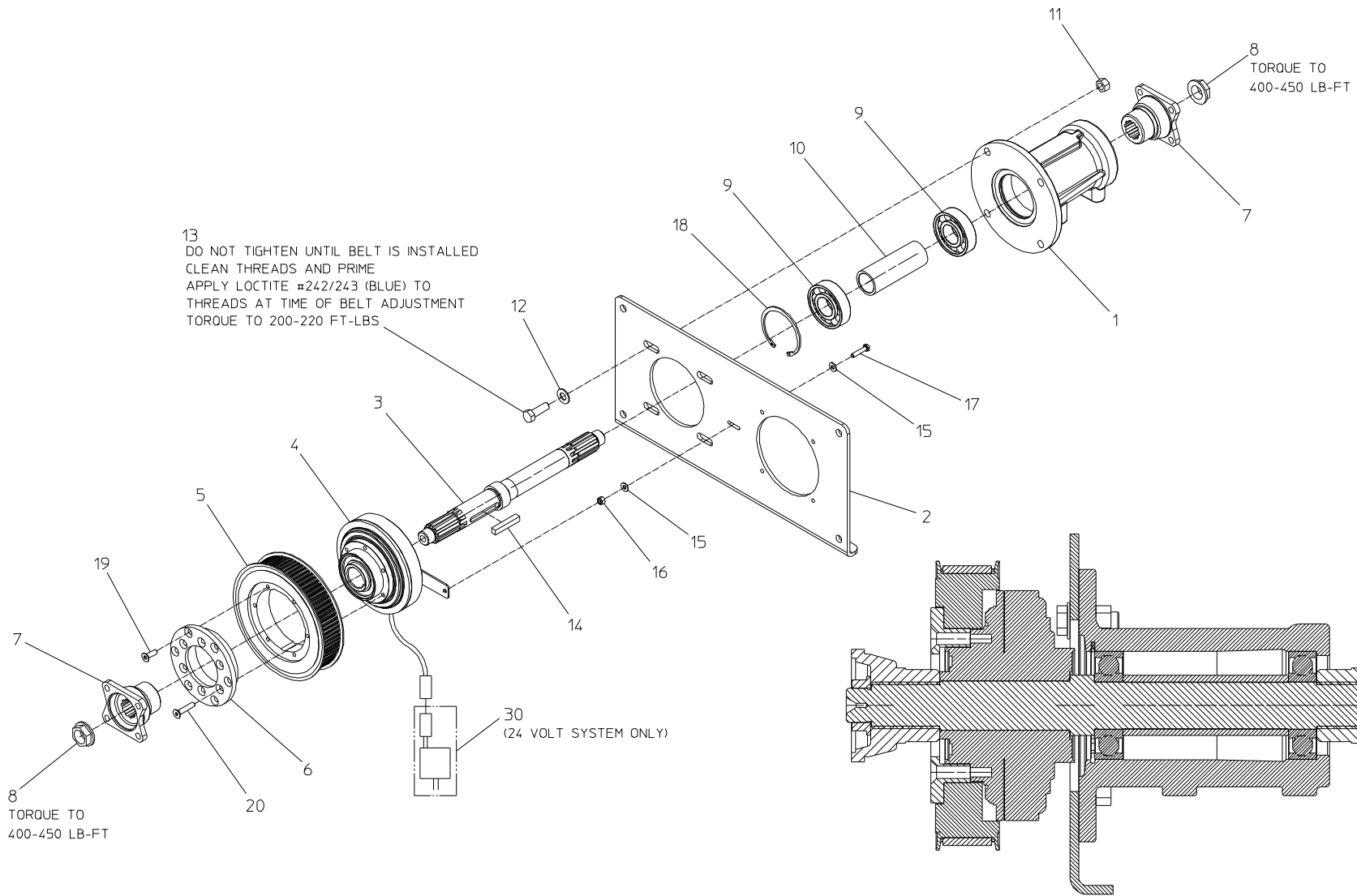


COMPRESSOR – MOUNTING
 MODELS: 100-B, 100-OSB, 100-ECLB

Compressor – Driveline
Models 100-B, 100-OSB, 100-ECLB

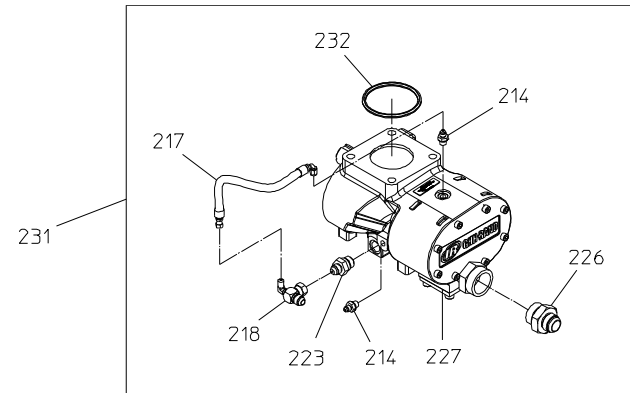
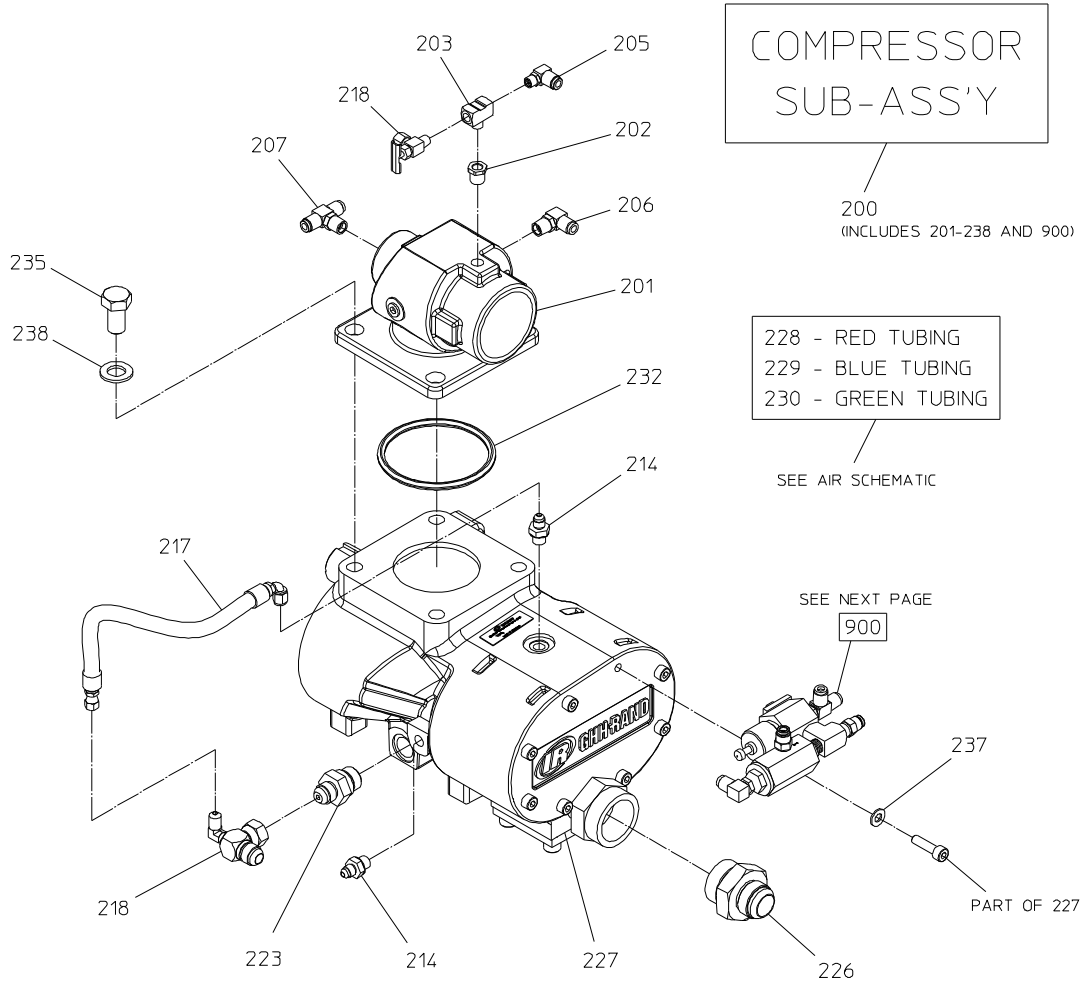
REF NO.	DESCRIPTION
1	Bearing Housing
2	Mounting Bracket
3	Input Shaft
4	Clutch
5	Drive Sprocket
6	Sprocket Adapter
7	Companion Flange or End Yoke
8	Lock Nut, 1-20 UNEF
9	Single Row Ball Bearing
10	Bearing Space
11	Hex Nut, ½-13

REF NO.	DESCRIPTION
12	Plain Washer, ½ in.
13	Hex Head Screw, ½-13 x 1-1/2 in.
14	Square Key, 3/8 x 2-1/4 in.
15	Plain Washer, ¼ in.
16	Hex Nut, Nylok, ¼-20
17	Hex Hd Screw, ¼-20 x 1-1/4 in.
18	Retaining Ring
19	Socket Hd Screw, M8-1.25 x 25mm
20	Socket Hd Screw, M8-1.25 x 40mm
30	Voltage Converter, 24 to 12 Volt, 10 amp

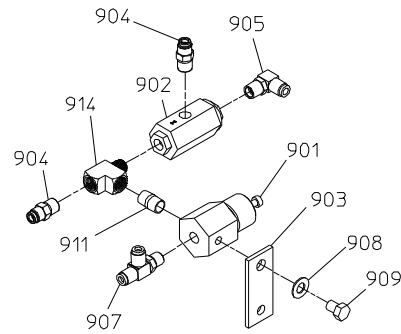


COMPRESSOR - DRIVELINE
MODELS: 100-B, 100-OSB, 100-ECLB

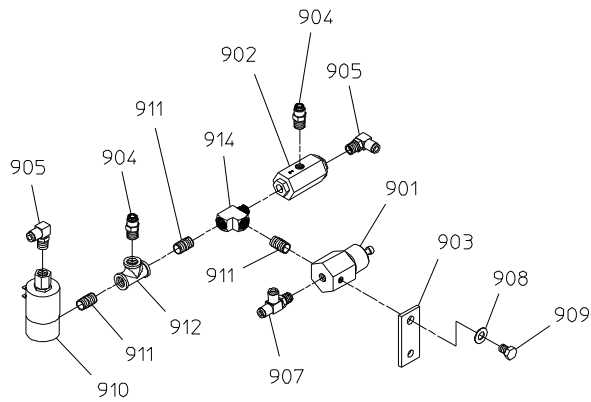
CROSS-SECTION VIEW



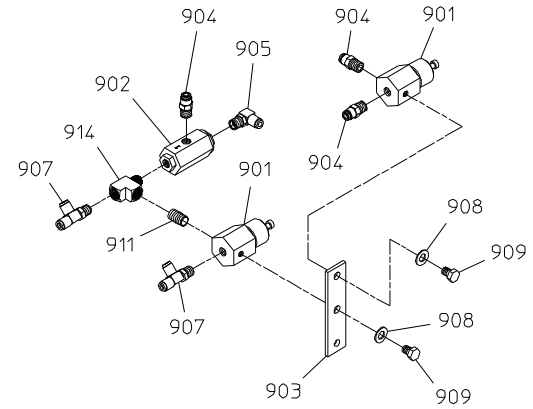
COMPRESSOR - COMPONENTS
MODELS: 100-B, 100-OSB, 100-ECLB



TRADITIONAL CAFS, MODEL 100-B



WITHOUT HIGH RISE OPTION



WITH HIGH RISE OPTION

ONE-STEP CAFS, MODEL 100-OSB
ECLIPSE GEN 2.0 CAFS, MODEL 100-ECLB

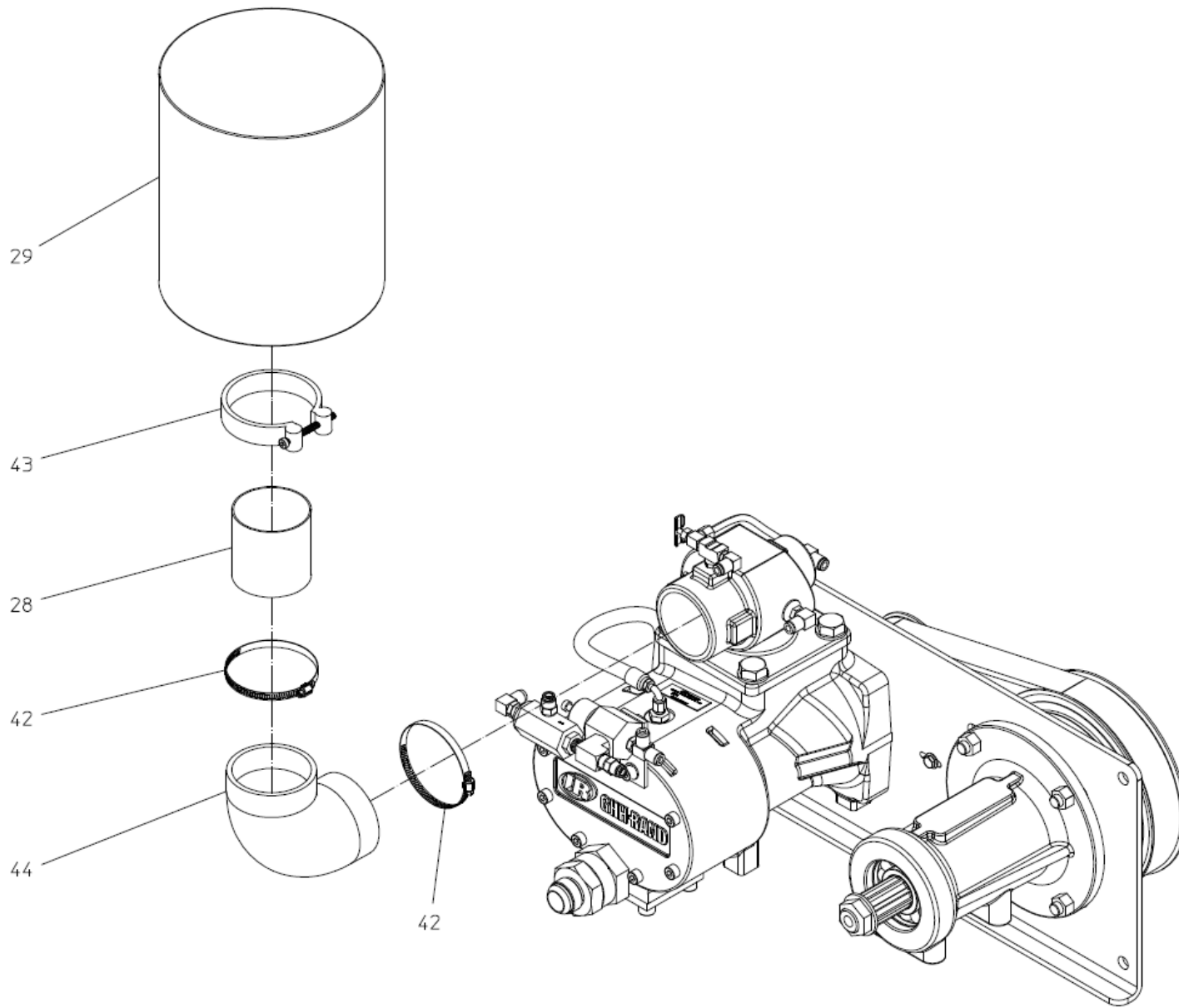
COMPRESSOR – PMC VARIATIONS

MODELS 100-B, 100-OSB, 100-ECLB

Compressor – Air Filter

REF NO.	DESCRIPTION
28	Air Inlet Tube, 3 in. x 48 in.
29	Air Filter, 3 in.
42	Clamp, 3-1/2 in.

REF NO.	DESCRIPTION
43	T Bolt Clamp, 3-1/2 in.
44	Rubber Elbow, 90 Deg., 3 in.



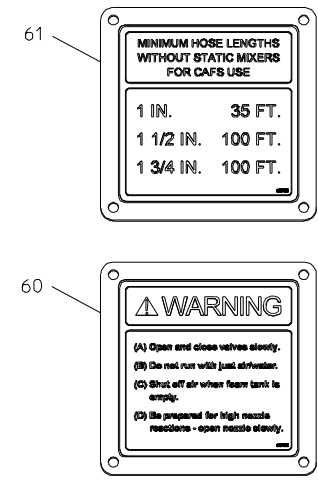
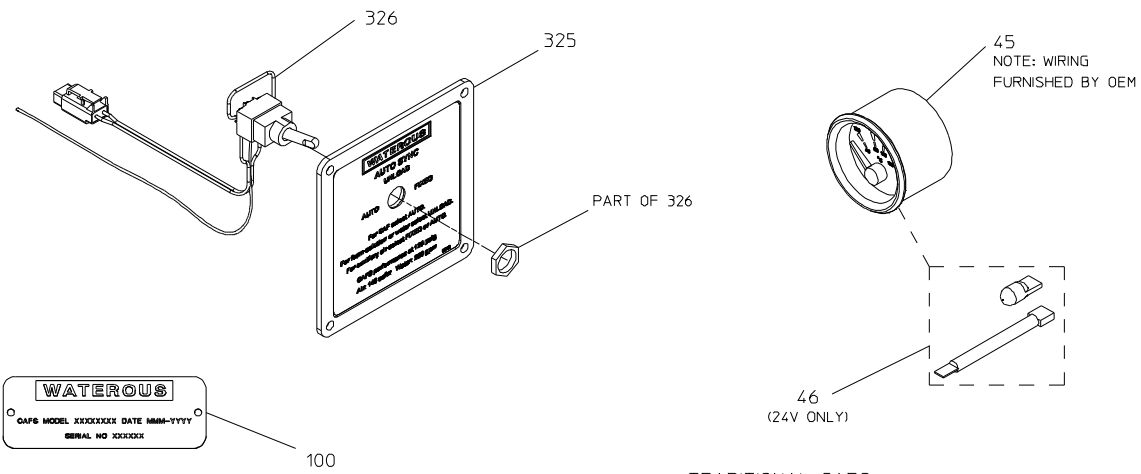
COMPRESSOR – AIR FILTER

NOTE: BASED ON INSTALLATION. CONFIGURATION MAY VARY FROM DIAGRAM

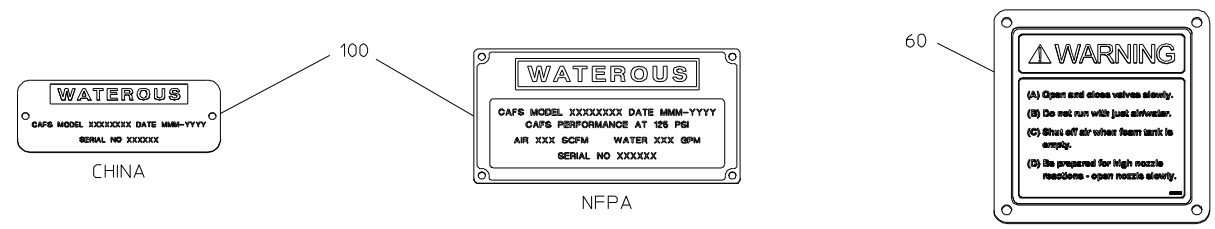
Panel Components

REF NO.	DESCRIPTION
45	Gauge-Oil Temperature, Dual Scale
46	Kit-Conversion, Oil Temp Gauge to 24V
60	Plate-Warning, Compressed Air
61	Plate-Hose Length
100	Serial Plate

REF NO.	DESCRIPTION
325	Plate-Electric Auto-Sync
326	Harness-Switch, Electric Auto-Sync



TRADITIONAL CAFS



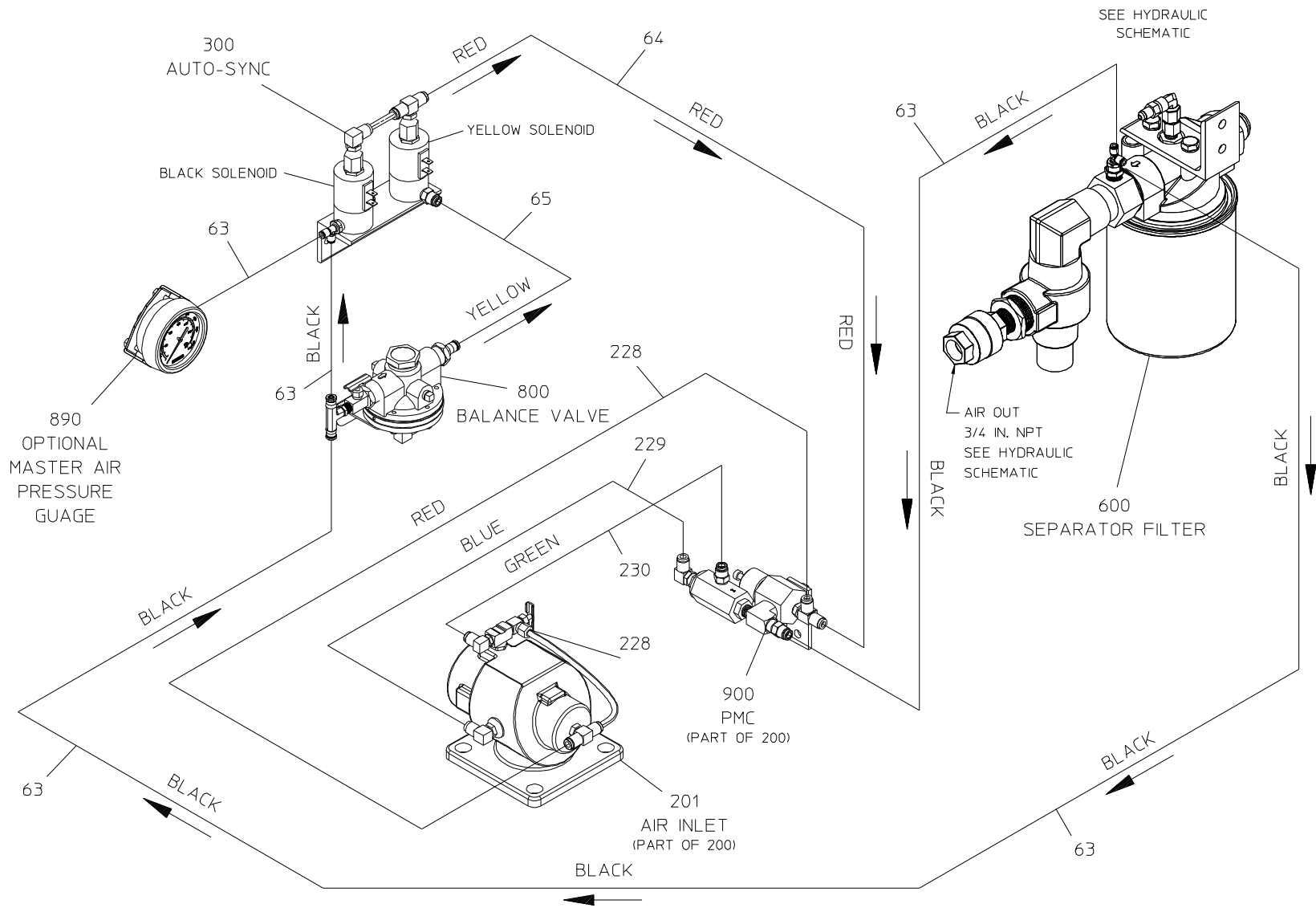
GENERATED CAFS, ONE-STEP AND ECLIPSE GEN 2.0 CAFS

PANEL COMPONENTS

Schematic – Air
Model 100-B

REF NO.	DESCRIPTION
63	Tube-Air Brake, Black, ¼ in. x 180 in. Long (Cut to Suit Application)
64	Tube-Air Brake, Red, ¼ in. x 120 in. Long (Cut to Suit Application)
65	Tube-Air Brake, Yellow, ¼ in. x 120 in. Long (Cut to Suit Application)
201	Inlet-Air
228	Tube-Air Brake, ¼ in. x 24 in., Red (Cut to Suit Application)
229	Tube-Air Brake, ¼ in. x 24 in., Blue (Cut to Suit Application)
230	Tube-Air Brake, ¼ in. x 24 in., Green (Cut to Suit Application)
900	PMC Sub-assembly

REF NO.	DESCRIPTION
300	See Auto-Sync Service Parts List
600	See Separator Filter Service Parts List
800	See Balance Valve Service Parts List
890	See Air Pressure Gauge Service Parts List

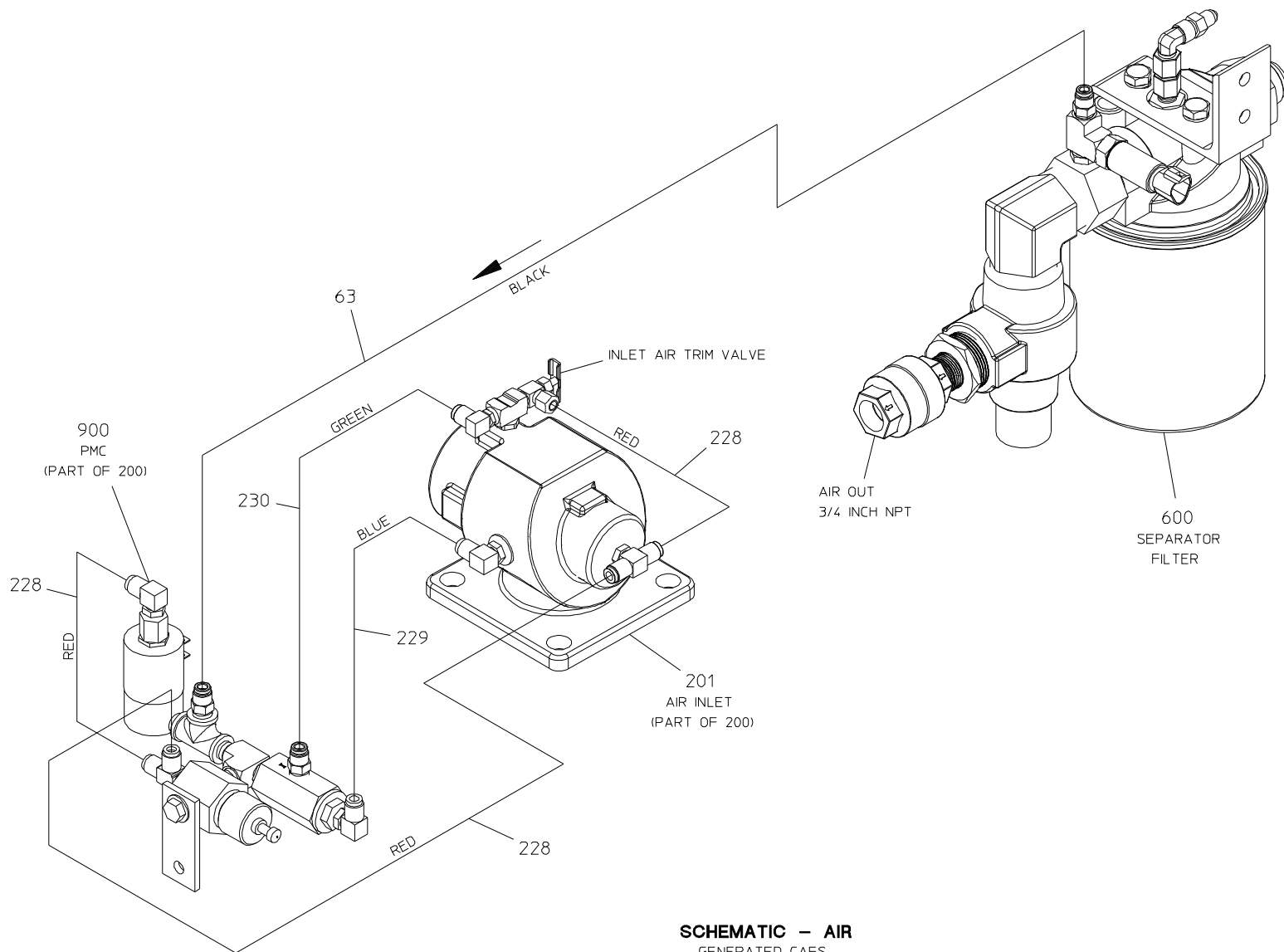


AIR SCHEMATIC
MODEL: 100-B

Schematic – Air
 Model 100-OSB, 100-ECLB
 Without High Rise Option

REF NO.	DESCRIPTION
63	Tube-Air Brake, Black, ¼ in. x 180 in. Long (Cut to Suit Application)
201	Inlet-Air
228	Tube-Air Brake, ¼ in. x 24 in., Red (Cut to Suit Application)
229	Tube-Air Brake, ¼ in. x 24 in., Blue (Cut to Suit Application)
230	Tube-Air Brake, ¼ in. x 24 in., Green (Cut to Suit Application)
600	See Separator Filter Service Parts List
900	PMC Sub-assembly

REF NO.	DESCRIPTION

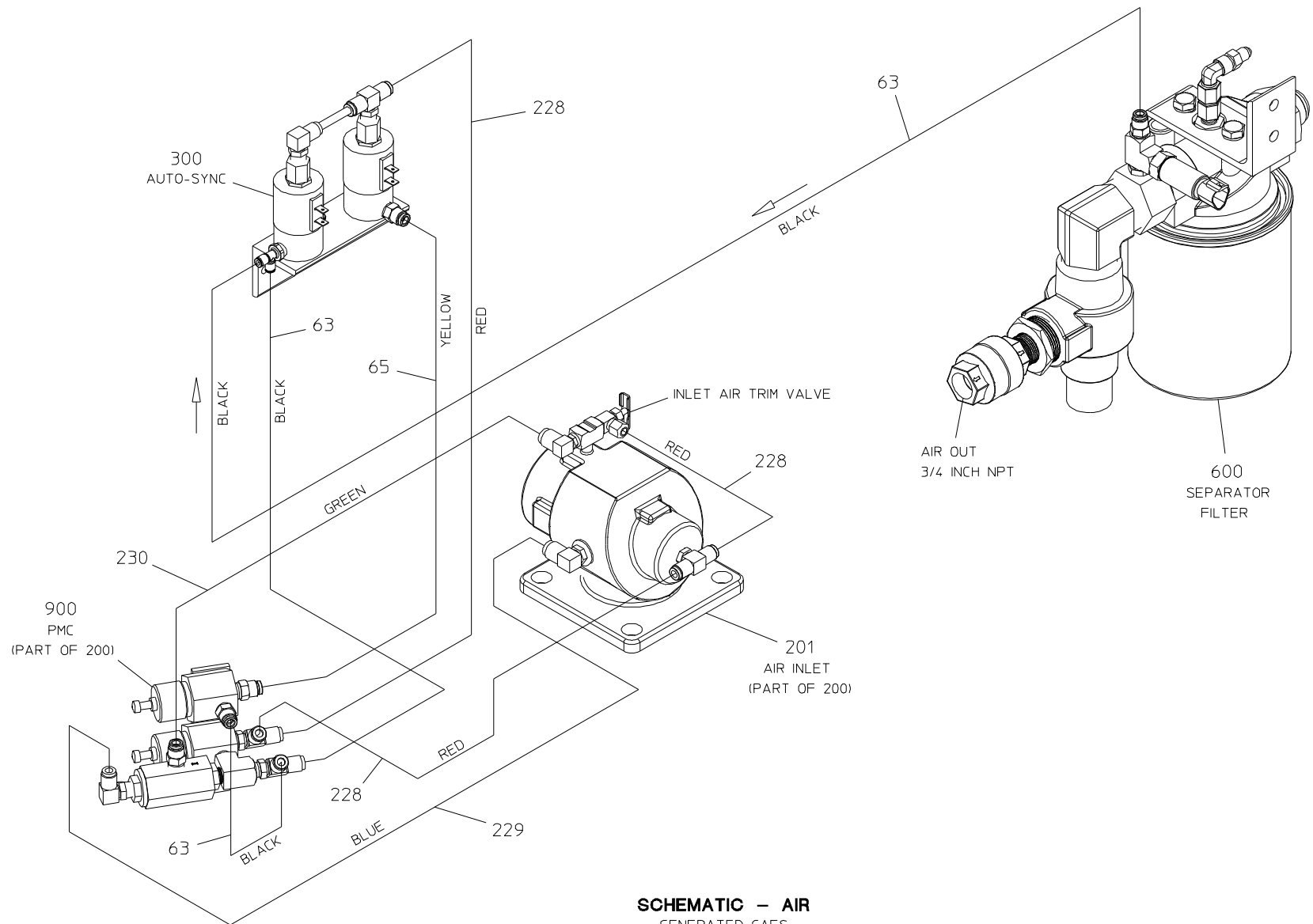


SCHEMATIC – AIR
 GENERATED CAFS
 MODELS 100-OSB, 100-ECLB
 WITHOUT HIGH RISE OPTION

Schematic – Air
 Models 100-OSB, 100-ECLB
 With High Rise Option

REF NO.	DESCRIPTION
63	Tube-Air Brake, Black, ¼ in. x 180 in. Long (Cut to Suit Application)
65	Tube-Air Brake, Yellow, ¼ in. x 120 in. Long (Cut to Suit Application)
201	Inlet-Air
228	Tube-Air Brake, ¼ in. x 24 in., Red (Cut to Suit Application)
229	Tube-Air Brake, ¼ in. x 24 in., Blue (Cut to Suit Application)
230	Tube-Air Brake, ¼ in. x 24 in., Green (Cut to Suit Application)
300	See Auto-Sync Service Parts List
600	See Separator Filter Service Parts List

REF NO.	DESCRIPTION
900	PMC Sub-assembly



SCHEMATIC - AIR
 GENERATED CAFS
 MODELS 100-OSB, 100-ECLB
 WITH HIGH RISE OPTION

Schematic – Hydraulic
Model 100-B

REF NO.	DESCRIPTION
62	Valve-Check, ½ in. Bronze
200	Compressor Sub-ass'y

REF NO.	DESCRIPTION
400	See Oil Cooler Service Parts List
500	See Sump Service Parts List
600	See Separator Filter Service Parts List
800	See Balance Valve Service Parts List
850	See Air Manifold Service Parts List

Note:

Air Manifold, Hoses and Fittings are optional from Waterous and may have been furnished by OEM.
See Air Manifold and Hose & Fitting Kit Service Parts List.

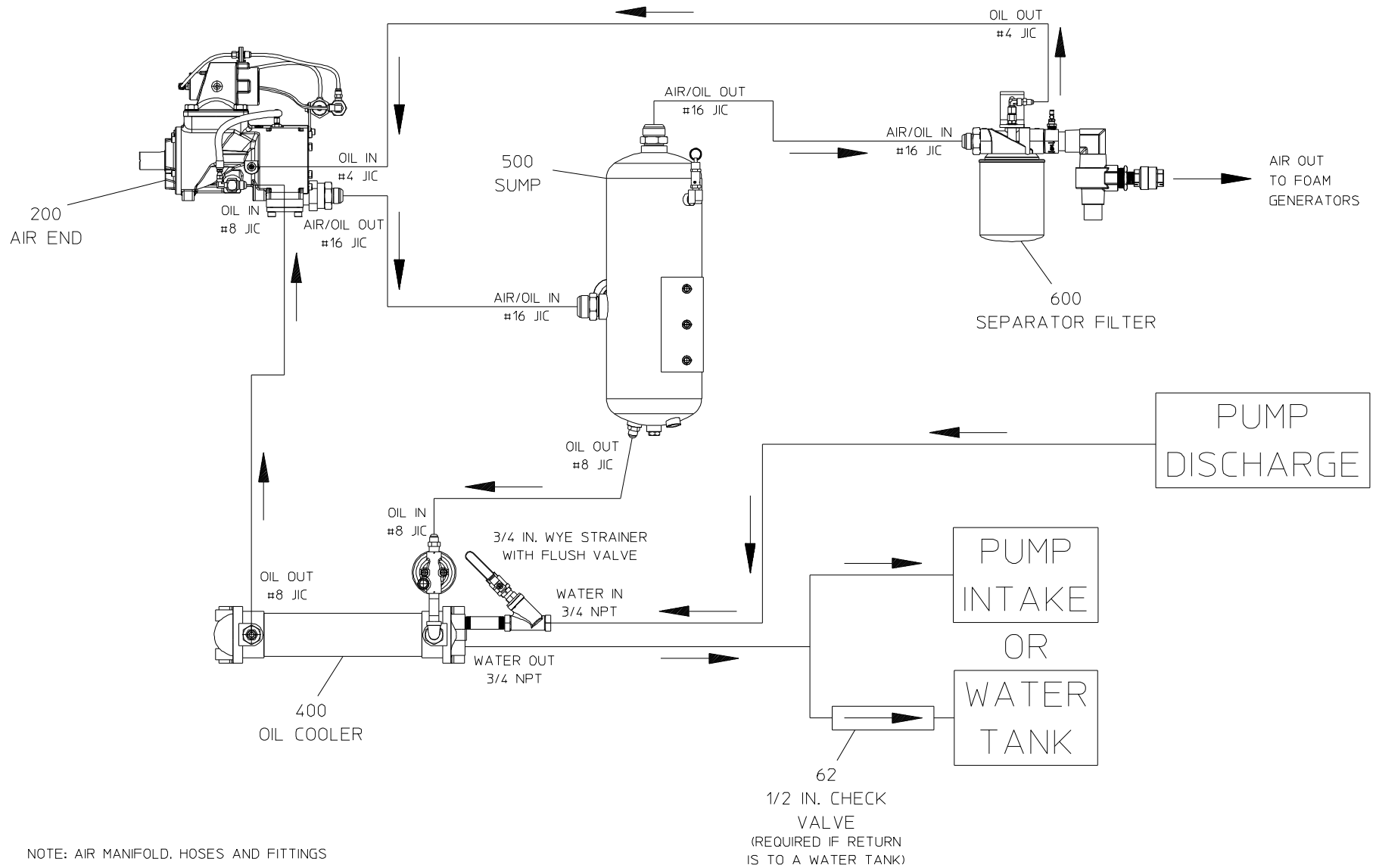
Schematic – Hydraulic
Models 100-OSB, 100-ECLB

REF NO.	DESCRIPTION
62	Valve-Check, ½ in. Bronze
200	Compressor Sub-ass'y

REF NO.	DESCRIPTION
400	See Oil Cooler Service Parts List
500	See Sump Service Parts List
600	See Separator Filter Service Parts List

Note:

Hoses and Fittings are optional from Waterous and may have been furnished by OEM.
See Air Manifold and Hose & Fitting Kit Service Parts List.



NOTE: AIR MANIFOLD, HOSES AND FITTINGS ARE OPTIONAL FROM WATEROUS. MAY HAVE BEEN FURNISHED BY OEM. SEE AIR MANIFOLD AND HOSE AND FITTING KIT PARTS LIST.

HYDRAULIC SCHEMATIC
 MODELS 100-OSB, 100-ECLB

Schematic – Electrical Traditional CAFS

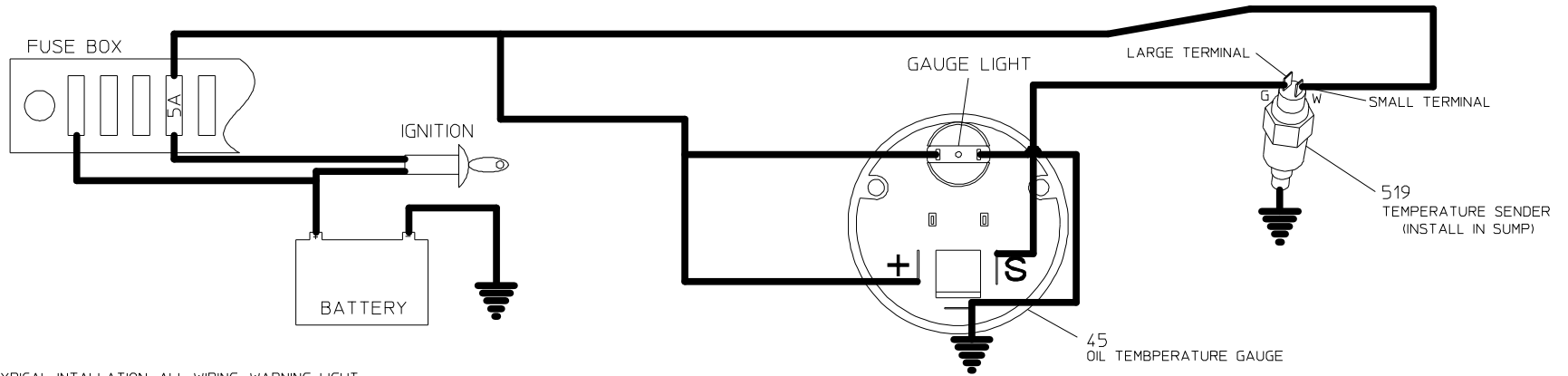
REF NO.	DESCRIPTION
45	Gauge-Oil Temperature, Dual Scale
519	Sender-Temperature (Also See Sump Service Parts List)

REF NO.	DESCRIPTION
301	Valve-Solenoid
308	Harness-Wiring, Electric Auto-Sync
325	Plate-Electric Auto-Sync
326	Harness-Switch, Electric Auto-Sync
327	Harness-Extension, Auto-Sync, 15 Feet

Also See Auto-Sync
Service Parts List

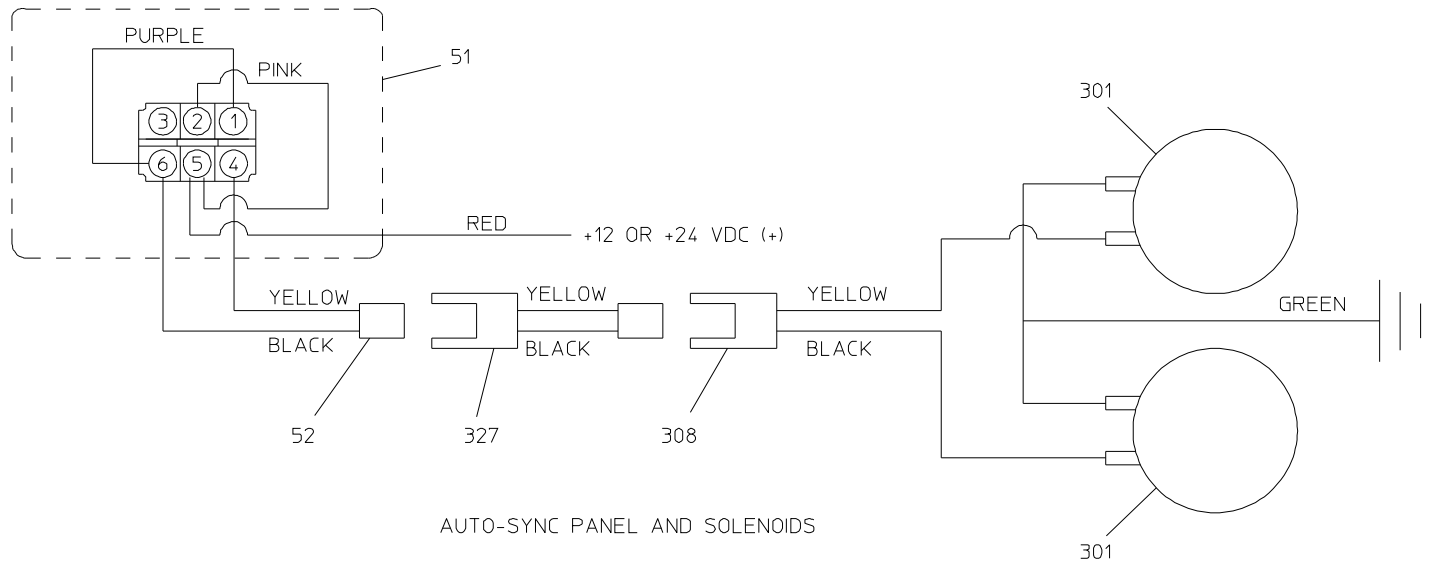
Note:

See Foam Generator Service Parts List for Generated CAFS Electrical Schematic.



NOTE: TYPICAL INTALLATION, ALL WIRING, WARNING LIGHT, FUSE, IGNITION SWITCH AND BATTERY FURNISHED BY OEM

SUMP TEMPERATURE SENDER AND OIL TEMPERATURE GAUGE



AUTO-SYNC PANEL AND SOLENOIDS

SCHEMATIC – ELECTRICAL

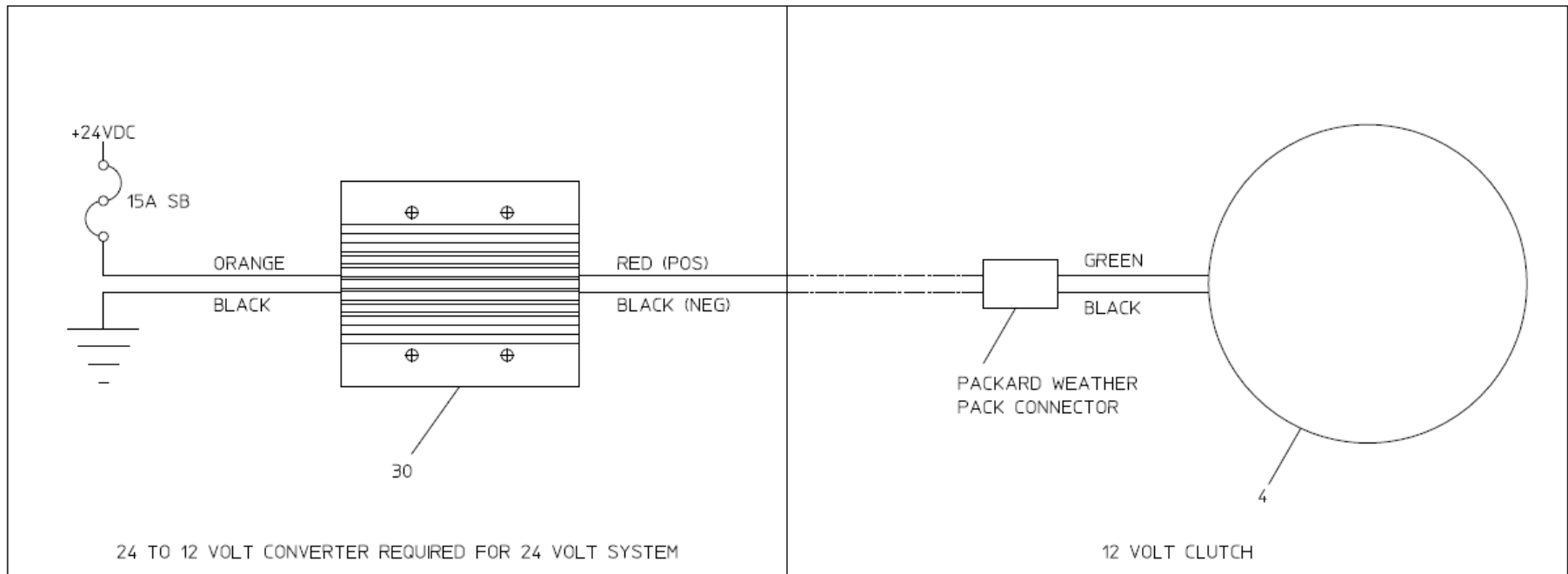
TRADITIONAL CAFS

FOR GENERATED CAFS, SEE FOAM GENERATOR SERVICE PARTS LIST

Schematic – Electrical
Voltage Converter (24 Volt Systems Only)
Used with Traditional and Generated CAF Systems

REF NO.	DESCRIPTION
4	Clutch

REF NO.	DESCRIPTION
30	Voltage Converter, 24 to 12 Volt, 10 amp



24 TO 12 VOLT CONVERTER REQUIRED FOR 24 VOLT SYSTEM

12 VOLT CLUTCH

VOLTAGE CONVERTER
 (24 VOLT SYSTEMS ONLY)
 SCHEMATIC – ELECTRICAL