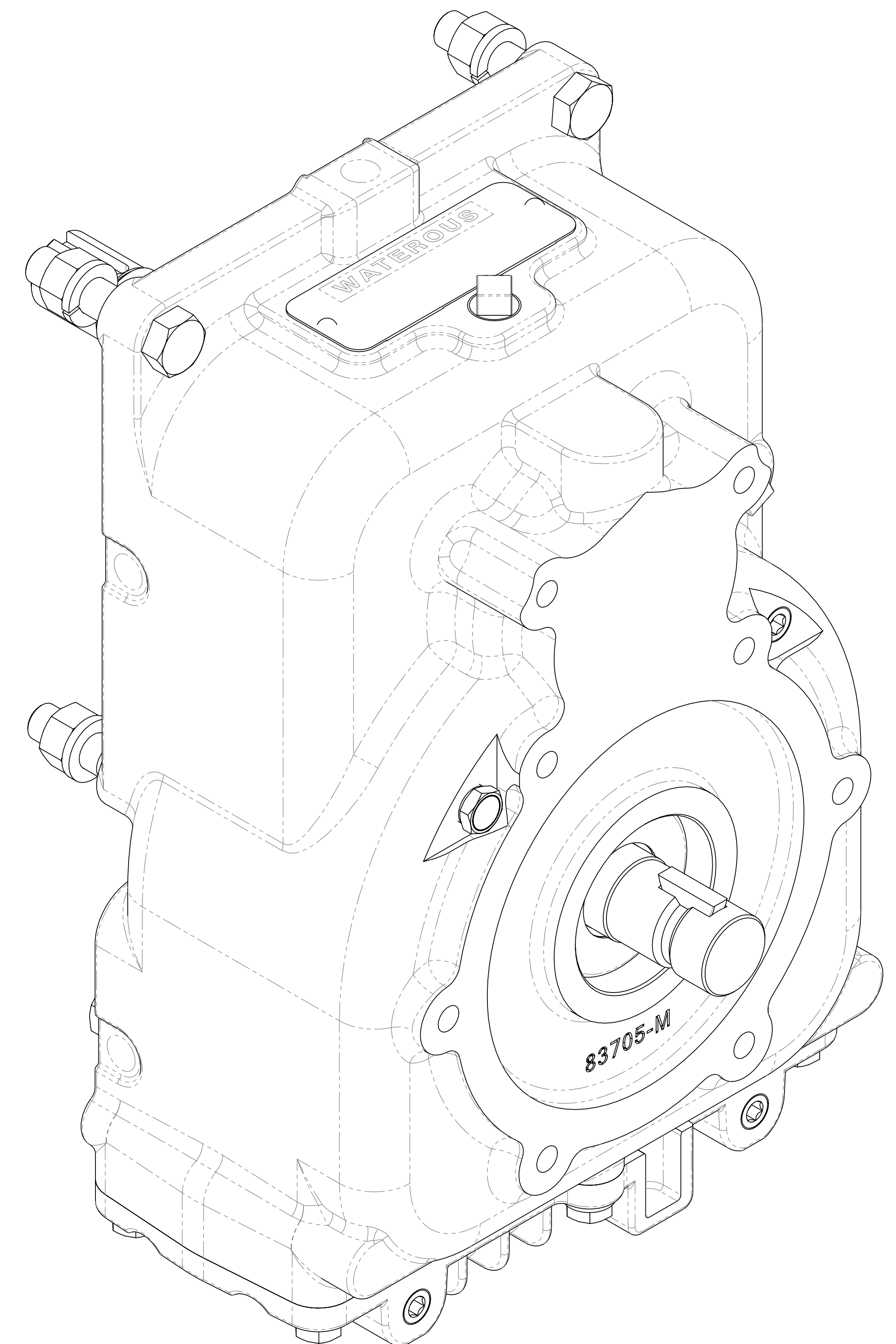
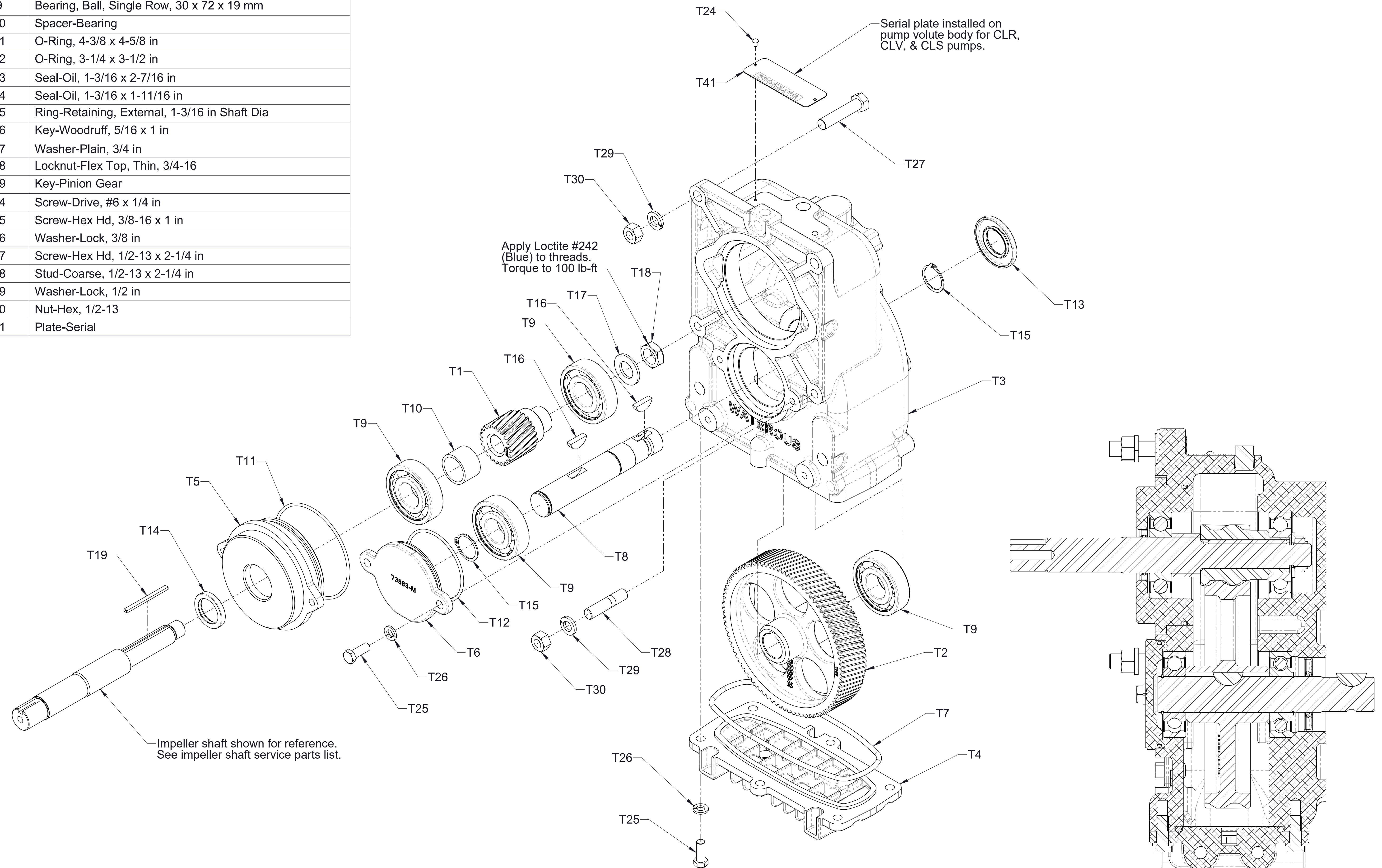


Medium Duty K Transmission Assy 83740

Pump Model	Impeller Shaft type	Extended Shaft for CAFS Drive	Input Type	See Sheet
CP-2, CP-4, CLR, CLV, CLS	One-Piece	No	Standard 1-1/8in. Keyed	2
			Hydraulic Flange Adapter	3
		Yes	Standard 1-1/8in. Keyed	4
CP-2 Combination Pump	One-Piece	N/A	SAE Class C Spline and Adapter 72216	5
CP-3	Separable	N/A	Standard 1-1/8in. Keyed	6
			Hydraulic Flange Adapter	7
Oil Cooler Fittings - CP-4				8
Pump Mounting Positions - Oil Level, Breather, Drain, and Vent locations				9-10

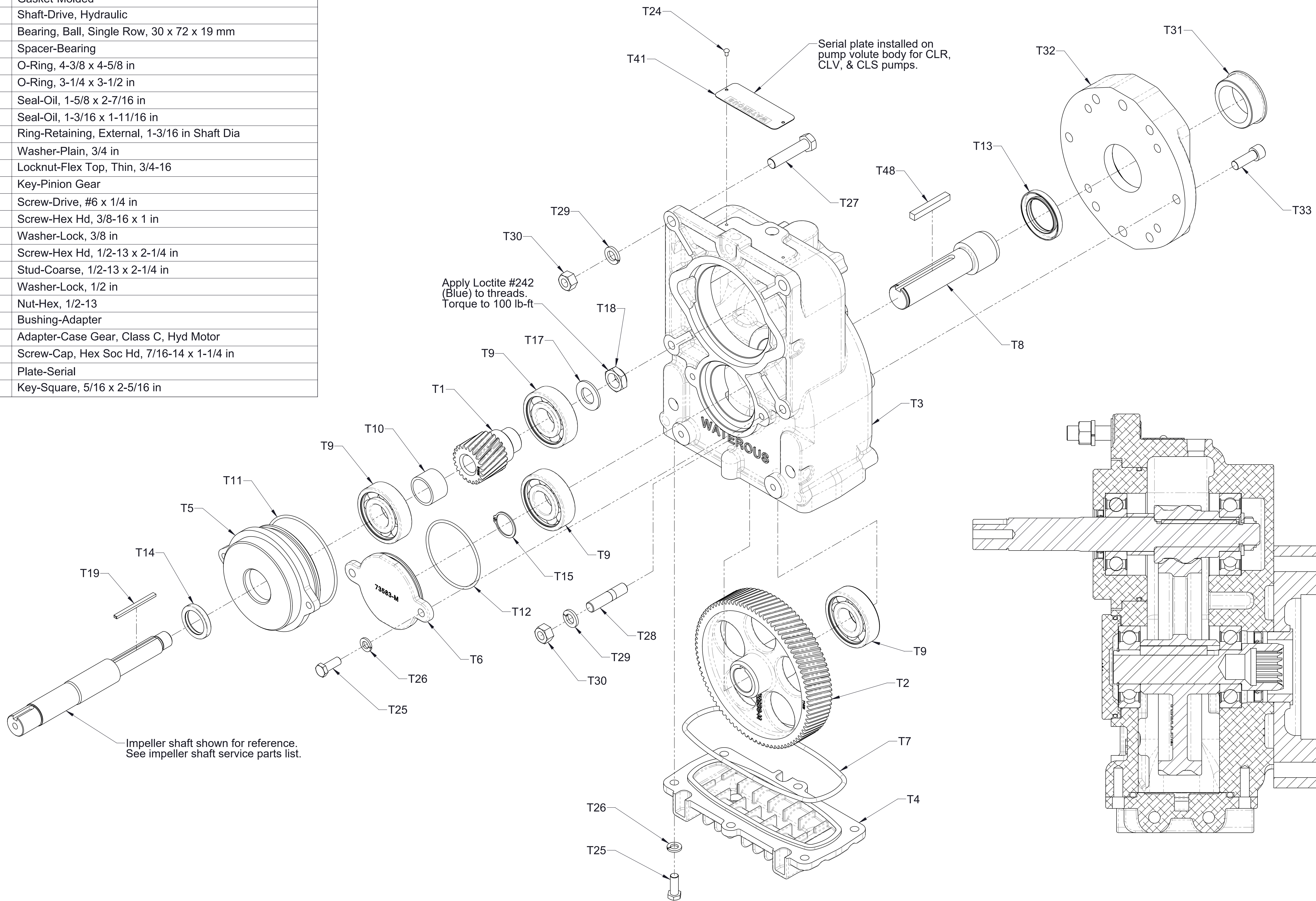


Ref No.	Description
T1	Gear-Driven
T2	Gear-Drive
T3	Case-Transmission
T4	Pan-Oil, Cooler
T5	Housing-Bearing
T6	Cover-Bearing
T7	Gasket-Molded
T8	Shaft-Drive
T9	Bearing, Ball, Single Row, 30 x 72 x 19 mm
T10	Spacer-Bearing
T11	O-Ring, 4-3/8 x 4-5/8 in
T12	O-Ring, 3-1/4 x 3-1/2 in
T13	Seal-Oil, 1-3/16 x 2-7/16 in
T14	Seal-Oil, 1-3/16 x 1-11/16 in
T15	Ring-Retaining, External, 1-3/16 in Shaft Dia
T16	Key-Woodruff, 5/16 x 1 in
T17	Washer-Plain, 3/4 in
T18	Locknut-Flex Top, Thin, 3/4-16
T19	Key-Pinion Gear
T24	Screw-Drive, #6 x 1/4 in
T25	Screw-Hex Hd, 3/8-16 x 1 in
T26	Washer-Lock, 3/8 in
T27	Screw-Hex Hd, 1/2-13 x 2-1/4 in
T28	Stud-Coarse, 1/2-13 x 2-1/4 in
T29	Washer-Lock, 1/2 in
T30	Nut-Hex, 1/2-13
T41	Plate-Serial



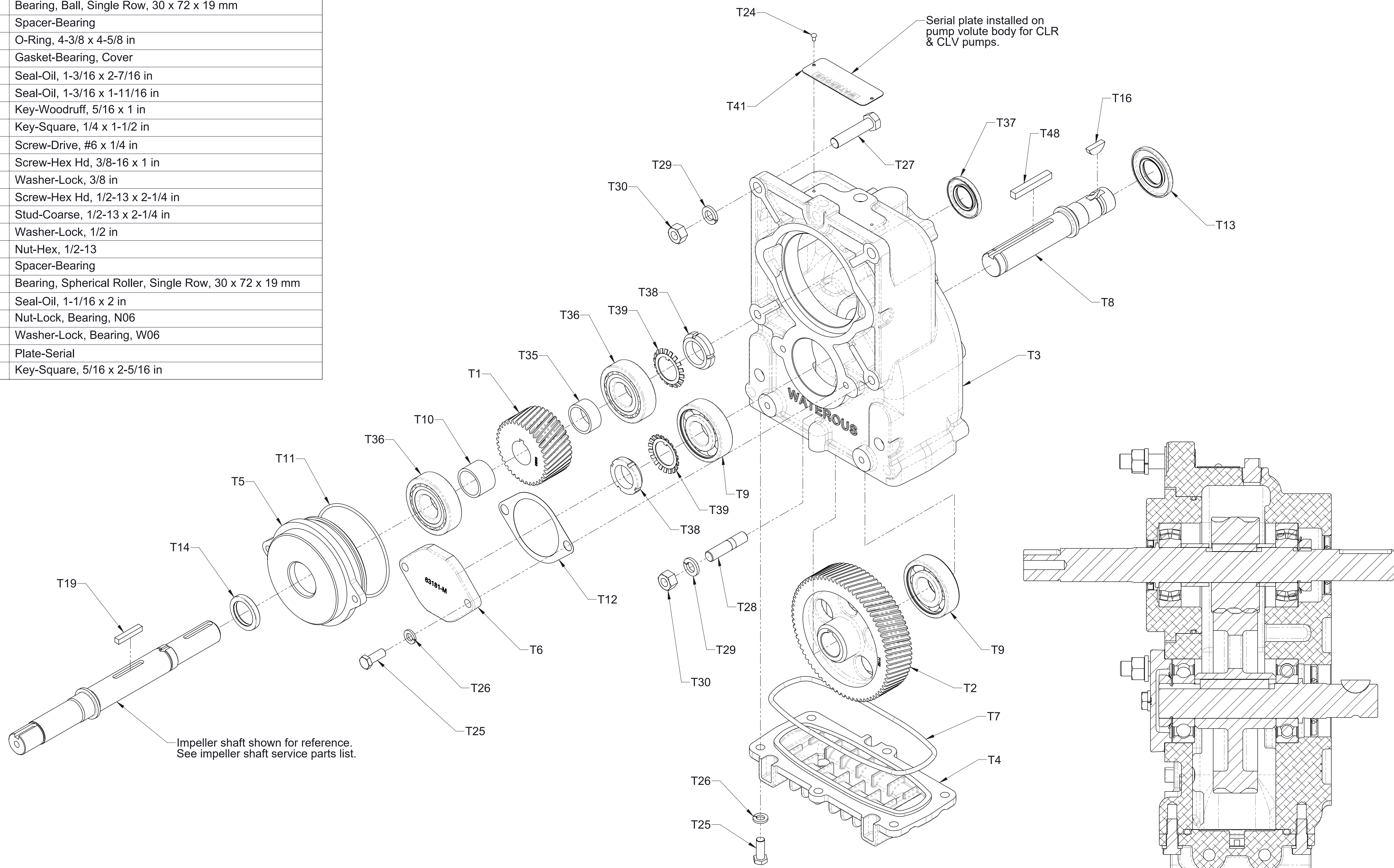
**Transmission Assembly
One Piece Impeller Shaft, 1-1/8in. Keyed Input
Without Extended Shaft
CP-2, CP-4, CLR, CLV, CLS**

Ref No.	Description
T1	Gear-Driven
T2	Gear-Drive
T3	Case-Transmission
T4	Pan-Oil, Cooler
T5	Housing-Bearing
T6	Cover-Bearing
T7	Gasket-Molded
T8	Shaft-Drive, Hydraulic
T9	Bearing, Ball, Single Row, 30 x 72 x 19 mm
T10	Spacer-Bearing
T11	O-Ring, 4-3/8 x 4-5/8 in
T12	O-Ring, 3-1/4 x 3-1/2 in
T13	Seal-Oil, 1-5/8 x 2-7/16 in
T14	Seal-Oil, 1-3/16 x 1-11/16 in
T15	Ring-Retaining, External, 1-3/16 in Shaft Dia
T17	Washer-Plain, 3/4 in
T18	Locknut-Flex Top, Thin, 3/4-16
T19	Key-Pinion Gear
T24	Screw-Drive, #6 x 1/4 in
T25	Screw-Hex Hd, 3/8-16 x 1 in
T26	Washer-Lock, 3/8 in
T27	Screw-Hex Hd, 1/2-13 x 2-1/4 in
T28	Stud-Coarse, 1/2-13 x 2-1/4 in
T29	Washer-Lock, 1/2 in
T30	Nut-Hex, 1/2-13
T31	Bushing-Adapter
T32	Adapter-Case Gear, Class C, Hyd Motor
T33	Screw-Cap, Hex Soc Hd, 7/16-14 x 1-1/4 in
T41	Plate-Serial
T48	Key-Square, 5/16 x 2-5/16 in



**Transmission Assembly
One Piece Impeller Shaft, SAE Class C Hydraulic Adapter
Without Extended Shaft
CP-2, CP-4, CLR, CLV, CLS**

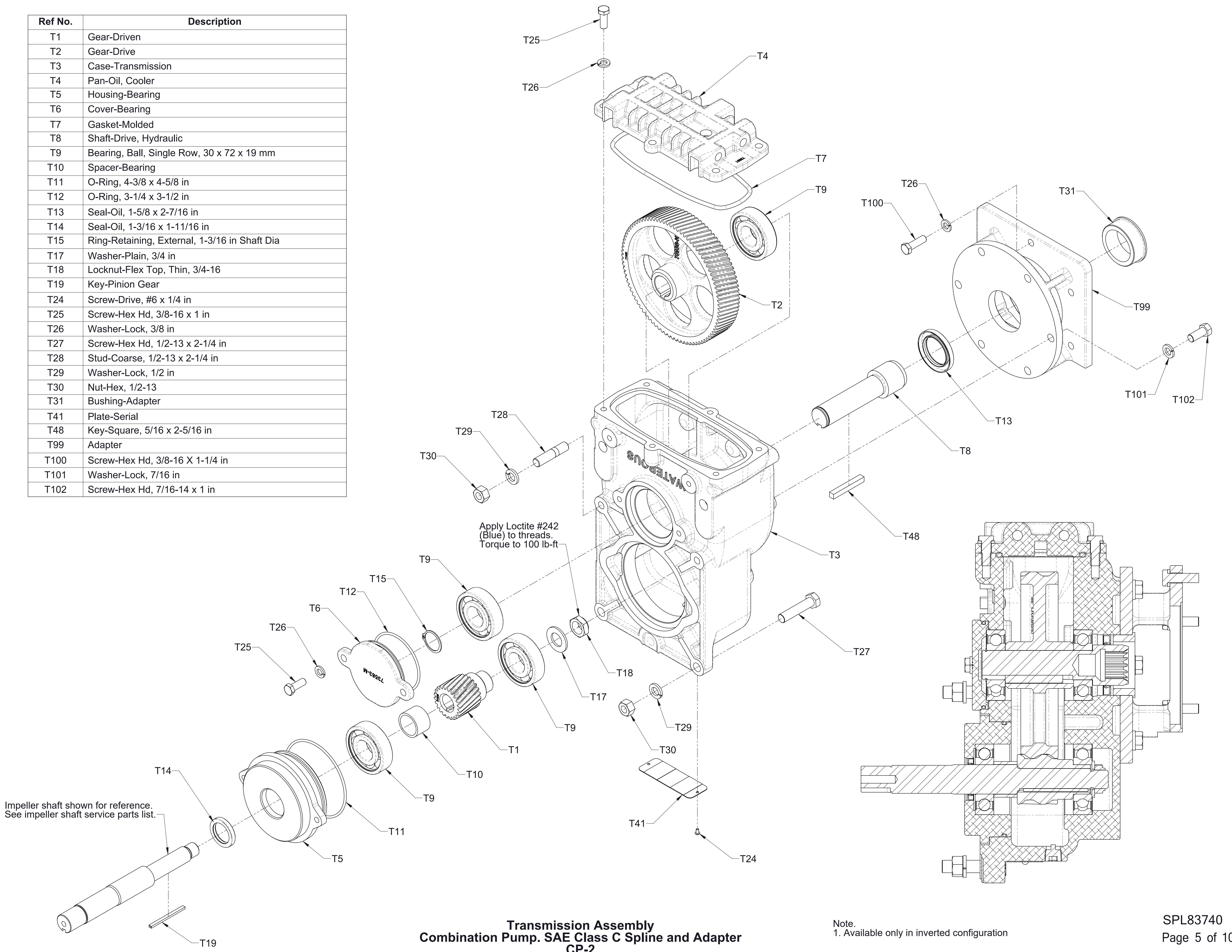
Ref No.	Description
T1	Gear-Driven
T2	Gear-Drive
T3	Case-Transmission
T4	Pan-Oil, Cooler
T5	Housing-Bearing
T6	Cover-Bearing
T7	Gasket-Molded
T8	Shaft-Drive
T9	Bearing, Ball, Single Row, 30 x 72 x 19 mm
T10	Spacer-Bearing
T11	O-Ring, 4-3/8 x 4-5/8 in
T12	Gasket-Bearing, Cover
T13	Seal-Oil, 1-3/16 x 2-7/16 in
T14	Seal-Oil, 1-3/16 x 1-11/16 in
T16	Key-Woodruff, 5/16 x 1 in
T19	Key-Square, 1/4 x 1-1/2 in
T24	Screw-Drive, #6 x 1/4 in
T25	Screw-Hex Hd, 3/8-16 x 1 in
T26	Washer-Lock, 3/8 in
T27	Screw-Hex Hd, 1/2-13 x 2-1/4 in
T28	Stud-Coarse, 1/2-13 x 2-1/4 in
T29	Washer-Lock, 1/2 in
T30	Nut-Hex, 1/2-13
T35	Spacer-Bearing
T36	Bearing, Spherical Roller, Single Row, 30 x 72 x 19 mm
T37	Seal-Oil, 1-1/16 x 2 in
T38	Nut-Lock, Bearing, N06
T39	Washer-Lock, Bearing, W06
T41	Plate-Serial
T48	Key-Square, 5/16 x 2-5/16 in



**Transmission Assembly
One Piece Impeller Shaft, 1-1/8in. Keyed Input
With Extended Shaft for CAFS Drive
CP-2, CLR, CLV**

Note:
1. Belt and pulley may not have been furnished by Waterous

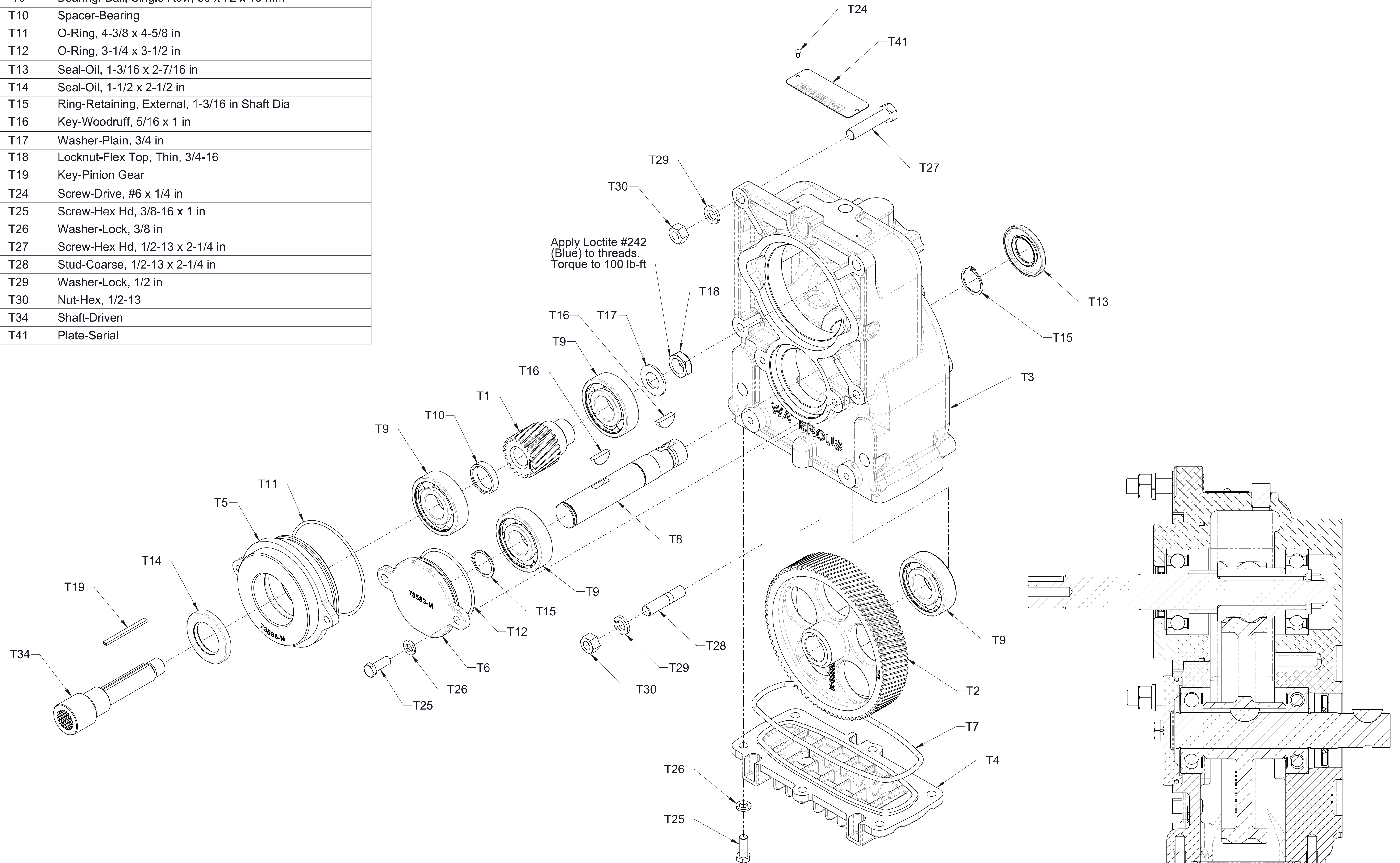
Ref No.	Description
T1	Gear-Driven
T2	Gear-Drive
T3	Case-Transmission
T4	Pan-Oil, Cooler
T5	Housing-Bearing
T6	Cover-Bearing
T7	Gasket-Molded
T8	Shaft-Drive, Hydraulic
T9	Bearing, Ball, Single Row, 30 x 72 x 19 mm
T10	Spacer-Bearing
T11	O-Ring, 4-3/8 x 4-5/8 in
T12	O-Ring, 3-1/4 x 3-1/2 in
T13	Seal-Oil, 1-5/8 x 2-7/16 in
T14	Seal-Oil, 1-3/16 x 1-11/16 in
T15	Ring-Retaining, External, 1-3/16 in Shaft Dia
T17	Washer-Plain, 3/4 in
T18	Locknut-Flex Top, Thin, 3/4-16
T19	Key-Pinion Gear
T24	Screw-Drive, #6 x 1/4 in
T25	Screw-Hex Hd, 3/8-16 x 1 in
T26	Washer-Lock, 3/8 in
T27	Screw-Hex Hd, 1/2-13 x 2-1/4 in
T28	Stud-Coarse, 1/2-13 x 2-1/4 in
T29	Washer-Lock, 1/2 in
T30	Nut-Hex, 1/2-13
T31	Bushing-Adapter
T41	Plate-Serial
T48	Key-Square, 5/16 x 2-5/16 in
T99	Adapter
T100	Screw-Hex Hd, 3/8-16 X 1-1/4 in
T101	Washer-Lock, 7/16 in
T102	Screw-Hex Hd, 7/16-14 x 1 in



**Transmission Assembly
Combination Pump. SAE Class C Spline and Adapter
CP-2**

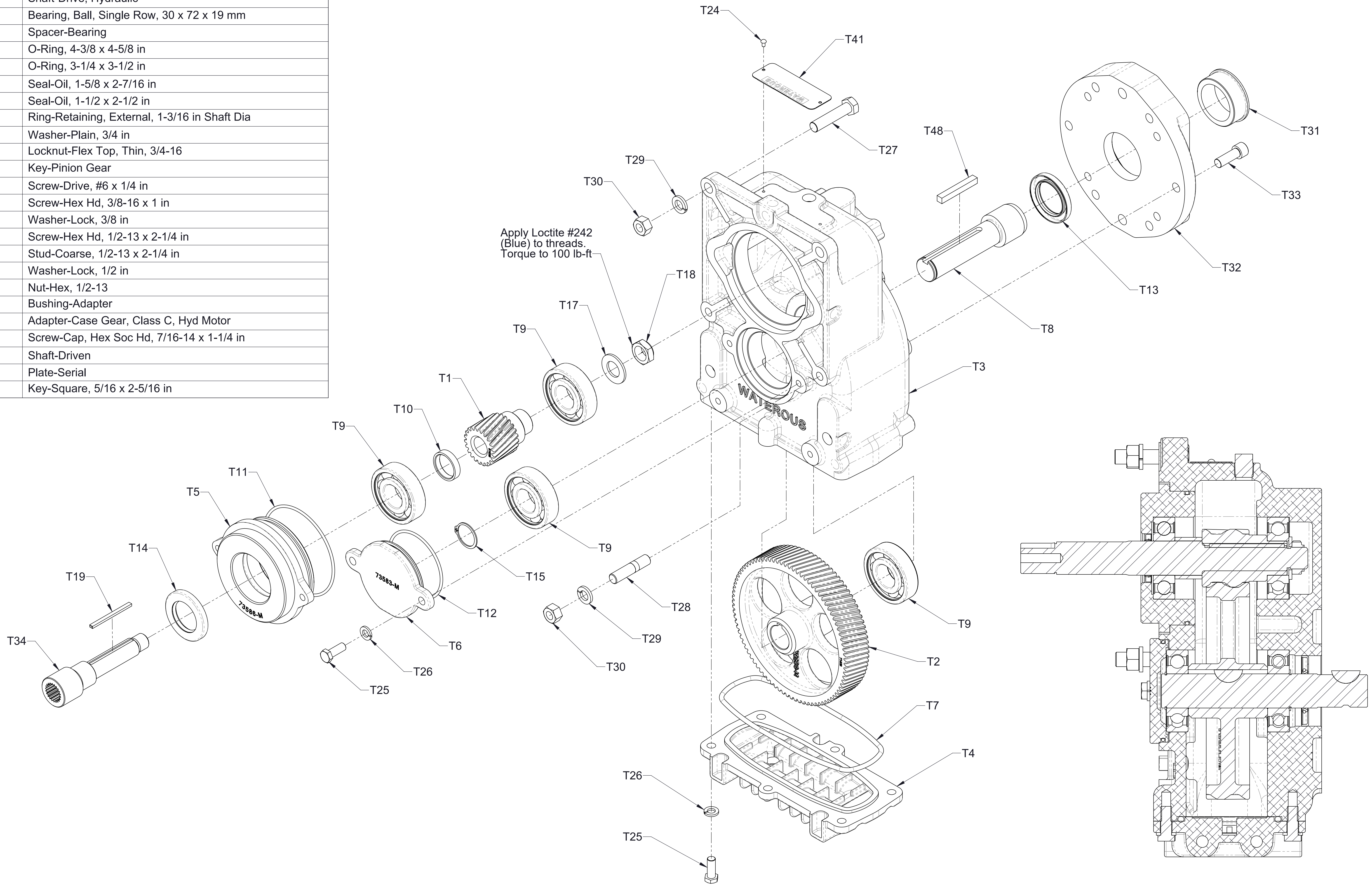
Note.
1. Available only in inverted configuration

Ref No.	Description
T1	Gear-Driven
T2	Gear-Drive
T3	Case-Transmission
T4	Pan-Oil, Cooler
T5	Housing-Bearing
T6	Cover-Bearing
T7	Gasket-Molded
T8	Shaft-Drive
T9	Bearing, Ball, Single Row, 30 x 72 x 19 mm
T10	Spacer-Bearing
T11	O-Ring, 4-3/8 x 4-5/8 in
T12	O-Ring, 3-1/4 x 3-1/2 in
T13	Seal-Oil, 1-3/16 x 2-7/16 in
T14	Seal-Oil, 1-1/2 x 2-1/2 in
T15	Ring-Retaining, External, 1-3/16 in Shaft Dia
T16	Key-Woodruff, 5/16 x 1 in
T17	Washer-Plain, 3/4 in
T18	Locknut-Flex Top, Thin, 3/4-16
T19	Key-Pinion Gear
T24	Screw-Drive, #6 x 1/4 in
T25	Screw-Hex Hd, 3/8-16 x 1 in
T26	Washer-Lock, 3/8 in
T27	Screw-Hex Hd, 1/2-13 x 2-1/4 in
T28	Stud-Coarse, 1/2-13 x 2-1/4 in
T29	Washer-Lock, 1/2 in
T30	Nut-Hex, 1/2-13
T34	Shaft-Driven
T41	Plate-Serial



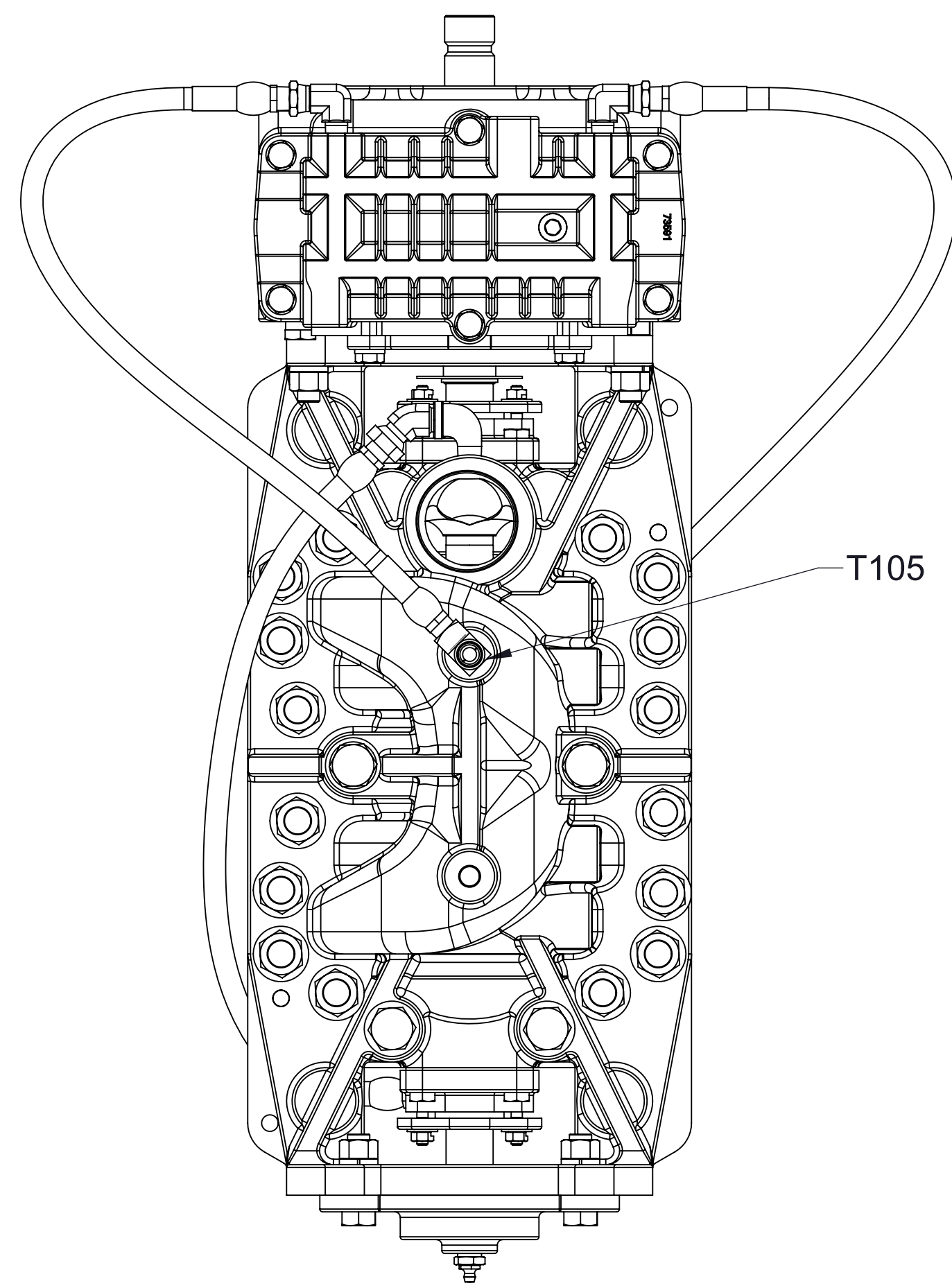
**Transmission Assembly
Separable Impeller Shaft, 1-1/8in. Keyed Input
CP-3**

Ref No.	Description
T1	Gear-Driven
T2	Gear-Drive
T3	Case-Transmission
T4	Pan-Oil, Cooler
T5	Housing-Bearing
T6	Cover-Bearing
T7	Gasket-Molded
T8	Shaft-Drive, Hydraulic
T9	Bearing, Ball, Single Row, 30 x 72 x 19 mm
T10	Spacer-Bearing
T11	O-Ring, 4-3/8 x 4-5/8 in
T12	O-Ring, 3-1/4 x 3-1/2 in
T13	Seal-Oil, 1-5/8 x 2-7/16 in
T14	Seal-Oil, 1-1/2 x 2-1/2 in
T15	Ring-Retaining, External, 1-3/16 in Shaft Dia
T17	Washer-Plain, 3/4 in
T18	Locknut-Flex Top, Thin, 3/4-16
T19	Key-Pinion Gear
T24	Screw-Drive, #6 x 1/4 in
T25	Screw-Hex Hd, 3/8-16 x 1 in
T26	Washer-Lock, 3/8 in
T27	Screw-Hex Hd, 1/2-13 x 2-1/4 in
T28	Stud-Coarse, 1/2-13 x 2-1/4 in
T29	Washer-Lock, 1/2 in
T30	Nut-Hex, 1/2-13
T31	Bushing-Adapter
T32	Adapter-Case Gear, Class C, Hyd Motor
T33	Screw-Cap, Hex Soc Hd, 7/16-14 x 1-1/4 in
T34	Shaft-Driven
T41	Plate-Serial
T48	Key-Square, 5/16 x 2-5/16 in

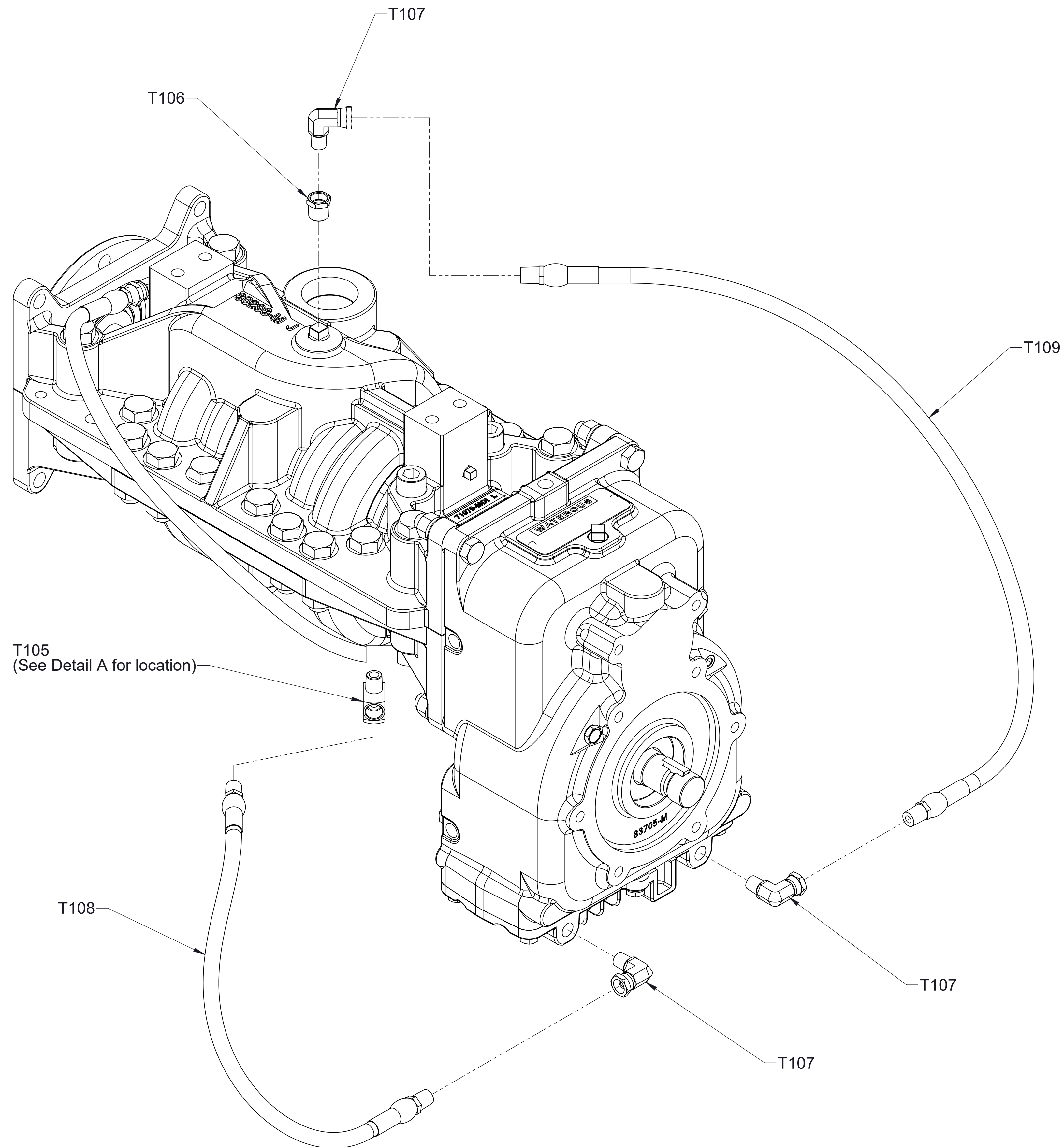


Transmission Assembly
Separable Impeller Shaft, 1-1/8in. SAE Class C Hydraulic Adapter
CP-3

Ref No.	Description
T105	Tee-Street, 1/4 NPT
T106	Bushing-Reducing, Pipe, 3/8 x 1/4 NPT
T107	Elbow-Adapter, Union, 90deg, 1/4 NPT
T108	Hose, High Pressure, 1/4 NPT x 23 in
T109	Hose, High Pressure, 1/4 NPT x 31 in

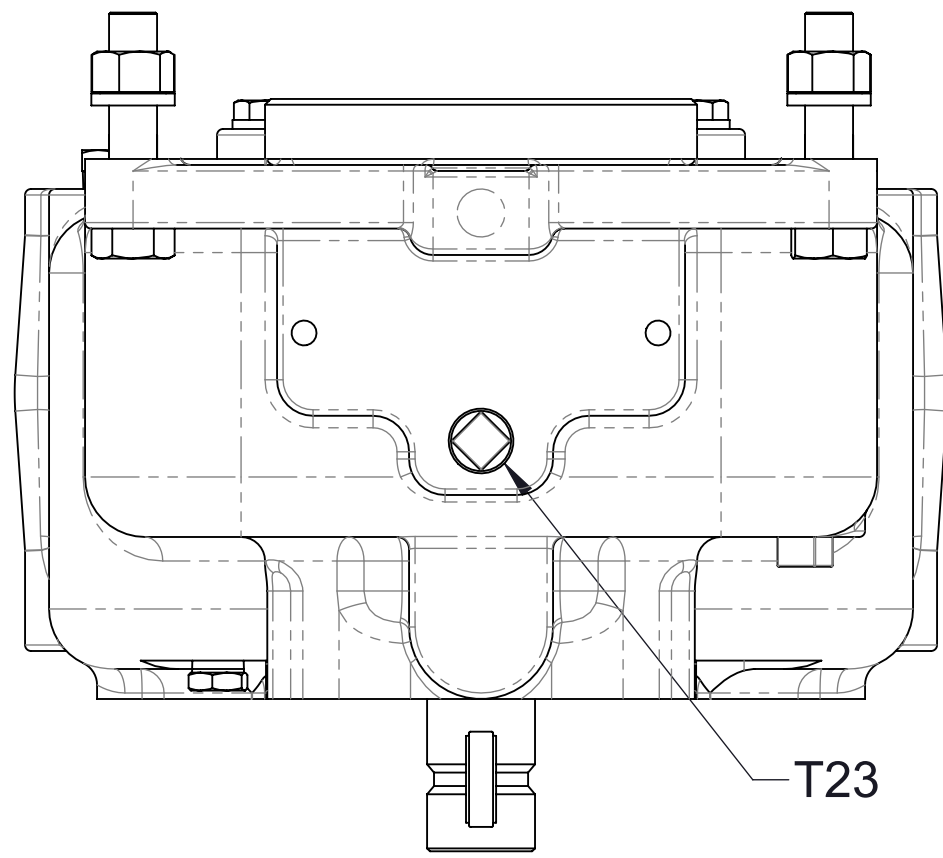


Detail A

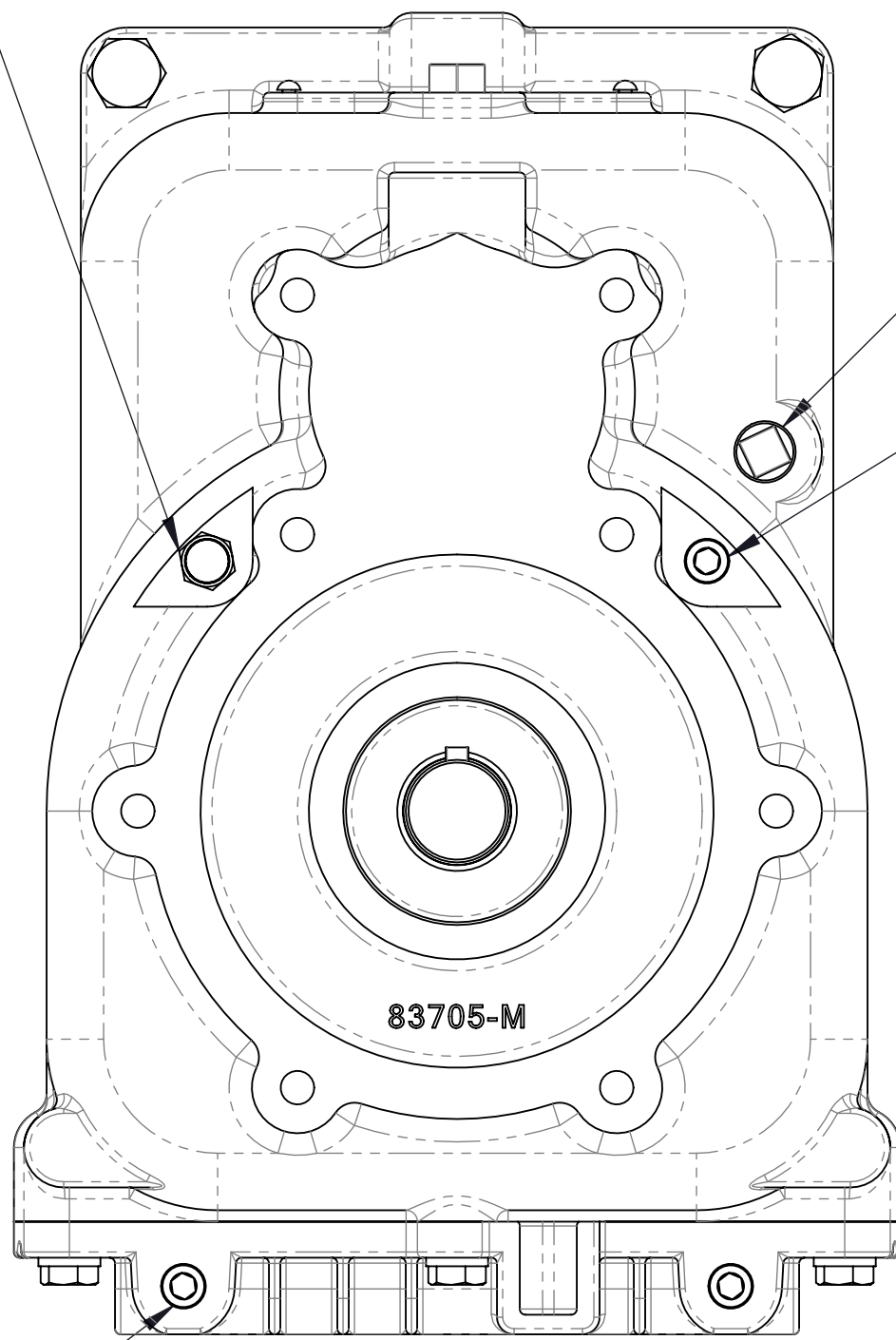


Note:
 1. Route hoses so they drain through the transmission or pump. Draining is not required when pump is mounted with a horizontal or inverted discharge

Ref No.	Description
T20	Breather, 1/4 NPT
T21	Plug-Level, Oil, 3/8
T22	Plug-Drain, Magnetic, 3/8, Headless
T23	Plug-Pipe, Square Hd, 3/8 NPT
T40	Plug-Pipe, Headless, 1/4 NPT
T42	Plug-Pipe, Headless, 1/4 NPT



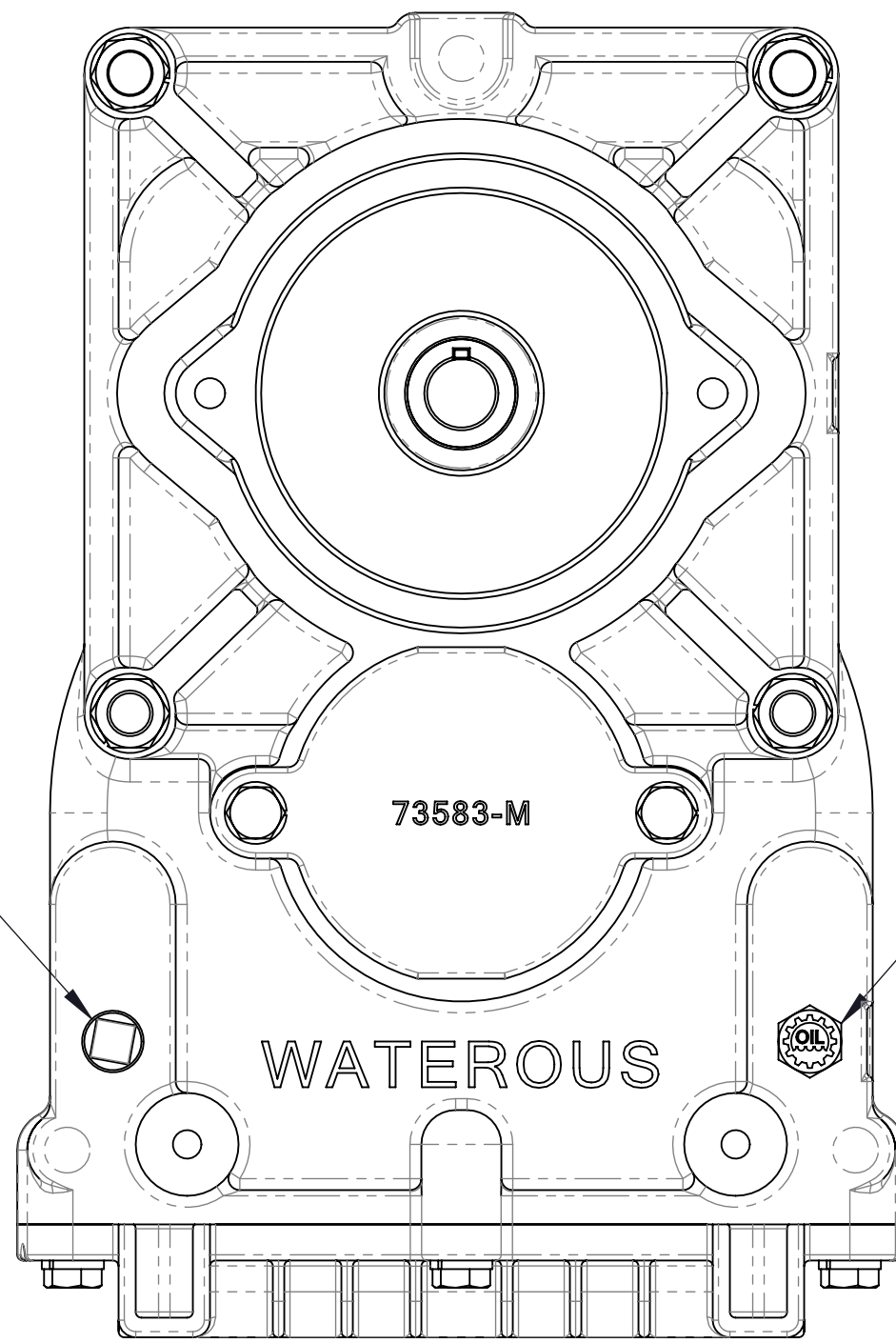
T20 (CCW Input Rotation)
T40 (CW Input Rotation)



T23

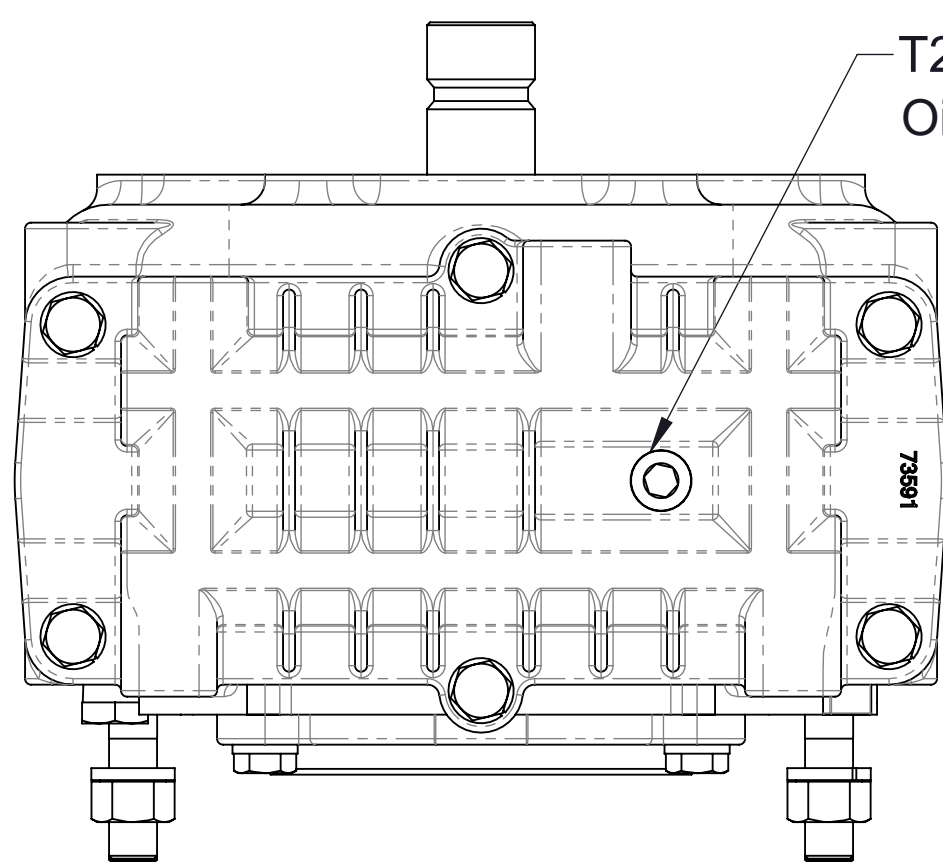
T20 (CW Input Rotation)
T40 (CCW Input Rotation)

T23



T21
Oil Level

T42



T22
Oil Drain

Note transmission
pan orientation

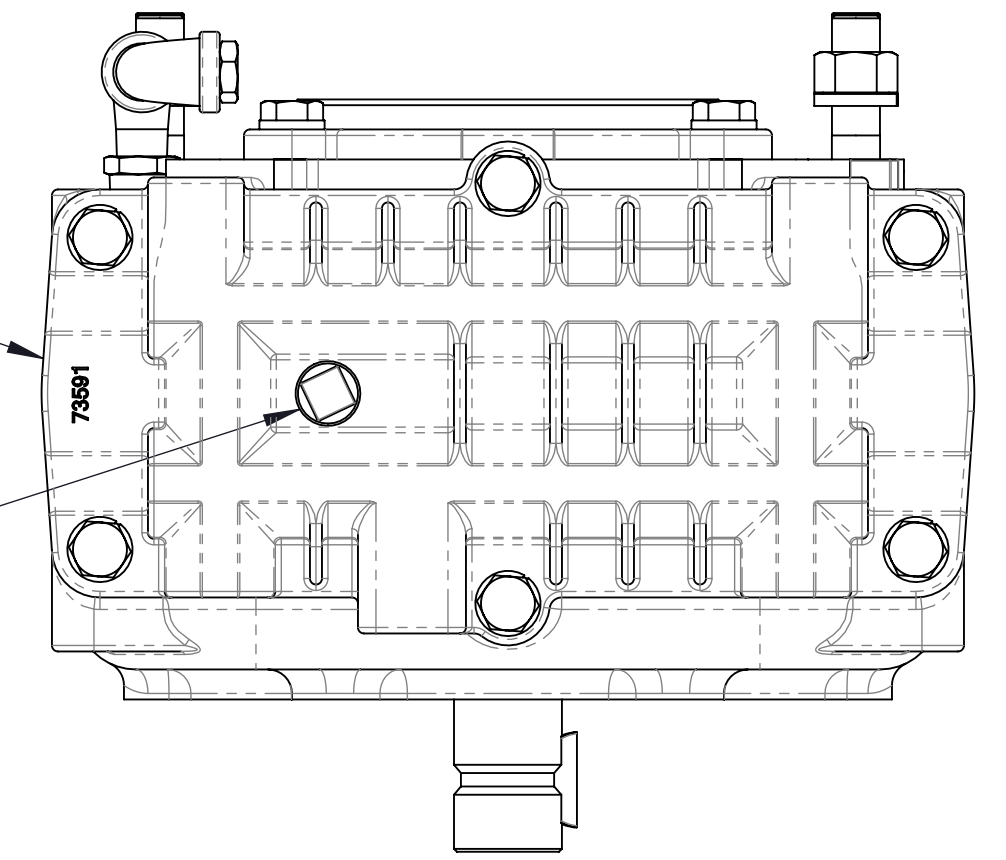
Vertical

Ref No.	Description
T20	Breather, 1/4 NPT
T21	Plug-Level, Oil, 3/8
T22	Plug-Drain, Magnetic, 3/8, Headless
T23	Plug-Pipe, Square Hd, 3/8 NPT
T40	Plug-Pipe, Headless, 1/4 NPT
T42	Plug-Pipe, Headless, 1/4 NPT
T103	Bushing-Reducing, 3/8 MNPT x 1/4 FNPT
T104	Elbow-Street, 90°, 1/4 NPT

Note: Added second elbow after February 15th, 2021

Note transmission
pan orientation

T23



T20

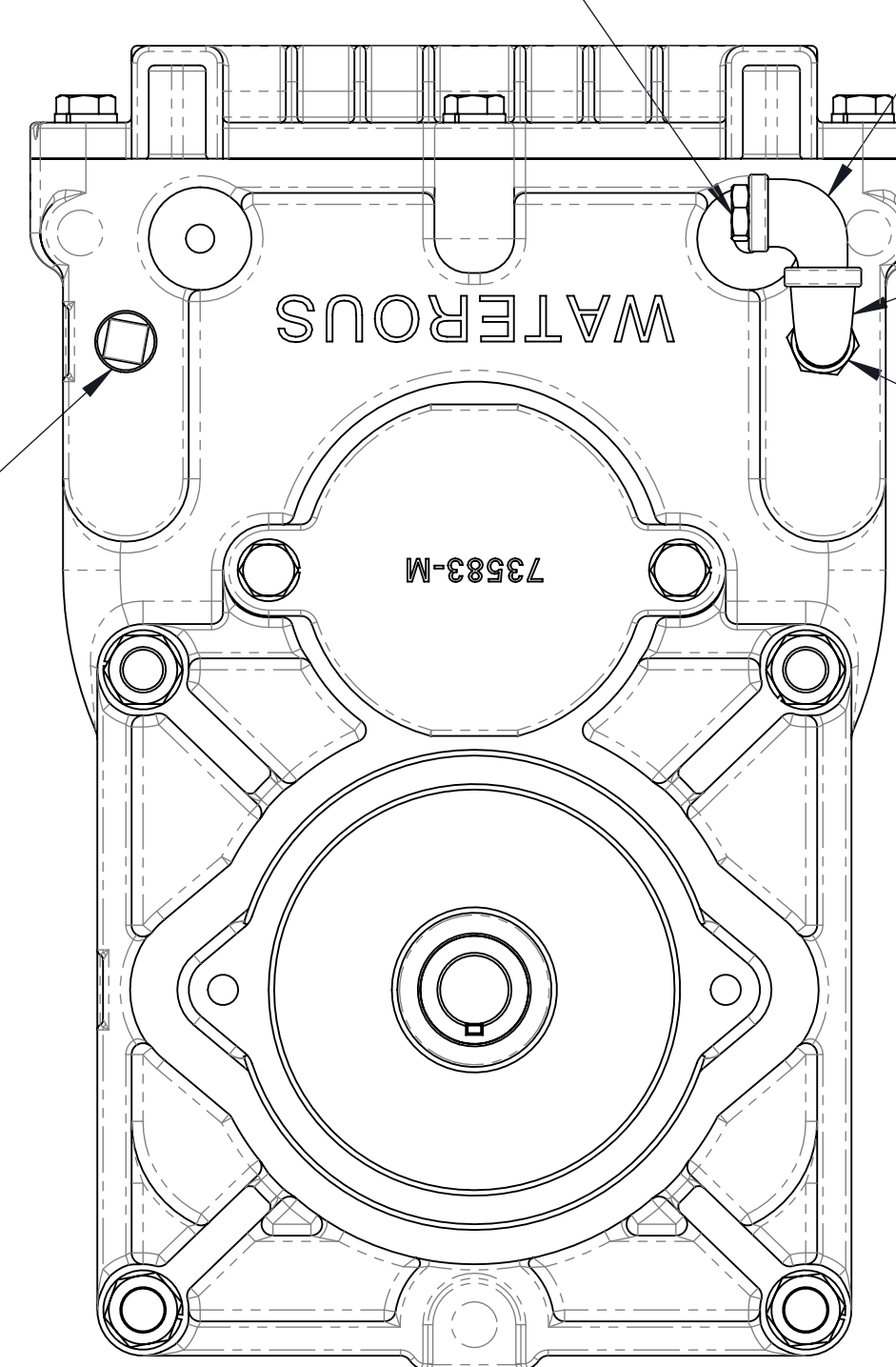
T104
See note

T42

T23

T104

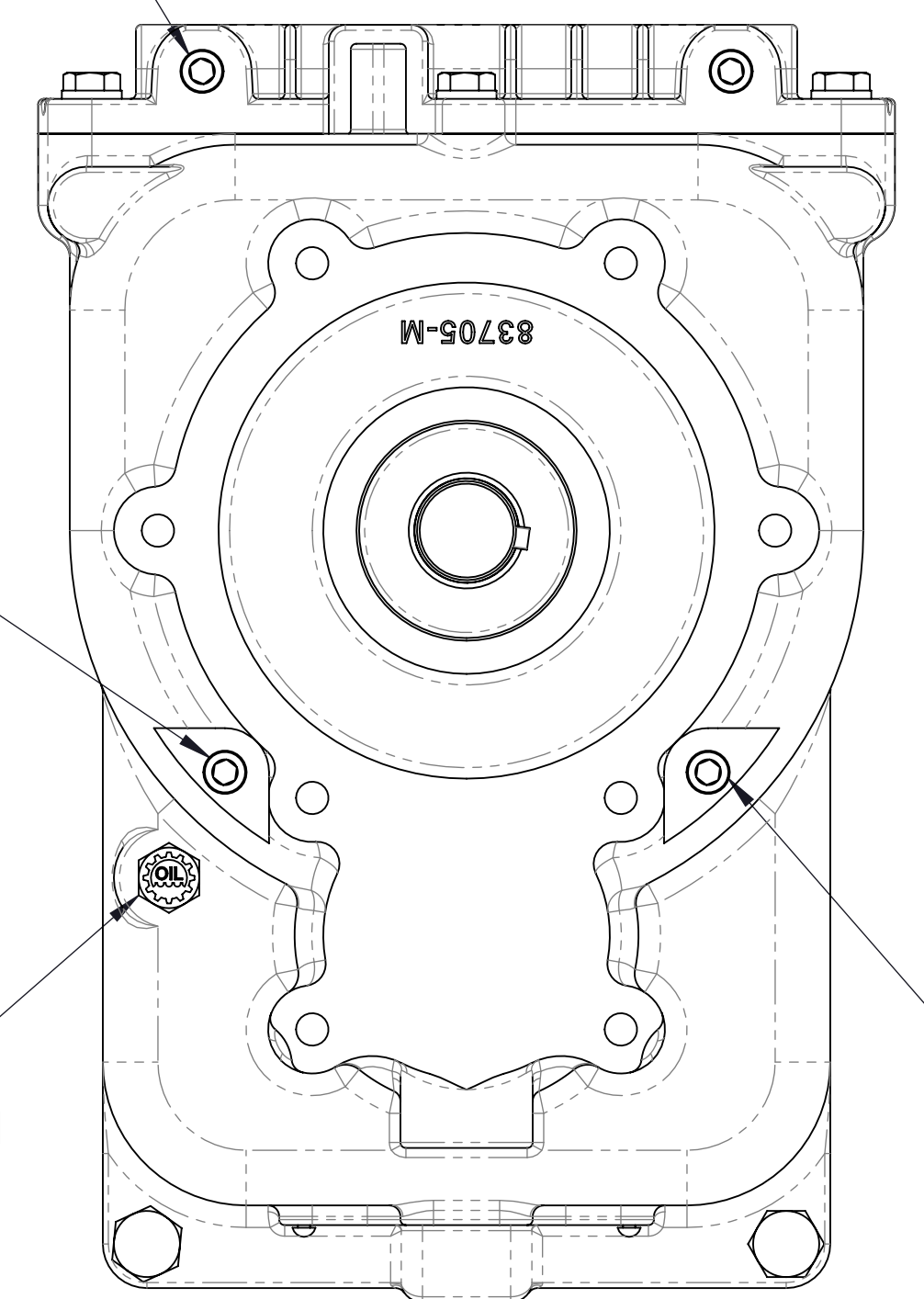
T103



T40

T21
Oil Level

T40

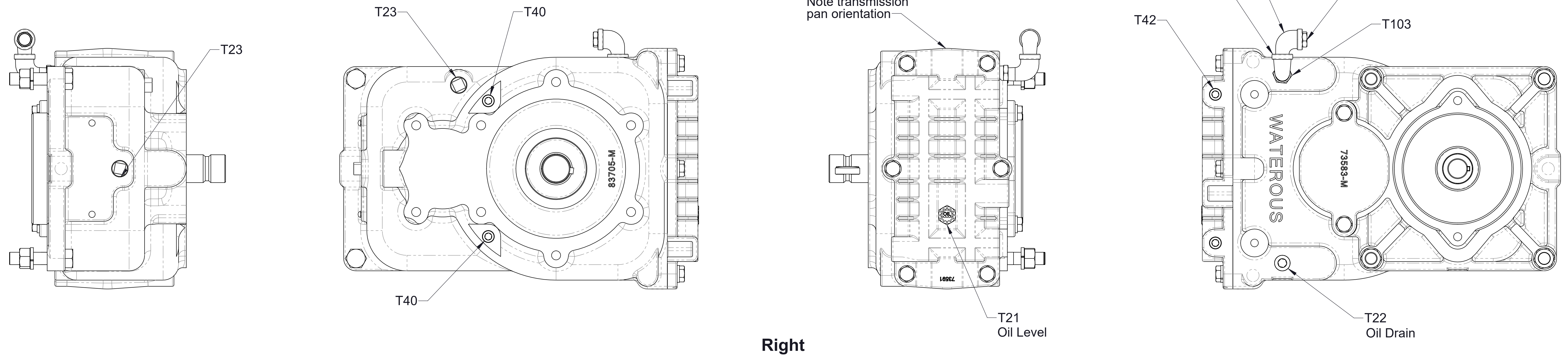


T22
Oil Drain

Inverted

Ref No.	Description
T20	Breather, 1/4 NPT
T21	Plug-Level, Oil, 3/8
T22	Plug-Drain, Magnetic, 3/8, Headless
T23	Plug-Pipe, Square Hd, 3/8 NPT
T40	Plug-Pipe, Headless, 1/4 NPT
T42	Plug-Pipe, Headless, 1/4 NPT
T103	Bushing-Reducing, 3/8 MNPT x 1/4 FNPT
T104	Elbow-Street, 90°, 1/4 NPT

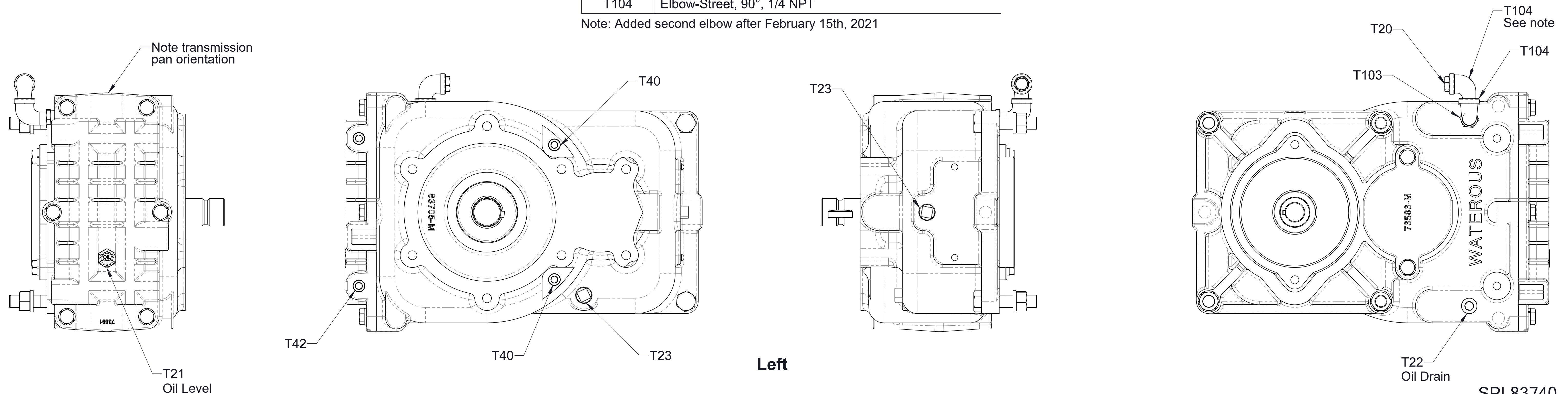
Note: Added second elbow after February 15th, 2021



Right

Ref No.	Description
T20	Breather, 1/4 NPT
T21	Plug-Level, Oil, 3/8
T22	Plug-Drain, Magnetic, 3/8, Headless
T23	Plug-Pipe, Square Hd, 3/8 NPT
T40	Plug-Pipe, Headless, 1/4 NPT
T42	Plug-Pipe, Headless, 1/4 NPT
T103	Bushing-Reducing, 3/8 MNPT x 1/4 FNPT
T104	Elbow-Street, 90°, 1/4 NPT

Note: Added second elbow after February 15th, 2021



Left

Breather, Drain, Oil Level, and Plug Locations
Left and Right Mounting Positions