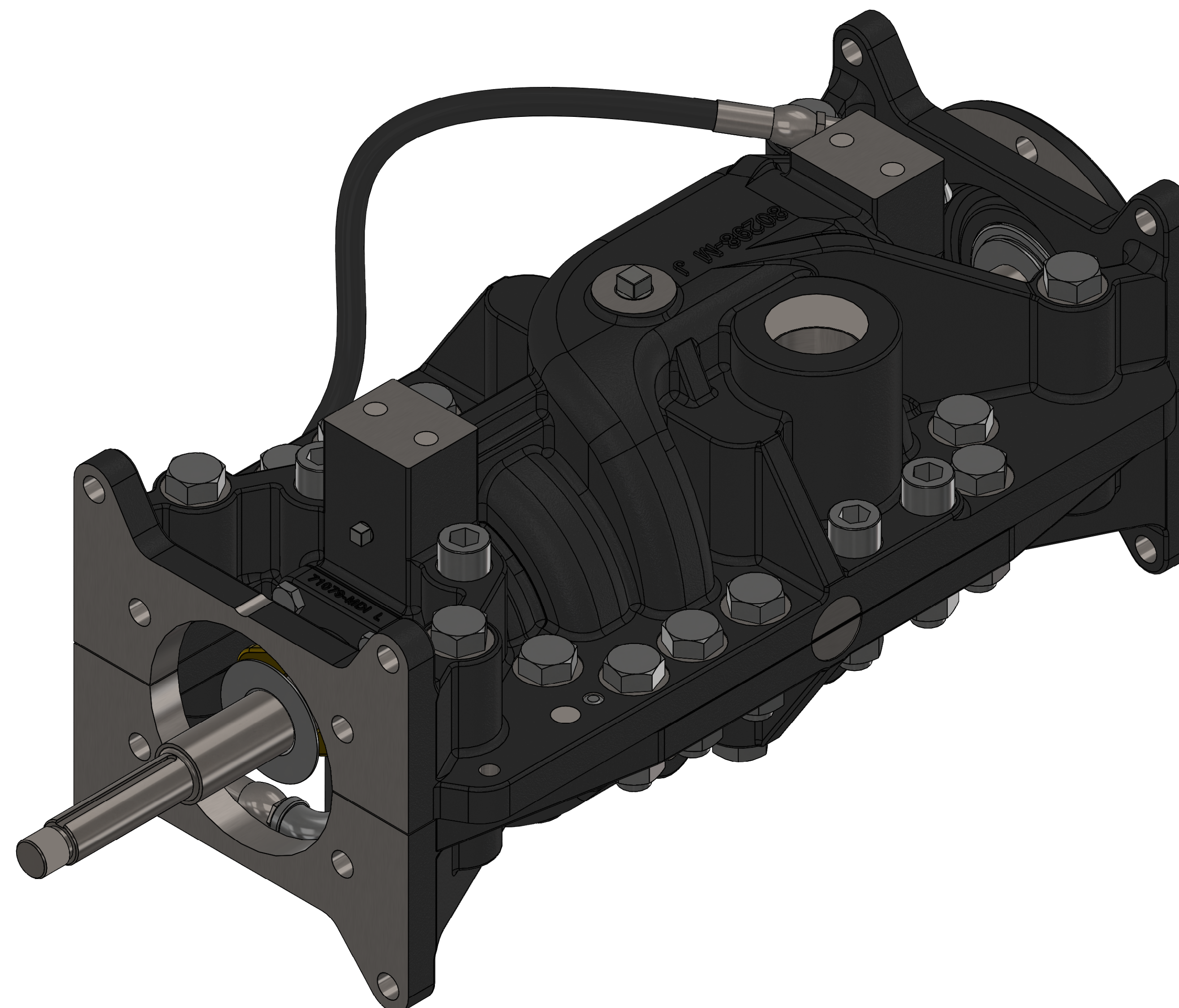
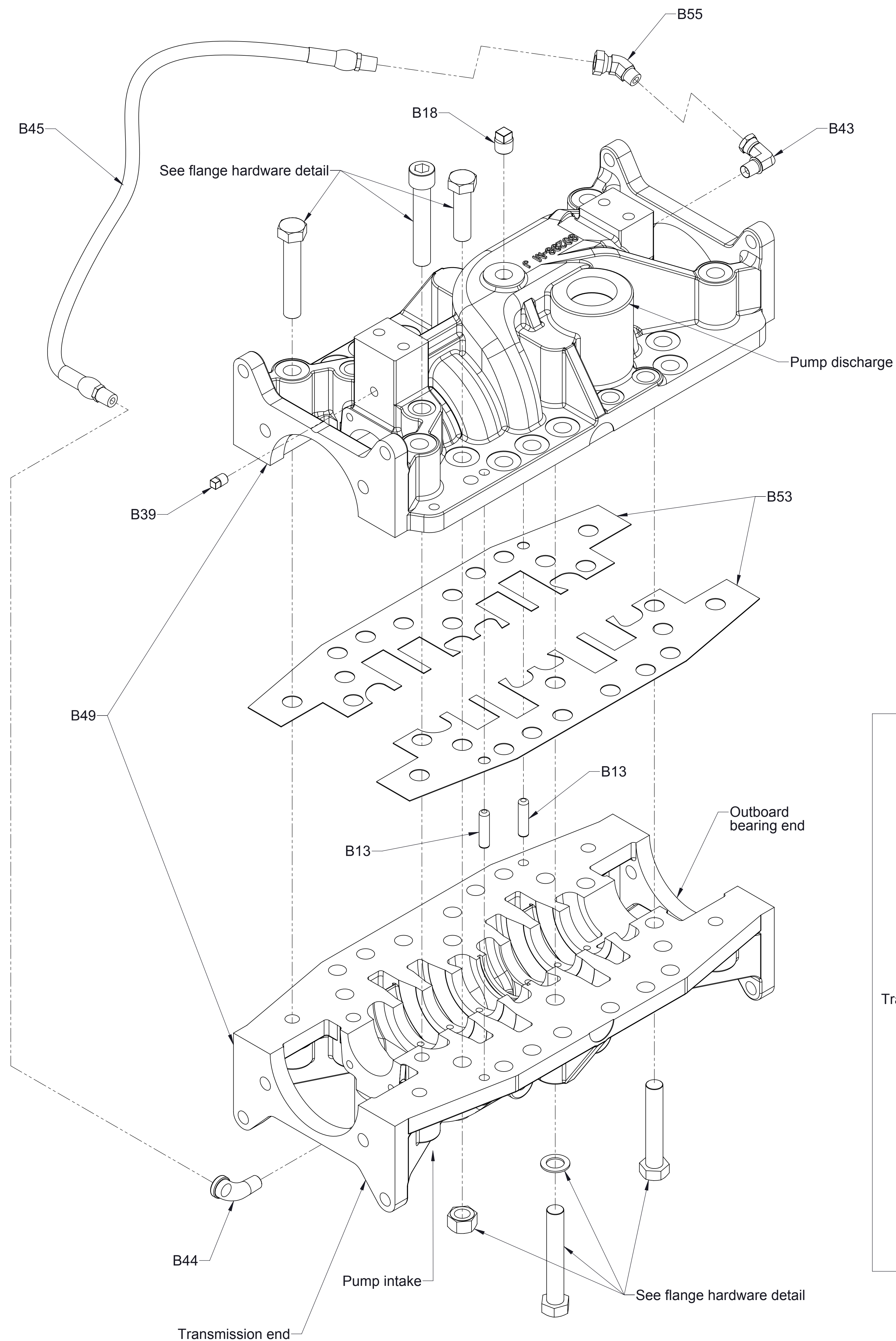


CP-4 Body and Impeller Shaft Service Parts List

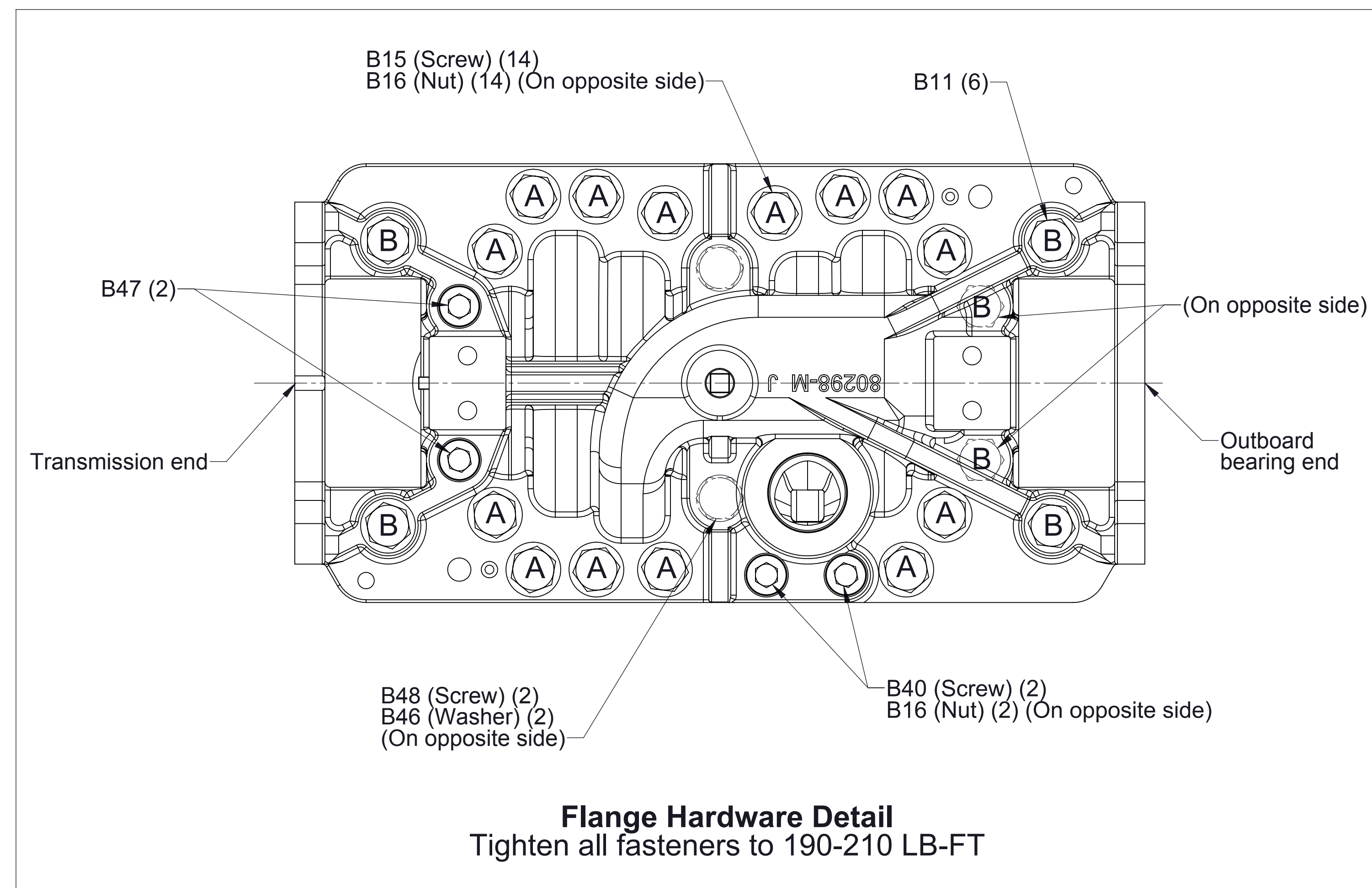
Pump Model	Input Rotation (See Note)	See Page		
		Body and Impeller Shaft		
		Body Components	Impeller Shaft Components	Cross-Section View
CPK-4, CPT-4, CPT-4UH	CW	2	3	4

Note: Two gear transmissions are used with CP-4 pumps causing the pump impeller shaft to rotate opposite the transmission input rotation.



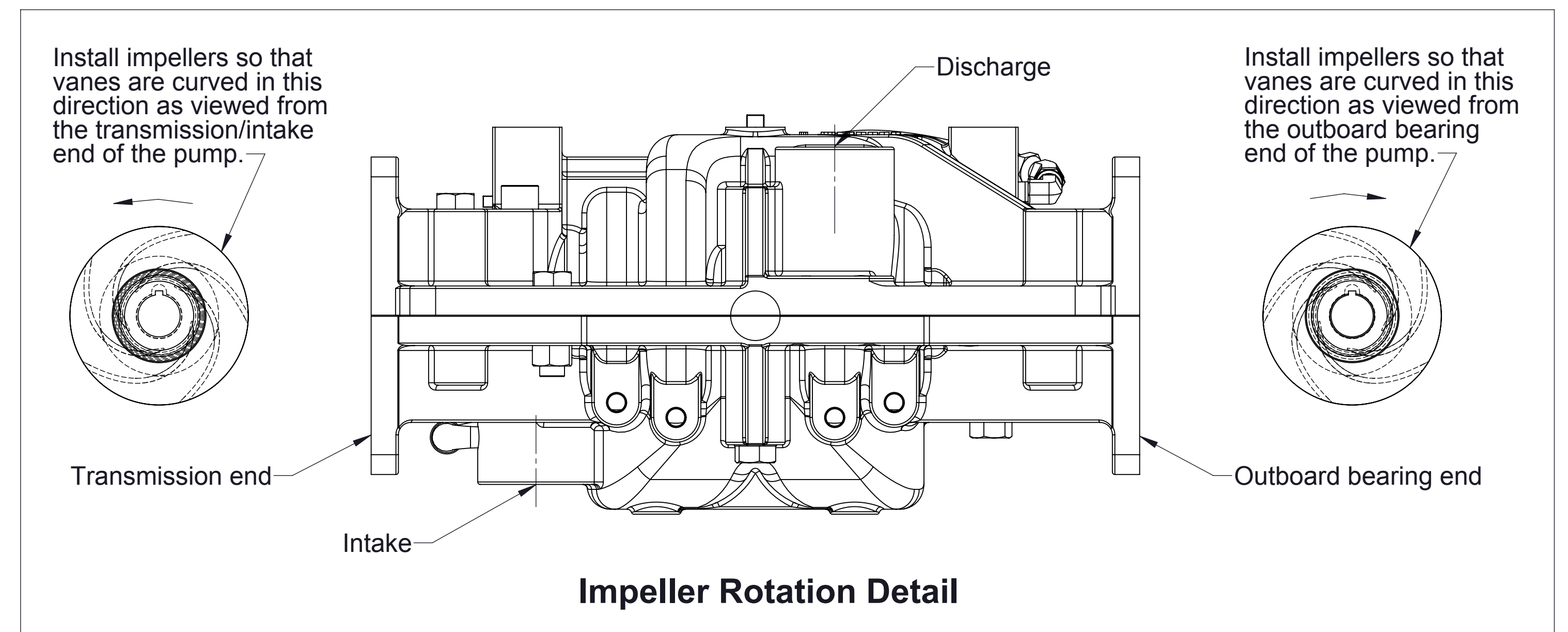
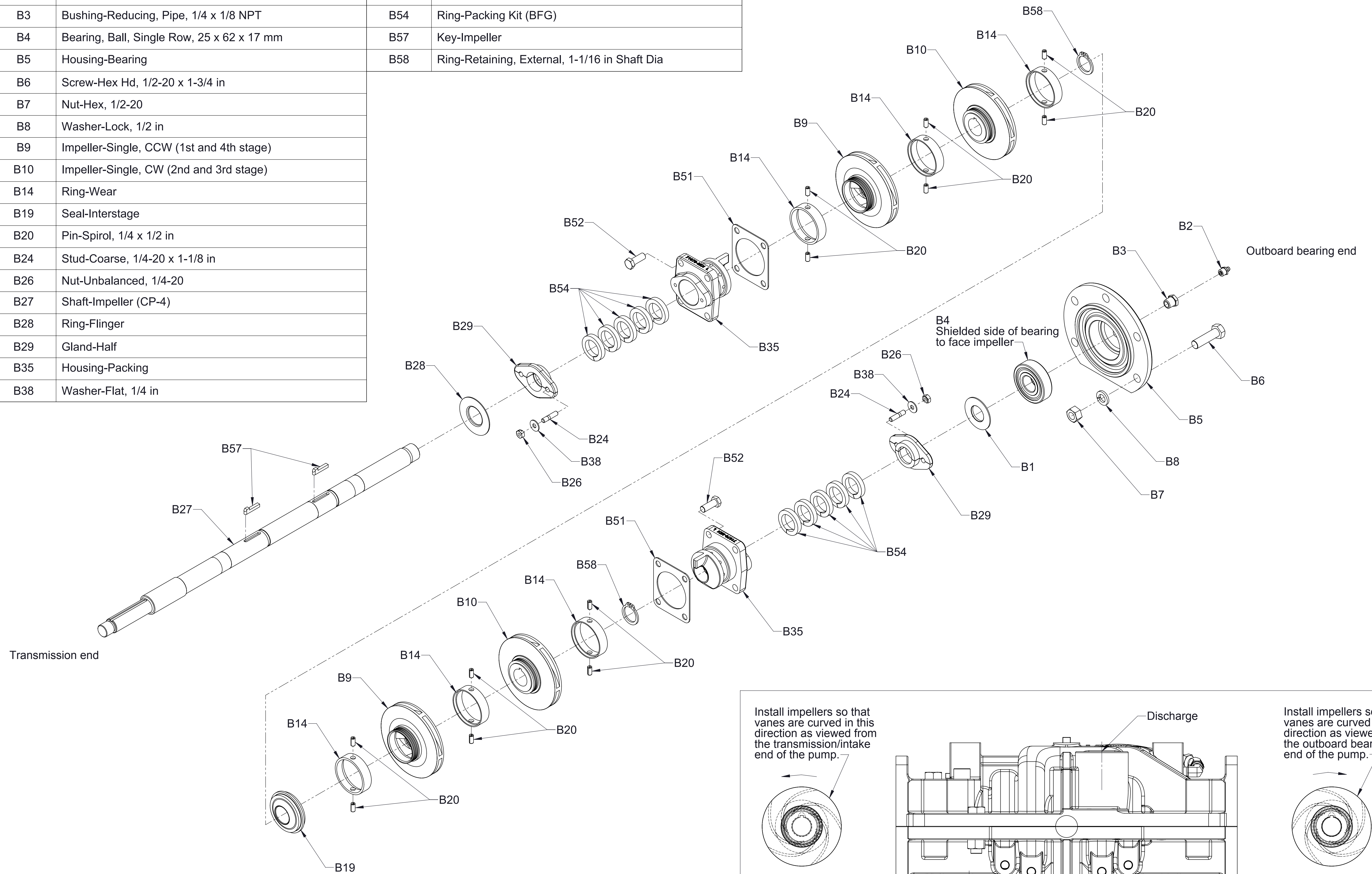


Ref No.	Description
B11	Screw-Hex Hd, 5/8-11 x 3-1/2 in, Grade 8
B13	Pin-Dowel, 3/8 x 1-1/2 in
B15	Screw-Hex Hd, 5/8-18 x 2-1/4 in, Grade 8
B16	Nut-Hex, 5/8-18
B18	Plug-Pipe, Square Hd, 3/8 NPT
B39	Plug-Pipe, Square Hd, 1/8 NPT
B40	Screw-Cap, Hex Soc Hd, 5/8-18 x 2-1/2 in
B43	Elbow-Adapter, Union, 90deg, 1/4 NPT
B44	Elbow-Street, 90°, 1/4 NPT
B45	Hose Assembly, 1/4 NPT
B46	Washer-Flat, 5/8 in
B47	Screw-Cap, Hex Soc Hd, 5/8-11 x 3-1/2 in
B48	Screw-Hex Hd, 5/8-11 x 4 in, Grade 8
B49	Body Subassembly (Includes upper and lower body halves and B13 dowel pins)
B53	Gasket Set, Body, Ultra High Pressure
B55	Adapter-Swivel, 45°, 1/4 NPTF x 1/4 NPSMF

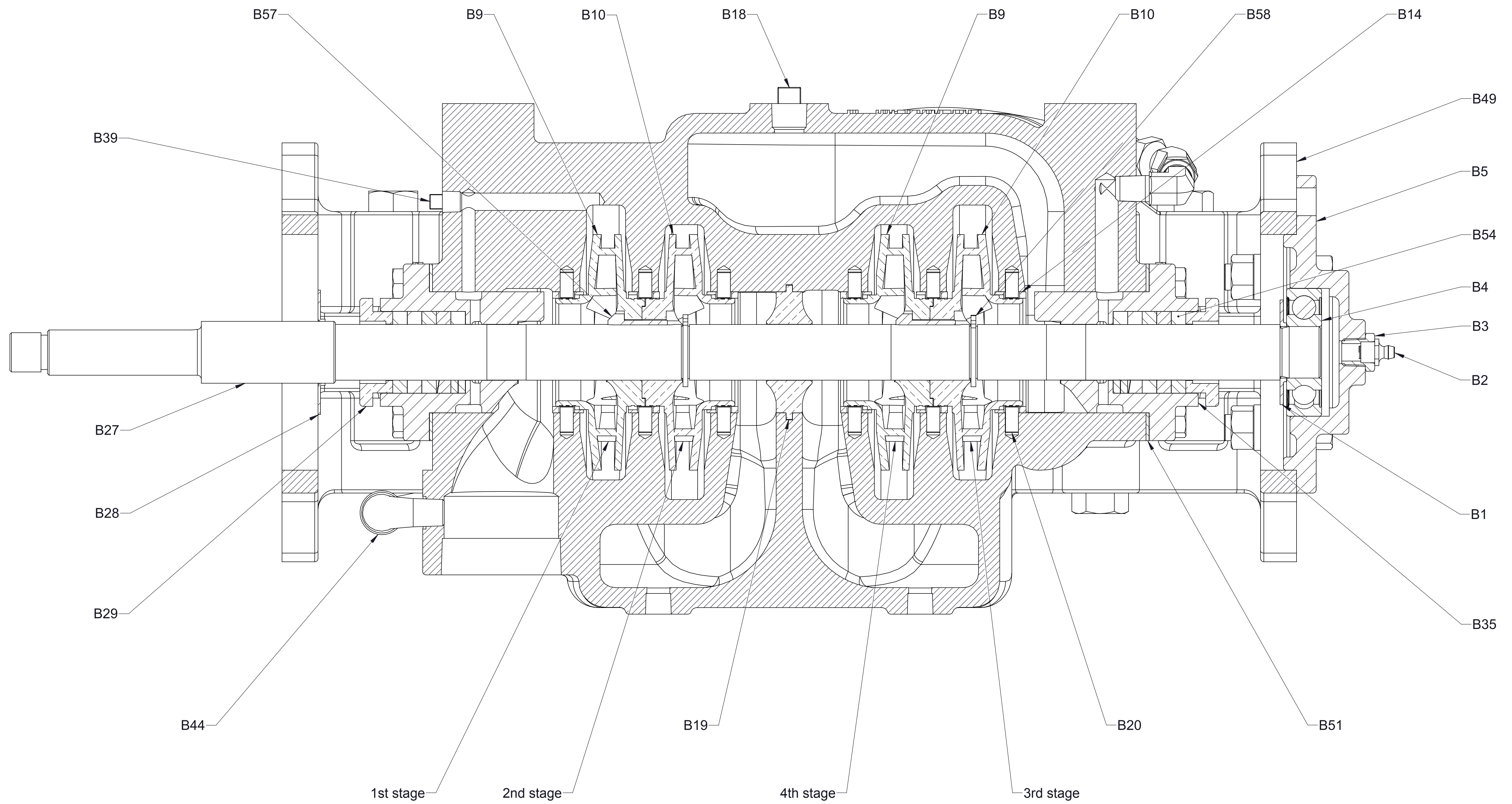


Body Components

Ref No.	Description	Ref No.	Description
B1	Ring-Flinger	B51	Gasket-Housing, Packing
B2	Fitting-Lubrication	B52	Screw-Hex Hd, 3/8-16 x 1 in
B3	Bushing-Reducing, Pipe, 1/4 x 1/8 NPT	B54	Ring-Packing Kit (BFG)
B4	Bearing, Ball, Single Row, 25 x 62 x 17 mm	B57	Key-Impeller
B5	Housing-Bearing	B58	Ring-Retaining, External, 1-1/16 in Shaft Dia
B6	Screw-Hex Hd, 1/2-20 x 1-3/4 in		
B7	Nut-Hex, 1/2-20		
B8	Washer-Lock, 1/2 in		
B9	Impeller-Single, CCW (1st and 4th stage)		
B10	Impeller-Single, CW (2nd and 3rd stage)		
B14	Ring-Wear		
B19	Seal-Interstage		
B20	Pin-Spirol, 1/4 x 1/2 in		
B24	Stud-Coarse, 1/4-20 x 1-1/8 in		
B26	Nut-Unbalanced, 1/4-20		
B27	Shaft-Impeller (CP-4)		
B28	Ring-Flinger		
B29	Gland-Half		
B35	Housing-Packing		
B38	Washer-Flat, 1/4 in		



Impeller Shaft Components



Cross-Section View
 (See Bill of Materials on page 2 and 3)