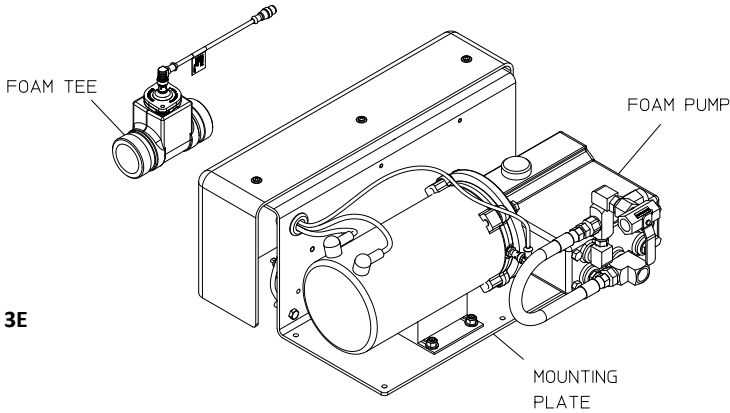


Advantus™ Foam System Service Parts List

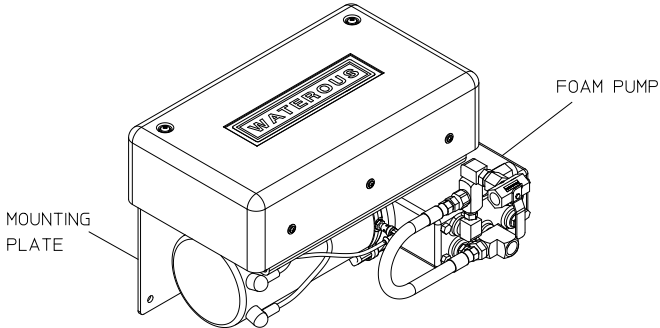
Models: Advantus 3E, Advantus 3E SSP

Index:

Component		See Pages
Foam Pump	Complete Unit	2, 3
	Pump and Motor	4, 5
	Bracket and Control Module	6, 7
	Control Box Wiring	8, 9
Foam Tee Components and Cable		10, 11
Panel Components		12, 13
Foam Tank		14, 15
Master Waterway Check Valve		See Service Parts List SPL83380
Foam Supply and Inject/By-Pass Hose Kits		See Service Parts List SPL83430
Dual Foam Tank Selector Kit		See Service Parts List SPL83440
Dual OIT Kit		See Service Parts List SPL83459



Model Advantus 3E

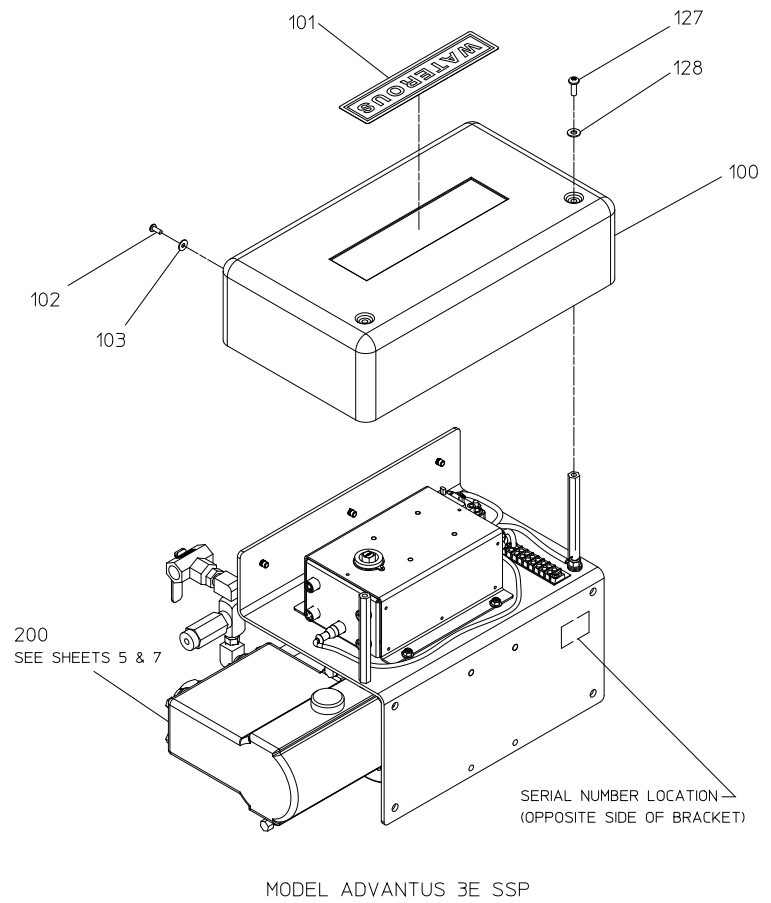
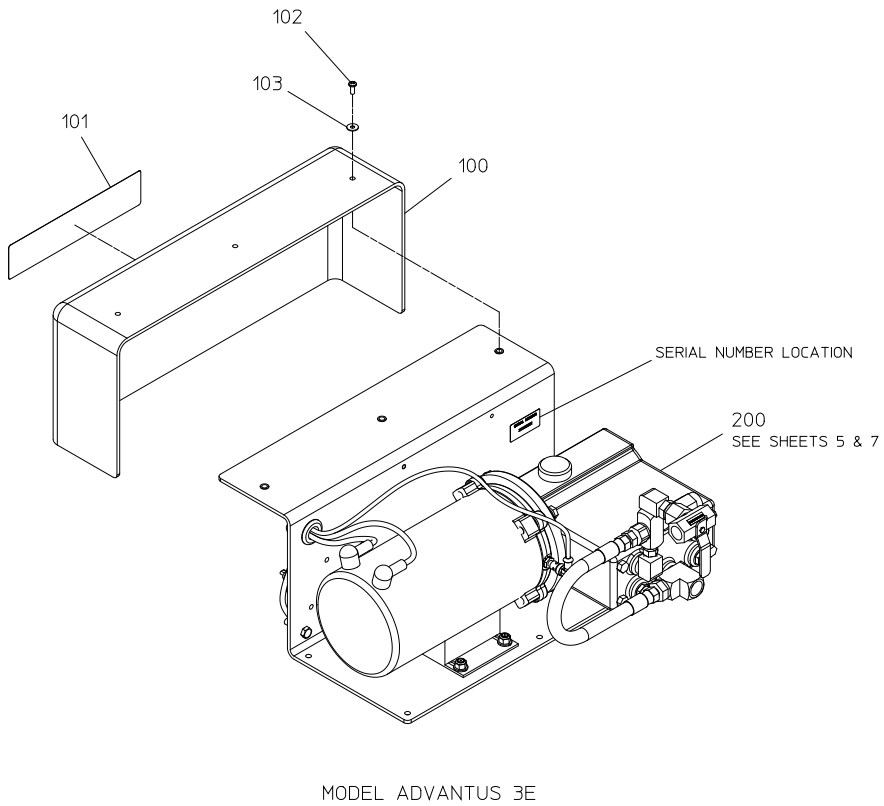


Model Advantus 3E SSP

Foam Pump – Complete Unit

REF NO.	DESCRIPTION
100	Foam Pump Cover
101	Cover Label
102	Pan Head Screw, No. 10-32 x 1/2 in.
103	Plain Washer, No. 10

REF NO.	DESCRIPTION
127	Pan Hd Screw, ¼-20 x ¾ in.
128	Plain Washer, ¼ in.
200	Foam Pump Ass'y (Includes 201 thru 277)

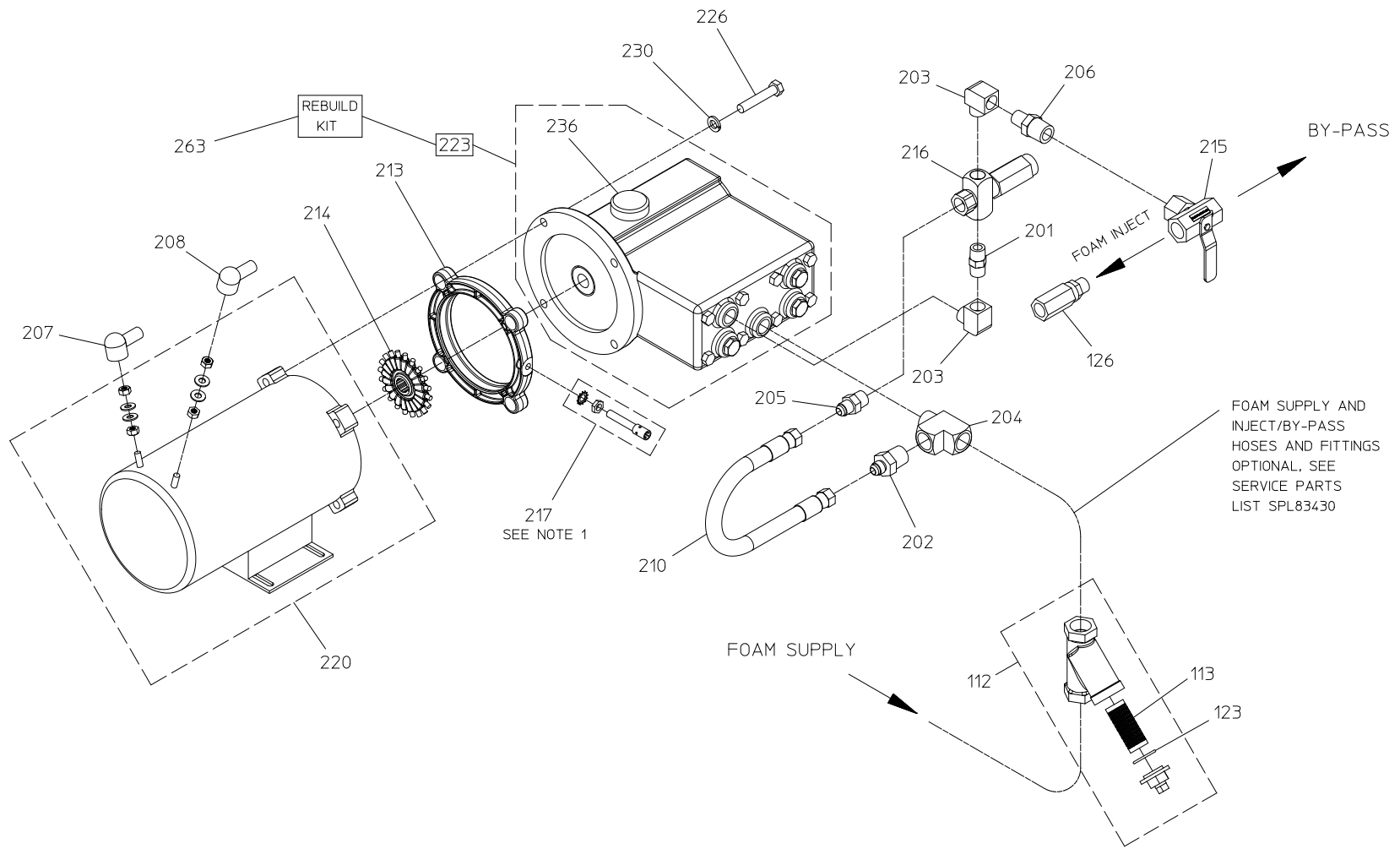


FOAM PUMP – COMPLETE UNIT

Foam Pump – Pump and Motor

REF NO.	DESCRIPTION
112	Wye Strainer, 3/4 in. (Includes 113 and 123)
113	Strainer Screen
123	Strainer Gasket
126	Check Valve, 3/8 in.
201	Straight Adapter, 3/8 MNPT x 3/8 MNPT
202	Straight Adapter, 6 MJIC x 1/2 MNPT
203	Street Elbow, 90 Deg., 3/8 NPT
204	Tee, 1/2 MNPT x 1/2 FNPT x 1/2 MNPT
205	Straight Adapter, 6 MJIC x 3/8 MNPT
206	Straight Adapter, 3/8 MNPT x 1/2 MNPT
207	Black Boot
208	Red Boot

REF NO.	DESCRIPTION
210	Bypass Hose
213	Pump Spacer
214	Sensor Wheel
215	3 Way Ball Valve
216	Pressure Regulator
217	Product Sensor
220	Electric Motor
223	Foam Pump (Includes 236)
226	Hex Hd Screw, 3/8-16 x 2 in.
230	Lock Washer, 3/8 in.
236	Vented Oil Fill Cap
263	Foam Pump Rebuild Kit



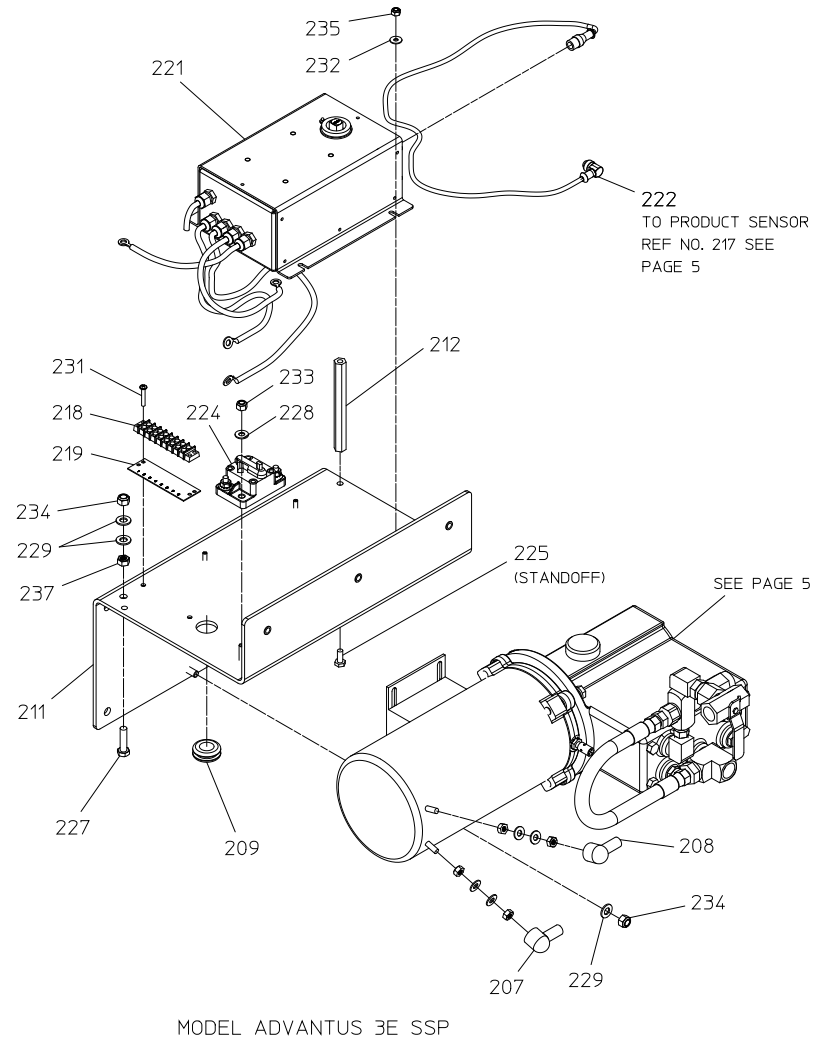
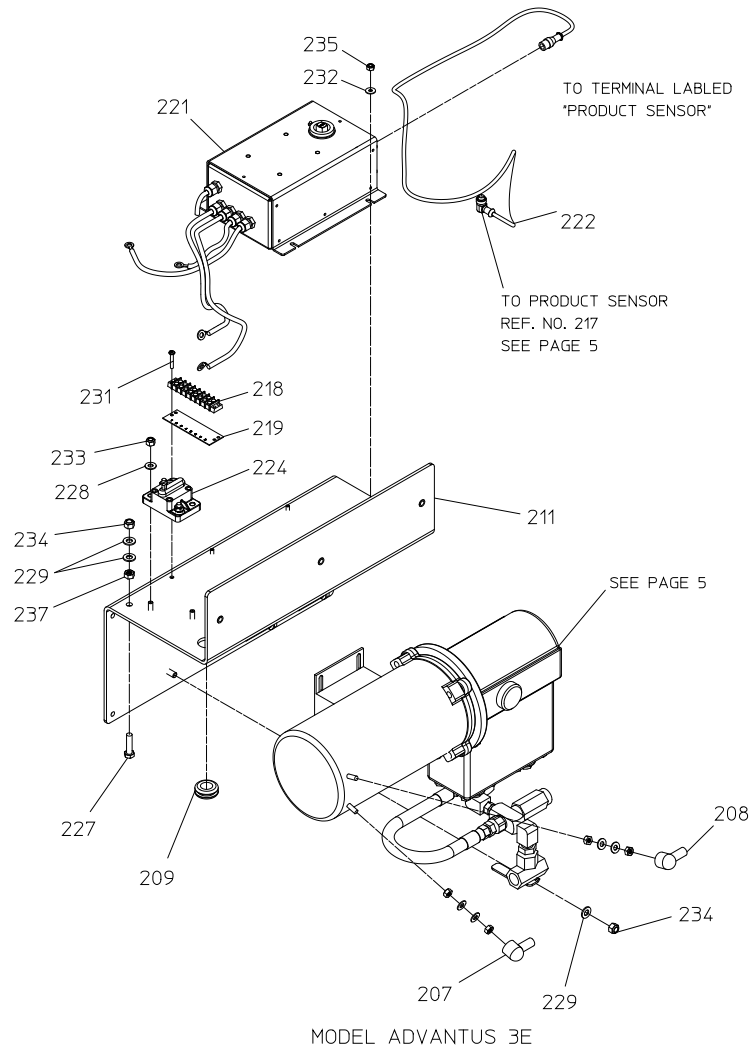
NOTE:
 1. THREAD INTO PUMP SPACER
 UNTIL CONTACT IS MADE WITH SENSOR
 WHEEL. BACK OUT 1-1/4 TURNS AND
 TIGHTEN LOCKNUT. (.050in. GAP REQUIRED)

FOAM PUMP – PUMP AND MOTOR

Foam Pump – Bracket and Control Module

REF NO.	DESCRIPTION
207	Black Boot
208	Red Boot
209	Grommet
211	Z Bracket
212	Standoff, ¼-20 x 5 in.
218	8 Position Terminal Block
219	Number Strip
221	Control Box
222	Product Sensor Cable
224	Circuit Breaker

REF NO.	DESCRIPTION
225	Hex Head Screw, ¼-20 x 5/8 in.
227	Hex Head Screw, 5/16-18 x 1-1/4 in.
228	Plain Washer, ¼ in.
229	Plain Washer, 5/16 in.
231	Screw-Pan Head, No. 8-32 x ¾ in.
232	Plain Washer, No. 10
233	Nylok Hex Nut, ¼-20
234	Nylok Hex Nut, 5/16-18
235	Nylok Hex Nut, No. 10-32
237	Hex Nut, 5/16-18

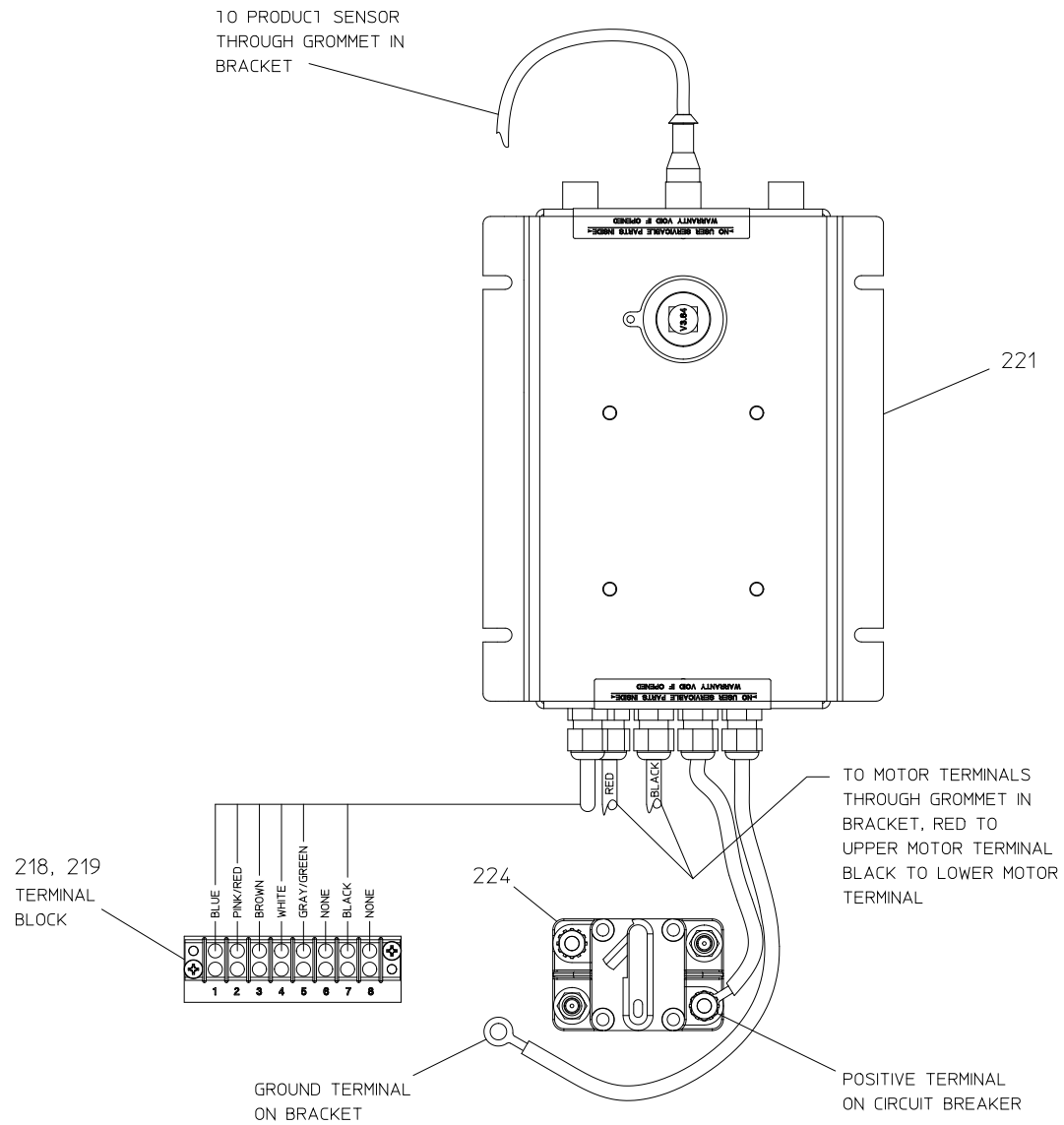


FOAM PUMP – BRACKET & CONTROL MODULE

Foam Pump – Control Box Wiring

REF NO.	DESCRIPTION
218	8 Position Terminal Block
219	Number Strip

REF NO.	DESCRIPTION
221	Control Box
224	Circuit Breaker

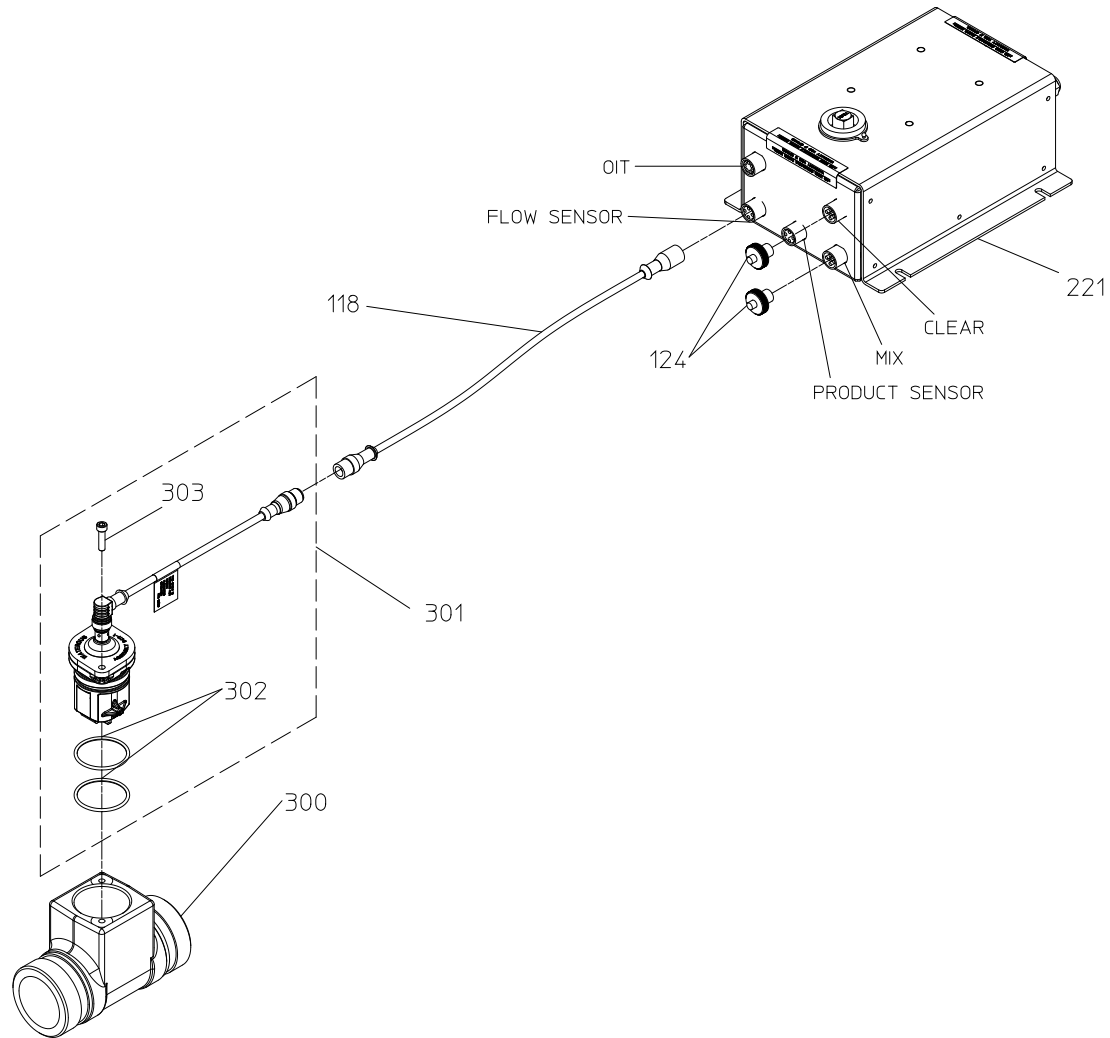


FOAM PUMP – CONTROL BOX WIRING

Foam Tee – Components and Cable

REF NO.	DESCRIPTION
118	Flowmeter Cable, 3 Meter
124	Port Plug
221	Control Box
300	FNPT Tee x Victaulic

REF NO.	DESCRIPTION
301	Flowmeter (Includes 302 and 303)
302	O-ring, 1-1/2 x 1-11/16 in.
303	Socket Hd Screw, No. 10-32 x ¼ in.

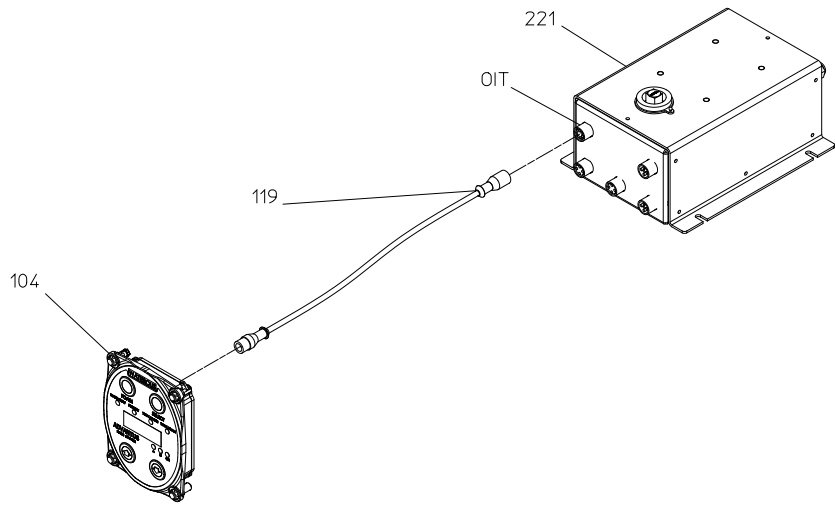


FOAM TEE – COMPONENTS AND CABLE

Panel Components

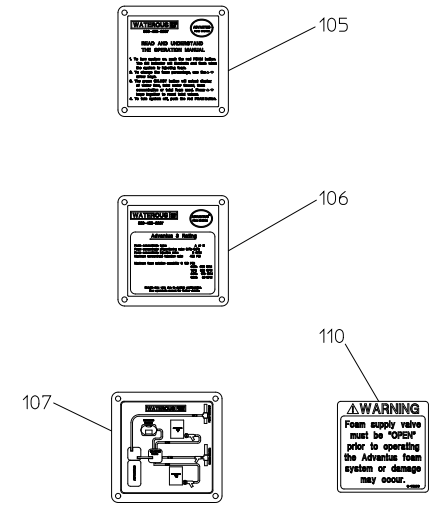
REF NO.	DESCRIPTION
104	Advantus OIT
105	Instruction Plate
106	Rating Plate
107	Schematic Plate

REF NO.	DESCRIPTION
110	Warning Label
119	6 Meter Length OIT Cable
221	Control Box



OIT

NOTE: FOR OPTIONAL DUAL OIT, SEE SERVICE PARTS LIST SPL83459



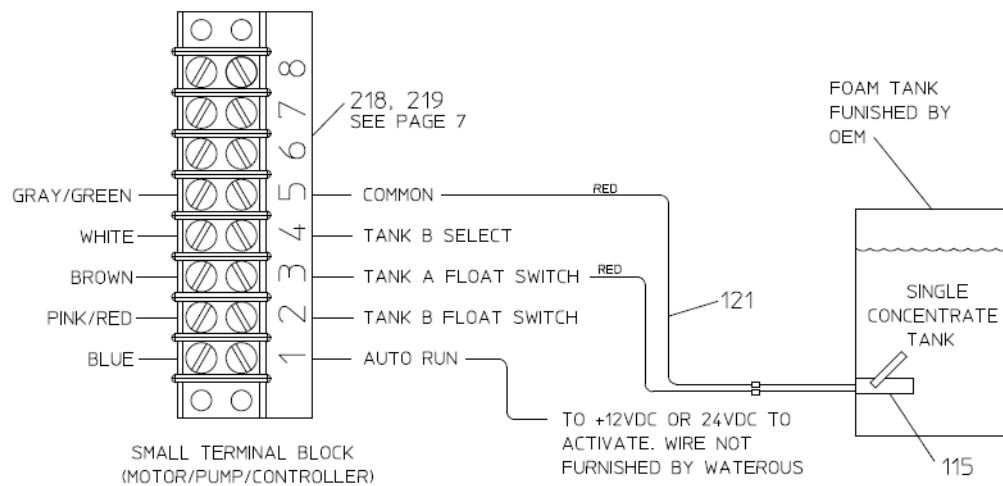
PANEL PLATES

PANEL COMPONENTS

Foam Tank

REF NO.	DESCRIPTION
114	Dual Tank Selector Controller
115	Tank Level Switch
121	4 Meter Length Tank Level Switch Cable

REF NO.	DESCRIPTION
218	8 Position Terminal Block
219	Number Strip



NOTE: FOR OPTIONAL DUAL TANK SELECTOR, SEE SERVICE PARTS LIST SPL83440

FOAM TANK