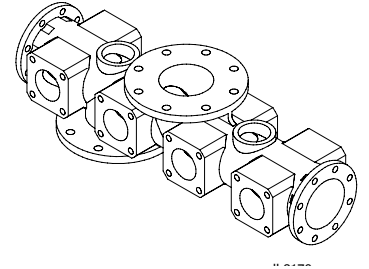




**THEN, NOW, ALWAYS. MOVING FORWARD.**

**SPECIFICATIONS – ACCESSORIES: 21<sup>ST</sup> CENTURY MANIFOLD**  
**Versatility is the key to the 21st Century Discharge Manifold.**

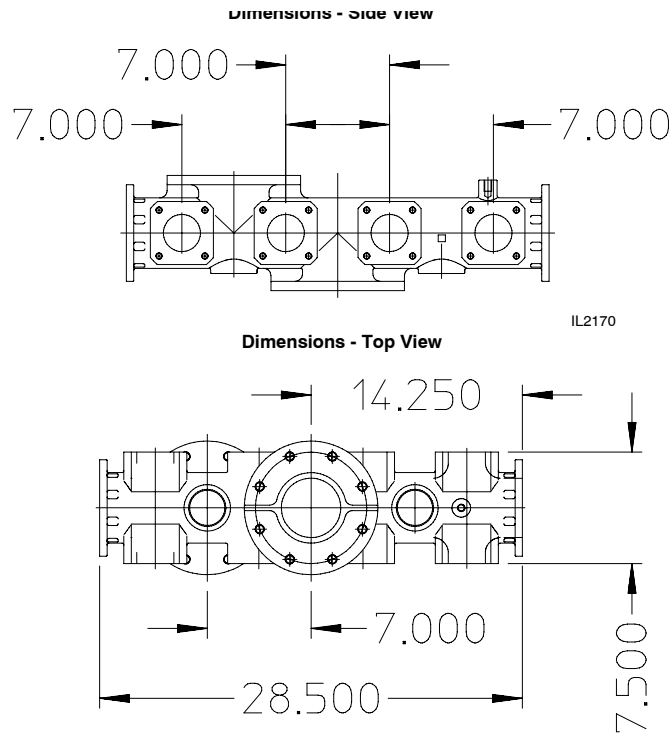
Designed to be installed on the center discharge port of a CS/CM series pump or on the S100C10 and CX series pump discharge flange, it can be orientated for top or side-mount control panels. Flange arrangements and spacing allows for organized horizontal layout plumbing of all discharges and eases the layout of the panel by the apparatus builder to comply with NFPA 1901 14-12.3. Hydro-dynamically designed passageways allow for delivery of the rated capacity of the pump up to 2250 GPM.



**Features and Benefits:**

- Sold, serviced and warranted through Waterous
- Ductile iron construction increased strength and durability while reducing weight.
- Multiple 2-1/2" four-bolt flanges allow for plumbing flexibility by the apparatus builder.
- 4" ANSI flange discharge for large flow monitor applications.
- (2) 4" eight-bolt discharges allow for additional large diameter plumbing.
- (2) 2" NPT taps can be used to tank fill or crosslay applications.
- Mounting bosses and brackets allow for proper support.
- 4° angle compensated and non-angle compensated adapters available to match pump mounting angle.

**Dimensions:**



**Industry-Leading Sales and Support**

When you purchase Waterous equipment, not only do you get quality products, you get quality service. Our expert service technicians are the best in the business and they are always happy to answer any service questions you might have.

**Sales/Applications Assistance**  
Phone: 651-450-5234 (Press 3)  
pumpsales@waterousco.com

**Service Assistance**  
Phone: 651-450-5200  
Fax: 800-488-1228  
service@waterousco.com