



THEN, NOW, ALWAYS. MOVING FORWARD.

SPECIFICATIONS – FOAM SYSTEMS: FOAMFILL

The Waterous FoamFill Foam Tank Refill System, operating independently from the foam injection system, allows refilling of the foam tanks while the foam system is in operation. Consisting of a 12 or 24-volt electric motor driven concentrate pump that delivers a minimum flow of 10 GPM (37.8 L/min), the FoamFill Foam Tank Refill System can handle Class A or Class B foam concentrates, emulsifiers, gels and decontamination concentrates.



Components:

Control Unit with Operator Panel

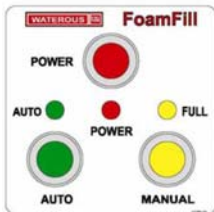
A microprocessor that receives input from the tank level sensors and controls the foam concentrate pump output is housed within the control unit. When the green "AUTO" push button on the Operator Panel is selected, the microprocessor begins to receive readings from the tank sensors. When the tank is filling, a yellow LED on the panel will flash. When the tank is full, a signal is sent to the foam concentrate pump to stop, preventing the tank from being overfilled. A steady yellow LED on the panel will indicate that the tank is full.

A timer programmed into the microprocessor shuts down the pump motor after six minutes of non-stop operation.

The operator panel includes color coded stainless steel push button switches, LED indicator lights and a polycarbonate overlay.

Operational functions and LED indicator lights:

- Red "POWER" push button ON/OFF switch
- Red "POWER" system operational LED
- Green "AUTO" push button Auto Mode switch
- Green "AUTO" Auto Mode LED
- Yellow "MANUAL" push button override of Full Tank switch
- Steady yellow "FULL" LED indicates full tank
- Flashing yellow "FULL" LED indicates tank filling



Panel-Mounted Fill Connection

Non-drip, hydraulic quick-connect type constructed of brass or optional stainless steel with a spring-loaded release collar.

- Class A - 3/4" ID connection and piping
- Class B - 1" ID connection and piping

Check Valves

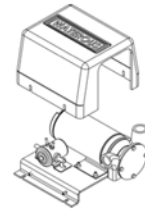
Included in the internal plumbing to prevent backflow.

Three-way Fill/Flush Valve

A bronze three-way valve is provided to allow the operator to easily flush the system after each use.

Concentrate Pump with Electric Motor

The FoamFill system includes a 12 or 24-volt electric motor driven, self-priming concentrate pump, delivering a minimum flow of 10 GPM (37.8 l/min) with all concentrates currently utilized in fire apparatus. Pump body is constructed of bronze. Other components that come in contact with chemicals are constructed of non-corrosive materials.



Solenoid

An 85-amp continuous-duty solenoid, mounted to the base of the pump, receives signals from the microprocessor and powers the electric motor directly coupled to the concentrate pump.

Stainless Steel Pick-Up Wand and Hose

A stainless steel pick-up wand and 6 feet of reinforced hose with 3/4" ID is standard for Class A foam. For Class B foam, 1" ID hose is standard. An optional pick-up wand is available for 55-gallon drums.

Tank Level Sensors

Two tank level sensors provide information to the microprocessor to control the concentrate pump output.

Miscellaneous Components:

- Strainer
- Operational instruction placards

Miscellaneous Components:

- Strainer
- Operational instruction placards



Warranty:

Two-year limited warranty

Industry-Leading Sales and Support

When you purchase Waterous equipment, not only do you get quality products, you get quality service. Our expert service technicians are the best in the business and they are always happy to answer any service questions you might have.

Sales/Applications Assistance
Phone: 651-450-5234 (Press 3)
pumpsales@waterousco.com

Service Assistance
Phone: 651-450-5200
Fax: 800-488-1228
service@waterousco.com