



FOAM SYSTEMS

CAFSystems™

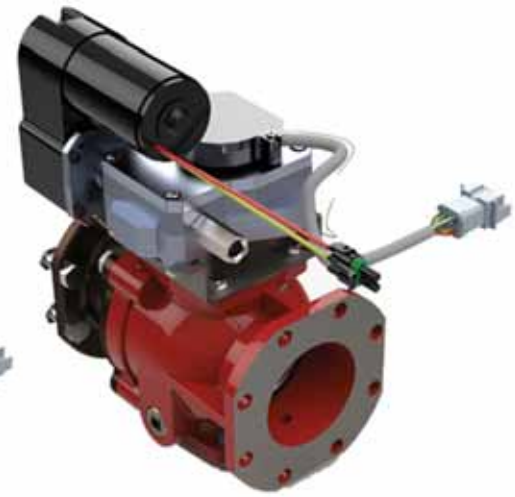
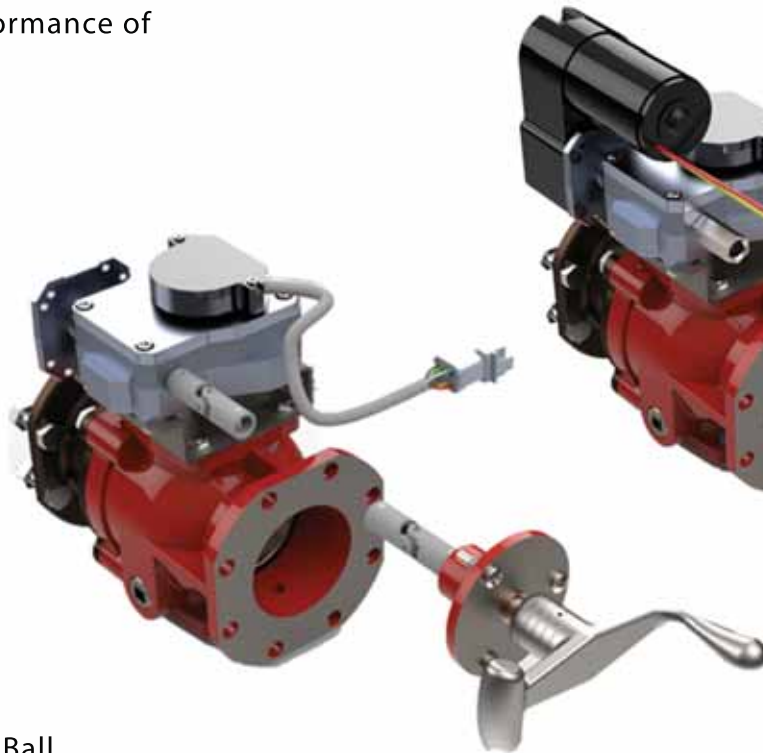
FIRE PUMPS

ACCESSORIES

DISCHARGE VALVES

REPAIR LESS OFTEN WITH WATEROUS VALVES

The effectiveness of a ball-type discharge valve depends greatly upon the tightness of its seal, as a leaking seal allows air to enter the pump during priming, or water to escape when operating. Sand or other abrasive material in the water being pumped can score and roughen the surfaces of the valve parts. The makeup of the ball and seal have the greatest effect on the life and performance of the discharge valve.



The Waterous Difference

- Chromium-plated Bronze Valve Ball
- Floating Seal Assembly with Wave Spring
- Urethane Seal provides a POSITIVE SEAL on the ball
- Seals on the intake side only providing EXTRA life of the ball
- Design allows the trunions to remain centered in valve body not affected by pressure or volume.
- Multi-Purpose Drainport

SPECIFICATIONS – ACCESSORIES: DISCHARGE VALVES

Open and Close Easily at any Pressure

Rugged Ball Valve

The chromium-plated bronze valve ball and bronze and stainless steel internal moving parts assure you of many years of dependable service. Ball bearings on the valve trunnions permit opening or closing the 3-1/2 inch valve easily, even under pressure. The 2-1/2 inch valves have upper and lower bronze bushings which support valve trunnions.

Multi-Port Drain Port

The Waterous valve design permits a single drain valve to drain both the valve body and discharge hose. This eliminates the expense of a separate valve drain and the nuisance of operating an extra control.

Adjustment-Free Seals

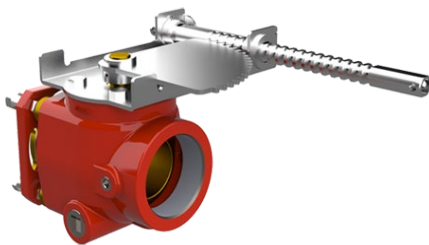
The hydraulically-balanced floating seal assembly is self-adjusting for wear, prevents leakage even under high pressure, and assures easy operation. Easily replaceable O-rings are used throughout. You never need to add or remove shims or make adjustments to correct for wear.

Discharge Extensions Available

The 2-1/2 inch discharge valves are available with a standard 2-1/2 inch threaded extension. The 3-1/2 inch discharge valves are available with a variety of extensions terminating at the panel with 3-1/2, 4, 4-1/2 or 5-inch outlets.

Reliable Operating Mechanisms

These valves are designed to open and close easily at any pressure, with any one of a variety of reliable operating mechanisms offered by Waterous. Mechanisms include provisions for valves mounted at the operator's panel, remote panel mounting, top control arrangements, and for front mounted pumps.



Push-Pull, Twist Lock Operation (2-1/2" STD & FF Only)

The rack and sector operating mechanism provides constant operating force at any valve position. A simple twist of the panel mounted "T" handle locks the valve in any position regardless of discharge pressure.



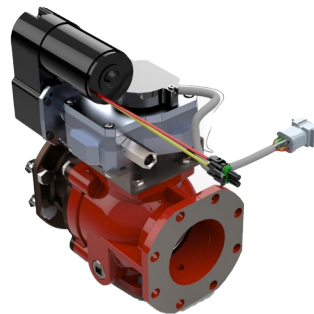
Manual Rotary (All Valves)

Complies with NFPA requirement of slow actuation. The hand crank worm gear actuator allows easy operation of any size valve. Bright LED's give accurate valve position.



Quarter-Turn, Remote Locking (2-1/2" STD & FF Only)

This control offers the same basic features as the other types except that a locking system is not included as part of the operating mechanism. Often used with top mounted panels.



Electric Rotary Actuator (All Valves)

Complies with NFPA requirements for slow operation. The electric actuator is designed for easy positioning of valves with a panel mounted switch. The compact control panel has bright LED's for accurate, easy to read valve position.

Optional Fittings

- Threaded Nipples
- Chrome-Threaded Adapters
- Tapped Flanges



Threaded Extensions

Straight discharge extension with 3-1/2 or 4-inch hose thread connection



WYES

Two 3-1/2 inch discharge valves mounted on a vertical line with a Siamese discharge extension with 4-1/2 or 5-inch hose thread in cast iron only.



H Manifold – Flexible discharge fitting arrangements



Control Panels



Electric Valve Position Control



Manual Valve Position Control