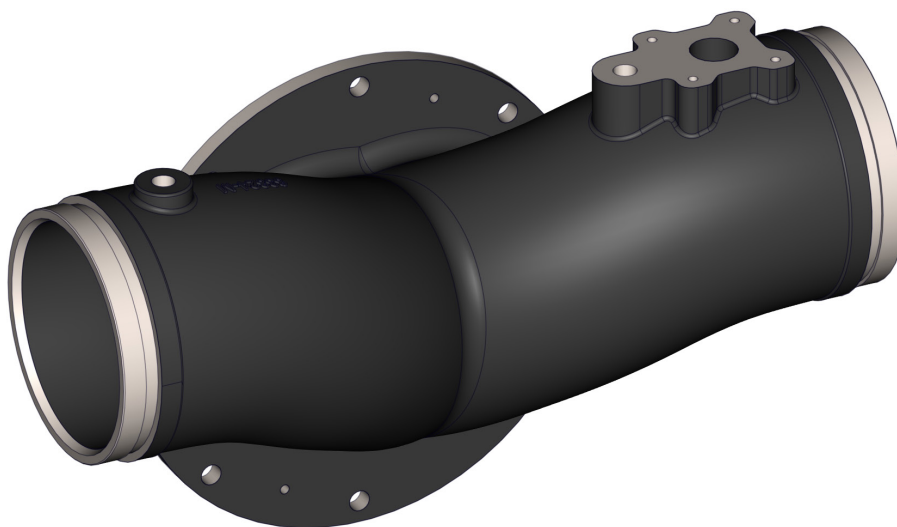


## Technical Bulletin No. 138

## New 6-Inch Intake for CXS Pumps

### New Design

Introducing the newly revised 6-inch intake for CXS pumps. The simplified design keeps the popular features and general profile of its predecessor. However, the seldom-used 5-inch intake has been removed, reducing the weight by 8 lb (3.6 kg).



### Previous Design

The previous design is discontinued—orders received after August 31, 2020 will be fulfilled with the new design.

